
Working Families' Tax Credit Statistics

Quarterly Enquiry

United Kingdom August 2001

Contact point for enquiries and requests for further copies:-

Analysis and Research (TCASP)
Inland Revenue
Room 39a - New Wing
Somerset House
London
WC2R 1LB
☎ : 020 - 7438 6275
Fax : 020 - 7438 4329
E-mail : ar_tcasp.ir.sh@gtnet.gov.uk

This, and issues back to November 1999, can be found on the Inland Revenue web site : www.inlandrevenue.gov.uk under "Statistics"

The November 2001 issue is due to be published on the web site on Tuesday 9th April 2002.

A NATIONAL STATISTICS PUBLICATION

National Statistics are produced to a high professional standards set out in the National Statistics Code of Practice. They undergo regular quality assurance reviews to ensure that they meet customer needs. They are produced free from any political interference.

For general enquiries about National Statistics, contact the National Statistics Public Enquiry Service on

☎ : 020 - 7533 5888
minicom : 01633 812399
E-mail : info@statistics.gov.uk
Fax : 01633 652747
Letters : room DG/18, 1 Drummond Gate, LONDON, SW1V 2QQ

You can also find National Statistics on the internet - go to www.statistics.gov.uk

Working Families' Tax Credit Statistics

Quarterly Enquiry

United Kingdom

August 2001

Contents	PAGE
Introduction	1
Main findings	2
List of tables	3
Section 1 : Time series	5
Section 2 : Family type	11
Section 3 : Amount of award	13
Section 4 : Family size	15
Section 5 : Occupations	17
Section 6 : Earnings and hours	23
Section 7 : Income and savings	25
Section 8 : Childcare	27
Section 9 : Duration on award	29
Appendix A : Sampling error	31
Appendix B : Occupation codes	33

Introduction

Working Families' Tax Credit (WFTC) is a tax credit available to families with at least one adult in remunerative work for at least 16 hours per week, and who are responsible for at least one child under 16 (under 19 if in full-time education up to A-level or equivalent standard). It is payable to two-parent and one-parent families.

Awards of WFTC cover 26 weeks. These tables cover families in receipt of WFTC at 31 August 2001 (that is, having awards with start and end dates spanning 31 August).

WFTC replaced Family Credit (FC) from 5 October 1999. Time series of the number of families receiving WFTC and FC are also shown, but for dates before November 1997 figures are available only for such cases dealt with by the Great Britain office (that is, excluding cases dealt with by the Northern Ireland office).

The main aggregates, and some detailed figures, are derived from an analysis of all awards. They are based on an extract taken about two and a half months after the reference date, and are consistent with the figures in the new publication "Working Families' and Disabled Person's Tax Credit Statistics. Geographical analyses. August 2001."

Other detailed figures are estimates based on a scan of a random 5 per cent sample of awards dealt with by the Great Britain office, and all awards dealt with by the Northern Ireland office, taken about three months after the reference date. Consistency with the main aggregates has been achieved by applying appropriate weights to awards in each of 16 strata. These strata are defined (a) by whether the recipient family has one or two adults, (b) by whether or not the main earner is self employed, (c) by whether or not the award includes a childcare tax credit and (d) by the office dealing with the case.

The source(s) used for each table are noted at the foot of the table. The figures derived from the 5 per cent sample are estimates subject to sampling error (see Appendix A), and such estimates based on fewer than 25 cases are shown as '-'.

In previous issues of this publication all the figures were based on the 5 per cent sample. In the time series tables in Section 1, the figures for May 2001 are shown on both bases.

Previous issues of this publication showed the number of recipients in each region, local authority and parliamentary constituency. These figures are now included instead in the Geographical analyses publication.

Main findings

There were 1,269 thousand families receiving WFTC awards at 31 August 2001, 1.5 per cent higher than at 31 May 2001.

The average award was £82.21 per week.

Nearly half of lone parent recipients had administrative, secretarial or personal service occupations. For couples, over half the main earners had skilled trades, were process, plant or machine operatives or had elementary occupations.

A total of 2.50 million children were in recipient families. 653 thousand (51 per cent) of the recipient families were headed by lone parents; these families included 1.08 million children - an average of 1.7 per lone parent family. The other 616 thousand families were headed by couples; they included 1.42 million children - an average of 2.3 per family headed by couples.

758 thousand (60 per cent) of the recipient families benefited from the 30-hour credit.

For 154 thousand recipient families (12 per cent), their award included a childcare tax credit. The average value of this credit for those benefiting was £37.30 per week.

The average gross weekly earnings of the main earner in the recipient families was £171.

List of tables

Section 1 : Time series

Table 1.1	FC/WFTC recipients by family type, May 1988 - August 2001.
Chart 1	FC/WFTC recipients by family type, GB office, May 1988 - August 2001.
Table 1.2	Average FC/WFTC award by family type, May 1988 - August 2001.
Chart 2	Average FC/WFTC award by family type, GB office, May 1988 - August 2001.
Table 1.3	FC/WFTC awards including help with childcare charges, November 1994 - August 2001.
Table 1.4	FC/WFTC recipients by employment status of the main earner, August 1999 - August 2001.

Section 2 : Family type

Table 2.1	Recipient families by family type.
Chart 3	Distribution of recipient families by type.
Table 2.2	Recipient families by family type and age of the main earner.
Chart 4	Distribution of recipient families by age of the main earner.

Section 3 : Amount of award

Table 3.1	Family type of recipients, by weekly amount of award.
Table 3.2	Average weekly award by family type.
Table 3.3	Recipients of awards not subject to income taper by family type and employment status of the main earner.

Section 4 : Family size

Table 4.1	Children in recipient families, by family type and employment status of the main earner.
Table 4.2	Average number of children in recipient families, by family type and employment status of the main earner.
Table 4.3	Children in recipient families, by family type, family size and age.
Table 4.4	Recipient families, by type, size and weekly amount of award.

Section 5 : Occupations

- Table 5.1 Recipient families by broad occupation group of the main earner.
- Table 5.2 Recipient families by family type and occupation of the main earner.
- Table 5.3 Average award by family type and occupation of the main earner.
- Table 5.4 Recipient families by employment status and occupation of the main earner.
- Table 5.5 Average award by employment status and occupation of the main earner.

Section 6 : Earnings and hours

- Table 6.1 Recipient families by family type, and by employment status and gross weekly earnings of the main earner.
- Table 6.2 Recipient families by family type, and by employment status and hours worked by the main earner.
- Table 6.3 Awards with the 30-hour credit, by family type and employment status of the main earner.

Section 7 : Income and savings

- Table 7.1 Recipient couples by whether the partner of the main earner is working.
- Table 7.2 Recipient families whose incomes include social security benefits which are brought to account, by family type.
- Table 7.3 Recipient families whose incomes include other income which is brought to account, by family type.
- Table 7.4 Recipient families with savings over £3,000, by family type.

Section 8 : Childcare

- Table 8.1 Recipient families with childcare tax credit, by family type.
- Table 8.2 Recipient families with a disallowed claim for childcare tax credit.
- Table 8.3 Recipient families with childcare tax credit, by amount paid for childcare and family type.
- Table 8.4 Recipient families with childcare tax credit, by type of childcare used and family type.

Section 9 : Duration on award

- Table 9.1 Recipient families by continuous duration on award.

Section 1 : Time series

This section shows back quarterly series for the number of recipients of Family Credit and Working Families' Tax Credit, and their average weekly awards.

For November 1999 and February 2000 the recipient families are a mixture of Family Credit and Working Families' Tax Credit recipients. Family Credit recipients are those with awards starting up to 30 September 1999 and still current at the reference date.

From May 2001, figures for this Section are now available based on analyses of all cases on the database. Before that date they are only available based on a 5 per cent sample of cases in Great Britain, and all cases in Northern Ireland. To provide consistent estimates of growth from quarter to quarter, the figures for May 2001 are shown on both bases in this section. The differences between the two sets of figures are due to sampling error in the sample estimates (see Appendix A).

The sample figures for May 2001 are slightly different to those published last time, as they take account of later information (including on awards made after the scan for the previous publication and then backdated).

Table 1.1 : FC/WFTC recipients by family type, May 1988 - August 2001.

United Kingdom; thousands

	<u>All cases</u>		<u>Couples</u>		<u>Lone parents</u>	
	<u>GB office¹</u>	<u>Total</u>	<u>GB office¹</u>	<u>Total</u>	<u>GB office¹</u>	<u>Total</u>
Based on 5 per cent sample for Great Britain²						
May-88	261.0	-	187.4	-	73.6	-
May-89	303.0	-	188.6	-	114.4	-
May-90	315.2	-	193.3	-	121.9	-
May-91	346.6	-	214.9	-	131.7	-
May-92	396.7	-	236.9	-	159.8	-
May-93	488.3	-	280.7	-	207.5	-
May-94	550.9	-	315.0	-	235.9	-
May-95	607.6	-	339.5	-	268.1	-
May-96	693.0	-	387.8	-	305.2	-
May-97	747.7	-	406.3	-	341.4	-
Aug-97	758.0	-	407.2	-	350.8	-
Nov-97	766.1	789.8	399.0	412.7	367.1	377.1
Feb-98	760.5	783.9	390.9	404.4	369.6	379.5
May-98	767.1	790.4	390.3	403.7	376.9	386.7
Aug-98	783.0	808.1	393.5	406.9	389.5	401.2
Nov-98	790.7	814.1	389.3	402.1	401.4	412.0
Feb-99	789.1	815.6	388.7	403.3	400.3	412.3
May-99	790.9	821.3	387.1	403.7	403.8	417.6
Aug-99	786.4	817.0	379.1	395.8	407.3	421.1
Nov-99	930.9	965.3	448.8	467.6	482.1	497.8
Feb-00	989.3	1,025.9	480.0	500.0	509.2	526.0
May-00	1,024.0	1,061.4	493.3	513.4	530.7	548.0
Aug-00	1,089.7	1,129.1	527.2	548.5	562.4	580.6
Nov-00	1,126.3	1,167.8	543.0	565.9	581.5	601.8
Feb-01	1,182.0	1,225.7	574.8	598.3	607.3	627.3
May-01	1,214.8	1,259.5	593.5	617.6	621.3	642.0
Based on all awards²						
May-01	1,206.9	1,251.4	591.3	615.2	615.5	636.1
Aug-01	1,224.8	1,269.8	592.4	616.3	632.4	653.4

¹ Cases dealt with by the Northern Ireland tax credit office are excluded from the "GB office" series.

² See introduction to this section

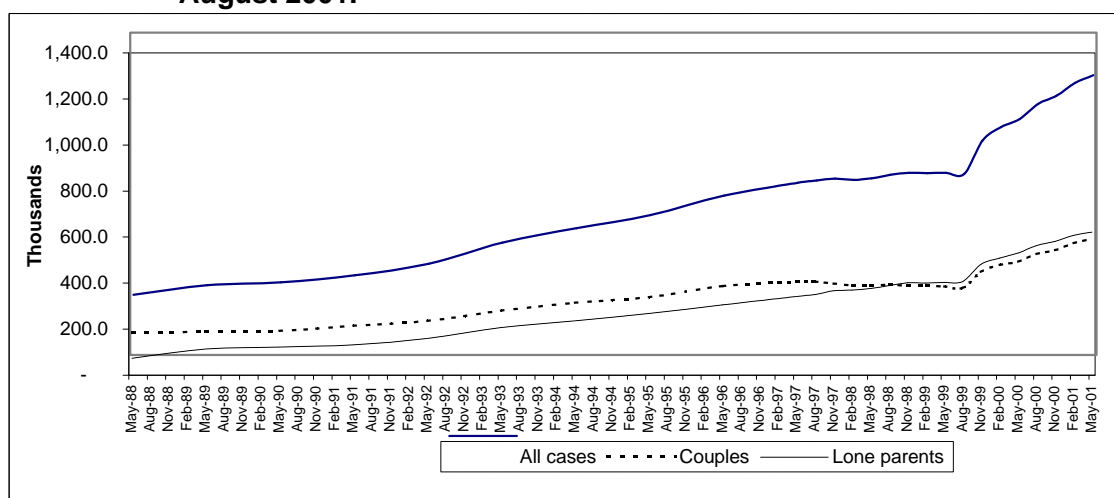
Chart 1 : FC/WFTC recipients by family type, GB office, May 1988 - August 2001.

Table 1.2 : Average FC/WFTC award by family type, May 1988 - August 2001.

United Kingdom; £ per week

	All cases		Couples		Lone parents	
	GB office ¹	Total	GB office ¹	Total	GB office ¹	Total
Based on 5 per cent sample for Great Britain²						
May-88	28.31	-	28.41	-	28.05	-
May-89	25.55	-	24.52	-	27.24	-
May-90	28.23	-	27.54	-	29.31	-
May-91	31.32	-	30.69	-	32.36	-
May-92	37.69	-	36.50	-	39.45	-
May-93	43.34	-	41.23	-	46.19	-
May-94	47.09	-	45.05	-	49.82	-
May-95	50.17	-	48.38	-	52.44	-
May-96	55.41	-	54.72	-	56.29	-
May-97	57.85	-	57.44	-	58.33	-
May-98	59.21	59.31	58.94	59.15	59.49	59.48
Aug-98	59.82	59.89	59.53	59.74	60.11	60.05
Nov-98	60.62	60.70	60.42	60.63	60.81	60.77
Feb-99	61.83	61.93	62.02	62.25	61.64	61.62
May-99	62.85	62.99	63.28	63.55	62.43	62.45
Aug-99	62.89	63.03	63.25	63.52	62.55	62.56
Nov-99	66.05	66.20	63.80	64.11	68.14	68.16
Feb-00	70.61	70.77	67.40	67.73	73.64	73.67
May-00	73.13	73.28	69.64	69.95	76.38	76.40
Aug-00	76.72	76.86	73.33	73.63	79.89	79.91
Nov-00	80.79	80.92	77.29	77.57	84.05	84.08
Feb-01	79.43	79.58	75.20	75.48	83.44	83.48
May-01	79.41	79.57	74.75	75.04	83.87	83.93
Based on all awards²						
May-01	79.54	79.69	75.10	75.39	83.79	83.85
Aug-01	82.06	82.21	77.38	77.66	86.45	86.50

¹ Cases dealt with by the Northern Ireland tax credit office are excluded from the "GB office" series.

² See introduction to this section

Chart 2 : Average FC/WFTC award by family type, GB office, May 1988 - August 2001.

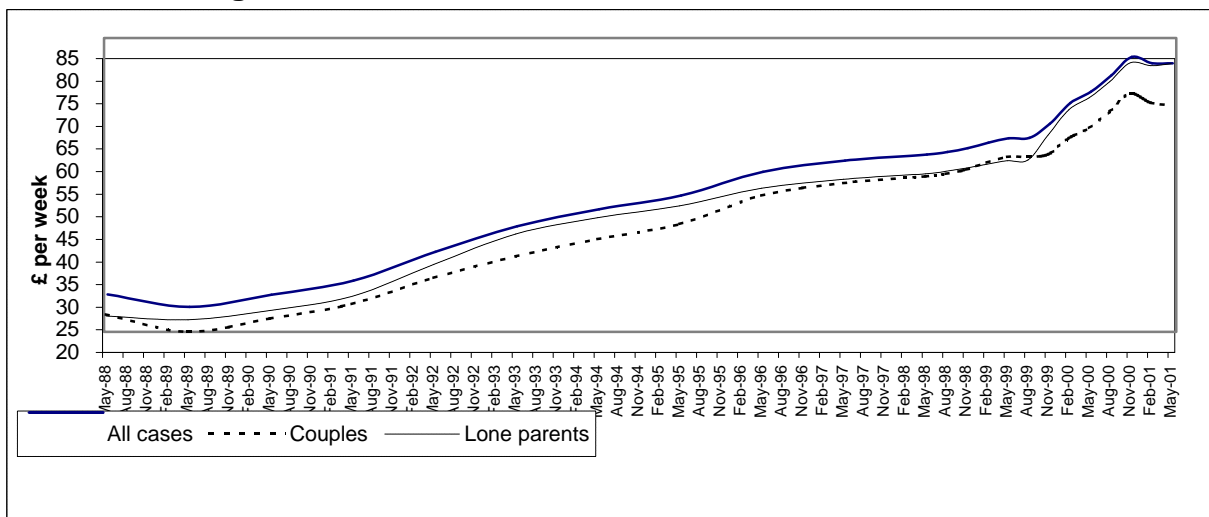


Table 1.3 : FC/WFTC awards including help with childcare charges, November 1994 - August 2001.

(FC: with extra award for childcare; WFTC: with childcare tax credit)

United Kingdom; thousands

GB office ¹	All cases	Allowed		Average extra amount included £ per week
		Lone parents	Couples	
Based on 5 per cent sample for Great Britain²				
May-95	18.4	17.5	0.8	14.78
May-96	24.7	23.6	1.1	17.33
Aug-96	27.1	25.9	1.2	18.72
Nov-96	29.5	28.3	1.2	19.52
Feb-97	29.5	28.4	1.1	19.63
May-97	30.5	29.1	1.4	19.80
Aug-97	31.9	30.5	1.4	19.80
Nov-97	32.7	31.5	1.2	20.39
Feb-98	32.2	30.9	1.3	20.62
May-98	33.5	32.2	1.4	20.00
Aug-98	37.5	36.0	1.5	20.69
Nov-98	40.2	38.8	1.4	21.87
Feb-99	40.5	39.1	1.4	22.28
May-99	43.2	41.6	1.7	21.87
Aug-99	45.4	43.9	1.4	22.08
Nov-99 FC	26.4	25.7	0.7	22.43
Nov-99 WFTC	53.2	47.6	5.6	30.89
Feb-00 FC	5.8	5.5	-	23.59
Feb-00 WFTC	90.8	81.6	9.1	31.17
May-00	107.9	98.0	9.8	32.15
Aug-00	121.0	109.8	11.2	33.38
Nov-00	126.8	114.0	12.8	35.15
Feb-01	133.3	119.6	13.7	35.35
May-01	141.0	126.5	14.5	35.71
Based on all awards²				
May-01	142.0	127.0	14.9	36.27
Aug-01	150.5	134.9	15.6	37.59
Total				
Based on sample²				
Nov-99 FC	27.1	26.4	0.8	24.09
Nov-99 WFTC	54.5	48.7	5.8	30.98
Feb-00 FC	5.9	5.7	-	23.66
Feb-00 WFTC	93.1	83.6	9.5	31.26
May-00	110.6	100.4	10.2	32.25
Aug-00	124.0	112.5	11.5	33.48
Nov-00	130.0	116.8	13.2	35.29
Feb-01	136.9	122.7	14.2	35.46
May-01	144.9	129.9	15.0	35.87
Based on all awards²				
May-01	145.7	130.2	15.5	36.39
Aug-01	154.5	138.4	16.1	37.30

¹ Cases dealt with by the Northern Ireland tax credit office are excluded from the "GB office" series.² See introduction to this section

Table 1.4 FC/WFTC recipients by employment status of the main earner, August 1999 - August 2001.

	<i>Thousands - United Kingdom</i>					
	Number of recipients			Average awards (£ per week)		
	All cases	Employees	Self employed	All cases	Employees	Self employed
Based on 5 per cent sample for Great Britain²						
Aug-99	817.0	723.3	93.7	63.03	59.96	86.74
Nov-99	965.3	868.5	96.8	66.20	63.47	90.67
Feb-00	1,025.9	928.4	97.5	70.77	68.18	95.41
May-00	1,061.4	962.4	98.9	73.28	70.73	98.05
Aug-00	1,129.1	1,026.4	102.7	76.86	74.16	103.79
Nov-00	1,167.8	1,058.9	108.9	80.92	78.11	108.90
Feb-01	1,225.7	1,111.3	114.4	79.58	76.80	106.40
May-01	1,259.5	1,141.6	117.9	79.57	76.84	106.06
Based on all awards²						
May-01	1,251.4	1,137.1	114.3	79.69	77.01	106.34
Aug-01	1,269.8	1,153.2	116.5	82.21	79.47	109.29

¹ See introduction to this section

In this and other tables, the employment status is "Self employed" if the main earner has a source of income from self employment and no source of income as an employee.

Table 2.1 : Recipient families by family type.

	<i>Thousands - United Kingdom</i>		
	All cases	Employees	Self employed
All cases	1,269.8	1,153.2	116.5
Couples	616.3	528.3	88.1
Male main earner	496.9	417.7	79.1
Female main earner	119.5	110.5	8.9
Lone parents	653.4	625.0	28.5
Male	27.7	23.0	4.7
Female	625.7	602.0	23.8

Source: All awards

Chart 3 : Distribution of recipient families by type.

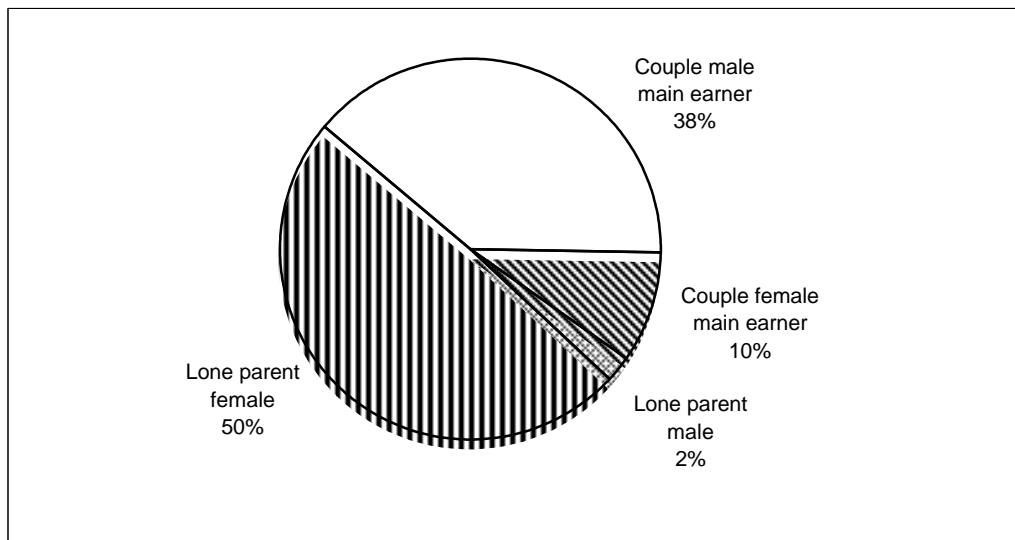


Table 2.2 : Recipient families by family type and age of the main earner.

Thousands - United Kingdom

	Age of main earner						Average age of main earner
	All cases	Under 20	20 - 29	30 - 39	40 - 49	50 and over	
All cases	1,269.8	8.5	281.6	623.4	308.3	48.0	35
Couples	616.3	3.3	138.1	302.0	143.9	29.0	35
Lone parents	653.4	5.2	143.5	321.4	164.4	19.0	35

Source: All case - all awards; other columns - 5 per cent sample

Chart 4 : Distribution of recipient families by age of the main earner.

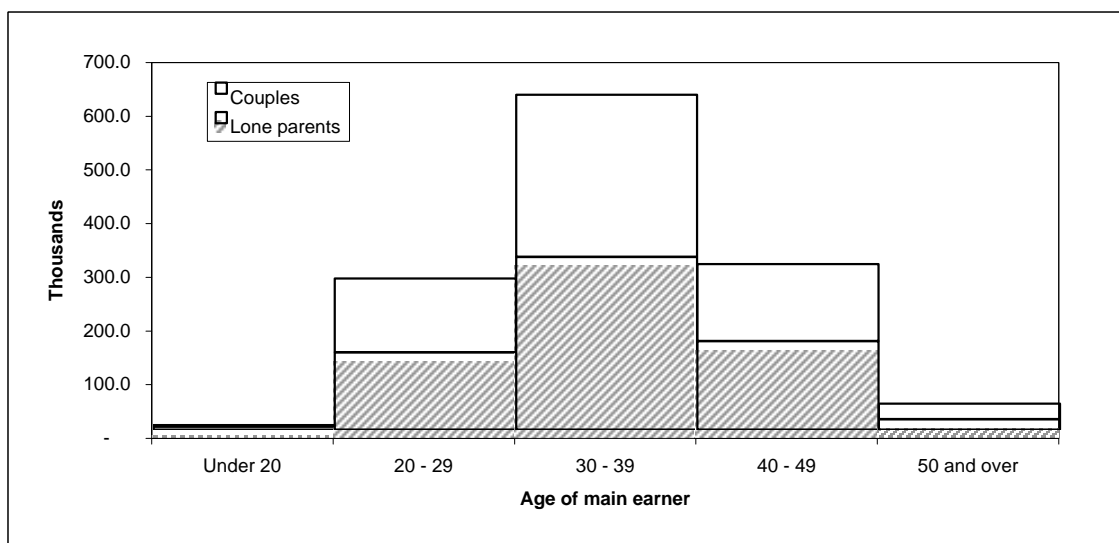


Table 3.1 : Family type of recipients, by weekly amount of award.

Thousands - United Kingdom

	All cases	Couples		Lone parents			
		All couples	Male main earner	Female main earner	All lone parents	Male	Female
All cases	1,269.8	616.3	496.9	119.5	653.4	27.7	625.7
Under £10.00	29.7	22.4	19.8	2.6	7.3	0.9	6.4
£10.00 - £19.99	43.7	30.9	27.2	3.8	12.8	1.4	11.4
£20.00 - £29.99	56.2	37.6	32.8	4.9	18.6	1.9	16.7
£30.00 - £39.99	69.8	43.8	37.7	6.1	26.0	2.4	23.6
£40.00 - £49.99	81.4	48.1	40.8	7.4	33.3	2.6	30.7
£50.00 - £59.99	93.2	50.8	42.6	8.2	42.4	2.7	39.7
£60.00 - £69.99	102.9	50.3	40.8	9.5	52.6	2.5	50.1
£70.00 - £79.99	132.0	51.9	40.4	11.5	80.1	2.8	77.3
£80.00 - £89.99	161.4	54.7	41.7	13.0	106.6	3.1	103.5
£90.00 - £99.99	92.1	42.0	32.2	9.8	50.1	2.3	47.8
£100.00 - £119.99	207.8	82.6	61.4	21.3	125.1	2.7	122.4
£120 and over	199.4	101.0	79.7	21.3	98.4	2.2	96.2

*Source: All awards***Table 3.2 : Average weekly award by family type.**

£ per week - United Kingdom

	All cases	Employees	Self employed
All cases	82.21	79.47	109.29
Couples	77.66	72.29	109.85
Male main earner	75.96	69.53	109.91
Female main earner	84.73	82.74	109.31
Lone parents	86.50	85.55	107.53
Male	68.77	62.80	97.89
Female	87.29	86.42	109.45

*Source: All awards***Table 3.3 : Recipients of awards not subject to income taper by family type and employment status of the main earner.**

Thousands - United Kingdom

	All cases	Employees	Self employed
All cases	308.4	251.7	56.7
With 30-hour credit	50.5	9.7	40.8
Other	257.9	242.0	15.9
Couples	103.6	66.8	36.8
With 30-hour credit	34.3	4.3	30.0
Other	69.3	62.5	6.8
Lone parents	204.9	184.9	20.0
With 30-hour credit	16.3	5.5	10.8
Other	188.6	179.4	9.2

Source: All awards

Table 4.1 : Children in recipient families, by family type and employment status of the main earner.

Thousands - United Kingdom

	All cases	Employees	Self employed
All cases	2,496.1	2,229.1	267.0
Couples	1,417.3	1,200.3	217.0
Male main earner	1,168.3	971.5	196.8
Female main earner	249.0	228.8	20.2
Lone parents	1,078.7	1,028.8	50.0
Male	43.9	36.4	7.5
Female	1,034.9	992.4	42.5

*Source: All awards***Table 4.2 : Average number of children in recipient families, by family type and employment status of the main earner.**

Thousands - United Kingdom

	All cases	Employees	Self employed
All cases	2.0	1.9	2.3
Couples	2.3	2.3	2.5
Male main earner	2.4	2.3	2.5
Female main earner	2.1	2.1	2.3
Lone parents	1.7	1.7	1.8
Male	1.6	1.6	1.6
Female	1.7	1.7	1.8

*Source: All awards***Table 4.3 : Children in recipient families, by family type, family size and age.**

Thousands - United Kingdom

	All children	Age of child			
		0 - 5	6 - 10	11 - 15	16 - 18
All cases					
All sizes	2,496.1	848.8	764.5	700.0	182.7
1 child	485.9	210.3	104.9	119.4	51.3
2 children	951.0	329.4	294.2	263.1	64.3
3 children	634.5	189.7	217.7	187.7	39.5
4 or more children	424.5	119.4	147.7	129.8	27.6
Couples					
All sizes	1,417.3	578.9	423.4	336.2	78.8
1 child	149.9	92.0	19.6	26.9	11.4
2 children	488.6	231.4	135.4	97.7	24.1
3 children	429.3	150.7	146.7	110.2	21.7
4 or more children	349.5	104.8	121.7	101.4	21.6
Lone parents					
All sizes	1,078.7	269.9	341.1	363.8	103.9
1 child	336.0	118.3	85.3	92.5	39.9
2 children	462.4	98.0	158.8	165.4	40.2
3 children	205.2	39.0	71.0	77.5	17.8
4 or more children	75.0	14.6	26.0	28.4	6.0

Source: All children column - all awards; other columns - 5 per cent sample

Table 4.4 : Recipient families, by type, size and weekly amount of award.*Thousands - United Kingdom*

	Weekly amount of award								Average weekly WFTC £ per week
	All cases	Under £20.00	£20.00 - £39.99	£40.00 - £59.99	£60.00 - £79.99	£80.00 - £99.99	£100.00 - £119.99	£120.00 and over	
All cases									
All sizes	1,269.8	73.5	126.0	174.7	234.9	253.5	207.8	199.4	82.21
1 child	485.9	38.3	65.7	89.9	130.7	131.3	18.0	11.9	64.08
2 children	475.5	27.2	45.5	61.8	73.3	84.8	147.5	35.5	81.13
3 children	211.6	6.8	12.5	18.8	24.8	28.8	31.5	88.3	101.45
4 or more children	96.8	1.1	2.3	4.1	6.1	8.5	10.8	63.8	136.47
Couples									
All sizes	616.3	53.3	81.4	99.0	102.2	96.7	82.6	101.0	77.66
1 child	149.9	22.8	31.7	34.2	30.6	29.7	0.7	0.3	51.78
2 children	244.3	23.1	35.9	44.1	44.4	36.1	51.7	9.0	68.33
3 children	143.1	6.4	11.6	16.8	21.4	22.9	20.4	43.6	90.99
4 or more children	79.0	1.1	2.3	3.9	5.8	8.0	9.8	48.1	131.43
Lone parents									
All sizes	653.4	20.1	44.6	75.7	132.7	156.7	125.1	98.4	86.50
1 child	336.0	15.6	34.0	55.8	100.1	101.6	17.4	11.5	69.56
2 children	231.2	4.1	9.6	17.8	28.9	48.7	95.8	26.4	94.66
3 children	68.4	0.4	0.9	2.0	3.4	5.9	11.1	44.7	123.32
4 or more children	17.8	0.0	0.1	0.2	0.3	0.5	1.0	15.7	158.85

Source: All awards

Table 5.1 : Recipient families by broad occupation group of the main earner.

	<i>Thousands - United Kingdom</i>	
	All cases	Per cent of employed population²
All occupations	1,269.8	4.4%
Major groups - SOC 2000¹		
Managers and senior officials	15.7	0.4%
Professional occupations	28.0	0.8%
Associate professional and technical occupations	114.6	3.0%
Administrative and secretarial occupations	271.3	7.3%
Skilled trades occupations	186.8	5.4%
Personal service occupations	175.0	8.5%
Sales and customer service occupations	164.5	7.7%
Process, plant and machinery operatives	133.4	5.2%
Elementary occupations	180.4	5.0%

Source: All occupations row - all awards; other rows - 5 per cent sample

Notes:

1. Major groups of the 2000 version of the Standard Occupational Classification (SOC) published by the Office for National Statistics. The compilation of each major group from the code recorded for each sample WFTC recipient is shown at Appendix B.
2. For SOC 2000, the estimated number of employees and self-employed people in the major group at Summer 2001, from the Labour Force Survey.

Table 5.2 : Recipient families by family type and occupation of the main earner.*Thousands - United Kingdom*

	All cases	Couples	Lone parents
All occupations	1,269.8	616.3	653.4
Managers and senior officials	15.7	8.3	7.4
Professional occupations	28.0	9.9	18.1
Associate professional and technical occupations	114.6	53.8	60.8
of which:-			
Health and social welfare associate professionals.	27.8	7.6	20.2
Administrative and secretarial occupations	271.3	87.3	184.0
of which:-			
Administrative officers grades below EO in the Civil Service and local government	30.3	10.7	19.6
Clerks and cashiers	97.9	32.2	65.7
Receptionists and telephonists	29.4	8.2	21.3
Secretaries and typists	27.8	7.8	20.0
Other clerical occupations	71.6	21.9	49.7
Skilled trades occupations	186.8	128.1	58.7
of which:-			
Metal working, skilled workers.	32.7	18.0	14.7
Construction trades, skilled workers.	42.0	33.3	8.7
Chefs and cooks	30.5	17.1	13.4
Personal service occupations	175.0	55.1	119.9
of which:-			
Health and childcare occupations.	121.0	35.8	85.2
Domestic staff	36.4	14.8	21.6
Sales and customer service occupations	164.5	66.5	98.0
of which:-			
Sales assistants	129.0	48.5	80.6
Sales occupations.	30.2	14.8	15.4
Process, plant and machinery operatives	133.4	100.2	33.2
of which:-			
Assemblers/lineworkers on electrical/electronic goods, cars, packers, bottlers, graders, sorters etc.	36.5	22.3	14.2
Transport and machinery operatives.	35.5	29.4	6.0
Taxi - drivers.	27.5	25.2	2.3
Elementary occupations	180.4	107.1	73.3
of which:-			
Construction occupations, unskilled workers	23.2	21.0	2.2
Cleaners, domestics, window cleaners and road sweepers	53.8	22.8	31.0

Source: All occupations row - all awards; other rows - 5 per cent sample

Note: Only occupation groups with more than 20,000 WFTC awards are listed in this table. Estimates for smaller groups are available on request. See the full list at Appendix B.

Table 5.3 : Average award by family type and occupation of the main earner.*£ per week - United Kingdom*

	All cases	Couples	Lone parents
All occupations	82.21	77.66	86.50
Managers and senior officials	68.52	65.91	71.47
Professional occupations	74.83	70.65	77.10
Associate professional and technical occupations	74.34	67.96	80.00
of which:-			
Health and social welfare associate professionals.	73.22	67.17	75.49
Administrative and secretarial occupations	77.11	68.52	81.19
of which:-			
Administrative officers grades below EO in the Civil Service and local government	72.72	64.37	77.29
Clerks and cashiers	79.48	71.23	83.52
Receptionists and telephonists	80.17	67.49	85.03
Secretaries and typists	75.52	68.34	78.32
Other clerical occupations	74.91	65.51	79.04
Skilled trades occupations	83.77	82.40	86.75
of which:-			
Metal working, skilled workers.	77.96	73.48	83.46
Construction trades, skilled workers.	81.66	80.33	86.72
Chefs and cooks	93.52	96.25	90.03
Personal service occupations	86.25	74.21	91.78
of which:-			
Health and childcare occupations.	85.66	73.01	90.98
Domestic staff	85.28	76.15	91.52
Sales and customer service occupations	86.41	77.61	92.38
of which:-			
Sales assistants	86.56	75.33	93.31
Sales occupations.	84.73	81.82	87.55
Process, plant and machinery operatives	83.32	82.95	84.45
of which:-			
Assemblers/lineworkers on electrical/electronic goods, cars, packers, bottlers, graders, sorters etc.	75.02	69.59	83.53
Transport and machinery operatives.	73.07	72.06	78.01
Taxi - drivers.	117.88	119.64	98.39
Elementary occupations	86.02	80.06	94.73
of which:-			
Construction occupations, unskilled workers	78.72	78.62	79.64
Cleaners, domestics, window cleaners and road sweepers	93.24	87.20	97.68

Source: All occupations row - all awards; other rows - 5 per cent sample

Note: Only occupation groups with more than 20,000 WFTC awards are listed in this table.
Estimates for smaller groups are available on request. See the full list at Appendix B.

Table 5.4 : Recipient families by employment status and occupation of the main earner.*Thousands - United Kingdom*

	All cases	Employees	Self employed
All occupations	1,269.8	1,153.2	116.5
Managers and senior officials	15.7	13.8	1.8
Professional occupations	28.0	26.2	1.8
Associate professional and technical occupations	114.6	105.6	9.1
of which:-			
Health and social welfare associate professionals.	27.8	27.1	0.7
Administrative and secretarial occupations	271.3	266.5	4.7
of which:-			
Administrative officers grades below EO in the Civil Service and local government	30.3	30.3	-
Clerks and cashiers	97.9	97.2	0.7
Receptionists and telephonists	29.4	29.3	-
Secretaries and typists	27.8	26.8	1.0
Other clerical occupations	71.6	70.1	1.6
Skilled trades occupations	186.8	151.4	35.4
of which:-			
Metal working, skilled workers.	32.7	31.3	1.4
Construction trades, skilled workers.	42.0	27.9	14.1
Chefs and cooks	30.5	28.4	2.0
Personal service occupations	175.0	162.9	12.2
of which:-			
Health and childcare occupations.	121.0	115.8	5.2
Domestic staff	36.4	35.1	1.3
Sales and customer service occupations	164.5	155.4	9.2
of which:-			
Sales assistants	129.0	128.2	0.9
Sales occupations.	30.2	24.5	5.7
Process, plant and machinery operatives	133.4	107.6	25.9
of which:-			
Assemblers/lineworkers on electrical/electronic goods, cars, packers, bottlers, graders, sorters etc.	36.5	36.2	-
Transport and machinery operatives.	35.5	34.0	1.5
Taxi - drivers.	27.5	4.8	22.6
Elementary occupations	180.4	163.9	16.5
of which:-			
Construction occupations, unskilled workers	23.2	19.3	3.9
Cleaners, domestics, window cleaners and road sweepers	53.8	48.2	5.6

Source: All occupations row - all awards; other rows - 5 per cent sample

Note: Only occupation groups with more than 20,000 WFTC awards are listed in this table. Estimates for smaller groups are available on request. See the full list at Appendix B.

Table 5.5 : Average award by employment status and occupation of the main earner.*£ per week - United Kingdom*

	All cases	Employees	Self employed
All occupations	82.21	79.47	109.29
Managers and senior officials	68.52	63.45	106.91
Professional occupations	74.83	72.89	103.42
Associate professional and technical occupations	74.34	71.52	107.25
of which:-			
Health and social welfare associate professionals.	73.22	72.59	97.00
Administrative and secretarial occupations	77.11	76.62	104.60
of which:-			
Administrative officers grades below EO in the Civil Service and local government	72.72	72.71	-
Clerks and cashiers	79.48	79.36	96.17
Receptionists and telephonists	80.17	80.12	-
Secretaries and typists	75.52	74.37	106.90
Other clerical occupations	74.90	74.20	106.55
Skilled trades occupations	83.77	78.50	106.26
of which:-			
Metal working, skilled workers.	77.96	76.39	113.78
Construction trades, skilled workers.	81.66	71.39	101.88
Chefs and cooks	93.52	91.74	118.38
Personal service occupations	86.25	84.64	107.71
of which:-			
Health and childcare occupations.	85.66	84.44	112.96
Domestic staff	85.28	84.39	108.71
Sales and customer service occupations	86.41	85.00	110.28
of which:-			
Sales assistants	86.56	86.45	101.88
Sales occupations.	84.73	78.42	111.99
Process, plant and machinery operatives	83.32	74.17	121.41
of which:-			
Assemblers/lineworkers on electrical/electronic goods, cars, packers, bottlers, graders, sorters etc.	75.02	74.69	-
Transport and machinery operatives.	73.07	71.63	106.18
Taxi - drivers.	117.88	90.78	123.63
Elementary occupations	86.02	84.43	101.85
of which:-			
Construction occupations, unskilled workers	78.72	75.14	96.66
Cleaners, domestics, window cleaners and road sweepers	93.24	91.45	108.63

Source: All occupations row - all awards; other rows - 5 per cent sample

Note: Only occupation groups with more than 20,000 WFTC awards are listed in this table. Estimates for smaller groups are available on request. See the full list at Appendix B.

Table 6.1 : Recipient families by family type, and by employment status and gross weekly earnings of the main earner.*Thousands - United Kingdom*

	All cases	Couples	Lone parents	Employees	Self employed
All cases	1,269.8	616.3	653.4	1,153.2	116.5
Under £40	32.8	16.7	16.1	9.7	23.1
£40 - £79.99	194.7	71.1	123.6	166.1	28.6
£80 - £119.99	242.7	84.2	158.5	213.6	29.1
£120 - £159.99	179.2	72.1	107.1	162.7	16.5
£160 - £199.99	161.5	81.4	80.1	153.3	8.2
£200 - £249.99	189.4	113.1	76.3	183.5	5.9
£250 - £299.99	145.1	94.3	50.8	142.0	3.1
£300 and over	124.4	83.4	41.0	122.3	2.1
Average (£ per week)	170.52	191.45	150.78	177.73	99.21

*Source: 5 per cent sample***Table 6.2 : Recipient families by family type, and by employment status and hours worked by the main earner.***Thousands - United Kingdom*

	All cases	Number of hours normally worked, per week, by main earner						Average normal weekly hours worked
		16 < 20	20 < 24	24 < 30	30 < 36	36 < 40	40 and over	
All cases	1,269.8	244.8	163.6	115.4	191.5	258.9	295.4	30.9
Couples	616.3	65.8	44.9	34.6	79.8	151.6	239.7	35.2
Lone parents	653.4	179.0	118.7	80.8	111.8	107.4	55.8	26.9
Employees	1,153.2	232.1	156.4	110.3	163.2	251.0	240.3	30.3
Couples	528.3	60.0	40.9	31.5	58.6	145.2	192.0	34.6
Lone parents	625.0	172.0	115.5	78.8	104.6	105.8	48.4	26.7
Self employed	116.5	12.7	7.3	5.1	28.4	8.0	55.1	36.7
Couples	88.1	5.8	4.0	3.2	21.1	6.4	47.7	38.6
Lone parents	28.5	7.0	3.3	2.0	7.2	1.6	7.4	30.6

*Source: All awards***Table 6.3 : Awards with the 30-hour credit, by family type and employment status of the main earner.***Thousands - United Kingdom*

	All cases	Employees	Self employed
All cases	758.4	665.1	93.3
Couples	483.4	406.4	77.0
Male main earner	422.7	353.0	69.7
Female main earner	60.8	53.5	7.3
Lone parents	274.9	258.7	16.3
Male	21.6	18.0	3.6
Female	253.3	240.6	12.7

Source: All awards

Table 7.1 : Recipient couples by whether the partner of the main earner is working.

Thousands - United Kingdom

	Number of couples (000's)	Average award £ per week	Average partner's net earnings ¹ £ per week
All Couples	616.3	77.66	11.62
Partner not working	499.8	82.05	-
Partner working	116.5	53.44	68.49

Source: Overall number and average award - all awards; other figures - 5 per cent sample

Notes:

1. Net earnings are after deductions for tax, national insurance, and 1/2 pension contributions.

Table 7.2 : Recipient families whose incomes include social security benefits which are brought to account, by family type.

Thousands - United Kingdom

	All recipients	Couples	Lone parents
Pensions:			
Retirement pension	0.7	0.7	-
Bereavement / widow's benefit	5.0	-	5.0
Unemployment related benefits:			
Jobseeker's allowance	7.4	7.4	-
Sickness and disability benefits:			
Incapacity benefit	20.5	20.6	-
Severe disablement allowance	2.3	2.3	-
Industrial injuries disablement benefit	3.0	2.6	-
War disablement pension	1.0	1.0	-
Carer benefits:			
Invalid care allowance	24.0	21.7	2.3
Others:	0.6	-	-

Source: 5 per cent sample

Note: Certain benefits are excluded as they are not brought to account when calculating the level of award. Examples are Child benefit, Housing benefit, Council tax benefit and Disability living allowance.

Table 7.3 : Recipient families whose incomes include other income which is brought to account, by family type.*Thousands - United Kingdom*

	All cases	Couples		Lone parents
		Male main earner	Female main earner	
Total (one or more types)	14.9	7.4	2.7	4.8
Benefits in kind	1.5	1.1	-	-
Rent and others	13.2	6.3	2.6	4.3

*Source: 5 per cent sample***Table 7.4 : Recipient families with savings over £3,000, by family type.***Thousands - United Kingdom*

	Total	Total		On maximum awards		On income taper	
		Savings over £3,000 to £5,000	Savings over £5,000 to £8,000	Savings over £3,000 to £5,000	Savings over £5,000 to £8,000	Savings over £3,000 to £5,000	Savings over £5,000 to £8,000
All cases	20.7	12.4	8.3	1.1	-	11.3	7.9
Couples	12.5	7.4	5.1	0.5	-	6.9	4.9
Lone Parents	8.2	5.0	3.2	0.6	-	4.5	3.0
Employees	18.0	11.0	7.0	0.6	-	10.4	6.9
Couples	10.4	6.3	4.1	-	-	6.1	4.1
Lone Parents	7.6	4.7	2.9	-	-	4.3	2.8
Self employed	2.8	1.5	1.3	0.5	-	1.0	1.0
Couples	2.1	1.1	1.0	-	-	0.8	0.8
Lone Parents	0.7	-	-	-	-	-	-

Source: 5 per cent sample

Table 8.1 : Recipient families with childcare tax credit, by family type.

Thousands - United Kingdom

	All cases	Extra WFTC received			
		Up to £28.00	£28.00 - £41.99	£42.00 - £69.99	£70 and above
All cases	154.5	68.6	29.3	41.9	14.8
Lone parents	138.4	60.0	26.2	38.6	13.7
Couples	16.1	8.6	3.1	3.3	1.1
Average extra amount of Working Families' Tax Credit (£ per week)	37.30	14.97	35.01	56.73	90.22

Source: All cases column - all awards; other columns - 5 per cent sample

Table 8.2 : Recipient families with a disallowed claim for childcare tax credit.

Thousands - United Kingdom

	Disallowed claim for childcare tax credit
All disallowed cases	7.1
No child under 15 (or 16 if disabled)	1.1
Only one parent working at least 16 hours per week	4.5
No approved childcare	1.5

Source: 5 per cent sample

Table 8.3 : Recipient families with childcare tax credit, by amount paid for childcare and family type.*Thousands - United Kingdom*

	All cases	Family type	
		Lone parents	Couples
All cases	154.5	138.4	16.1
Up to £10.00	10.4	9.4	1.0
£10.01 - £20.00	19.7	17.9	1.8
£20.01 - £30.00	17.0	15.5	1.5
£30.01 - £40.00	16.3	14.9	1.4
£40.01 - £50.00	15.3	13.6	1.7
£50.01 - £60.00	14.0	12.4	1.6
£60.01 - £70.00	11.2	9.8	1.4
£70.01 - £80.00	10.3	9.1	1.2
£80.01 - £90.00	10.1	9.1	1.0
£90.01 - £100.00	9.3	8.4	0.9
£100.01 - £120.00	10.5	9.3	1.2
£120.01 - £140.00	4.2	3.9	0.3
Over £140.00	6.2	5.1	1.1
Average allowed childcare charges (£ per week)	57.75	57.29	61.68

*Source: All cases row - all awards; other rows - 5 per cent sample***Table 8.4 : Recipient families with childcare tax credit, by type of childcare used and family type.***Thousands - United Kingdom*

	All cases	Family type	
		Lone parents	Couples
Total	154.5	138.4	16.1
Registered childminder only	54.0	48.8	5.2
Nursery only	55.6	47.9	7.7
Other approved childcare	22.2	20.9	1.3
More than one type	10.6	9.5	1.1

Source: Total row - all awards; other rows - 5 per cent sample

Table 9.1 : Recipient families by continuous duration on award.*Thousands - United Kingdom*

	All cases	Couples	Lone parents
All cases	1,269.8	616.3	653.5
less than 1 month	47.8	26.4	21.4
1-2 months	61.7	35.4	26.3
2-3 months	57.8	31.6	26.2
3-4 months	51.2	29.2	22.0
4-5 months	74.9	41.3	33.6
5 months - 26 weeks	64.1	38.5	25.6
less than 26 weeks	357.5	202.4	155.1
26 weeks - 7 months	47.4	24.0	23.4
7-8 months	33.6	17.1	16.5
8-9 months	26.9	13.6	13.3
9-10 months	54.5	26.8	27.7
10-11 months	37.1	18.2	18.9
11 months - 52 weeks	37.1	17.3	19.8
less than 52 weeks	594.1	319.4	274.7
52 weeks - 18 months	171.9	80.4	91.5
18-24 months	183.6	78.5	105.1
52 weeks - 2 years	355.5	158.9	196.6
2-3 years	117.5	49.3	68.2
3-4 years	73.8	30.6	43.2
4 years and over	128.9	58.3	70.6
Average duration on FC/WFTC (months)	20.4	19.0	21.8

Source: 5 per cent sample

Note. Duration months are defined by dividing the number of days between the start date of the first award and the reference date by the average number of days in a month.

Appendix A : Sampling error

Some figures contained in this publication are based on a 5% sample of all WFTC awards dealt with by the GB office, as indicated in the source descriptors for each table. The sample is drawn to represent the characteristics of all recipients on the WFTC system.

Therefore, if the number of cases in a sample with characteristic A is 500, we can say that the estimated number of recipients with characteristic A on the WFTC system is equal to 500 multiplied by 20, that is, 10,000 cases.

The sample which has been taken is just one of many different samples which could be taken, therefore the total calculated number of recipients with characteristic A is only an estimate of the actual number of recipients. If another sample had been taken then the estimate for the same characteristic may have been slightly different.

The table overleaf shows the amount of variation that can be expected from the estimated number of recipients with a certain characteristic.

For example, if from a 5% sample there are 500 recipients with characteristic A then the estimated number of recipients in the population with the same characteristic is 10,000. We could reasonably expect the actual figure to lie between 9,150 and 10,850.

Formula

Two formulae are used to calculate the standard error and the associated confidence intervals. For samples with less than 30 cases the binomial distribution is used to calculate the standard error. For samples with greater than 30 cases the normal approximation to the binomial is used. The normal approximation formula used to calculate the standard error is:

$\sqrt{(1-F)S} \frac{1}{F}$, where F is the sampling factor (e.g. 0.05 for a 5% sample) and S is the number of sample cases with the characteristic.

In an example where there were 50 sample cases with characteristic A taken from a sample representing 5% of the population, the standard error is:

$$\sqrt{(1-0.05)50} \frac{1}{0.05} = 137.8... \approx 138$$

There is a 95% probability that the actual population value falls within 1.96 standard errors of the grossed up sample value. For the above example this would be:

$$(50 / 0.05) \pm 1.96 \times 138 = (730, 1270)$$

This range is known as the 95% confidence interval.

Please note that this method can only be applied to estimates of number of recipients and not to estimating the sampling error associated with averages such as average weekly award etc.

Table A1 : Confidence intervals for a 5% sample

Estimated value	95% confidence interval	Confidence interval as a % of the estimate
500	328 to 732	.
1,000	± 270	± 27.0%
2,500	± 427	± 17.1%
5,000	± 604	± 12.1%
10,000	± 850	± 8.5%
25,000	± 1350	± 5.4%
50,000	± 1910	± 3.8%
100,000	± 2700	± 2.7%
1,000,000	± 9000	± 0.9%

Appendix B : Occupation codes

Standard Occupational Classification, 2000

Showing the arrangements of codes used to classify main earners between the major groups.

1. MANAGERS AND SENIOR OFFICIALS

Managers and proprietors in the service industries: including estate managers, garage managers, restaurant managers, publicans, hotel managers etc.

2. PROFESSIONAL OCCUPATIONS

Includes health, teaching, business, finance and legal professionals along with senior scientists.

3. ASSOCIATE PROFESSIONAL AND TECHNICAL OCCUPATIONS

Scientific technicians; laboratory, engineering, electrical technicians etc.

Surveyors and Inspectors.

Computer analysts, ship/aircraft officers (non military), air traffic controllers, legal, business and financial associate professional; includes personnel, ship officers, underwriters etc.

Health and social welfare associate professionals; includes nurses, youth workers, health and safety officers etc.

Military personnel - NCO's and other ranks.

Protective Service occupations; police, fire, traffic wardens, prison wardens etc.

Literary, artistic and sports professionals.

Buyers and brokers.

Sales representatives

Other, includes trainers, driving Instructors etc.

4. ADMINISTRATIVE AND SECRETARIAL OCCUPATIONS

Senior and middle managers in large organisations, e.g. EO and above in the Civil Service, officers in the military, bank management etc.

Administrative officers grades below EO in Civil Service / local government.

Clerks and cashiers.

Receptionists and telephonists.

Secretaries and typists.

Other clerical occupations; data processing, office machine operators etc.

5. SKILLED TRADES OCCUPATIONS

Farmers.

Gardeners.

Metal working, skilled workers; machine setters, sheet metal workers, plumbers, welders etc.

Vehicle trades; mechanics, coach builders, panel beaters, paint sprayers, tyre/exhaust fitters.

Electrical/electronic trades; electricians, radio, TV/video engineer, computer engineer etc.

Construction trades, skilled workers; bricklayers, painters and decorators, scaffolders etc.

Textile trades.

Printing trades; print finishers, bookbinders, screen printers etc.

Food preparation trades; butchers, bakers, poultry dressers etc.

Chefs and cooks

Other; glass and ceramic workers, piano tuners, musical instrument makers etc.

6. PERSONAL SERVICE OCCUPATIONS

Health and childcare occupations; assistants and nursery nurses, care assistants, ambulance staff etc.

Travel attendants; including flight attendants and railway staff.

Hairdressers and beauticians.

Domestic staff; housekeepers, caretakers, launderers, dry cleaners etc.

7. SALES AND CUSTOMER SERVICE OCCUPATIONS

Sales assistants; check-out operators, petrol pump attendants, shelf fillers etc.

Sales occupations; telephone sales, merchandisers and window dressers etc.

Mobile, market and door to door sales and agents; roundsmen/women, street market traders, scrap metal merchants etc.

8. PROCESS, PLANT AND MACHINERY OPERATIVES

Food, drink and tobacco process operatives; bakery, confectionery, brewery.

Textile and tannery process operatives.

Chemical and plastic process operatives.

Metal processing.

Metal working, unskilled workers.

Plant operatives; pipe layers, woodworking machine operatives. water and sewerage plant attendants etc.

Assemblers/lineworkers on electrical/electronic goods, cars, packers, bottlers, graders, sorters etc.

Transport and machinery operatives; bus driver/inspectors, lorry drivers, railway workers etc.

Taxi drivers.

9. ELEMENTARY OCCUPATIONS

Other agricultural, forestry and fishing occupations (not farmers or managers); farm, fishing and forestry workers etc.

Woodworking trades.

Construction occupations, unskilled workers; building trade mates, paviors, road and rail construction workers etc.

Other occupations in mining and manufacturing; labourers in mining, engineering, foundries, manufacturing processes etc.

Postal workers; mail sorters, messengers and couriers.

Hotel porters, kitchen porters, catering assistants, counter hands etc.

Other transport occupations; dockers, porters, refuse collectors, car park attendants etc.

Waiters and waitresses.

Bar staff excluding cleaners.

Cleaners, domestics, window cleaners and road sweepers.

Security guards.

Note: The occupations covered by some of the codes to which individual main earners are coded span more than one major group in SOC 2000. Such codes have been allocated to the major group with the largest number in employment nationally. For example, the definition of "Sales Assistants" covers occupations in both major groups 7 and 9. Nationally, however, the majority of those in employment covered by "Sales Assistants" are in occupations falling within major group 7. "Sales Assistants" has therefore been allocated to major group 7.

