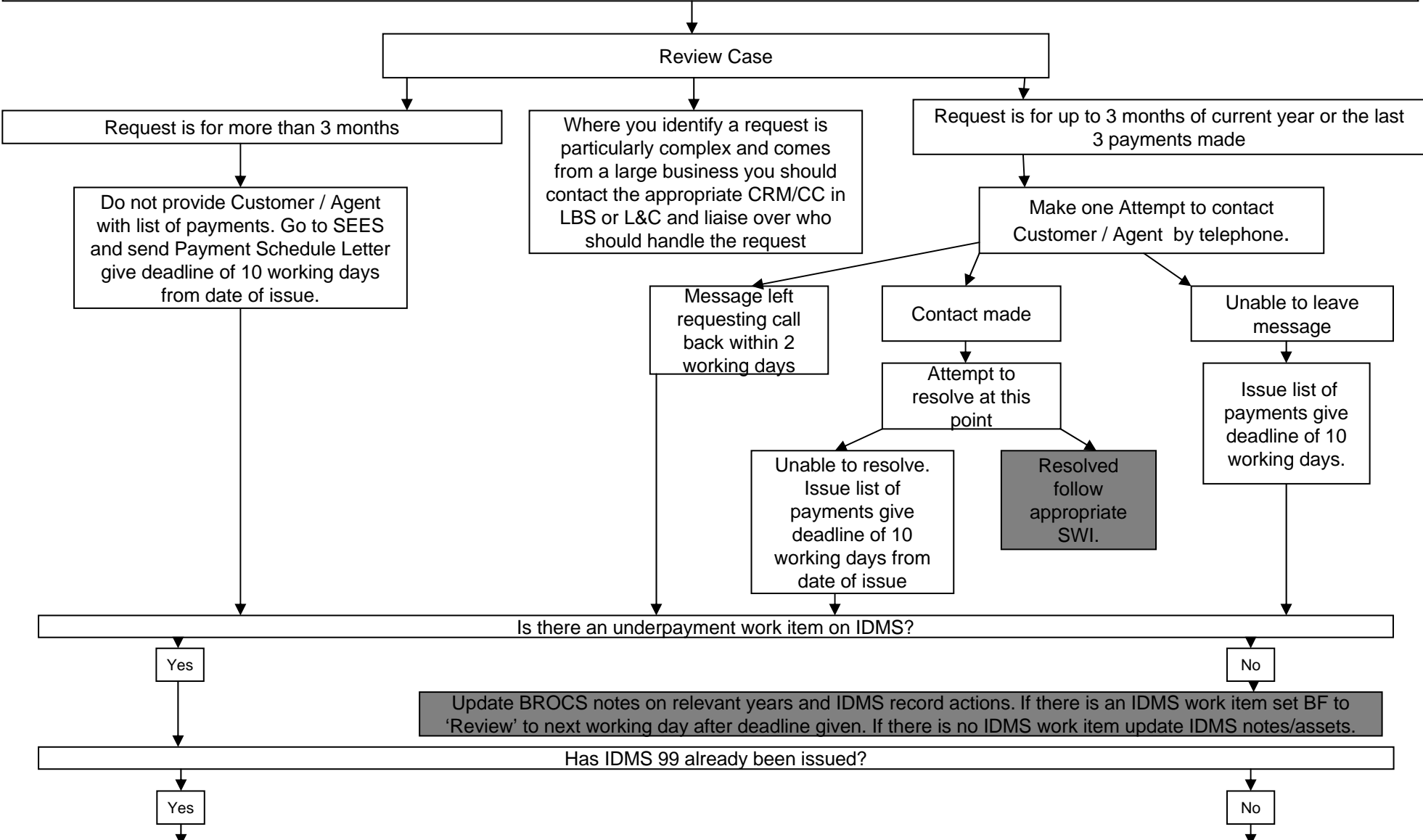


**DTO Process map for Payment schedule requests**

Written request for payment schedule



Follow appropriate Transfer to Enforcement SWI & BF to next working day after deadline given. Update IDMS and add BROCS notes on relevant years if schedule letter or list of payments has been issued.

Set next action to 'IDMS 99 Queue' and BF to next working day after deadline given. Update IDMS and add BROCS notes on relevant years if schedule letter or list of payments has been issued.

# DTO Process map for Payment schedule requests

