



INLAND REVENUE
Analysis and Research

Disabled Person's Tax Credit Statistics

Quarterly Enquiry

United Kingdom October 2001



A National Statistics Publication
© Crown Copyright 2002

Contact point for enquiries and requests for further copies:-

Analysis and Research (TCASP)
Inland Revenue
Room 54 - New Wing
Somerset House
London
WC2R 1LB
☎ : 020 - 7438 6275
Fax : 020 - 7438 4329
E-mail : ar_tcasp.ir.sh@gtnet.gov.uk

This, and issues back to October 1999 can be found on the Inland Revenue web site : www.inlandrevenue.gov.uk / statistics

The January 2002 issue is due to be published on the web site on Tuesday 11th June 2002

A NATIONAL STATISTICS PUBLICATION

National Statistics are produced to high professional standards set out in the National Statistics Code of Practice. They undergo regular quality assurance reviews to ensure that they meet customer needs. They are produced free from any political interference.

For general enquiries about National Statistics, contact the National Statistics Public Enquiry Service on

☎ : 020 - 7533 5888
minicom : 01633 812399
E-mail : info@statistics.gov.uk
Fax : 01633 652747
Letters : room DG/18, 1 Drummond Gate, LONDON, SW1V 2QQ

You can also find National Statistics on the internet - go to www.statistics.gov.uk

Disabled Person's Tax Credit Statistics
Quarterly Enquiry
United Kingdom
October 2001

Contents	PAGE
Introduction	1
Main findings	1
List of tables	2
Section 1 : Time series	4
Section 2 : Family type	7
Section 3 : Amount of award	10
Section 4 : Earnings and other income	12
Section 5 : Regional analysis	14
Section 6 : Historical DPTC	16

Introduction

Disabled Person's' Tax Credit (DPTC) is a tax credit available to adults who are in remunerative work for at least 16 hours per week, and who have an illness or disability which puts them at a disadvantage in getting a job.

Awards of DPTC cover 26 weeks. These tables cover recipients at 31 October 2001 (that is, with awards with start and end dates spanning this date).

DPTC replaced Disability Working Allowance (DWA) from 5 October 1999. Time series of the number of recipients of DPTC and DWA are also shown, but for dates before October 1999 figures are available only for cases dealt with by the Great Britain tax credit office (that is, excluding cases dealt with by the Northern Ireland office).

The figures in the tables are based on a 100% scan of awards. The scan was taken three months after the reference date, by which time almost all awards current at the reference date were processed and entered onto the computer system. To ensure that information about individuals is not disclosed, most cells containing less than five cases are shown as '-', and some other cells are bracketed together.

Section 5 shows the number of recipients in each country, and in each region of England. The numbers in each local authority and parliamentary constituency appear in "Working Families' and Disabled Person's Tax Credit Statistics: Geographical analyses", although for a different cycle of months; the November 2001 issue is due to be published on 9 April 2002.

Main Findings

There were 32,070 recipients of DPTC at 31 October 2001, 4 per cent higher than at 31 July 2001.

20,404 of the recipients were single adults (including lone parents), who had an average award of £66.31 per week. 11,666 were in couples; they had an average award of £95.39 per week.

The overall average award was £76.89 per week.

46 per cent of recipients had children. Their average weekly award was £112.97, compared with £46.02 for recipients with no children.

For 42 per cent of recipients, higher rate Disability living allowance, or an analogous benefit, was the main qualifying benefit. Lower rate Disability living allowance was the main qualifying benefit for a further 21 per cent.

For recipients with children, 64% of awards were over £100 per week.

The average gross weekly earnings of the recipients was £133.

List of Tables

Section 1 : Time series

Table 1.1	DWA/DPTC recipients by family type, January 1993 - October 2001.
Chart 1	DWA/DPTC recipients by family type, GB office, Jan 1993 - Oct 2001
Table 1.2	Average DWA/DPTC award by family type of recipients, January 1993 - October 2001.
Chart 2	Average DWA/DPTC award by family type of recipients, GB office, January 1993 - October 2001.

Section 2 : Family type

Table 2.1	Age and gender of recipients, and whether with children.
Chart 3	Recipients by age, and whether with children.
Table 2.2	Gender and family type of recipients, and average weekly award.
Chart 4	Family type and gender of recipients.
Table 2.3	Main qualifying benefit of recipients, by whether with children, and average weekly award.

Section 3 : Amount of award

Table 3.1	Family type and gender of recipients, by weekly amount of award.
Table 3.2	Family size and type of recipients, by weekly amount of award.
Chart 5	Recipients by number of children in family, and by family type.

Section 4 : Earnings and other income

- Table 4.1 Gross weekly earnings of recipients, by family type.
- Chart 6 Recipients by gross weekly earnings, and by whether with children.
- Table 4.2 Recipients whose family incomes include social security benefits which are brought to account, by family type.
- Table 4.3 Recipients whose families receive other income which is brought

Section 5 : Regional analysis

- Table 5.1 Recipients in each Government Office Region, by employment status and family type.
- Table 5.2 Average weekly award for recipients in each Government Office Region, by employment status and family type.

Section 6 : Historical DPTC

- Table 6.1 Main qualifying benefit of recipients of awards starting between October 1999 and October 2001, by type of award.
- Table 6.2 : Recipients of awards starting between October 1999 and October 2001 by type of award and family type.
- Table 6.3 : Disallowances between October 1999 and October 2001 by reason of disallowance.
- Table 6.4 : Recipients of renewal and repeat awards starting between October 1999 and October 2001 by disability type and age.

Section 1 : Time series

This section shows back quarterly series for the number of recipients of Disability Working Allowance and Disabled Person's Tax Credit, and their average awards.

For November 1999 and February 2000 the recipients are a mixture of Disability Working Allowance and Disabled Person's Tax Credit recipients. Disability Working Allowance recipients are those with awards starting up to 30 September 1999 and still current at the reference date.

The figures for July 2001 are slightly different to those published last time. They take account of more up to date information on backdated awards and any changes to the termination dates of awards.

Table 1.1 : DWA/DPTC recipients by family type, January 1993 - October 2001.*United Kingdom*

	All recipients		In couples		Singles	
	GB office ¹	Total	GB office ¹	Total	GB office ¹	Total
Jan-93	904	-	361	-	543	-
Jan-94	3,722	-	1,392	-	2,330	-
Jan-95	5,277	-	1,990	-	3,287	-
Jan-96	8,406	-	3,186	-	5,220	-
Apr-96	9,416	-	3,638	-	5,778	-
Jul-96	10,577	-	4,049	-	6,528	-
Oct-96	11,409	-	4,359	-	7,050	-
Jan-97	11,979	-	4,620	-	7,359	-
Apr-97	12,689	-	4,881	-	7,808	-
Jul-97	13,575	-	5,191	-	8,384	-
Oct-97	14,306	-	5,405	-	8,901	-
Jan-98	14,564	-	5,500	-	9,064	-
Apr-98	15,145	-	5,753	-	9,392	-
Jul-98	15,910	-	6,040	-	9,870	-
Oct-98	16,353	-	6,125	-	10,228	-
Jan-99	16,483	-	6,093	-	10,390	-
Apr-99	16,904	-	6,263	-	10,641	-
Jul-99	17,305	-	6,400	-	10,905	-
Oct-99	18,236	19,445	6,742	7,207	11,494	12,238
Jan-00	19,684	21,017	7,227	7,740	12,457	13,277
Apr-00	21,848	23,373	8,120	8,725	13,728	14,648
Jul-00	23,714	25,355	8,932	9,574	14,782	15,781
Oct-00	25,094	26,830	9,329	9,992	15,765	16,838
Jan-01	26,132	27,954	9,689	10,368	16,443	17,586
Apr-01	27,296	29,225	10,112	10,827	17,184	18,398
Jul-01	28,857	30,904	10,587	11,335	18,270	19,569
Oct-01	29,959	32,070	10,897	11,666	19,062	20,404

¹ Cases dealt with by the Northern Ireland tax credit office are excluded from the "GB office" series.

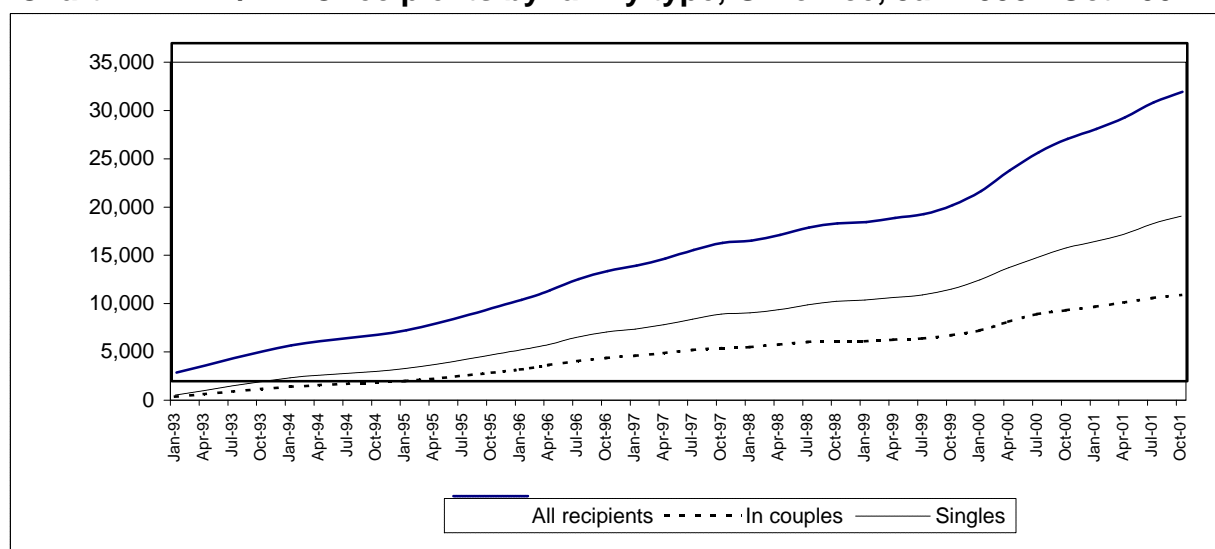
Chart 1 : DWA/DPTC recipients by family type, GB office, Jan 1993 - Oct 2001

Table 1.2 : Average DWA/DPTC award by family type of recipients, January 1993 - October 2001.

United Kingdom, £ per week

	All recipients		In couples		Singles	
	GB office ¹	Total	GB office ¹	Total	GB office ¹	Total
Jan-93	35.37	-	43.59	-	29.91	-
Jan-94	40.71	-	53.03	-	33.36	-
Jan-95	44.79	-	58.93	-	36.23	-
Jan-96	54.35	-	70.25	-	44.65	-
Apr-96	54.72	-	70.84	-	44.57	-
Jul-96	55.97	-	73.10	-	45.35	-
Oct-96	56.92	-	74.22	-	46.23	-
Jan-97	56.69	-	74.06	-	45.78	-
Apr-97	57.39	-	74.89	-	46.44	-
Jul-97	58.46	-	76.47	-	47.30	-
Oct-97	58.37	-	77.22	-	46.92	-
Jan-98	57.52	-	75.83	-	46.41	-
Apr-98	57.84	-	76.08	-	46.67	-
Jul-98	58.63	-	77.10	-	47.33	-
Oct-98	58.97	-	77.98	-	47.58	-
Jan-99	59.05	-	78.89	-	47.41	-
Apr-99	59.53	-	79.38	-	47.84	-
Jul-99	60.13	-	80.31	-	48.29	-
Oct-99	61.73	62.09	81.73	82.16	49.99	50.27
Jan-00	65.78	66.21	85.16	85.87	54.53	54.76
Apr-00	69.53	70.14	88.24	89.17	58.47	58.81
Jul-00	71.31	71.85	90.45	91.37	59.75	60.01
Oct-00	72.98	73.50	93.41	94.26	60.90	61.19
Jan-01	72.65	73.19	92.45	93.29	60.99	61.34
Apr-01	72.35	72.89	91.18	92.06	61.27	61.61
Jul-01	74.20	74.72	92.89	93.72	63.38	63.71
Oct-01	76.33	76.89	94.53	95.39	65.93	66.31

¹ Cases dealt with by the Northern Ireland tax credit office are excluded from the "GB office" series.

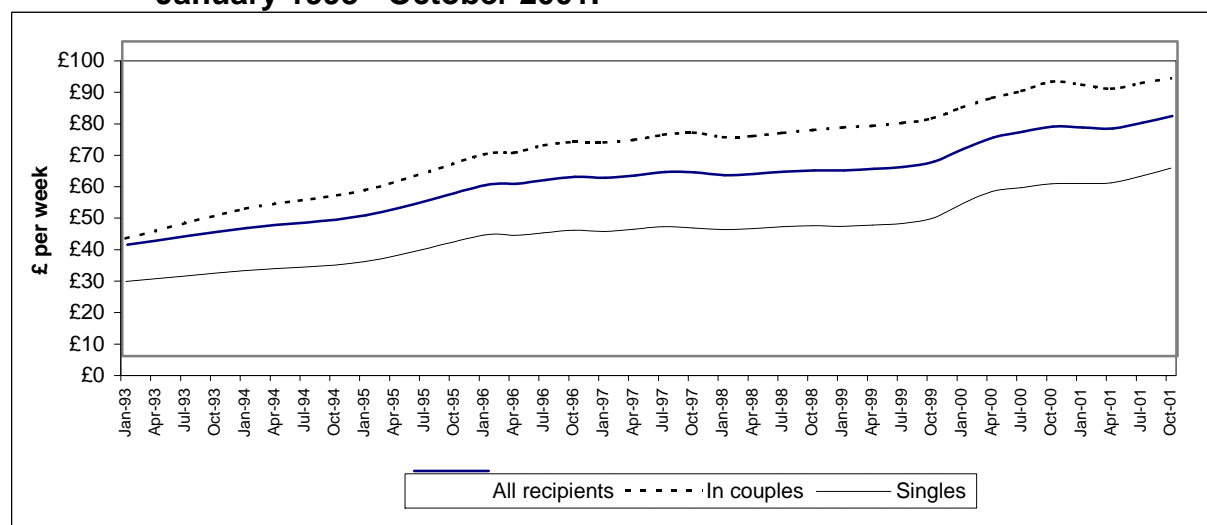
Chart 2 : Average DWA/DPTC award by family type of recipients, GB office, January 1993 - October 2001.

Table 2.1 : Age and gender of recipients, and whether with children.

	<i>United Kingdom</i>				
	All recipients	Male	%	Female	%
All cases	32,070	17,924	56	14,146	44
Under 20	559	344	62	215	38
20 - 29	6,271	3,458	55	2,813	45
30 - 39	10,851	5,712	53	5,139	47
40 - 49	9,011	5,042	56	3,969	44
50 - 59	4,767	2,850	60	1,917	40
60 and over	611	518	85	93	15
With children	14,786	7,687	52	7,099	48
Under 20	16	6	38	10	62
20 - 29	1,453	606	42	847	58
30 - 39	6,731	3,185	47	3,546	53
40 - 49	5,253	2,934	56	2,319	44
50 - 59	1,247	880	71	367	29
60 and over	86	76	88	10	12
Without children	17,284	10,237	59	7,047	41
Under 20	543	338	62	205	38
20 - 29	4,818	2,852	59	1,966	41
30 - 39	4,120	2,527	61	1,593	39
40 - 49	3,758	2,108	56	1,650	44
50 - 59	3,520	1,970	56	1,550	44
60 and over	525	442	84	83	16

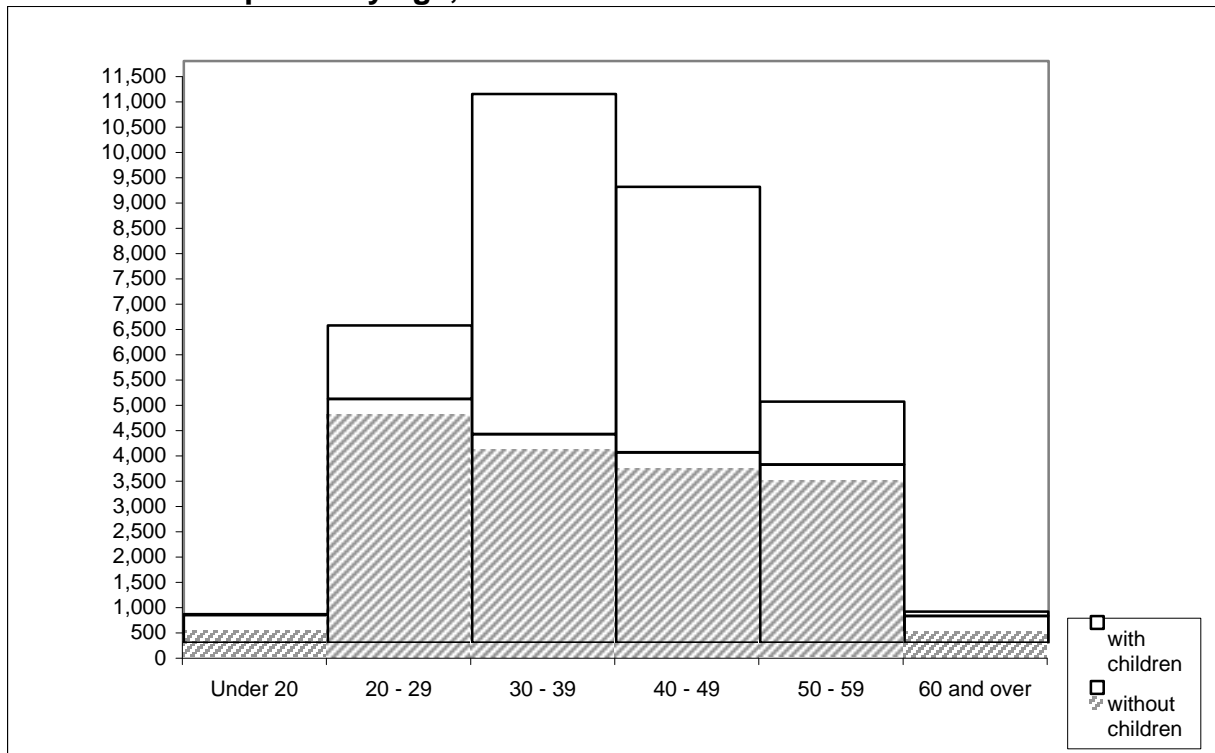
Chart 3 : Recipients by age, and whether with children.

Table 2.2 : Gender and family type of recipients, and average weekly award.

		Average award £ per week
<i>United Kingdom</i>		
	All recipients	
All cases	32,070	76.89
Male - in couples	9,456	98.31
Female - in couples	2,210	82.89
Male -single	8,468	46.32
Female -single	11,936	80.50
With children	14,786	112.97
Male - in couples	7,167	109.42
Female - in couples	1,488	95.29
Male -single	520	108.12
Female -single	5,611	122.64
Without children	17,284	46.02
Male - in couples	2,289	63.53
Female - in couples	722	57.33
Male -single	7,948	42.28
Female -single	6,325	43.11

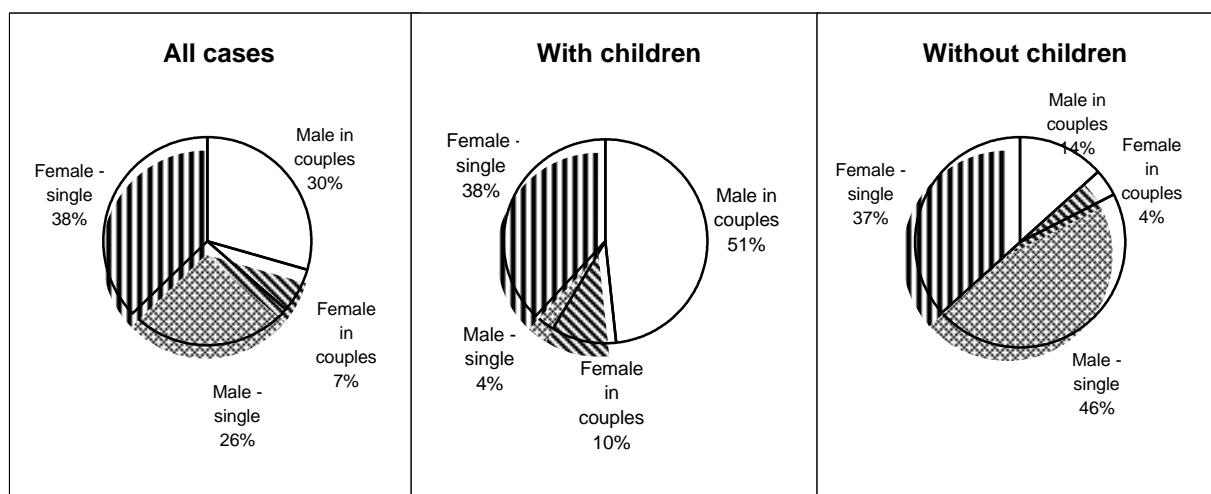
Chart 4 : Family type and gender of recipients.

Table 2.3 : Main qualifying benefit of recipients, by whether with children, and average weekly award.

	<i>United Kingdom</i>	
	Recipients	Average award £ per week
All cases	32,070	76.89
Higher rate Disability living allowance and analogous benefits	13,617	73.18
Lower rate Disability living allowance	6,689	67.13
Severe disablement allowance	2,121	63.26
Disability premium in Income support /Jobseeker's allowance	4,462	98.19
Disability premium in Housing benefit	35	74.44
Disability premium in Council tax benefit	15	87.90
Incapacity benefit (higher rate short term)	1,045	88.65
Incapacity benefit (long term)	4,030	85.93
Fast-Track entrants ¹	56	93.00
With children	14,786	112.97
Higher rate Disability living allowance and analogous benefits	6,324	105.69
Lower rate Disability living allowance	2,523	107.65
Severe disablement allowance	471	120.17
Disability premium in Income support /Jobseeker's allowance	2,655	129.91
Disability premium in Housing benefit	12	120.22
Disability premium in Council tax benefit	5	138.39
Incapacity benefit (higher rate short term)	609	115.71
Incapacity benefit (long term)	2,156	117.10
Fast-Track entrants ¹	31	123.09
Without children	17,284	46.02
Higher rate Disability living allowance and analogous benefits	7,293	44.99
Lower rate Disability living allowance	4,166	42.59
Severe disablement allowance	1,650	47.01
Disability premium in Income support /Jobseeker's allowance	1,807	51.59
Disability premium in Housing benefit	23	50.56
Disability premium in Council tax benefit	10	62.65
Incapacity benefit (higher rate short term)	436	50.86
Incapacity benefit (long term)	1,874	50.06
Fast-Track entrants ¹	25	55.68

¹ Entrants through the Fast-Track must be receiving one of Statutory sick pay, Occupational sick pay, Incapacity benefit (lower rate short term), Income support paid on grounds of incapacity or National insurance credits awarded on the grounds of incapacity for work.

Table 3.1 : Family type and gender of recipients, by weekly amount of award.*United Kingdom*

	All cases	Weekly amount of award						
		Under £20.00	£20.00 - £39.99	£40.00 - £59.99	£60.00 - £79.99	£80.00 - £99.99	£100.00 - £119.99	£120.00 and over
With and without children								
All recipients	32,070	2,232	5,606	6,864	4,891	2,753	3,763	5,961
Male	17,924	1,333	3,406	3,822	2,926	1,745	1,663	3,029
Female	14,146	899	2,200	3,042	1,965	1,008	2,100	2,932
In couples	11,666	607	1,065	1,336	1,547	1,988	1,807	3,316
Male	9,456	423	766	1,012	1,245	1,652	1,493	2,865
Female	2,210	184	299	324	302	336	314	451
Singles	20,404	1,625	4,541	5,528	3,344	765	1,956	2,645
Male	8,468	910	2,640	2,810	1,681	93	170	164
Female	11,936	715	1,901	2,718	1,663	672	1,786	2,481
With children								
All recipients	14,786	356	647	998	1,431	1,879	3,514	5,961
Male	7,687	233	413	630	865	1,040	1,477	3,029
Female	7,099	123	234	368	566	839	2,037	2,932
In couples	8,655	325	544	784	978	1,150	1,558	3,316
Male	7,167	227	398	603	803	964	1,307	2,865
Female	1,488	98	146	181	175	186	251	451
Singles	6,131	31	103	214	453	729	1,956	2,645
Male	520	6	15	27	62	76	170	164
Female	5,611	25	88	187	391	653	1,786	2,481
Without children								
All recipients	17,284	1,876	4,959	5,866	3,460	874	249	-
Male	10,237	1,100	2,993	3,192	2,061	705	186	-
Female	7,047	776	1,966	2,674	1,399	169	63	-
In couples	3,011	282	521	552	569	838	249	-
Male	2,289	196	368	409	442	688	186	-
Female	722	86	153	143	127	150	63	-
Singles	14,273	1,594	4,438	5,314	2,891	36	-	-
Male	7,948	904	2,625	2,783	1,619	17	-	-
Female	6,325	690	1,813	2,531	1,272	19	-	-

Table 3.2 : Family size and type of recipients, by weekly amount of award.*United Kingdom*

	All cases	Weekly amount of award							Average award £ per week
		Under £20.00	£20.00 - £39.99	£40.00 - £59.99	£60.00 - £79.99	£80.00 - £99.99	£100.00 - £119.99	£120.00 and over	
All recipients	32,070	2,232	5,606	6,864	4,891	2,753	3,763	5,961	76.89
No children	17,284	1,876	4,959	5,866	3,460	874	249	-	46.02
One child	5,968	173	354	507	756	1,027	2,362	789	93.89
Two children	5,448	146	221	384	488	636	852	2,721	112.14
Three children	2,357	95		90	165	185	258	1,564	135.91
Four or more children	1,013	14		17	22	31	42	887	176.45
In couples	11,666	607	1,065	1,336	1,547	1,988	1,807	3,316	95.39
No children	3,011	282	521	552	569	838	249	-	62.04
One child	2,583	148	271	337	396	458	702	271	81.62
Two or more children	6,072	177	273	447	582	692	856	3,045	117.78
Singles	20,404	1,625	4,541	5,528	3,344	765	1,956	2,645	66.31
No children	14,273	1,594	4,438	5,314	2,891	36	-	-	42.64
One child	3,385	25	83	170	360	569	1,660	518	103.25
Two or more children	2,746	6	20	44	93	160	296	2,127	143.80

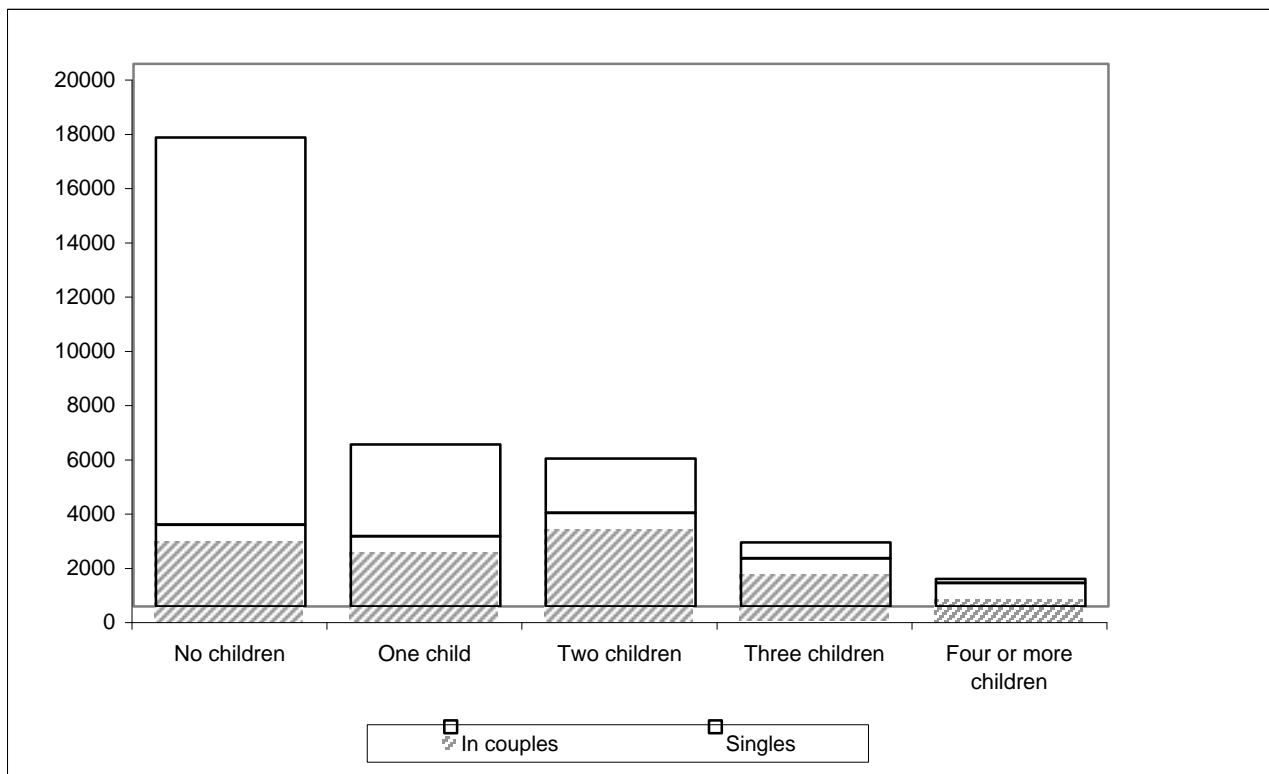
Chart 5 : Recipients by number of children in family, and by family type.

Table 4.1 : Gross weekly earnings of recipients, by family type.*United Kingdom*

	All cases	Gross weekly earnings of recipients						Average gross earnings £ per week
		Under £40.00	£40.00 - £79.99	£80.00 - £119.99	£120.00 - £159.99	£160.00 - £199.99	£200.00 and over	
All recipients	32,070	2,020	6,906	7,471	5,234	4,736	5,703	132.57
In couples	11,666	1,114	2,377	2,073	1,379	1,513	3,210	144.49
Singles	20,404	906	4,529	5,398	3,855	3,223	2,493	125.75
With children	14,786	981	2,945	3,023	1,934	1,799	4,104	148.78
In couples	8,655	715	1,581	1,457	982	1,122	2,798	155.72
Singles	6,131	266	1,364	1,566	952	677	1,306	138.99
Without children	17,284	1,039	3,961	4,448	3,300	2,937	1,599	118.69
In couples	3,011	399	796	616	397	391	412	112.20
Singles	14,273	640	3,165	3,832	2,903	2,546	1,187	120.06

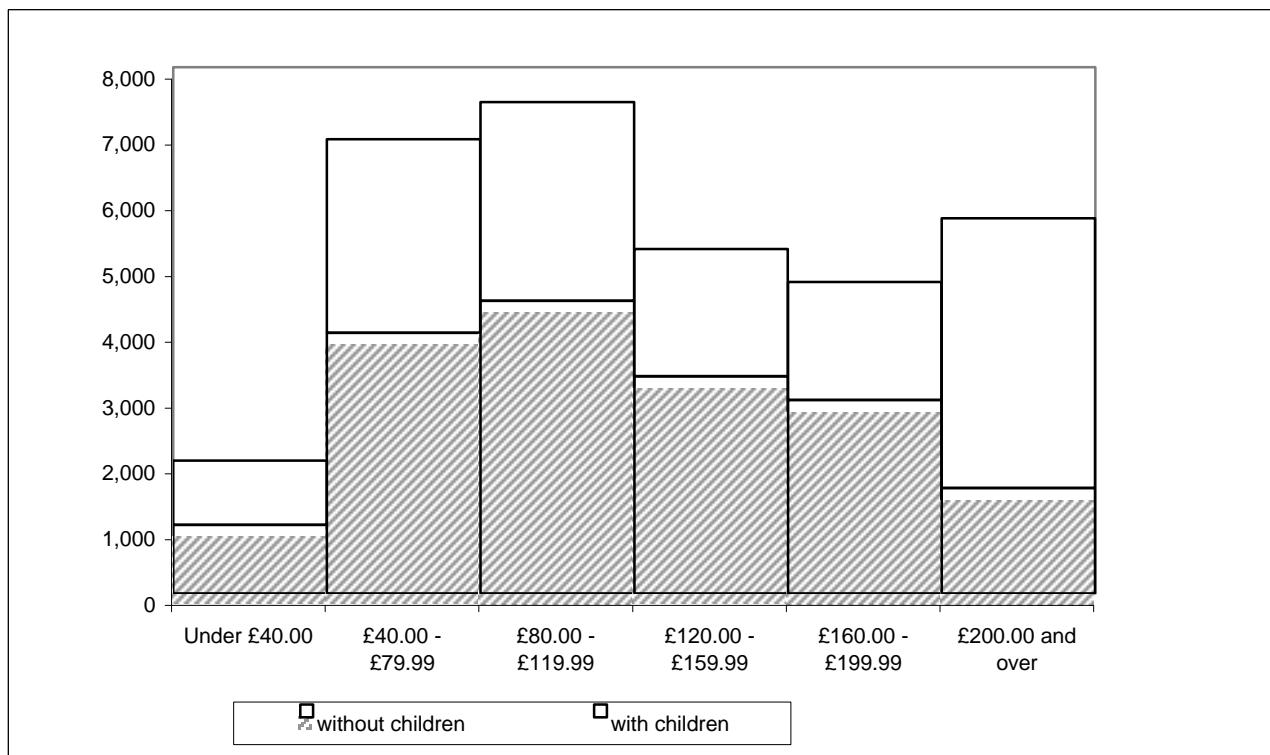
Chart 6 : Recipients by gross weekly earnings, and by whether with children.

Table 4.2 : Recipients whose family incomes include social security benefits which are brought to account, by family type.

United Kingdom

	All recipients	In couples		Singles
		To DPTC recipient	To partner only	
Pensions:				
Retirement pension	289	50	180	59
Bereavement / widow's benefit	151	-	-	151
War pension	48	37		11
Unemployment related benefits:				
Jobseeker's allowance	56	-	56	-
Sickness and disability benefits:				
Incapacity benefit	937	-	937	-
Severe disablement allowance	333	-	333	-
Industrial injuries disablement benefit	706	440	49	217
War disablement pension	156	112	14	30
Carer benefits:				
Invalid care allowance	1,184	50	1,057	77
Others:	28	8		20

Note: Certain benefits are excluded as they are not brought to account when calculating the level of award. Examples are Child benefit, Housing benefit, Council tax benefit and Disability living allowance.

Table 4.3 : Recipients whose families receive other income which is brought to account, by family type.

United Kingdom

	All recipients	In couples	Singles
All cases	1,369	779	590
Benefits in kind	36	17	19
Rent and others	1,327	766	561
With children	664	450	214
Benefits in kind	15	8	7
Rent and others	648	442	206
Without children	705	329	376
Benefits in kind	21	9	12
Rent and others	679	324	355

Section 5 : Regional analysis

This section shows the number of recipients in each country, and in each region of England. The numbers in each local authority and parliamentary constituency appear in "Working Families' and Disabled Person's Tax Credit Statistics: Geographical analyses", although for a different cycle of months; the November 2001 issue is due to be published on 9 April 2002.

For each recipient, the country and region was identified by matching the postcode recorded as part of the correspondence address against the 2001 Version B Postcode Directory supplied by the Office for National Statistics. The regions thereby identified were according to their definitions at the end of December 2000.

Not all recipients have complete and accurate postcodes recorded. Each case is however allocated to a country, if necessary based on the rest of the address. Recipients in England are allocated to a region if the postcode, or the element present, is sufficient to do so with certainty.

Note that the number of recipients in Great Britain is not exactly the same as the number dealt with by the Great Britain tax credit office shown in Section 1.

Table 5.1 Recipients in each Government Office Region, by employment status and family type.

	All recipients			Employees			Self employed ¹		
	All	In couples	Singles	All	In couples	Singles	All	In couples	Singles
United Kingdom	32,070	11,666	20,404	27,572	8,889	18,683	4,498	2,777	1,721
England	24,277	8,997	15,280	20,795	6,843	13,952	3,482	2,154	1,328
North East	2,013	793	1,220	1,734	613	1,121	279	180	99
North West	4,921	1,773	3,148	4,213	1,316	2,897	708	457	251
Yorkshire and the Humber	3,115	1,281	1,834	2,674	1,004	1,670	441	277	164
East Midlands	2,203	932	1,271	1,888	725	1,163	315	207	108
West Midlands	2,922	1,116	1,806	2,542	863	1,679	380	253	127
Eastern	1,893	680	1,213	1,612	513	1,099	281	167	114
London	1,732	486	1,246	1,514	384	1,130	218	102	116
South East	2,644	866	1,778	2,285	656	1,629	359	210	149
South West	2,822	1,068	1,754	2,323	767	1,556	499	301	198
Region unknown	12	2	10	10	2	8	2	-	2
Wales	2,624	1,019	1,605	2,212	788	1,424	412	231	181
Scotland	3,059	881	2,178	2,768	715	2,053	291	166	125
Northern Ireland	2,110	769	1,341	1,797	543	1,254	313	226	87

Table 5.2 Average weekly award for recipients in each Government Office Region, by employment status and family type.

	All recipients			Employees			Self employed ¹		
	All	In couples	Singles	All	In couples	Singles	All	In couples	Singles
United Kingdom	76.89	95.39	66.31	72.02	87.82	64.50	106.76	119.60	86.04
England	76.04	95.04	64.86	71.05	87.71	62.88	105.87	118.33	85.66
North East	75.66	91.21	65.56	71.51	85.32	63.96	101.48	111.27	83.68
North West	80.25	98.56	69.94	75.62	91.05	68.61	107.83	120.18	85.35
Yorkshire and The Humber	78.12	93.35	67.48	73.27	86.14	65.53	107.53	119.47	87.35
East Midlands	78.39	97.58	64.32	73.25	91.45	61.91	109.19	119.03	90.34
West Midlands	75.42	93.55	64.22	70.88	86.68	62.77	105.77	116.98	83.45
Eastern	72.91	92.27	62.06	66.85	82.91	59.35	107.68	121.03	88.12
London	72.39	95.58	63.34	68.65	89.16	61.68	98.34	119.75	79.51
South East	70.70	92.68	59.99	65.40	84.27	57.80	104.45	118.98	83.97
South West	74.84	96.94	61.39	68.28	89.09	58.03	105.38	116.92	87.83
Wales	81.84	94.35	73.90	77.87	88.18	72.16	103.18	115.39	87.61
Scotland	73.95	89.61	67.62	70.67	83.17	66.31	105.19	117.33	89.07
Northern Ireland	84.73	107.49	71.68	78.10	94.93	70.81	122.80	137.67	84.17

1. Recipient has self employment income source and no source of income as an employee

Table 6.1 : Main qualifying benefit of recipients of awards starting between October 1999 and October 2001, by type of award.

	<i>United Kingdom</i>	
	All cases	Average award £ per week
All awards		
All qualifying benefits	118,425	73.54
Disability living allowance - higher rate & analogous benefits	50,514	70.09
Disability living allowance - lower rate	24,694	64.30
Severe disablement benefit	8,193	60.85
Disability premium in IS/JSA	16,048	93.35
Incapacity benefit (higher rate short term)	3,889	84.57
Incapacity benefit (long term)	14,762	83.23
Other ¹	325	80.25
New awards ²		
All qualifying benefits	29,581	72.94
Disability living allowance - higher rate & analogous benefits	11,114	66.57
Disability living allowance - lower rate	5,727	65.68
Severe disablement benefit	2,068	61.97
Disability premium in IS/JSA	4,867	93.66
Incapacity benefit (higher rate short term)	1,311	81.61
Incapacity benefit (long term)	4,413	78.09
Other ¹	81	75.24
Renewal awards ³		
All qualifying benefits	81,675	74.22
Disability living allowance - higher rate & analogous benefits	35,709	71.54
Disability living allowance - lower rate	17,254	64.16
Severe disablement benefit	5,781	60.51
Disability premium in IS/JSA	10,519	93.64
Incapacity benefit (higher rate short term)	2,436	86.42
Incapacity benefit (long term)	9,762	85.78
Other ¹	214	82.66
Repeat awards ⁴		
All qualifying benefits	7,169	68.18
Disability living allowance - higher rate & analogous benefits	3,691	66.66
Disability living allowance - lower rate	1,713	61.15
Severe disablement benefit	344	59.88
Disability premium in IS/JSA	662	86.30
Incapacity benefit (higher rate short term)	142	80.20
Incapacity benefit (long term)	587	79.41
Other ¹	30	76.56

¹Disability premium in Housing benefit or Council tax benefit, plus Fast-Track entrants.

²New awards are those where the recipient has not received DWA or DPTC within the previous 2 years.

³Renewal awards are those following on immediately from a previous award, without a break.

⁴Repeat awards are those where the recipient had a previous award but there has been a break between awards of up to 2 years.

Table 6.2 : Recipients of awards starting between October 1999 and October 2001 by type of award and family type.

<i>United Kingdom</i>					
	All Cases	In couples		Singles	
		Male	Female	Male	Female
All awards	118,425	36,083	7,974	31,510	42,858
New awards ¹	29,581	8,548	2,491	7,327	11,215
Renewal awards ²	81,675	25,590	4,940	22,001	29,144
Repeat awards ³	7,169	1,945	543	2,182	2,499

¹New awards are those where the recipient has not received DWA or DPTC within the previous 2 years.

²Renewal awards are those following on immediately from a previous award, without a break.

³Repeat awards are those where the recipient had a previous award but there has been a break between awards of up to 2 years.

Figures for DWA awards in Great Britain starting between November 1992 and September 1999 appear in the enquiry statistics for October 1999.

Table 6.3 : Disallowances between October 1999 and October 2001 by reason of disallowance.*United Kingdom*

	Number of disallowances
All disallowances	21,822
All A codes	103
A1 Claimant was not in UK	95
A2 Claimant was not normally living in UK	-
A3 Partner not normally living in UK	-
A4	-
All C codes	234
C1 Claimant's capital exceeds £16,000	182
C2 Claimant and partner's capital exceeds £16,000	36
C3 Failure to provide information about value of claimant and partner's capital	-
C4 Failure to provide information about value of claimant's capital	12
All D codes	4,821
D1 Claimant not doing paid work for an average of 16 hours a week or more	1,555
D2 Claimant not in paid work	1,572
D5 Claimant not engaged in remunerative work in relevant weeks	1,367
D7 Claimant not normally engaged in paid work	297
D9 Claimant not treated as in paid work - voluntary	-
D11 Claimant not treated as in paid work - charity	-
D13 Claimant working for voluntary body - expenses	-
D15 Claimant could not be treated as in paid work on the information available	28
All E codes	4,703
E1 Claimant's income higher than the level at which DPTC would become payable	4,225
E2 Claimant's entitlement less than the minimum amount of DPTC	106
E3 On the information available the claimant or partner's income was higher then the level at which DPTC would become payable	372
All other codes	
G1 Any disallowance not covered by other categories	379
I DPTC claim made more than 6 weeks before DPTC end date	3,189
J1 Qualifying benefit test not satisfied	5,452
K1 Disability test not satisfied	1,318
L Lapsed claim	32
W Claimant has withdrawn claim	1,555

Figures for DWA disallowances in Great Britain occurring between November 1992 and September 1999 appear in the enquiry statistics for October 1999.

Table 6.4 : Recipients of renewal and repeat awards starting between October 1999 and October 2001 by disability type and age.

United Kingdom

	All ages	Under 30	30 - 39	40 - 49	50 - 59	60 and over
Renewal awards ¹						
Mental disabilities - treatment	6,490	778	2,514	2,188	954	56
Mental disabilities - day to day things	7,530	2,157	2,549	1,837	894	93
Mental disabilities - getting on with people	6,395	1,366	2,439	1,791	752	47
Fits and comas	637	134	280	151	66	6
Exhaustion and pain	23,493	2,332	7,535	7,897	4,976	753
Seeing	2,440	476	912	651	343	58
Hearing	1,393	262	515	351	229	36
Communicating	2,404	670	818	546	320	50
Getting around	3,138	290	934	1,086	688	140
Using your hands	3,739	712	1,269	1,096	586	76
Reaching with your arms	591	79	182	170	147	13
Repeat awards ²						
Mental disabilities - treatment	592	80	231	198	83	-
Mental disabilities - day to day things	632	198	226	138	65	5
Mental disabilities - getting on with people	581	141	230	150	60	-
Fits and comas	50	21	20	9	-	-
Exhaustion and pain	1,629	242	521	543	298	25
Seeing	255	73	96	68	18	-
Hearing	141	28	60	33	14	6
Communicating	232	76	89	40	22	5
Getting around	218	40	64	61	53	-
Using your hands	375	114	124	88	49	-
Reaching with your arms	68	17	15	20	16	-

¹Renewal awards are those following on immediately from a previous award, without a break.

²Repeat awards are those where the recipient had a previous award but there has been a break between awards of up to 2 years.

Figures for DWA awards in Great Britain starting between November 1992 and September 1999 appear in the enquiry statistics for October 1999.

Claimants may have one or more type(s) of disability. This table records all declared and confirmed disability types for those claimants who complete form DPTC2 prior to renewal/ repeat awards.

£5.00