



INLAND REVENUE
Analysis and Research

Disabled Person's Tax Credit Statistics

Quarterly Enquiry

United Kingdom October 2000



A National Statistics Publication
© Crown Copyright 2000

Contact point for enquiries and requests for further copies:-

Analysis and Research (TCASP)
Inland Revenue
Room 39A - New Wing
Somerset House
London
WC2R 1LB
☎ : 020 - 7438 6275
Fax : 020 - 7438 4329
E-mail : ar_tcasp.ir.sh@gtnet.gov.uk

This, and issues back to October 1999 can be found on the Inland Revenue web site : www.inlandrevenue.gov.uk / statistics

The January 2001 issue is due to be published on the web site on Tuesday 12th June 2001.

A NATIONAL STATISTICS PUBLICATION

National Statistics are produced to high professional standards set out in the National Statistics Code of Practice. They undergo regular quality assurance reviews to ensure that they meet customer needs. They are produced free from any political interference.

For general enquiries about National Statistics, contact the National Statistics Public Enquiry Service on

☎ : 020 - 7533 5888
minicom : 01633 812399
E-mail : info@statistics.gov.uk
Fax : 01633 652747
Letters : room DG/18, 1 Drummond Gate, LONDON, SW1V 2QQ

You can also find National Statistics on the internet - go to www.statistics.gov.uk

Disabled Person's Tax Credit Statistics

Quarterly Enquiry

United Kingdom

October 2000

Contents	PAGE
Introduction	1
Main findings	1
List of tables	2
Section 1 : Time series	4
Section 2 : Family type	7
Section 3 : Amount of award	10
Section 4 : Earnings and other income	12
Section 5 : Geographical analysis	14
Section 6 : Historical DPTC	28

Introduction

Disabled Person's Tax Credit (DPTC) replaced Disability Working Allowance (DWA) from 5th October 1999. It is a tax credit available to people who are working at least sixteen hours a week and who have an illness or disability which puts them at a disadvantage in getting a job.

The tables cover awards current at 31st October 2000. No DWA awards have been current since the end of March 2000. Time series covering both DPTC and DWA are available only for awards made in Great Britain (excluding Northern Ireland).

The figures are based on a 100% scan of awards. They have been compiled four months after the reference date, by which time almost all awards current at the reference date have been processed and entered onto the computer system. The tables cover awards made in the United Kingdom, unless otherwise stated. To ensure that information about individuals is not disclosed, most cells containing less than five cases are shown as '-', and some other cells are bracketed together.

Problems have been discovered with the classification of recipients between employees and self-employed. The publication of figures using this classification has therefore been suspended.

Main Findings

There were 26,790 DPTC awards current at 31st October 2000, 6 per cent higher than 31st July 2000.

16,813 awards were to single adults (including lone parents), with an average value of £61.17 per week. 9,977 were to couples with an average value of £94.20 a week.

The average DPTC award was £73.47 per week.

45 per cent of recipients had children. Their average weekly award was £109.89, compared with £43.54 for recipients with no children.

In 42 per cent of the cases higher rate Disability living allowance, or an analogous benefit, was the main qualifying benefit for DPTC. Lower rate Disability living allowance was the main qualifying benefit for a further 21 per cent.

For families with children, 64% of DPTC awards were over £100 per week.

The average gross weekly earnings of the main earner was £123.19.

List of Tables

Section 1 : Time series

Table 1.1	DWA/DPTC awards by family type, January 1993 - October 2000.
Chart 1	DWA/DPTC awards by family type, Great Britain, January 1993 - October 2000.
Table 1.2	Average DWA/DPTC award by family type, January 1993 October 2000.
Chart 2	Average DWA/DPTC award by family type, Great Britain, January 1993 - October 2000.

Section 2 : Family type

Table 2.1	Family type and age by sex of recipient.
Chart 3	Age of recipient and family type.
Table 2.2	Family type, number and average weekly amount of award.
Chart 4	Family type.
Table 2.3	Family type and main qualifying benefit, number and average weekly amount of award.

Section 3 : Amount of award

Table 3.1	Family type by weekly amount of award.
Table 3.2	Family size and type by weekly amount of award.
Chart 5	Number of children by family type.

Section 4 : Earnings and other income

Table 4.1	Family type by gross weekly earnings of main earner.
Chart 6	Gross weekly earnings of main earner and family type
Table 4.2	Other benefits in receipt at the time of application by family type.
Table 4.3	Other income in receipt at the time of application by family type.

Section 5 : Geographical analysis

Table 5.1	Number of awards by Government Office Region and family type.
Table 5.2	Average award by Government Office Region and family type.
Table 5.3	Number of awards by local authority.
Table 5.4	Number of awards by parliamentary constituency.

Section 6 : Historical DPTC

Table 6.1	Type and main qualifying benefit of all awards starting between October 1999 and October 2000.
Table 6.2 :	Awards starting between October 1999 and October 2000 by type of award and family type.
Table 6.3 :	Disallowances between October 1999 and October 2000 by reason of disallowance.
Table 6.4 :	Renewal and repeat awards starting between October 1999 and October 2000 by disability type and age of claimant.

Section 1 : Time series

This section shows the number of awards in Great Britain, and their average weekly value, for each quarter back to January 1993. Figures for the United Kingdom are shown from October 1999.

The figures for July 2000 are slightly different to those published last time, as they take account of awards made after the scan for the previous publication and then backdated.

Table 1.1 : DWA/DPTC awards by family type, January 1993 - October 2000.

	All cases		Couples		Singles	
	Great Britain	United Kingdom	Great Britain	United Kingdom	Great Britain	United Kingdom
Jan-93	904	-	361	-	543	-
Jan-94	3,722	-	1,392	-	2,330	-
Jan-95	5,277	-	1,990	-	3,287	-
Apr-95	5,782	-	2,152	-	3,630	-
Jul-95	6,615	-	2,465	-	4,150	-
Oct-95	7,719	-	2,899	-	4,820	-
Jan-96	8,406	-	3,186	-	5,220	-
Apr-96	9,416	-	3,638	-	5,778	-
Jul-96	10,577	-	4,049	-	6,528	-
Oct-96	11,409	-	4,359	-	7,050	-
Jan-97	11,979	-	4,620	-	7,359	-
Apr-97	12,689	-	4,881	-	7,808	-
Jul-97	13,575	-	5,191	-	8,384	-
Oct-97	14,306	-	5,405	-	8,901	-
Jan-98	14,564	-	5,500	-	9,064	-
Apr-98	15,145	-	5,753	-	9,392	-
Jul-98	15,910	-	6,040	-	9,870	-
Oct-98	16,353	-	6,125	-	10,228	-
Jan-99	16,483	-	6,093	-	10,390	-
Apr-99	16,904	-	6,263	-	10,641	-
Jul-99	17,305	-	6,400	-	10,905	-
Oct-99	18,222	19,445	6,738	7,207	11,484	12,238
Jan-00	19,678	21,017	7,232	7,740	12,446	13,277
Apr-00	21,853	23,373	8,132	8,725	13,721	14,648
Jul-00	23,732	25,355	8,955	9,574	14,777	15,781
Oct-00	25,142	26,790	9,347	9,977	15,795	16,813

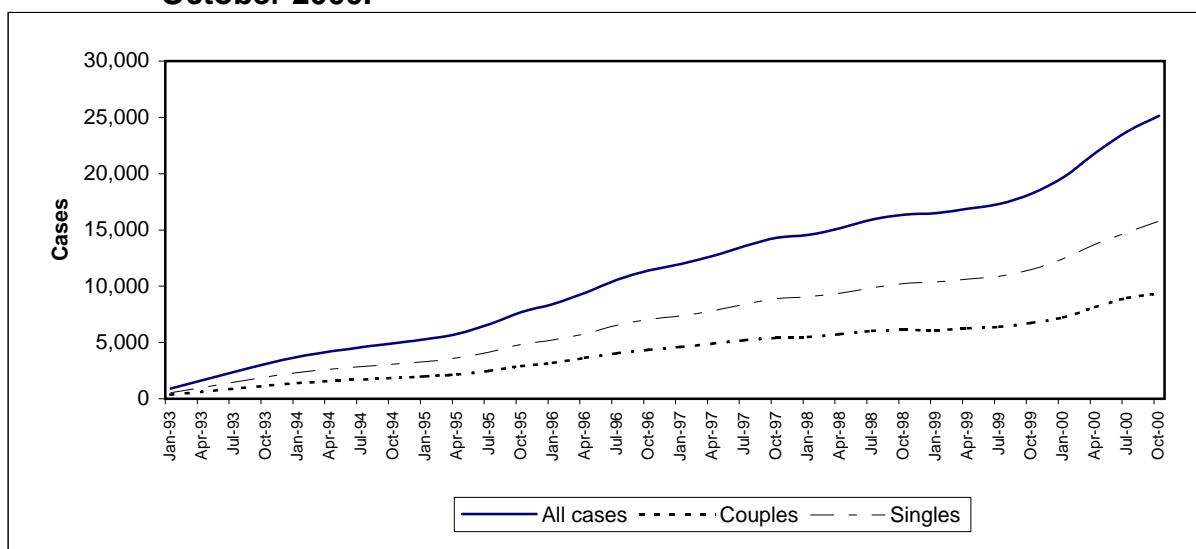
Chart 1 : DWA/DPTC awards by family type, Great Britain, January 1993 - October 2000.

Table 1.2 : Average DWA/DPTC award by family type, January 1993 - October 2000.

	<i>£ per week</i>					
	All cases		Couples		Singles	
	Great Britain	United Kingdom	Great Britain	United Kingdom	Great Britain	United Kingdom
Jan-93	35.37	-	43.59	-	29.91	-
Jan-94	40.71	-	53.03	-	33.36	-
Jan-95	44.79	-	58.93	-	36.23	-
Apr-95	45.46	-	59.43	-	37.17	-
Jul-95	49.65	-	64.32	-	40.94	-
Oct-95	53.87	-	69.90	-	44.22	-
Jan-96	54.35	-	70.25	-	44.65	-
Apr-96	54.72	-	70.84	-	44.57	-
Jul-96	55.97	-	73.10	-	45.35	-
Oct-96	56.92	-	74.22	-	46.23	-
Jan-97	56.69	-	74.06	-	45.78	-
Apr-97	57.39	-	74.89	-	46.44	-
Jul-97	58.46	-	76.47	-	47.30	-
Oct-97	58.37	-	77.22	-	46.92	-
Jan-98	57.52	-	75.83	-	46.41	-
Apr-98	57.84	-	76.08	-	46.67	-
Jul-98	58.63	-	77.10	-	47.33	-
Oct-98	58.97	-	77.98	-	47.58	-
Jan-99	59.05	-	78.89	-	47.41	-
Apr-99	59.53	-	79.38	-	47.84	-
Jul-99	60.13	-	80.31	-	48.29	-
Oct-99	61.66	62.09	81.64	82.16	49.94	50.27
Jan-00	65.69	66.21	85.05	85.87	54.43	54.76
Apr-00	69.56	70.14	88.29	89.17	58.46	58.81
Jul-00	71.37	71.85	90.57	91.37	59.73	60.01
Oct-00	72.94	73.47	93.36	94.20	60.85	61.17

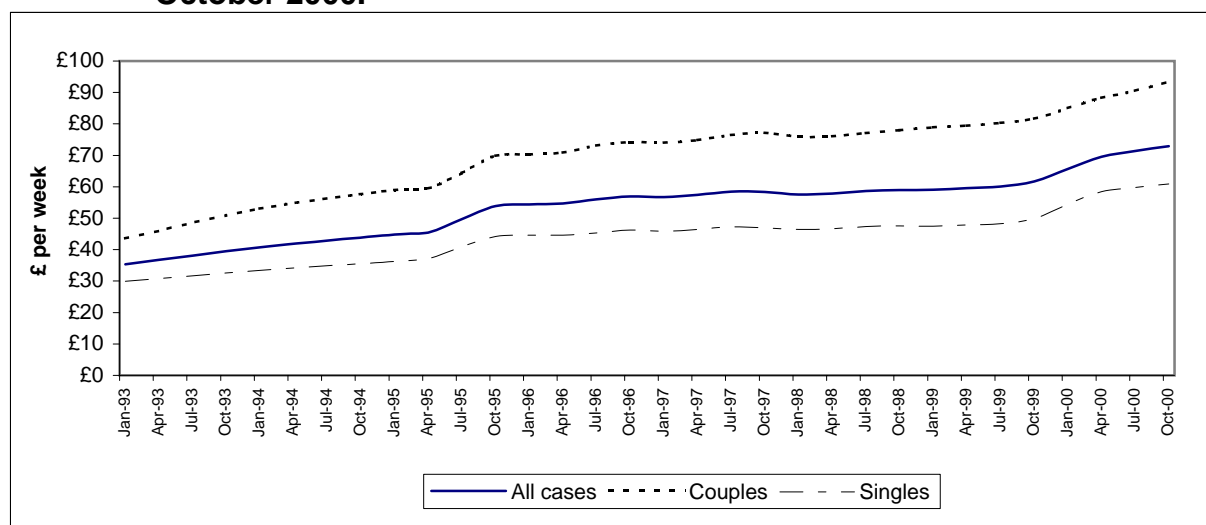
Chart 2 : Average DWA/DPTC award by family type, Great Britain, January 1993 - October 2000.

Table 2.1 : Family type and age by sex of recipient.

	<i>United Kingdom</i>				
	All cases	Male	%	Female	%
All cases	26,790	15,403	57	11,387	43
Under 20	471	273	58	198	42
20 - 29	5,689	3,132	55	2,557	45
30 - 39	8,926	4,946	55	3,980	45
40 - 49	7,349	4,245	58	3,104	42
50 - 59	3,863	2,375	61	1,488	39
60 and over	492	432	88	60	12
With children	12085	6646	55	5439	45
Under 20	19	5	26	14	74
20 - 29	1,268	558	44	710	56
30 - 39	5,538	2,850	51	2,688	49
40 - 49	4,215	2,469	59	1,746	41
50 - 59	978	705	72	273	28
60 and over	67	59	88	8	12
Without children	14,705	8,757	60	5,948	40
Under 20	452	268	59	184	41
20 - 29	4,421	2,574	58	1,847	42
30 - 39	3,388	2,096	62	1,292	38
40 - 49	3,134	1,776	57	1,358	43
50 - 59	2,885	1,670	58	1,215	42
60 and over	425	373	88	52	12

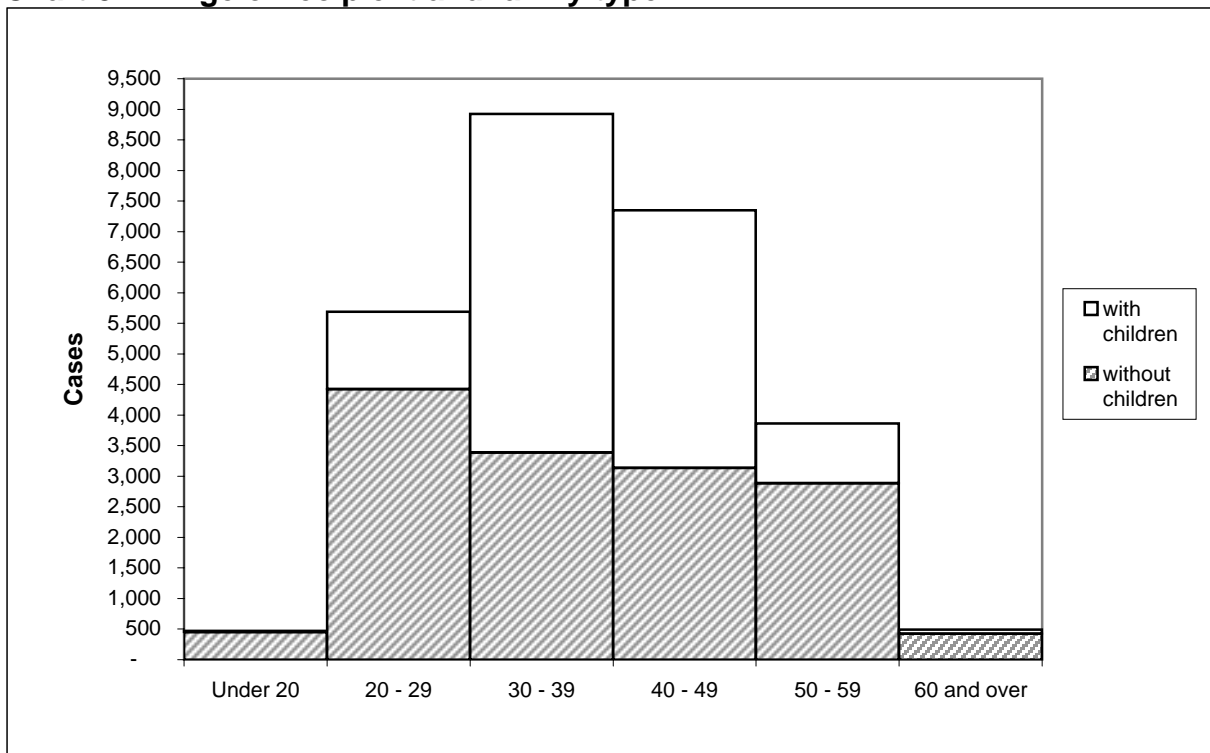
Chart 3 : Age of recipient and family type.

Table 2.2 : Family type, number and average weekly amount of award.

<i>United Kingdom</i>		
	All cases	Average award £ per week
All cases	26,790	73.47
Couple - male	8,229	97.18
Couple - female	1,748	80.14
Single - male	7,174	43.44
Single - female	9,639	74.35
With children	12,085	109.89
Couple - male	6,220	108.61
Couple - female	1,161	93.12
Single - male	426	103.58
Single - female	4,278	116.92
Without children	14,705	43.54
Couple - male	2,009	61.79
Couple - female	587	54.47
Single - male	6,748	39.65
Single - female	5,361	40.39

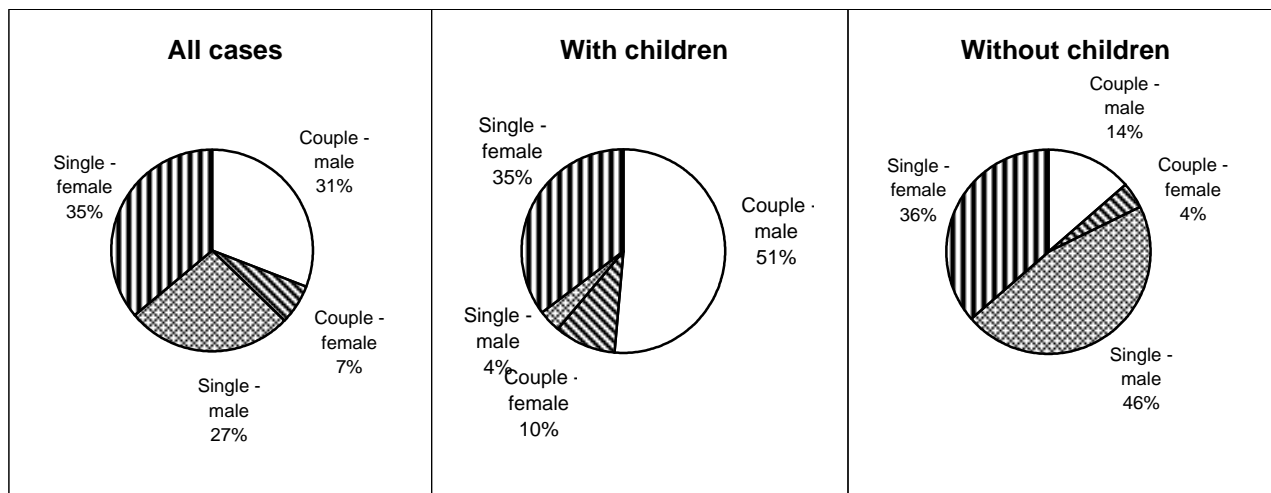
Chart 4 : Family type.

Table 2.3 : Family type and main qualifying benefit, number and average weekly amount of award.

	<i>United Kingdom</i>	
	All cases	Average award £ per week
All cases	26,790	73.47
Higher rate Disability living allowance and analogous benefits	11,288	70.14
Lower rate Disability living allowance	5,573	64.38
Severe disablement benefit	1,911	61.05
Disability premium in Income support /Jobseeker's allowance	3,695	92.09
Disability premium in Housing benefit	38	78.30
Disability premium in Council tax benefit	17	78.24
Incapacity benefit (higher rate short term)	888	84.69
Incapacity benefit (long term)	3,373	83.15
Fast track applicants (1)	7	42.42
With children	12,085	109.89
Higher rate Disability living allowance and analogous benefits	5,179	102.77
Lower rate Disability living allowance	2,065	105.48
Severe disablement benefit	442	117.65
Disability premium in Income support /Jobseeker's allowance	2,082	125.67
Incapacity benefit (higher rate short term)	620	111.20
Incapacity benefit (long term)	1,672	114.82
Other cases (1)	25	112.18
Without children	14,705	43.54
Higher rate Disability living allowance and analogous benefits	6,109	42.48
Lower rate Disability living allowance	3,508	40.18
Severe disablement benefit	1,469	44.02
Disability premium in Income support /Jobseeker's allowance	1,613	48.74
Incapacity benefit (higher rate short term)	374	48.25
Incapacity benefit (long term)	1,595	46.49
Other cases (1)	37	48.59

(1) Entrants through the fast track are not required to be receiving, or to have received, a benefit to qualify for an award. They are however included here for completeness.

Table 3.1 : Family type by weekly amount of award.*United Kingdom*

	All cases	Weekly amount of award						
		Under £20.00	£20.00 - £39.99	£40.00 - £59.99	£60.00 - £79.99	£80.00 - £99.99	£100.00 - £119.99	£120.00 and over
All cases								
All cases	26,790	1,852	5,171	7,211	2,290	2,562	2,951	4,753
Male	15,403	1,113	3,098	3,994	1,505	1,679	1,375	2,639
Female	11,387	739	2,073	3,217	785	883	1,576	2,114
Couples	9,977	460	883	1,107	1,335	1,907	1,424	2,861
Male	8,229	323	640	837	1,067	1,623	1,225	2,514
Female	1,748	137	243	270	268	284	199	347
Singles	16,813	1,392	4,288	6,104	955	655	1,527	1,892
Male	7,174	790	2,458	3,157	438	56	150	125
Female	9,639	602	1,830	2,947	517	599	1,377	1,767
With children								
All cases	12,085	245	498	790	1,190	1,658	2,951	4,753
Male	6,646	161	332	513	704	922	1,375	2,639
Female	5,439	84	166	277	486	736	1,576	2,114
Couples	7,381	221	432	634	1,809		1,424	2,861
Male	6,220	154	315	493	1,519		1,225	2,514
Female	1,161	67	117	141	290		199	347
Singles	4,704	24	66	156	1,039		1,527	1,892
Male	426	7	17	20	107		150	125
Female	4,278	17	49	136	932		1,377	1,767
Without children								
All cases	14,705	1,607	4,673	6,421	1,100	904	-	-
Male	8,757	952	2,766	3,481	801	757	-	-
Female	5,948	655	1,907	2,940	299	147	-	-
Couples	2,596	239	451	473	1,433		-	-
Male	2,009	169	325	344	1,171		-	-
Female	587	70	126	129	262		-	-
Singles	12,109	1,368	4,222	5,948	571		-	-
Male	6,748	783	2,441	3,137	387		-	-
Female	5,361	585	1,781	2,811	184		-	-

Table 3.2 : Family size and type by weekly amount of award.

United Kingdom

	All cases	Weekly amount of award							Average award £ per week
		Under £20.00	£20.00 - £39.99	£40.00 - £59.99	£60.00 - £79.99	£80.00 - £99.99	£100.00 - £119.99	£120.00 and over	
All cases	26,790	1,852	5,171	7,211	2,290	2,562	2,951	4,753	73.47
No children	14,705	1,607	4,673	6,421	1,100	904	-	-	43.54
One child	4,792	140	277	402	677	935	1,891	470	89.98
Two children	4,426	87	179	298	392	548	749	2,173	108.68
Three children	1,946	18	36	76	100	150	250	1,316	132.91
Four or more children	921	-	6	14	21	25	61	794	170.66
Couples	9,977	460	883	1,107	1,335	1,907	1,424	2,861	94.20
No children	2,596	239	451	473	1,433	-	-	-	60.14
One child	2,188	119	220	278	781	627	163	-	79.42
Two or more children	5,193	102	212	356	1,028	797	2,698	-	117.45
Singles	16,813	1,392	4,288	6,104	955	655	1,527	1,892	61.17
No children	12,109	5,590	5,948	571	-	-	-	-	39.98
One child	2,604	78	124	831	1,264	307	-	-	98.84
Two or more children	2,100	12	32	208	263	1,585	-	-	136.62

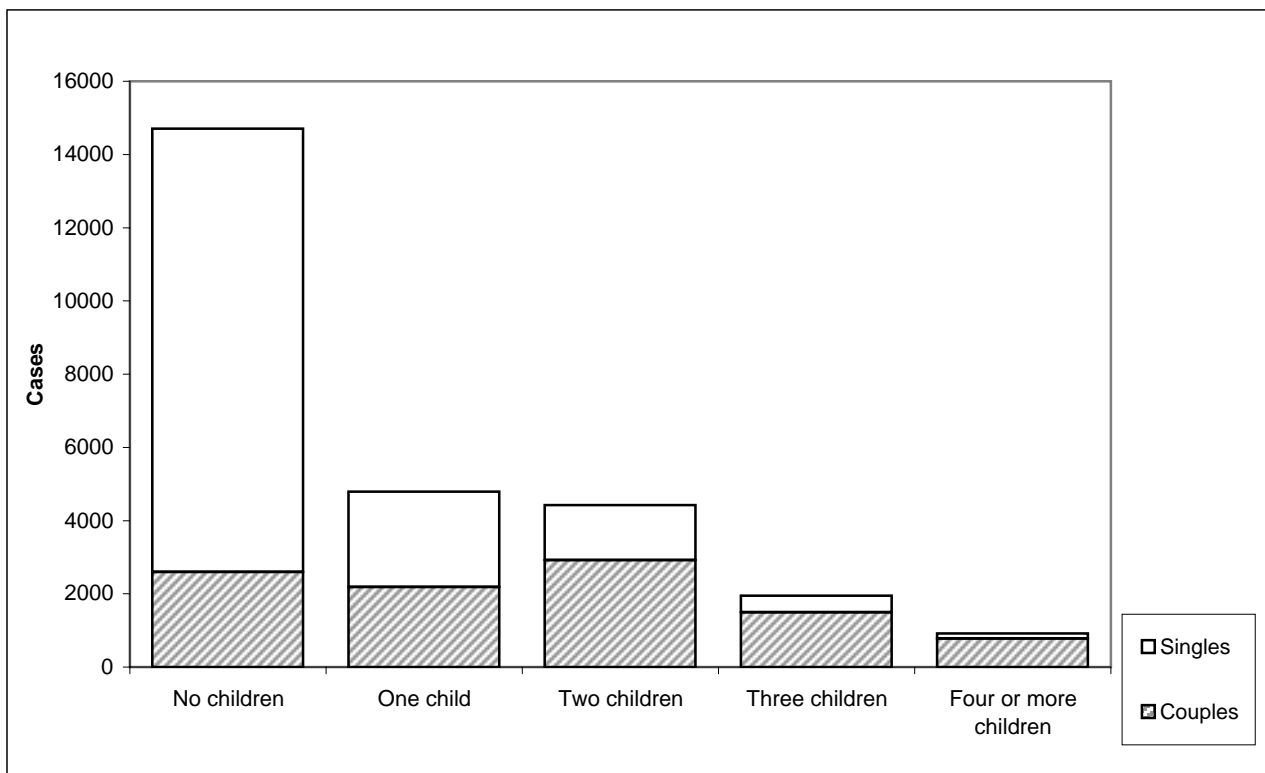
Chart 5 : Number of children by family type.

Table 4.1 : Family type by gross weekly earnings of main earner.*United Kingdom*

	All cases	Gross weekly earnings of main earner						Average gross earnings £ per week
		Under £40.00	£40.00 - £79.99	£80.00 - £119.99	£120.00 - £159.99	£160.00 - £199.99	£200.00 and over	
All cases	26,790	1,885	6,742	6,197	4,425	3,814	3,727	123.19
Couples	9,977	1,052	2,360	1,724	1,242	1,369	2,230	132.86
Singles	16,813	833	4,382	4,473	3,183	2,445	1,497	117.44
With children	12,085	885	2,820	2,370	1,605	1,544	2,861	138.59
Couples	7,381	663	1,616	1,194	904	1,021	1,983	143.07
Singles	4,704	222	1,204	1,176	701	523	878	131.55
Without children	14,705	1,000	3,922	3,827	2,820	2,270	866	110.53
Couples	2,596	389	744	530	338	348	247	103.83
Singles	12,109	611	3,178	3,297	2,482	1,922	619	111.97

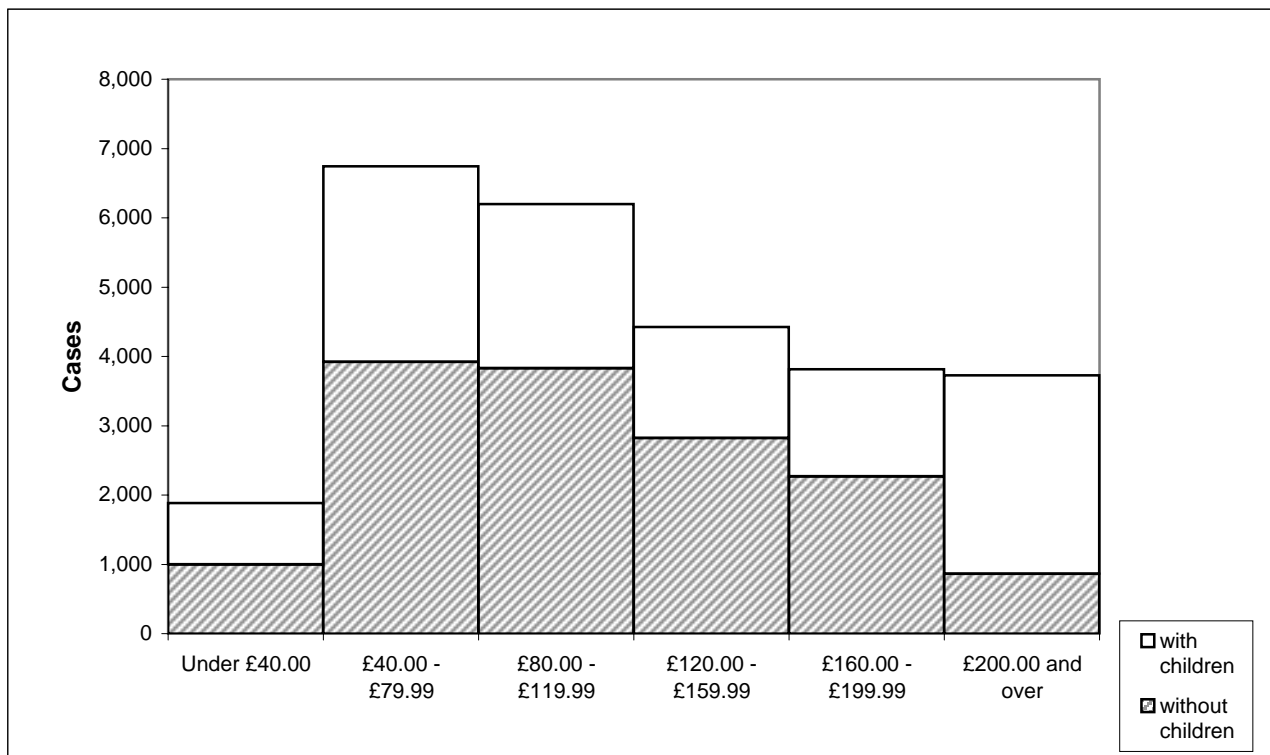
Chart 6 : Gross weekly earnings of main earner and family type

Table 4.2 : Other benefits in receipt at the time of application by family type.

<i>United Kingdom</i>			
	All cases	Couples	Singles
Total (one or more types)	2,972	2,572	400
Pensions:			
Retirement pension	212	180	32
Widow's benefit	109	-	109
War pensions, War disablement pension and War widows pension	183	147	36
Unemployment related benefits:			
Jobseeker's allowance	43	-	-
Sickness and disability benefits:			
Incapacity benefit, Statutory sick pay and Severe disablement benefit	1,005	986	19
Industrial injuries disablement benefit and Disability living allowance	566	412	154
Carer benefits:			
Invalid care allowance	1,006	954	52
Others:	6	-	-

Table 4.3 : Other income in receipt at the time of application by family type.

<i>United Kingdom</i>			
	All cases	Couples	Singles
All cases	1,117	649	468
Benefits in kind	39	17	22
Rent and others	1,072	634	438
With children	545	} 376	169
Benefits in kind	17		
Rent and others	527		
Without children	572	} 273	299
Benefits in kind	22		
Rent and others	545		

Section 5 : Geographical analysis

This section shows the number of awards in United Kingdom, and their average weekly value, for each Government Office Region.

The number of awards by local authority and parliamentary constituency are also included in this section.

All Geographical classifications, such as Government Office Region, local authority and parliamentary constituency are derived from the postcode recorded for the applicant, using the 2000 Version 1 Postcode Directory supplied by the Office for National Statistics. This allocates postcodes to local authorities and constituencies according to their definition as at the end of January 2000.

Not all recorded postcodes are complete and accurate. Cases are allocated on the basis of incomplete postcodes if the element present is sufficient to identify the area with certainty.

Table 5.1 : Number of awards by Government Office Region and family type.

	All cases	Couples	Singles
United Kingdom	26,790	9,977	16,813
Great Britain	25,142	9,347	15,795
North East	1,580	662	918
North West	4,135	1,521	2,614
Yorkshire and The Humber	2,619	1,083	1,536
East Midlands	1,855	806	1,049
West Midlands	2,543	982	1,561
East of England	1,559	559	1,000
London	1,412	399	1,013
South East	2,263	745	1,518
South West	2,431	945	1,486
Wales	2,213	903	1,310
Scotland	2,532	742	1,790
Northern Ireland	1,648	630	1,018

Table 5.2 : Average award by Government Office Region and family type.

	All cases	Couples	Singles
	<i>£ per week</i>		
United Kingdom	73.47	94.20	61.17
Great Britain	72.94	93.36	60.85
North East	74.31	92.96	60.86
North West	76.58	95.58	65.53
Yorkshire and The Humber	74.37	92.86	61.34
East Midlands	75.20	95.12	59.90
West Midlands	72.18	91.12	60.26
East of England	70.27	93.58	57.23
London	67.44	94.18	56.91
South East	68.25	95.52	54.86
South West	69.52	92.39	54.98
Wales	77.93	94.99	66.17
Scotland	71.58	87.42	65.01
Northern Ireland	81.54	106.64	66.00

Table 5.3 : Number of awards by local authority.

Local authority	All cases	Local authority	All cases
UNITED KINGDOM	26,790	Cumbria	259
GREAT BRITAIN	25,142	Allerdale	37
ENGLAND	20,397	Barrow-in-Furness	62
NORTH EAST	1,580	Carlisle	52
Darlington UA	47	Copeland	27
Hartlepool UA	74	Eden	31
Middlesbrough UA	78	South Lakeland	50
Redcar and Cleveland UA	74	Greater Manchester (Met County)	1,645
Stockton-on-Tees UA	102	Bolton	236
Durham	338	Bury	129
Chester-le-Street	29	Manchester	242
Derwentshire	67	Oldham	149
Durham	41	Rochdale	135
Easington	85	Salford	124
Sedgefield	67	Stockport	174
Teesdale	11	Tameside	173
Wear Valley	38	Trafford	91
Northumberland	155	Wigan	192
Alnwick	9	Lancashire	653
Berwick-upon-Tweed	16	Burnley	57
Blyth Valley	64	Chorley	45
Castle Morpeth	8	Fylde	34
Tynedale	25	Hyndburn	59
Wansbeck	33	Lancaster	69
Tyne and Wear (Met County)	712	Pendle	68
Gateshead	154	Preston	75
Newcastle-upon-Tyne	144	Ribble Valley	23
North Tyneside	118	Rossendale	56
South Tyneside	92	South Ribble	47
Sunderland	204	West Lancashire	61
NORTH WEST	4,135	Wyre	59
Blackburn with Darwen UA	105	Merseyside (Met County)	908
Blackpool UA	120	Knowsley	124
Halton UA	80	Liverpool	314
Warrington UA	83	St Helens	95
Cheshire	282	Sefton	163
Chester	68	Wirral	212
Congleton	34	YORKSHIRE AND THE HUMBER	2,619
Crewe and Nantwich	43	East Riding of Yorkshire UA	108
Ellesmere Port and Neston	42	Kingston-upon-Hull, City of UA	135
Macclesfield	48	North East Lincolnshire UA	102
Vale Royal	47	North Lincolnshire UA	68
		York UA	110

Table 5.3 : Number of awards by local authority. (continued)

Local authority	All cases	Local authority	All cases
North Yorkshire	255	Lincolnshire	356
Craven	19	Boston	60
Hambleton	42	East Lindsey	122
Harrogate	71	Lincoln	47
Richmondshire	15	North Kesteven	33
Ryedale	11	South Holland	37
Scarborough	74	South Kesteven	37
Selby	23	West Lindsey	20
South Yorkshire (Met County)	771	Northamptonshire	212
Barnsley	151	Corby	24
Doncaster	199	Daventry	20
Rotherham	178	East Northamptonshire	20
Sheffield	243	Kettering	44
		Northampton	64
West Yorkshire (Met County)	1,070	South Northamptonshire	13
Bradford	259	Wellingborough	27
Calderdale	83		
Kirklees	206	Nottinghamshire	350
Leeds	323	Ashfield	62
Wakefield	199	Bassetlaw	48
		Broxtowe	42
EAST MIDLANDS	1,855	Gedling	53
		Mansfield	75
Derby UA	141	Newark and Sherwood	48
Leicester UA	140	Rushcliffe	22
Nottingham UA	144		
Rutland UA	7	WEST MIDLANDS	2,543
Derbyshire	338	Herefordshire, County of UA	94
Amber Valley	53	Stoke-on-Trent UA	168
Bolsover	46	Telford and Wrekin UA	101
Chesterfield	67		
Derbyshire Dales	21	Shropshire	146
Erewash	34	Bridgnorth	15
High Peak	49	North Shropshire	27
North East Derbyshire	37	Oswestry	27
South Derbyshire	31	Shrewsbury and Atcham	52
		South Shropshire	25
Leicestershire	167		
Blaby	33	Staffordshire	354
Charnwood	41	Cannock Chase	50
Harborough	10	East Staffordshire	46
Hinckley and Bosworth	25	Lichfield	43
Melton	11	Newcastle-under-Lyme	57
North West Leicestershire	24	South Staffordshire	39
Oadby and Wigston	23	Stafford	42
		Staffordshire Moorlands	38
		Tamworth	39

Table 5.3 : Number of awards by local authority. (continued)

Local authority	All cases	Local authority	All cases
Warwickshire	185	Essex	380
North Warwickshire	24	Basildon	50
Nuneaton and Bedworth	60	Braintree	48
Rugby	25	Brentwood	11
Stratford-upon-Avon	31	Castle Point	19
Warwick	45	Chelmsford	40
		Colchester	71
West Midlands (Met County)	1,296	Epping Forest	14
Birmingham	526	Harlow	20
Coventry	138	Maldon	14
Dudley	149	Rochford	18
Sandwell	174	Tendring	63
Solihull	75	Uttlesford	12
Walsall	114		
Wolverhampton	120	Hertfordshire	206
		Broxbourne	12
Worcestershire	199	Dacorum	44
Bromsgrove	32	East Hertfordshire	13
Malvern Hills	33	Hertsmere	16
Redditch	45	North Hertfordshire	23
Worcester	25	St. Albans	29
Wychavon	31	Stevenage	19
Wyre Forest	33	Three Rivers	13
		Watford	13
		Welwyn-Hatfield	24
EAST OF ENGLAND	1,559		
		Norfolk	296
Luton UA	58	Breckland	49
Peterborough UA	89	Broadland	31
Southend-on-Sea UA	33	Great Yarmouth	48
Thurrock UA	34	King's Lynn and West Norfolk	50
		North Norfolk	31
Bedfordshire	100	Norwich	53
Bedford	41	South Norfolk	34
Mid Bedfordshire	29		
South Bedfordshire	30	Suffolk	219
		Babergh	18
Cambridgeshire	144	Forest Heath	13
Cambridge	37	Ipswich	56
East Cambridgeshire	14	Mid Suffolk	21
Fenland	38	St. Edmundsbury	28
Huntingdonshire	14	Suffolk Coastal	27
South Cambridgeshire	41	Waveney	56

Table 5.3 : Number of awards by local authority. (continued)

Local authority	All cases	Local authority	All cases
LONDON	1,412	SOUTH EAST	2,263
Inner London	534	Bracknell Forest UA	20
Inner London - West	162	Brighton and Hove UA	124
Camden	43	Isle of Wight UA	63
Hammersmith and Fulham	21	Medway UA	80
Kensington and Chelsea	30	Milton Keynes UA	85
Wandsworth	41	Portsmouth UA	60
Westminster and City of London	27	Reading UA	31
Inner London - East	372	Slough UA	15
Hackney	54	Southampton UA	87
Haringey	31	West Berkshire UA	23
Islington	35	Windsor and Maidenhead UA	18
Lambeth	46	Wokingham UA	18
Lewisham	55	Buckinghamshire	100
Newham	68	Aylesbury Vale	33
Southwark	50	Chiltern	17
Tower Hamlets	33	South Bucks	9
Outer London	878	Wycombe	41
Outer London - East and North East	332	East Sussex	159
Barking and Dagenham	44	Eastbourne	33
Bexley	56	Hastings	45
Enfield	39	Lewes	27
Greenwich	43	Rother	27
Havering	50	Wealden	27
Redbridge	41	Hampshire	359
Waltham Forest	59	Basingstoke and Deane	40
Outer London - South	214	East Hampshire	27
Bromley	41	Eastleigh	34
Croydon	85	Fareham	29
Kingston-upon-Thames	17	Gosport	29
Merton	28	Hart	24
Sutton	43	Havant	51
Outer London - West and North West	332	New Forest	49
Barnet	54	Rushmoor	18
Brent	55	Test Valley	37
Ealing	48	Winchester	21
Harrow	43	Kent	424
Hillingdon	40	Ashford	35
Hounslow	67	Canterbury	35
Richmond-upon-Thames	25	Dartford	21
		Dover	31
		Gravesham	30
		Maidstone	31
		Sevenoaks	28
		Shepway	47
		Swale	46
		Thanet	72
		Tonbridge and Malling	27
		Tunbridge Wells	21

Table 5.3 : Number of awards by local authority. (continued)

Local authority	All cases	Local authority	All cases
Oxfordshire	174	Devon	347
Cherwell	45	East Devon	51
Oxford	36	Exeter	50
South Oxfordshire	35	Mid Devon	28
Vale of White Horse	32	North Devon	47
West Oxfordshire	26	South Hams	40
		Teignbridge	71
Surrey	189	Torridge	45
Elmbridge	21	West Devon	15
Epsom and Ewell	17		
Guildford	14	Dorset	178
Mole Valley	27	Christchurch	19
Reigate and Banstead	23	East Dorset	32
Runnymede	14	North Dorset	32
Spelthorne	12	Purbeck	19
Surrey Heath	16	West Dorset	40
Tandridge	13	Weymouth and Portland	36
Waverley	16		
Woking	16	Gloucestershire	199
		Cheltenham	42
West Sussex	234	Cotswold	17
Adur	23	Forest of Dean	30
Arun	47	Gloucester	46
Chichester	38	Stroud	38
Crawley	31	Tewkesbury	26
Horsham	27		
Mid Sussex	42	Somerset	226
Worthing	26	Mendip	39
		Sedgemoor	49
SOUTH WEST	2,431	South Somerset	72
		Taunton Deane	46
Bath and North East Somerset UA	73	West Somerset	20
Bournemouth UA	127		
Bristol, City of UA	169	Wiltshire	123
North Somerset UA	64	Kennet	20
Plymouth UA	244	North Wiltshire	35
Poole UA	55	Salisbury	39
South Gloucestershire UA	79	South Wiltshire	29
Swindon UA	77		
Torbay UA	136		
Cornwall, and the Isles of Scilly	334		
Caradon	49		
Carrick	45		
Kerrier	69		
North Cornwall	55		
Penwith and Isles of Scilly	54		
Restormel	62		

Table 5.3 : Number of awards by local authority. (continued)

Local authority	All cases	Local authority	All cases
WALES	2,213	Moray	31
Blaenau Gwent	102	North Ayrshire	68
Bridgend	96	North Lanarkshire	235
Caerphilly	187	Orkney Islands	16
Cardiff	156	Perth and Kinross	68
Carmarthenshire	120	Renfrewshire	118
Ceredigion	57	Scottish Borders, The	55
Conwy	72	Shetland Islands	6
Denbighshire	68	South Ayrshire	47
Flintshire	82	South Lanarkshire	167
Gwynedd	73	Stirling	37
Isle of Anglesey	69	West Dunbartonshire	40
Merthyr Tydfil	85	West Lothian	108
Monmouthshire	38		
Neath Port Talbot	143	GREAT BRITAIN - Country unknown	-
Newport	78		
Pembrokeshire	131		
Powys	89	NORTHERN IRELAND	1,648
Rhondda, Cynon, Taff	188	Antrim	38
Swansea	151	Ards	42
Torfaen	71	Armagh	50
Vale of Glamorgan, The	54	Ballymena	35
Wrexham	103	Ballymoney	23
		Banbridge	43
SCOTLAND	2,532	Belfast	317
Aberdeen City	63	Carrickfergus	25
Aberdeenshire	66	Castlereagh	60
Angus	47	Coleraine	31
Argyll and Bute	30	Cookstown	40
Clackmannanshire	16	Craigavon	104
Dumfries and Galloway	64	Derry	101
Dundee City	91	Down	67
East Ayrshire	54	Dungannon	54
East Dunbartonshire	40	Fermanagh	43
East Lothian	49	Larne	20
East Renfrewshire	36	Limavady	31
Edinburgh, City of	196	Lisburn	114
Eilean Siar (Western Isles)	10	Magherafelt	42
Falkirk	67	Moyle	15
Fife	179	Newry and Mourne	84
Glasgow City	321	Newtonabbey	67
Highland	114	North Down	58
Inverclyde	49	Omagh	56
Midlothian	44	Strabane	68
		Unknown	20

Table 5.4 : Number of awards by parliamentary constituency.

Parliamentary constituency	All cases	Parliamentary constituency	All cases
UNITED KINGDOM	26,790	Bolton South East	72
		Bolton West	57
GREAT BRITAIN	25,142	Bootle	74
		Boston and Skegness	98
ENGLAND	20,397	Bosworth	25
		Bournemouth East	69
Aldershot	40	Bournemouth West	58
Aldridge - Brownhills	27	Bracknell	20
Altrincham and Sale West	27	Bradford North	57
Amber Valley	40	Bradford South	59
Arundel and South Downs	20	Bradford West	54
Ashfield	52	Braintree	35
Ashford	35	Brent East	19
Ashton under Lyne	77	Brent North	13
Aylesbury	18	Brent South	23
Banbury	34	Brentford and Isleworth	32
Barking	22	Brentwood and Ongar	13
Barnsley Central	60	Bridgwater	52
Barnsley East and Mexborough	61	Brigg and Goole	38
Barnsley West and Penistone	49	Brighton, Kemptown	61
Barrow and Furness	70	Brighton, Pavilion	39
Basildon	38	Bristol East	36
Basingstoke	33	Bristol North West	60
Bassetlaw	52	Bristol South	51
Bath	43	Bristol West	27
Batley and Spen	43	Bromley and Chislehurst	10
Battersea	15	Bromsgrove	32
Beaconsfield	19	Broxbourne	12
Beckenham	13	Broxtowe	37
Bedford	27	Buckingham	17
Berwick-upon-Tweed	26	Burnley	57
Bethnal Green and Bow	19	Burton	45
Beverley and Holderness	43	Bury North	61
Bexhill and Battle	28	Bury South	67
Bexleyheath and Crayford	24	Bury St. Edmunds	27
Billericay	21	Calder Valley	39
Birkenhead	77	Camberwell and Peckham	25
Birmingham, Edgbaston	31	Cambridge	33
Birmingham, Erdington	70	Cannock Chase	51
Birmingham, Hall Green	38	Canterbury	27
Birmingham, Hodge Hill	59	Carlisle	40
Birmingham, Ladywood	47	Carshalton and Wallington	27
Birmingham, Northfield	41	Castle Point	19
Birmingham, Perry Barr	44	Central Suffolk and North Ipswich	23
Birmingham, Selly Oak	43	Charnwood	24
Birmingham, Sparkbrook and Small Heath	74	Chatham and Aylesford	33
Birmingham, Yardley	42	Cheadle	49
Bishop Auckland	47	Cheltenham	34
Blaby	22	Chesham and Amersham	18
Blackburn	80	Chesterfield	63
Blackpool North and Fleetwood	73	Chester, City of	54
Blackpool South	81	Chichester	36
Blaydon	55	Chingford and Woodford Green	20
Blyth Valley	64	Chipping Barnet	18
Bognor Regis and Littlehampton	37	Chorley	45
Bolsover	47	Christchurch	41
Bolton North East	107	Cities of London and Westminster	9

Table 5.4 : Number of awards by parliamentary constituency. (continued)

Parliamentary constituency	All cases	Parliamentary constituency	All cases
Cleethorpes	49	Esher and Walton	20
Colchester	48	Exeter	50
Colne Valley	54	Falmouth and Camborne	78
Congleton	34	Fareham	28
Copeland	27	Faversham and Mid Kent	18
Corby	32	Feltham and Heston	35
Cotswold	17	Finchley and Golders Green	18
Coventry North East	57	Folkestone and Hythe	46
Coventry North West	53	Forest of Dean	33
Coventry South	28	Fylde	45
Crawley	31	Gainsborough	20
Crewe and Nantwich	41	Gateshead East and Washington West	62
Crosby	25	Gedling	43
Croydon Central	29	Gillingham	27
Croydon North	31	Gloucester	46
Croydon South	25	Gosport	30
Dagenham	21	Grantham and Stamford	33
Darlington	43	Gravesham	30
Dartford	25	Great Grimsby	60
Daventry	29	Great Yarmouth	48
Denton and Reddish	69	Greenwich and Woolwich	14
Derby North	64	Guildford	11
Derby South	60	Hackney North and Stoke Newington	19
Devizes	35	Hackney South and Shoreditch	35
Dewsbury	45	Halesowen and Rowley Regis	44
Don Valley	42	Halifax	44
Doncaster Central	68	Haltemprice and Howden	16
Doncaster North	70	Halton	53
Dover	29	Hammersmith and Fulham	15
Dudley North	46	Hampstead and Highgate	13
Dudley South	42	Harborough	28
Dulwich and West Norwood	20	Harlow	20
Durham,. City of	41	Harrogate and Knaresborough	48
Ealing North	18	Harrow East	25
Ealing Southall	23	Harrow West	18
Ealing, Acton and Shepherd's Bush	13	Hartlepool	74
Easington	79	Harwich	51
East Devon	30	Hastings and Rye	45
East Ham	33	Havant	45
East Hampshire	26	Hayes and Harlington	18
East Surrey	18	Hazel Grove	48
East Worthing and Shoreham	33	Hemel Hempstead	35
East Yorkshire	32	Hemsworth	61
Eastbourne	34	Hendon	18
Eastleigh	33	Henley	18
Eccles	36	Hereford	63
Eddisbury	42	Hertford and Stortford	10
Edmonton	18	Hertsmere	15
Ellesmere Port and Neston	44	Hexham	27
Elmet	30	Heywood and Middleton	52
Eltham	17	High Peak	51
Enfield North	14	Hitchin and Harpenden	12
Enfield, Southgate	7	Holborn and St Pancras	30
Epping Forest	12	Hornchurch	20
Epsom and Ewell	23	Hornsey and Wood Green	17
Erewash	33	Horsham	21
Erith and Thamesmead	24	Houghton and Washington East	50

Table 5.4 : Number of awards by parliamentary constituency. (continued)

Parliamentary constituency	All cases	Parliamentary constituency	All cases
Hove	35	Manchester, Withington	31
Huddersfield	48	Mansfield	65
Huntingdon	6	Medway	27
Hyndburn	66	Meriden	46
Ilford North	19	Mid Bedfordshire	20
Ilford South	16	Mid Dorset and North Poole	35
Ipswich	47	Mid Norfolk	30
Isle of Wight	63	Mid Sussex	36
Islington North	21	Mid Worcestershire	28
Islington South and Finsbury	14	Middlesbrough	48
Jarrow	62	Middlesbrough South and East Cleveland	57
Keighley	49	Milton Keynes North East	34
Kensington and Chelsea	11	Milton Keynes South West	51
Kettering	44	Mitcham and Morden	17
Kingston and Surbiton	13	Mole Valley	26
Kingston upon Hull East	51	Morecambe and Lunesdale	47
Kingston upon Hull North	47	Morley and Rothwell	47
Kingston upon Hull West and Hessle	41	New Forest East	23
Kingswood	40	New Forest West	26
Knowsley North and Sefton East	74	Newark	26
Knowsley South	77	Newbury	16
Lancaster and Wyre	46	Newcastle upon Tyne Central	46
Leeds Central	48	Newcastle upon Tyne East and Wallsend	45
Leeds East	47	Newcastle upon Tyne North	53
Leeds North East	50	Newcastle-under-Lyme	45
Leeds North West	20	Normanton	50
Leeds West	38	North Cornwall	79
Leicester East	39	North Devon	50
Leicester South	57	North Dorset	41
Leicester West	44	North Durham	60
Leigh	70	North East Bedfordshire	27
Leominster	33	North East Cambridgeshire	41
Lewes	20	North East Derbyshire	39
Lewisham East	26	North East Hampshire	9
Lewisham West	14	North East Hertfordshire	19
Lewisham, Deptford	15	North Essex	34
Leyton and Wanstead	25	North Norfolk	31
Lichfield	39	North Shropshire	54
Lincoln	49	North Southwark and Bermondsey	14
Liverpool, Garston	57	North Swindon	35
Liverpool, Riverside	57	North Thanet	48
Liverpool, Walton	72	North Tyneside	56
Liverpool, Wavertree	65	North Warwickshire	41
Liverpool, West Derby	62	North West Cambridgeshire	39
Loughborough	28	North West Durham	53
Louth and Horncastle	83	North West Hampshire	29
Ludlow	32	North West Leicestershire	24
Luton North	34	North West Norfolk	44
Luton South	25	North Wiltshire	28
Macclesfield	29	Northampton North	45
Maidenhead	19	Northampton South	22
Maidstone and The Weald	21	Northavon	28
Makerfield	64	Norwich North	37
Maldon and East Chelmsford	20	Norwich South	39
Manchester, Blackley	54	Nottingham East	44
Manchester, Central	54	Nottingham North	54
Manchester, Gorton	47	Nottingham South	46

Table 5.4 : Number of awards by parliamentary constituency. (continued)

Parliamentary constituency	All cases	Parliamentary constituency	All cases
Nuneaton	46	Sherwood	53
Old Bexley and Sidcup	18	Shipley	40
Oldham East and Saddleworth	64	Shrewsbury and Atcham	52
Oldham West and Royton	70	Sittingbourne and Sheppey	39
Orpington	18	Skipton and Ripon	35
Oxford East	30	Sleaford and North Hykeham	32
Oxford West and Abingdon	30	Slough	14
Pendle	68	Solihull	29
Penrith and The Border	47	Somerton and Frome	40
Peterborough	49	South Cambridgeshire	34
Plymouth, Devonport	121	South Derbyshire	48
Plymouth, Sutton	92	South Dorset	44
Pontefract and Castleford	56	South East Cambridgeshire	25
Poole	35	South East Cornwall	61
Poplar and Canning Town	24	South Holland and The Deepings	40
Portsmouth North	40	South Norfolk	27
Portsmouth South	20	South Ribble	44
Preston	64	South Shields	39
Pudsey	43	South Staffordshire	33
Putney	13	South Suffolk	18
Rayleigh	17	South Swindon	39
Reading East	17	South Thanet	34
Reading West	20	South West Bedfordshire	25
Redcar	47	South West Devon	40
Redditch	46	South West Hertfordshire	17
Regent's Park and Kensington North	36	South West Norfolk	37
Reigate	13	South West Surrey	14
Ribble Valley	34	Southampton, Itchen	41
Richmond (Yorks)	37	Southampton, Test	39
Richmond Park	14	Southend West	12
Rochdale	77	Southport	37
Rochford and Southend East	24	Spelthorne	13
Romford	14	St Albans	22
Romsey	22	St Helens North	50
Rossendale and Darwen	74	St Helens South	45
Rother Valley	56	St Ives	66
Rotherham	62	Stafford	31
Rugby and Kenilworth	25	Staffordshire Moorlands	34
Ruislip - Northwood	12	Stalybridge and Hyde	66
Runnymede and Weybridge	15	Stevenage	21
Rushcliffe	22	Stockport	58
Rutland and Melton	23	Stockton North	58
Ryedale	37	Stockton South	44
Saffron Walden	25	Stoke-on-Trent Central	56
Salford	42	Stoke-on-Trent North	50
Salisbury	36	Stoke-on-Trent South	65
Scarborough and Whitby	62	Stone	29
Scunthorpe	36	Stourbridge	40
Sedgefield	61	Stratford-on-Avon	25
Selby	29	Streatham	14
Sevenoaks	19	Stretford and Urmston	60
Sheffield Central	43	Stroud	38
Sheffield, Attercliffe	48	Suffolk Coastal	24
Sheffield, Brightside	54	Sunderland North	74
Sheffield, Hallam	12	Sunderland South	64
Sheffield, Heeley	43	Surrey Heath	18
Sheffield, Hillsborough	43	Sutton and Cheam	16

Table 5.4 : Number of awards by parliamentary constituency. (continued)

Parliamentary constituency	All cases	Parliamentary constituency	All cases
Sutton Coldfield	37	Wimbledon	11
Tamworth	44	Winchester	21
Tatton	25	Windsor	5
Taunton	48	Wirral South	34
Teignbridge	58	Wirral West	30
Telford	63	Witney	27
Tewkesbury	28	Woking	16
Thurrock	25	Wokingham	13
Tiverton and Honiton	42	Wolverhampton North East	49
Tonbridge and Malling	25	Wolverhampton South East	40
Tooting	13	Wolverhampton South West	31
Torbay	98	Woodspring	23
Torridge and West Devon	60	Worcester	25
Totnes	81	Workington	27
Tottenham	14	Worsley	68
Truro and St. Austell	49	Worthing West	20
Tunbridge Wells	20	Wrekin, The	40
Twickenham	15	Wycombe	28
Tyne Bridge	60	Wyre Forest	32
Tynemouth	46	Wythenshawe and Sale East	58
Upminster	16	Yeovil	54
Uxbridge	10	York, City of	69
Vale of York	48	Unknown	76
Vauxhall	22		
Wakefield	48		
Wallasey	69	WALES	2,213
Walsall North	54		
Walsall South	33	Aberavon	88
Walthamstow	20	Alyn and Deeside	45
Wansbeck	38	Blaenau Gwent	101
Wansdyke	36	Brecon and Radnorshire	45
Wantage	32	Bridgend	61
Warley	43	Caernarfon	40
Warrington North	45	Caerphilly	107
Warrington South	38	Cardiff Central	41
Warwick and Leamington	43	Cardiff North	28
Watford	13	Cardiff South and Penarth	51
Waveney	52	Cardiff West	40
Wealden	21	Carmarthen East and Dinefwr	49
Weaver Vale	39	Carmarthen West and South Pembrokeshire	72
Wellingborough	39	Ceredigion	56
Wells	32	Clwyd South	55
Welwyn Hatfield	24	Clwyd West	38
Wentworth	60	Conwy	46
West Bromwich East	52	Cynon Valley	73
West Bromwich West	55	Delyn	37
West Chelmsford	31	Gower	41
West Derbyshire	31	Islwyn	60
West Dorset	37	Llanelli	53
West Ham	24	Meirionnydd Nant Conwy	23
West Lancashire	54	Merthyr Tydfil and Rhymney	105
West Suffolk	28	Monmouth	34
West Worcestershire	33	Montgomeryshire	44
Westbury	24	Neath	55
Westmorland and Lonsdale	42	Newport East	40
Weston-super-Mare	41	Newport West	46
Wigan	36	Ogmore	45

Table 5.4 : Number of awards by parliamentary constituency. (continued)

Parliamentary constituency	All cases	Parliamentary constituency	All cases
Pontypridd	47	Glasgow, Rutherglen	30
Preseli Pembrokeshire	77	Glasgow, Shettleston	40
Rhondda	62	Glasgow, Springburn	37
Swansea East	67	Gordon	17
Swansea West	43	Greenock and Inverclyde	27
Torfaen	66	Hamilton North and Bellshill	48
Vale of Clwyd	62	Hamilton South	53
Vale of Glamorgan	46	Inverness East, Nairn and Lochaber	40
Wrexham	52	Kilmarnock and Loudoun	32
Ynys Mon	69	Kirkcaldy	32
Unknown	3	Linlithgow	52
		Livingston	56
		Midlothian	39
SCOTLAND	2,532	Moray	28
		Motherwell and Wishaw	53
Aberdeen Central	21	North East Fife	19
Aberdeen North	31	North Tayside	30
Aberdeen South	11	Ochil	23
Airdrie and Shotts	66	Orkney and Shetland	22
Angus	39	Paisley North	51
Argyll and Bute	26	Paisley South	44
Ayr	30	Perth	43
Banff and Buchan	38	Ross, Skye and Inverness West	44
Caithness, Sutherland and Easter Ross	29	Roxburgh and Berwickshire	33
Carrick, Cumnock and Doon Valley	38	Stirling	33
Central Fife	55	Strathkelvin and Bearsden	34
Clydebank and Milngavie	23	Tweeddale, Ettrick and Lauderdale	27
Clydesdale	43	West Aberdeenshire and Kincardine	14
Coatbridge and Chryston	58	West Renfrewshire	45
Cumbernauld and Kilsyth	25	Western Isles	10
Cunninghame North	36	Unknown	4
Cunninghame South	32		
Dumbarton	26		
Dumfries	36	GREAT BRITAIN - Country unknown	-
Dundee East	37		
Dundee West	54		
Dunfermline East	37	NORTHERN IRELAND	1,648
Dunfermline West	36		
East Kilbride	32	Belfast East	66
East Lothian	47	Belfast North	103
Eastwood	36	Belfast South	75
Edinburgh Central	32	Belfast West	162
Edinburgh East and Musselburgh	40	East Antrim	56
Edinburgh North and Leith	29	East Londonderry	62
Edinburgh South	31	Fermanagh and South Tyrone	77
Edinburgh West	26	Foyle	97
Edinburgh, Pentlands	39	Lagan Valley	83
Falkirk East	29	Mid Ulster	100
Falkirk West	38	Newry and Armagh	92
Galloway and Upper Nithsdale	28	North Antrim	71
Glasgow, Anniesland	35	North Down	63
Glasgow, Baillieston	44	South Antrim	76
Glasgow, Cathcart	28	South Down	103
Glasgow, Govan	20	Strangford	61
Glasgow, Kelvin	24	Upper Bann	132
Glasgow, Maryhill	48	West Tyrone	122
Glasgow, Pollok	39	Unknown	47

Table 6.1 : Type and main qualifying benefit of all awards starting between October 1999 and October 2000.

		<i>United Kingdom</i>
	All cases	Average award £ per week
All awards		
All qualifying benefits	55,979	71.55
Disability living allowance - higher rate & analogous benefits	24,032	68.51
Disability living allowance - lower rate	11,694	62.58
Severe disablement benefit	3,961	59.89
Disability premium in IS/JSA/HB/CTB	7,533	89.78
Incapacity benefit (higher rate short term)	1,828	81.60
Incapacity benefit (long term)	6,931	81.46
Fast track applicants	7	42.42
New awards ¹		
All qualifying benefits	15,707	70.80
Disability living allowance - higher rate & analogous benefits	5,903	63.87
Disability living allowance - lower rate	3,045	64.35
Severe disablement benefit	1,150	61.71
Disability premium in IS/JSA/HB/CTB	2,557	90.31
Incapacity benefit (higher rate short term)	706	80.17
Incapacity benefit (long term)	2,346	76.97
Fast track applicants	7	42.42
Renewal awards ²		
All qualifying benefits	36,794	72.42
Disability living allowance - higher rate & analogous benefits	16,313	70.47
Disability living allowance - lower rate	7,822	62.49
Severe disablement benefit	2,639	59.47
Disability premium in IS/JSA/HB/CTB	4,663	89.97
Incapacity benefit (higher rate short term)	1,053	83.10
Incapacity benefit (long term)	4,304	84.16
Repeat awards ³		
All qualifying benefits	3,478	65.80
Disability living allowance - higher rate & analogous benefits	1,816	65.97
Disability living allowance - lower rate	827	56.86
Severe disablement benefit	172	54.26
Disability premium in IS/JSA/HB/CTB	313	82.52
Incapacity benefit (higher rate short term)	69	73.31
Incapacity benefit (long term)	281	77.63

Notes :

1. New awards are made to people who have never received DWA or DPTC before.
2. Renewal awards are those following on immediately from a previous award without a break.
3. Repeat awards are those where there has been a previous award but there has been a break between claims of up to 2 years.
4. Figures for DWA awards in Great Britain starting between November 1992 and August 1999 appear in the enquiry statistics for October 1999.
5. Entrants through the fast track are not required to be receiving, or to have received, a benefit to qualify for an award. They are however included here for completeness.

(NB if the previous award ended more than 2 years earlier then the claim will be treated as 'New'.)

Table 6.2 : Awards starting between October 1999 and October 2000 by type of award and family type.

United Kingdom

	All Cases	Couples		Singles	
		Male	Female	Male	Female
All awards	55,986	17,265	3,661	15,114	19,946
New awards ¹	15,714	4,760	1,278	3,874	5,802
Renewal awards ²	36,794	11,565	2,128	10,176	12,925
Repeat awards ³	3,478	940	255	1,064	1,219

Notes :

1. New awards are made to people who have never received DWA or DPTC before.
2. Renewal awards are those following on immediately from a previous award without a break.
3. Repeat awards are those where there has been a previous award but there has been a break between claims.
4. Figures for DWA awards in Great Britain starting between November 1992 and August 1999 appear in the enquiry statistics for October 1999.

(NB if the previous award ended more than 2 years earlier then the claim will be treated as 'NEW'.)

Table 6.3 : Disallowances between October 1999 and October 2000 by reason of disallowance.*United Kingdom*

		Number of disallowances
All disallowances		10,846
All A codes		64
A1	Claimant was not in UK	61
A2	Claimant was not normally living in UK	-
A3	Partner not normally living in UK	-
A4	All claimants earnings from outside UK	-
All C codes		115
C1	Claimant's capital exceeds £16,000	92
C2	Claimant and partner's capital exceeds £16,000	16
C3	Failure to provide information about value of claimant and partner's capital	-
C4	Failure to provide information about value of claimant's capital	5
All D codes		2,212
D1	Claimant not doing paid work for an average of 16 hours a week or more	778
D2	Claimant not in paid work	698
D5	Claimant not engaged in remunerative work in relevant weeks	556
D7	Claimant not normally engaged in paid work	165
D9	Claimant not treated as in paid work - voluntary	-
D11	Claimant not treated as in paid work - charity	-
D13	Claimant working for voluntary body - expenses	-
D15	Claimant could not be treated as in paid work on the information available	13
All E codes		2,175
E1	Claimant's income higher than the level at which DPTC would become payable	1,915
E2	Claimant's entitlement less than the minimum amount of DPTC	45
E3	On the information available the claimant or partner's income was higher then the level at which DPTC would become payable	215
All other codes		
G1	Any disallowance not covered by other categories	180
I	DPTC claim made more than 6 weeks before DPTC end date	1,791
J1	Qualifying benefit test not satisfied	2,978
K1	Disability test not satisfied	615
L	Lapsed claim	24
W	Claimant has withdrawn claim	683

Notes :

1. Figures for DWA disallowances in Great Britain occurring between November 1992 and August 1999 appear in the enquiry statistics for October 1999.

Table 6.4 : Renewal and repeat awards starting between October 1999 and October 2000 by disability type and age of claimant.

United Kingdom

	All ages	Under 30	30 - 39	40 - 49	50 - 59	60 and over
Renewal awards ¹						
Mental disabilities - treatment	2,634	322	1,019	875	389	29
Mental disabilities - day to day things	3,432	1,066	1,138	820	372	36
Mental disabilities - getting on with people	2,836	632	1,085	743	354	22
Fits and comas	255	58	112	60	25	-
Exhaustion and pain	10,316	1,041	3,255	3,427	2,236	357
Seeing	1,104	244	393	293	148	26
Hearing	591	121	205	153	95	17
Communicating	1,067	316	344	249	132	26
Getting around	1,574	164	457	525	356	72
Using your hands	1,640	340	562	450	257	31
Reaching with your arms	246	36	76	72	62	-
Repeat awards ²						
Mental disabilities - treatment	240	38	92	80	30	-
Mental disabilities - day to day things	299	98	101	69	31	-
Mental disabilities - getting on with people	273	68	103	74	28	-
Fits and comas	26	15	6	5	-	-
Exhaustion and pain	762	119	251	246	136	10
Seeing	129	38	49	31	11	-
Hearing	67	18	25	16	8	-
Communicating	100	38	32	17	13	-
Getting around	117	18	34	29	36	-
Using your hands	187	54	65	45	23	-
Reaching with your arms	34	11	6	11	6	-

Notes :

1. Renewal awards are those following on immediately from a previous award without a break.
2. Repeat awards are those where there has been a previous award but there has been a break
3. Claimants may have one or more type(s) of disability. This table records all declared and confirmed disability types for those claimants who complete form DPTC2 prior to renewal/ repeat awards.
4. Figures for DWA awards in Great Britain starting between November 1992 and August 1999 appear in the enquiry statistics for October 1999.

£5.00