



INLAND REVENUE
Analysis and Research

Disabled Person's Tax Credit Statistics

Quarterly Enquiry

United Kingdom July 2001



A National Statistics Publication
© Crown Copyright 2001

Contact point for enquiries and requests for further copies:-

Analysis and Research (TCASP)
Inland Revenue
Room 54 - New Wing
Somerset House
London
WC2R 1LB
☎ : 020 - 7438 6275
Fax : 020 - 7438 4329
E-mail : ar_tcasp.ir.sh@gtnet.gov.uk

This, and issues back to October 1999 can be found on the Inland Revenue web site : www.inlandrevenue.gov.uk / statistics

The October 2001 issue is due to be published on the web site on Tuesday 12th March 2002

A NATIONAL STATISTICS PUBLICATION

National Statistics are produced to high professional standards set out in the National Statistics Code of Practice. They undergo regular quality assurance reviews to ensure that they meet customer needs. They are produced free from any political interference.

For general enquiries about National Statistics, contact the National Statistics Public Enquiry Service on

☎ : 020 - 7533 5888
minicom : 01633 812399
E-mail : info@statistics.gov.uk
Fax : 01633 652747
Letters : room DG/18, 1 Drummond Gate, LONDON, SW1V 2QQ

You can also find National Statistics on the internet - go to www.statistics.gov.uk

Disabled Person's Tax Credit Statistics

Quarterly Enquiry

United Kingdom

July 2001

| Contents | PAGE |
|---|-------------|
| Introduction | 1 |
| Main findings | 1 |
| List of tables | 2 |
| Section 1 : Time series | 4 |
| Section 2 : Family type | 7 |
| Section 3 : Amount of award | 10 |
| Section 4 : Earnings and other income | 12 |
| Section 5 : Regional analysis | 14 |
| Section 6 : Historical DPTC | 16 |

Introduction

Disabled Person's' Tax Credit (DPTC) is a tax credit available to adults who are in remunerative work for at least 16 hours per week, and who have an illness or disability which puts them at a disadvantage in getting a job.

Awards of DPTC cover 26 weeks. These tables cover recipients at 31 July 2001 (that is, with awards with start and end dates spanning this date).

DPTC replaced Disability Working Allowance (DWA) from 5 October 1999. Time series of the number of recipients of DPTC and DWA are also shown, but for dates before October 1999 figures are available only for cases dealt with by the Great Britain tax credit office (that is, excluding cases dealt with by the Northern Ireland office).

The figures in the tables are based on a 100% scan of awards. They have been compiled four months after the reference date, by which time almost all awards current at the reference date have been processed and entered onto the computer system. The tables cover recipients in the United Kingdom, unless otherwise stated. To ensure that information about individuals is not disclosed, most cells containing less than five cases are shown as '-', and some other cells are bracketed together.

Previous issues of this publication have shown the number of recipients in each local authority and parliamentary constituency in Section 5. These figures will now be included instead in a new publication giving local area figures for both DPTC and Working Families' Tax Credit. The first issue of "Working Families' and Disabled Person's Tax Credit Statistics: Geographical analyses", for August 2001, will be published in January 2002.

Main Findings

There were 30,863 recipients of DPTC at 31 July 2001, 6 per cent higher than at 30 April 2001.

19,548 of the recipients were single adults (including lone parents), who had an average award of £63.76 per week. 11,315 were in couples; they had an average award of £93.78 per week.

The overall average award was £74.77 per week.

46 per cent of recipients had children. Their average weekly award was £110.84, compared with £44.03 for recipients with no children.

For 42 per cent of recipients, higher rate Disability living allowance, or an analogous benefit, was the main qualifying benefit. Lower rate Disability living allowance was the main qualifying benefit for a further 21 per cent.

For recipients with children, 63% of awards were over £100 per week.

The average gross weekly earnings of the recipients was £130.30.

List of Tables

Section 1 : Time series

- Table 1.1 DWA/DPTC recipients by family type, January 1993 - July 2001.
- Chart 1 DWA/DPTC recipients by family type, GB office, Jan 1993 - Jul 2001
July 2001.
- Table 1.2 Average DWA/DPTC award by family type of recipients,
January 1993 - July 2001.
- Chart 2 Average DWA/DPTC award by family type of recipients, GB office,
January 1993 to April 2001

Section 2 : Family type

- Table 2.1 Age and gender of recipients, and whether with children.
- Chart 3 Recipients by age, and whether with children.
- Table 2.2 Gender and family type of recipients, and average weekly award.
- Chart 4 Family type and gender of recipients.
- Table 2.3 Main qualifying benefit of recipients, by whether with children,
and average weekly award.

Section 3 : Amount of award

- Table 3.1 Family type and gender of recipients, by weekly amount of award.
- Table 3.2 Family size and type of recipients, by weekly amount of award.
- Chart 5 Recipients by number of children in family, and by family type.

Section 4 : Earnings and other income

- Table 4.1 Gross weekly earnings of recipients, by family type.
- Chart 6 Recipients by gross weekly earnings, and by whether with children.
- Table 4.2 Recipients whose family incomes include social security benefits which are brought to account, by family type.
- Table 4.3 Recipients whose families receive other income which is brought to account, by family type.

Section 5 : Regional analysis

- Table 5.1 Recipients in each Government Office Region, by employment status and family type.
- Table 5.2 Average weekly award for recipients in each Government Office Region, by employment status and family type.

Section 6 : Historical DPTC

- Table 6.1 Main qualifying benefit of recipients of awards starting between October 1999 and April 2001, by type of award.
- Table 6.2 : Recipients of awards starting between October 1999 and July 2001 by type of award and family type.
- Table 6.3 : Disallowances between October 1999 and July 2001 by reason of disallowance.
- Table 6.4 : Recipients of renewal and repeat awards starting between October 1999 and April by disability type and age.

Section 1 : Time series

This section shows back quarterly series for the number of recipients of Disability Working Allowance and Disabled Person's Tax Credit, and their average awards.

For November 1999 and February 2000 the recipients are a mixture of Disability Working Allowance and Disabled Person's Tax Credit recipients. Disability Working Allowance recipients are those with awards starting up to 30 September 1999 and still current at the reference date.

The figures up to April 2001 are slightly different to those published last time. Firstly, they take account of the most up to date information on backdated awards, and of any changes to the termination dates of awards.

Secondly, the figures for Great Britain from October 1999 now cover cases dealt with by the Great Britain office, rather than recipients with addresses in Great Britain. This is now consistent with the coverage of the figures for earlier dates. Details of recipients living in Great Britain can be obtained from Section 5.

Table 1.1 : DWA/DPTC recipients by family type, January 1993 - July 2001.*United Kingdom*

| | All recipients | | In couples | | Singles | |
|--------|------------------------|--------|------------------------|--------|------------------------|--------|
| | GB office ¹ | Total | GB office ¹ | Total | GB office ¹ | Total |
| Jan-93 | 904 | - | 361 | - | 543 | - |
| Jan-94 | 3,722 | - | 1,392 | - | 2,330 | - |
| Jan-95 | 5,277 | - | 1,990 | - | 3,287 | - |
| Apr-95 | 5,782 | - | 2,152 | - | 3,630 | - |
| Jul-95 | 6,615 | - | 2,465 | - | 4,150 | - |
| Oct-95 | 7,719 | - | 2,899 | - | 4,820 | - |
| Jan-96 | 8,406 | - | 3,186 | - | 5,220 | - |
| Apr-96 | 9,416 | - | 3,638 | - | 5,778 | - |
| Jul-96 | 10,577 | - | 4,049 | - | 6,528 | - |
| Oct-96 | 11,409 | - | 4,359 | - | 7,050 | - |
| Jan-97 | 11,979 | - | 4,620 | - | 7,359 | - |
| Apr-97 | 12,689 | - | 4,881 | - | 7,808 | - |
| Jul-97 | 13,575 | - | 5,191 | - | 8,384 | - |
| Oct-97 | 14,306 | - | 5,405 | - | 8,901 | - |
| Jan-98 | 14,564 | - | 5,500 | - | 9,064 | - |
| Apr-98 | 15,145 | - | 5,753 | - | 9,392 | - |
| Jul-98 | 15,910 | - | 6,040 | - | 9,870 | - |
| Oct-98 | 16,353 | - | 6,125 | - | 10,228 | - |
| Jan-99 | 16,483 | - | 6,093 | - | 10,390 | - |
| Apr-99 | 16,904 | - | 6,263 | - | 10,641 | - |
| Jul-99 | 17,305 | - | 6,400 | - | 10,905 | - |
| Oct-99 | 18,236 | 19,445 | 6,742 | 7,207 | 11,494 | 12,238 |
| Jan-00 | 19,684 | 21,017 | 7,227 | 7,740 | 12,457 | 13,277 |
| Apr-00 | 21,848 | 23,373 | 8,120 | 8,725 | 13,728 | 14,648 |
| Jul-00 | 23,714 | 25,355 | 8,932 | 9,574 | 14,782 | 15,781 |
| Oct-00 | 25,094 | 26,830 | 9,329 | 9,992 | 15,765 | 16,838 |
| Jan-01 | 26,132 | 27,954 | 9,689 | 10,368 | 16,443 | 17,586 |
| Apr-01 | 27,296 | 29,225 | 10,112 | 10,827 | 17,184 | 18,398 |
| Jul-01 | 28,880 | 30,863 | 10,592 | 11,315 | 18,288 | 19,548 |

¹ Cases dealt with by the Northern Ireland tax credit office are excluded from the "GB office" series.

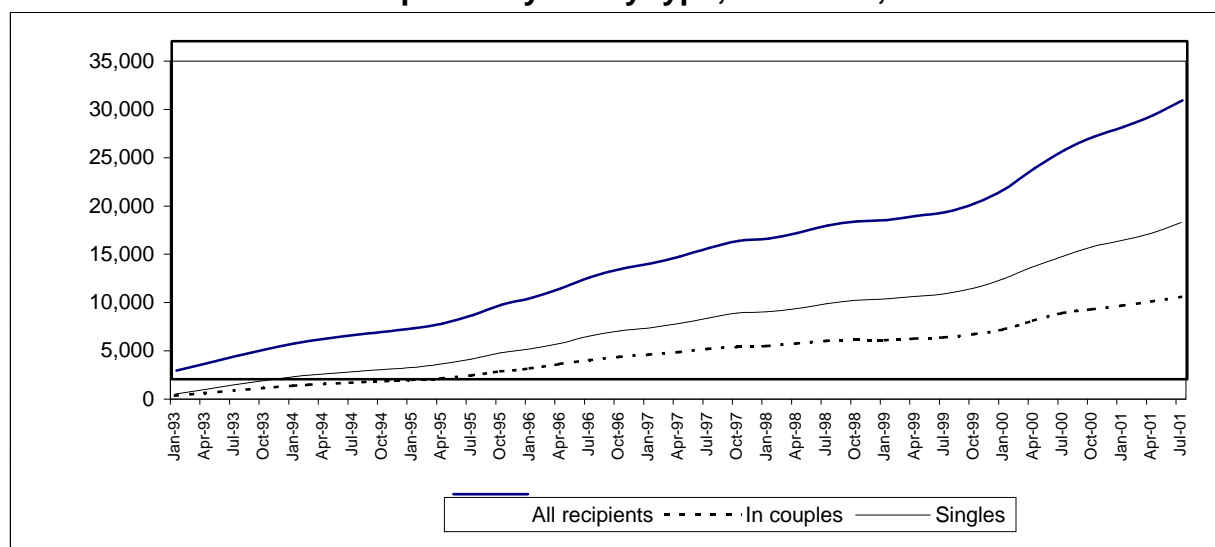
Chart 1 : DWA/DPTC recipients by family type, GB office, Jan 1993 - Jul 2001

Table 1.2 : Average DWA/DPTC award by family type of recipients, January 1993 - July 2001.

United Kingdom, £ per week

| | All recipients | | In couples | | Singles | |
|--------|------------------------|-------|------------------------|-------|------------------------|-------|
| | GB office ¹ | Total | GB office ¹ | Total | GB office ¹ | Total |
| Jan-93 | 35.37 | - | 43.59 | - | 29.91 | - |
| Jan-94 | 40.71 | - | 53.03 | - | 33.36 | - |
| Jan-95 | 44.79 | - | 58.93 | - | 36.23 | - |
| Apr-95 | 45.46 | - | 59.43 | - | 37.17 | - |
| Jul-95 | 49.65 | - | 64.32 | - | 40.94 | - |
| Oct-95 | 53.87 | - | 69.90 | - | 44.22 | - |
| Jan-96 | 54.35 | - | 70.25 | - | 44.65 | - |
| Apr-96 | 54.72 | - | 70.84 | - | 44.57 | - |
| Jul-96 | 55.97 | - | 73.10 | - | 45.35 | - |
| Oct-96 | 56.92 | - | 74.22 | - | 46.23 | - |
| Jan-97 | 56.69 | - | 74.06 | - | 45.78 | - |
| Apr-97 | 57.39 | - | 74.89 | - | 46.44 | - |
| Jul-97 | 58.46 | - | 76.47 | - | 47.30 | - |
| Oct-97 | 58.37 | - | 77.22 | - | 46.92 | - |
| Jan-98 | 57.52 | - | 75.83 | - | 46.41 | - |
| Apr-98 | 57.84 | - | 76.08 | - | 46.67 | - |
| Jul-98 | 58.63 | - | 77.10 | - | 47.33 | - |
| Oct-98 | 58.97 | - | 77.98 | - | 47.58 | - |
| Jan-99 | 59.05 | - | 78.89 | - | 47.41 | - |
| Apr-99 | 59.53 | - | 79.38 | - | 47.84 | - |
| Jul-99 | 60.13 | - | 80.31 | - | 48.29 | - |
| Oct-99 | 61.73 | 62.09 | 81.73 | 82.16 | 49.99 | 50.27 |
| Jan-00 | 65.78 | 66.21 | 85.16 | 85.87 | 54.53 | 54.76 |
| Apr-00 | 69.53 | 70.14 | 88.24 | 89.17 | 58.47 | 58.81 |
| Jul-00 | 71.31 | 71.85 | 90.45 | 91.37 | 59.75 | 60.01 |
| Oct-00 | 72.98 | 73.50 | 93.41 | 94.26 | 60.90 | 61.19 |
| Jan-01 | 72.65 | 73.19 | 92.45 | 93.29 | 60.99 | 61.34 |
| Apr-01 | 72.35 | 72.89 | 91.18 | 92.06 | 61.27 | 61.61 |
| Jul-01 | 74.26 | 74.77 | 92.93 | 93.78 | 63.45 | 63.76 |

¹ Cases dealt with by the Northern Ireland tax credit office are excluded from the "GB office" series.

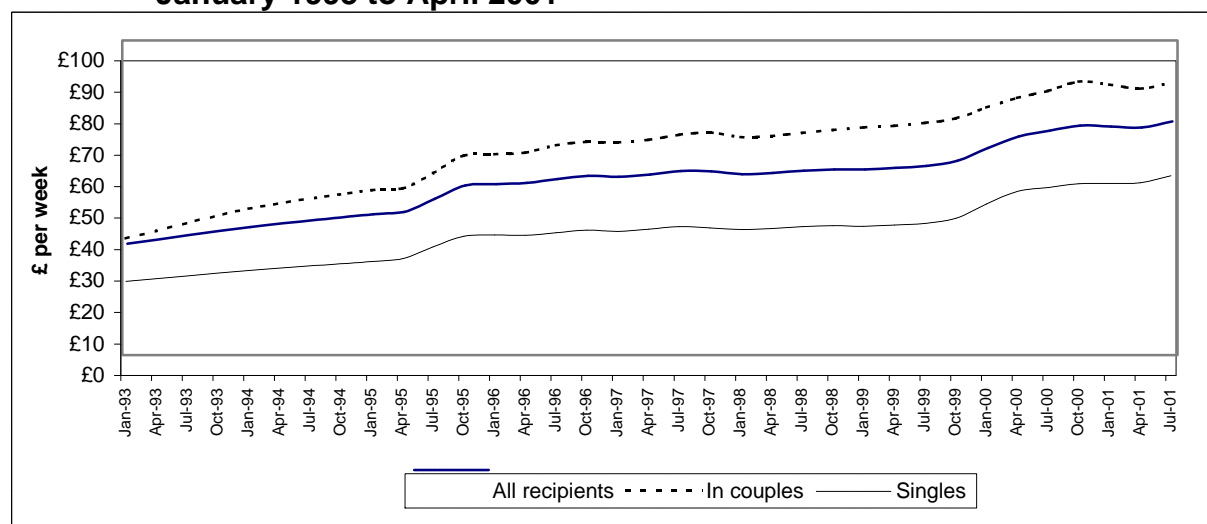
Chart 2 : Average DWA/DPTC award by family type of recipients, GB office, January 1993 to April 2001

Table 2.1 : Age and gender of recipients, and whether with children.

| | <i>United Kingdom</i> | | | | |
|-------------------------|-----------------------|--------|----|--------|----|
| | All recipients | Male | % | Female | % |
| All cases | 30,863 | 17,410 | 56 | 13,453 | 44 |
| Under 20 | 529 | 308 | 58 | 221 | 42 |
| 20 - 29 | 6,147 | 3,405 | 55 | 2,742 | 45 |
| 30 - 39 | 10,320 | 5,499 | 53 | 4,821 | 47 |
| 40 - 49 | 8,715 | 4,940 | 57 | 3,775 | 43 |
| 50 - 59 | 4,561 | 2,761 | 61 | 1,800 | 39 |
| 60 and over | 591 | 497 | 84 | 94 | 16 |
| With children | 14,195 | 7,483 | 53 | 6,712 | 47 |
| Under 20 | 14 | 5 | 36 | 9 | 64 |
| 20 - 29 | 1,413 | 593 | 42 | 820 | 58 |
| 30 - 39 | 6,391 | 3,087 | 48 | 3,304 | 52 |
| 40 - 49 | 5,079 | 2,869 | 56 | 2,210 | 44 |
| 50 - 59 | 1,212 | 854 | 70 | 358 | 30 |
| 60 and over | 86 | 75 | 87 | 11 | 13 |
| Without children | 16,668 | 9,927 | 60 | 6,741 | 40 |
| Under 20 | 515 | 303 | 59 | 212 | 41 |
| 20 - 29 | 4,734 | 2,812 | 59 | 1,922 | 41 |
| 30 - 39 | 3,929 | 2,412 | 61 | 1,517 | 39 |
| 40 - 49 | 3,636 | 2,071 | 57 | 1,565 | 43 |
| 50 - 59 | 3,349 | 1,907 | 57 | 1,442 | 43 |
| 60 and over | 505 | 422 | 84 | 83 | 16 |

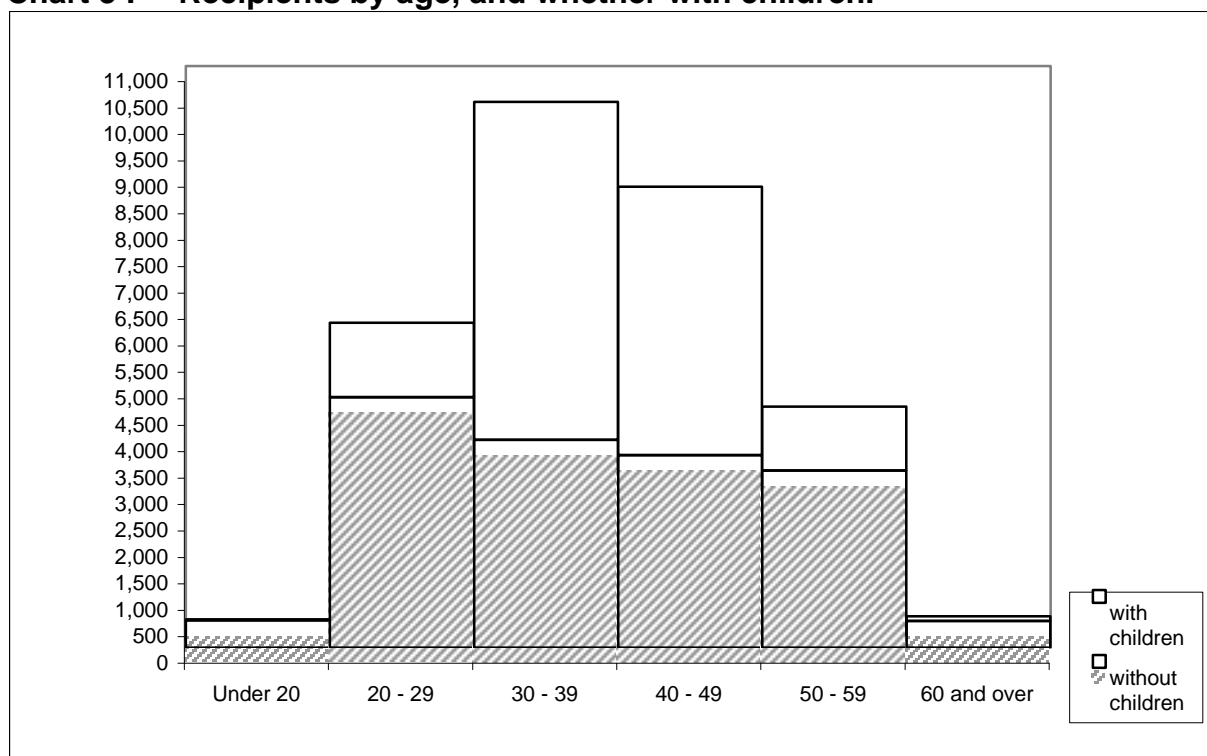
Chart 3 : Recipients by age, and whether with children.

Table 2.2 : Gender and family type of recipients, and average weekly award.

| | | Average award £ per week |
|-------------------------|----------------|--------------------------------|
| <i>United Kingdom</i> | | |
| | All recipients | |
| All cases | 30,863 | 74.77 |
| Male - in couples | 9,198 | 96.81 |
| Female - in couples | 2,117 | 80.61 |
| Male -single | 8,212 | 44.20 |
| Female -single | 11,336 | 77.93 |
| With children | 14,195 | 110.84 |
| Male - in couples | 6,973 | 107.90 |
| Female - in couples | 1,427 | 92.82 |
| Male -single | 510 | 104.77 |
| Female -single | 5,285 | 120.16 |
| Without children | 16,668 | 44.04 |
| Male - in couples | 2,225 | 62.03 |
| Female - in couples | 690 | 55.37 |
| Male -single | 7,702 | 40.19 |
| Female -single | 6,051 | 41.04 |

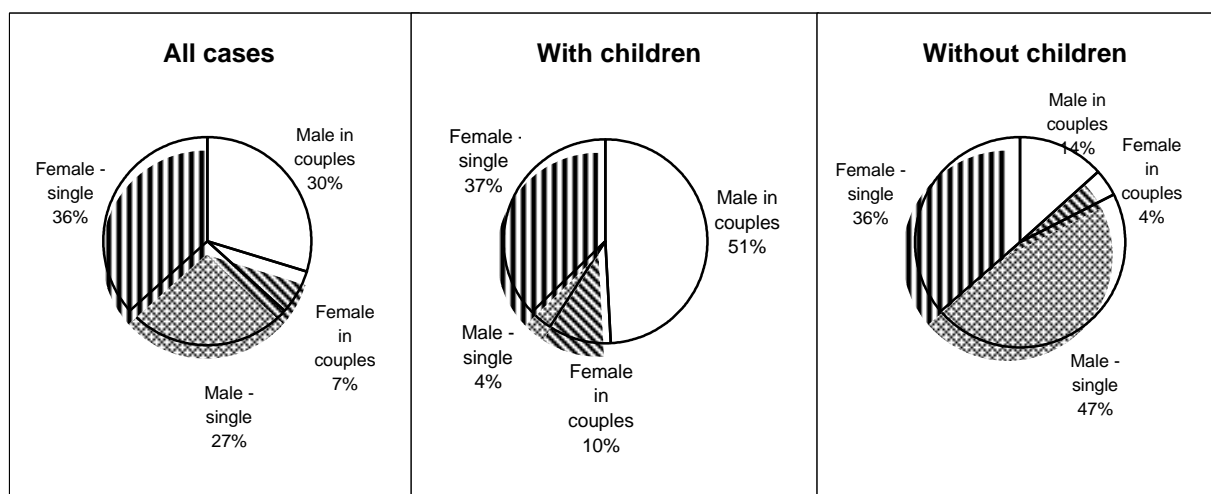
Chart 4 : Family type and gender of recipients.

Table 2.3 : Main qualifying benefit of recipients, by whether with children, and average weekly award.

| | <i>United Kingdom</i> | |
|--|-----------------------|---|
| | Recipients | Average award £ per week |
| All cases | 30,863 | 74.77 |
| Higher rate Disability living allowance and analogous benefits | 13,099 | 71.03 |
| Lower rate Disability living allowance | 6,419 | 65.05 |
| Severe disablement allowance | 2,096 | 61.56 |
| Disability premium in Income support /Jobseeker's allowance | 4,242 | 95.74 |
| Disability premium in Housing benefit | 41 | 73.27 |
| Disability premium in Council tax benefit | 20 | 78.21 |
| Incapacity benefit (higher rate short term) | 1,022 | 86.64 |
| Incapacity benefit (long term) | 3,882 | 84.43 |
| Fast-Track entrants ¹ | 42 | 83.13 |
| With children | 14,195 | 110.84 |
| Higher rate Disability living allowance and analogous benefits | 6,082 | 103.66 |
| Lower rate Disability living allowance | 2,420 | 105.21 |
| Severe disablement allowance | 469 | 119.07 |
| Disability premium in Income support /Jobseeker's allowance | 2,507 | 127.42 |
| Incapacity benefit (higher rate short term) | 592 | 114.34 |
| Incapacity benefit (long term) | 2,082 | 115.37 |
| Other cases ² | 43 | 120.28 |
| Without children | 16,668 | 44.04 |
| Higher rate Disability living allowance and analogous benefits | 7,017 | 42.75 |
| Lower rate Disability living allowance | 3,999 | 40.75 |
| Severe disablement allowance | 1,627 | 44.98 |
| Disability premium in Income support /Jobseeker's allowance | 1,735 | 49.97 |
| Incapacity benefit (higher rate short term) | 430 | 48.52 |
| Incapacity benefit (long term) | 1,800 | 48.66 |
| Other cases ² | 60 | 48.13 |

¹ Entrants through the Fast-Track must be receiving one of Statutory sick pay, Occupational sick pay, Incapacity benefit (lower rate short term), Income support paid on grounds of incapacity or National insurance credits awarded on the grounds of incapacity for work.

² Disability premium in Housing benefit or Council tax benefit, plus Fast-Track entrants.

Table 3.1 : Family type and gender of recipients, by weekly amount of award.*United Kingdom*

| | All cases | Weekly amount of award | | | | | | |
|----------------------------------|-----------|------------------------|--------------------|--------------------|--------------------|--------------------|----------------------|---------------------|
| | | Under £20.00 | £20.00 - £39.99 | £40.00 - £59.99 | £60.00 - £79.99 | £80.00 - £99.99 | £100.00 - £119.99 | £120.00 and over |
| With and without children | | | | | | | | |
| All recipients | 30,863 | 2,335 | 5,766 | 7,467 | 3,457 | 2,775 | 3,431 | 5,632 |
| Male | 17,410 | 1,386 | 3,479 | 4,164 | 2,196 | 1,771 | 1,517 | 2,897 |
| Female | 13,453 | 949 | 2,287 | 3,303 | 1,261 | 1,004 | 1,914 | 2,735 |
| In couples | 11,315 | 574 | 1,068 | 1,326 | 1,531 | 2,027 | 1,640 | 3,149 |
| Male | 9,198 | 379 | 772 | 1,017 | 1,242 | 1,699 | 1,352 | 2,737 |
| Female | 2,117 | 195 | 296 | 309 | 289 | 328 | 288 | 412 |
| Singles | 19,548 | 1,761 | 4,698 | 6,141 | 1,926 | 748 | 1,791 | 2,483 |
| Male | 8,212 | 1,007 | 2,707 | 3,147 | 954 | 72 | 165 | 160 |
| Female | 11,336 | 754 | 1,991 | 2,994 | 972 | 676 | 1,626 | 2,323 |
| With children | | | | | | | | |
| All recipients | 14,195 | 321 | 662 | 987 | 1,418 | 1,847 | 3,328 | 5,632 |
| Male | 7,483 | 191 | 429 | 640 | 862 | 1,020 | 1,444 | 2,897 |
| Female | 6,712 | 130 | 233 | 347 | 556 | 827 | 1,884 | 2,735 |
| In couples | 8,400 | 283 | 565 | 768 | 978 | 1,120 | 1,537 | 3,149 |
| Male | 6,973 | 180 | 415 | 602 | 805 | 955 | 1,279 | 2,737 |
| Female | 1,427 | 103 | 150 | 166 | 173 | 165 | 258 | 412 |
| Singles | 5,795 | 38 | 97 | 219 | 440 | 727 | 1,791 | 2,483 |
| Male | 510 | 11 | 14 | 38 | 57 | 65 | 165 | 160 |
| Female | 5,285 | 27 | 83 | 181 | 383 | 662 | 1,626 | 2,323 |
| Without children | | | | | | | | |
| All recipients | 16,668 | 2,014 | 5,104 | 6,480 | 2,039 | 928 | 103 | - |
| Male | 9,927 | 1,195 | 3,050 | 3,524 | 1,334 | 751 | 73 | - |
| Female | 6,741 | 819 | 2,054 | 2,956 | 705 | 177 | 30 | - |
| In couples | 2,915 | 291 | 503 | 558 | 553 | 907 | 103 | - |
| Male | 2,225 | 199 | 357 | 415 | 437 | 744 | 73 | - |
| Female | 690 | 92 | 146 | 143 | 116 | 163 | 30 | - |
| Singles | 13,753 | 1,723 | 4,601 | 5,922 | 1,486 | 21 | - | - |
| Male | 7,702 | 996 | 2,693 | 3,109 | 897 | 7 | - | - |
| Female | 6,051 | 727 | 1,908 | 2,813 | 589 | 14 | - | - |

Table 3.2 : Family size and type of recipients, by weekly amount of award.*United Kingdom*

| | All cases | Weekly amount of award | | | | | | | Average award £ per week |
|-----------------------|-----------|------------------------|-----------------|-----------------|-----------------|-----------------|-------------------|------------------|-----------------------------|
| | | Under £20.00 | £20.00 - £39.99 | £40.00 - £59.99 | £60.00 - £79.99 | £80.00 - £99.99 | £100.00 - £119.99 | £120.00 and over | |
| All recipients | 30,863 | 2,335 | 5,766 | 7,467 | 3,457 | 2,775 | 3,431 | 5,632 | 74.77 |
| No children | 16,668 | 2,014 | 5,104 | 6,480 | 2,039 | 928 | 103 | - | 44.04 |
| One child | 5,723 | 156 | 367 | 531 | 785 | 1,002 | 2,175 | 707 | 91.42 |
| Two children | 5,245 | 126 | 224 | 358 | 475 | 624 | 846 | 2,592 | 110.60 |
| Three children | 2,253 | 99 | 87 | 133 | 182 | 256 | 1,496 | 133.94 | |
| Four or more children | 974 | 11 | 11 | 25 | 39 | 51 | 837 | 172.82 | |
| In couples | 11,315 | 574 | 1,068 | 1,326 | 1,531 | 2,027 | 1,640 | 3,149 | 93.78 |
| No children | 2,915 | 291 | 503 | 558 | 553 | 907 | 103 | - | 60.45 |
| One child | 2,539 | 126 | 283 | 355 | 437 | 435 | 664 | 239 | 79.67 |
| Two or more children | 5,861 | 157 | 282 | 413 | 541 | 685 | 873 | 2,910 | 116.46 |
| Singles | 19,548 | 1,761 | 4,698 | 6,141 | 1,926 | 748 | 1,791 | 2,483 | 63.76 |
| No children | 13,753 | 1,723 | 4,601 | 5,922 | 1,486 | 21 | - | - | 40.57 |
| One child | 3,184 | 30 | 84 | 176 | 348 | 567 | 1,511 | 468 | 100.78 |
| Two or more children | 2,611 | 8 | 13 | 43 | 92 | 160 | 280 | 2,015 | 140.79 |

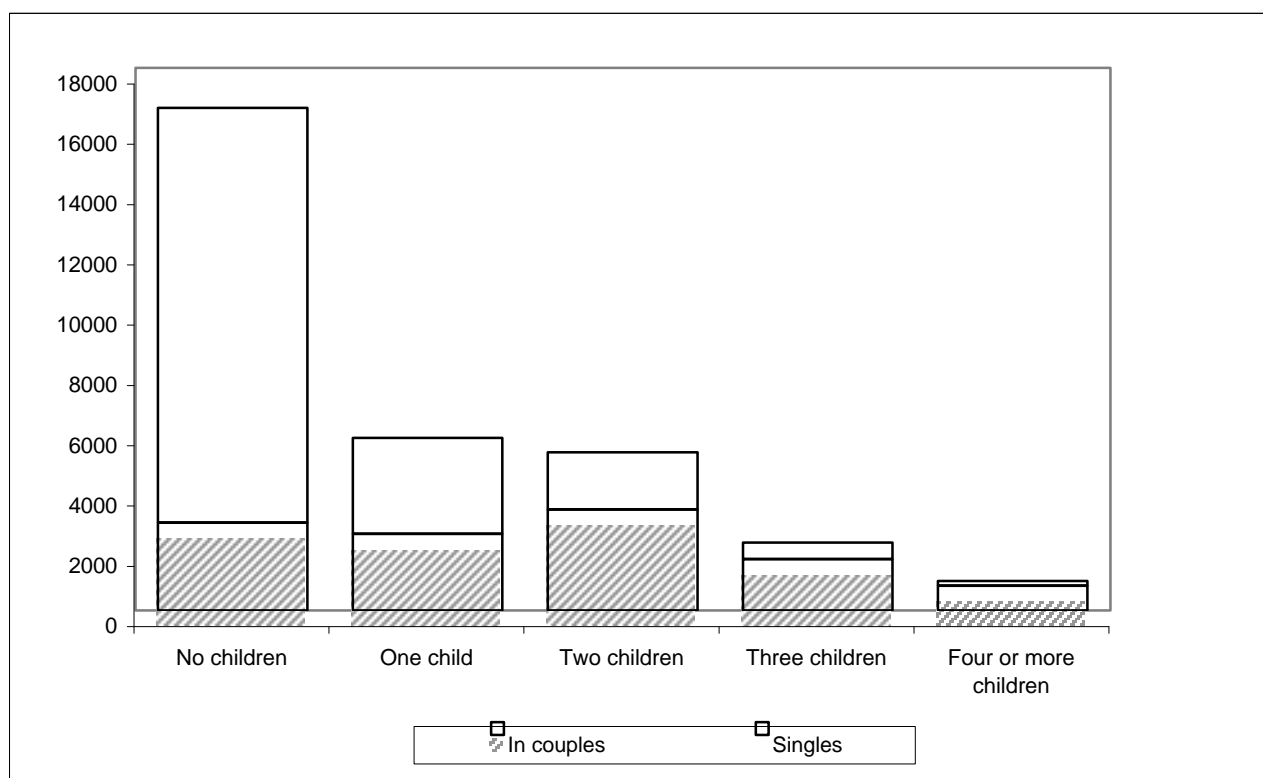
Chart 5 : Recipients by number of children in family, and by family type.

Table 4.1 : Gross weekly earnings of recipients, by family type.*United Kingdom*

| | All cases | Gross weekly earnings of recipients | | | | | | Average gross earnings £ per week |
|-------------------------|-----------|-------------------------------------|--------------------|---------------------|----------------------|----------------------|---------------------|--------------------------------------|
| | | Under £40.00 | £40.00 - £79.99 | £80.00 - £119.99 | £120.00 - £159.99 | £160.00 - £199.99 | £200.00 and over | |
| All recipients | 30,863 | 2,017 | 6,938 | 7,153 | 5,069 | 4,511 | 5,175 | 130.30 |
| In couples | 11,315 | 1,140 | 2,392 | 1,958 | 1,339 | 1,494 | 2,992 | 141.64 |
| Singles | 19,548 | 877 | 4,546 | 5,195 | 3,730 | 3,017 | 2,183 | 123.73 |
| With children | 14,195 | 984 | 2,933 | 2,861 | 1,830 | 1,760 | 3,827 | 146.73 |
| In couples | 8,400 | 722 | 1,616 | 1,356 | 962 | 1,132 | 2,612 | 152.85 |
| Singles | 5,795 | 262 | 1,317 | 1,505 | 868 | 628 | 1,215 | 137.87 |
| Without children | 16,668 | 1,033 | 4,005 | 4,292 | 3,239 | 2,751 | 1,348 | 116.30 |
| In couples | 2,915 | 418 | 776 | 602 | 377 | 362 | 380 | 109.34 |
| Singles | 13,753 | 615 | 3,229 | 3,690 | 2,862 | 2,389 | 968 | 117.77 |

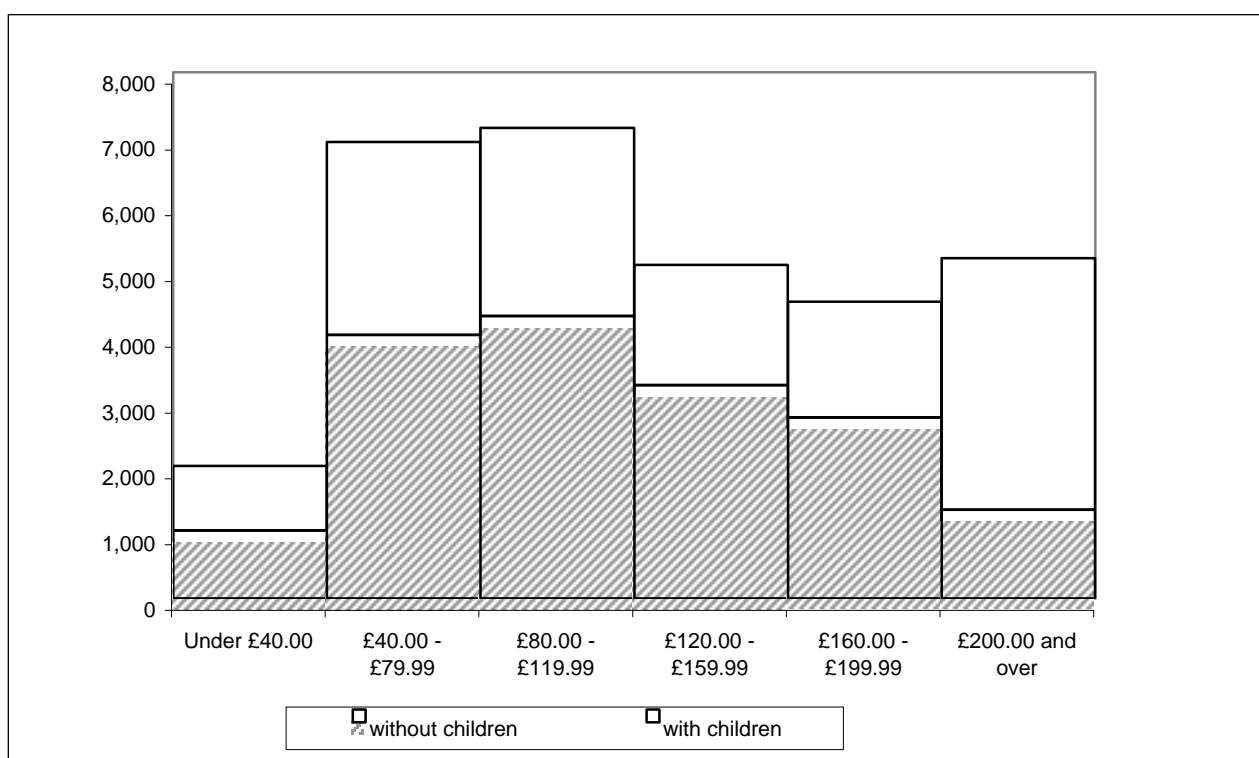
Chart 6 : Recipients by gross weekly earnings, and by whether with children.

Table 4.2 : Recipients whose family incomes include social security benefits which are brought to account, by family type.

United Kingdom

| | All recipients | In couples | | Singles |
|--|----------------|-------------------|-----------------|---------|
| | | To DPTC recipient | To partner only | |
| Pensions: | | | | |
| Retirement pension | 276 | 49 | 171 | 56 |
| Widow's benefit | 134 | - | - | 134 |
| War pension | 49 | 39 | | 10 |
| Unemployment related benefits: | | | | |
| Jobseeker's allowance | 56 | - | 56 | - |
| Sickness and disability benefits: | | | | |
| Incapacity benefit | 880 | - | 880 | - |
| Severe disablement allowance | 314 | - | 314 | - |
| Industrial injuries disablement benefit | 681 | 435 | 44 | 202 |
| War disablement pension | 163 | 116 | 14 | 33 |
| Carer benefits: | | | | |
| Invalid care allowance | 1,087 | 37 | 994 | 56 |
| Others: | 30 | 7 | | 23 |

Note: Certain benefits are excluded as they are not brought to account when calculating the level of award. Examples are Child benefit, Housing benefit, Council tax benefit and Disability living allowance.

Table 4.3 : Recipients whose families receive other income which is brought to account, by family type.

United Kingdom

| | All recipients | In couples | Singles |
|-------------------------|----------------|------------|---------|
| All cases | 1,333 | 756 | 577 |
| Benefits in kind | 46 | 21 | 25 |
| Rent and others | 1,285 | 738 | 547 |
| With children | 659 | 437 | 222 |
| Benefits in kind | 15 | 9 | 6 |
| Rent and others | 644 | 428 | 216 |
| Without children | 674 | 319 | 355 |
| Benefits in kind | 31 | 12 | 19 |
| Rent and others | 641 | 310 | 331 |

Section 5 : Regional analysis

This section shows the number of recipients in each country of the United Kingdom, and in each Government Office Region, and the average weekly value of the awards.

Previous issues of this publication have also shown the number of recipients in each local authority and parliamentary constituency. These figures will now be included instead in "Working Families' and Disabled Person's Tax Credit Statistics: Geographical analyses", which will be published in January 2002.

For each recipient, the country and region has been derived from the postcode recorded for the recipient, and used as part of the correspondence address. Each postcode was matched against the 2001 Version A Postcode Directory supplied by the Office for National Statistics.

Not all recipients have complete and accurate postcodes recorded. Each case is however allocated to a country, if necessary based on the rest of the address. Recipients in England are allocated to a region if the postcode, or the element present, is sufficient to do so with certainty.

Note that the number of recipients in Great Britain is not exactly the same as the number dealt with by the Great Britain tax credit office shown in Section 1.

Table 5.1 Recipients in each Government Office Region, by employment status and family type.

| | All recipients | | | Employees | | | Self employed ¹ | | |
|--------------------------|----------------|------------|---------|-----------|------------|---------|----------------------------|------------|---------|
| | All | In couples | Singles | All | In couples | Singles | All | In couples | Singles |
| United Kingdom | 30,863 | 11,315 | 19,548 | 26,450 | 8,581 | 17,869 | 4,413 | 2,734 | 1,679 |
| England | 23,393 | 8,732 | 14,661 | 19,969 | 6,611 | 13,358 | 3,424 | 2,121 | 1,303 |
| North East | 1,911 | 752 | 1,159 | 1,632 | 576 | 1,056 | 279 | 176 | 103 |
| North West | 4,708 | 1,690 | 3,018 | 4,008 | 1,244 | 2,764 | 700 | 446 | 254 |
| Yorkshire and the Humber | 2,974 | 1,207 | 1,767 | 2,547 | 938 | 1,609 | 427 | 269 | 158 |
| East Midlands | 2,137 | 906 | 1,231 | 1,820 | 696 | 1,124 | 317 | 210 | 107 |
| West Midlands | 2,869 | 1,113 | 1,756 | 2,498 | 867 | 1,631 | 371 | 246 | 125 |
| Eastern | 1,835 | 671 | 1,164 | 1,561 | 512 | 1,049 | 274 | 159 | 115 |
| London | 1,656 | 466 | 1,190 | 1,459 | 372 | 1,087 | 197 | 94 | 103 |
| South East | 2,577 | 855 | 1,722 | 2,215 | 644 | 1,571 | 362 | 211 | 151 |
| South West | 2,715 | 1,068 | 1,647 | 2,219 | 758 | 1,461 | 496 | 310 | 186 |
| Region unknown | 11 | 4 | 7 | 10 | 4 | 6 | 1 | - | 1 |
| Wales | 2,501 | 981 | 1,520 | 2,098 | 752 | 1,346 | 403 | 229 | 174 |
| Scotland | 2,924 | 855 | 2,069 | 2,640 | 688 | 1,952 | 284 | 167 | 117 |
| Northern Ireland | 2,045 | 747 | 1,298 | 1,743 | 530 | 1,213 | 302 | 217 | 85 |

Table 5.2 Average weekly award for recipients in each Government Office Region, by employment status and family type.*£ per week*

| | All recipients | | | Employees | | | Self employed ¹ | | |
|--------------------------|----------------|------------|---------|-----------|------------|---------|----------------------------|------------|---------|
| | All | In couples | Singles | All | In couples | Singles | All | In couples | Singles |
| United Kingdom | 74.77 | 93.78 | 63.76 | 69.88 | 86.27 | 62.00 | 104.08 | 117.33 | 82.50 |
| England | 74.06 | 93.56 | 62.45 | 69.10 | 86.23 | 60.62 | 102.97 | 116.41 | 81.13 |
| North East | 73.44 | 89.02 | 63.33 | 69.11 | 82.79 | 61.65 | 98.77 | 109.42 | 80.56 |
| North West | 78.09 | 97.20 | 67.38 | 73.52 | 89.84 | 66.18 | 104.22 | 117.73 | 80.49 |
| Yorkshire and The Humber | 76.13 | 92.47 | 64.98 | 71.06 | 85.28 | 62.77 | 106.43 | 117.55 | 87.49 |
| East Midlands | 76.19 | 96.58 | 61.18 | 71.34 | 90.36 | 59.57 | 104.02 | 117.20 | 78.16 |
| West Midlands | 73.75 | 92.45 | 61.90 | 69.13 | 85.78 | 60.28 | 104.82 | 115.94 | 82.95 |
| Eastern | 71.47 | 91.11 | 60.15 | 65.78 | 82.12 | 57.80 | 103.88 | 120.04 | 81.54 |
| London | 69.92 | 93.17 | 60.81 | 66.78 | 87.81 | 59.59 | 93.14 | 114.37 | 73.77 |
| South East | 68.89 | 91.10 | 57.86 | 63.56 | 82.46 | 55.82 | 101.50 | 117.49 | 79.15 |
| South West | 73.12 | 94.67 | 59.14 | 66.37 | 86.21 | 56.08 | 103.30 | 115.37 | 83.19 |
| Wales | 79.34 | 94.32 | 69.68 | 74.78 | 88.08 | 67.34 | 103.13 | 114.79 | 87.79 |
| Scotland | 71.52 | 84.97 | 65.96 | 68.25 | 78.69 | 64.56 | 101.93 | 110.83 | 89.23 |
| Northern Ireland | 81.94 | 105.66 | 68.29 | 75.42 | 94.07 | 67.27 | 119.56 | 133.96 | 82.82 |

1. Recipient has self employment income source and no source of income as an employee

Table 6.1 : Main qualifying benefit of recipients of awards starting between October 1999 and April 2001, by type of award.

| | <i>United Kingdom</i> | |
|--|-----------------------|-----------------------------|
| | All cases | Average award £ per week |
| All awards | | |
| All qualifying benefits | 98,667 | 72.69 |
| Disability living allowance - higher rate & analogous benefits | 42,283 | 69.49 |
| Disability living allowance - lower rate | 20,559 | 63.48 |
| Severe disablement benefit | 6,973 | 60.21 |
| Disability premium in IS/JSA | 13,221 | 92.13 |
| Incapacity benefit (higher rate short term) | 3,221 | 83.32 |
| Incapacity benefit (long term) | 12,163 | 82.48 |
| Other ¹ | 247 | 77.88 |
| New awards ² | | |
| All qualifying benefits | 25,043 | 71.79 |
| Disability living allowance - higher rate & analogous benefits | 9,409 | 65.11 |
| Disability living allowance - lower rate | 4,874 | 64.74 |
| Severe disablement benefit | 1,782 | 61.64 |
| Disability premium in IS/JSA | 4,067 | 92.37 |
| Incapacity benefit (higher rate short term) | 1,138 | 81.11 |
| Incapacity benefit (long term) | 3,713 | 77.55 |
| Other ¹ | 60 | 67.42 |
| Renewal awards ³ | | |
| All qualifying benefits | 67,801 | 73.46 |
| Disability living allowance - higher rate & analogous benefits | 29,825 | 71.16 |
| Disability living allowance - lower rate | 14,325 | 63.39 |
| Severe disablement benefit | 4,903 | 59.81 |
| Disability premium in IS/JSA | 8,632 | 92.47 |
| Incapacity benefit (higher rate short term) | 1,970 | 84.86 |
| Incapacity benefit (long term) | 7,983 | 84.94 |
| Other ¹ | 163 | 82.83 |
| Repeat awards ⁴ | | |
| All qualifying benefits | 5,823 | 67.58 |
| Disability living allowance - higher rate & analogous benefits | 3,049 | 66.66 |
| Disability living allowance - lower rate | 1,360 | 59.91 |
| Severe disablement benefit | 288 | 58.10 |
| Disability premium in IS/JSA | 522 | 84.74 |
| Incapacity benefit (higher rate short term) | 113 | 78.62 |
| Incapacity benefit (long term) | 467 | 79.74 |
| Other ¹ | 24 | 70.38 |

¹Disability premium in Housing benefit or Council tax benefit, plus Fast-Track entrants.

²New awards are those where the recipient has not received DWA or DPTC within the previous 2 years.

³Renewal awards are those following on immediately from a previous award, without a break.

⁴Repeat awards are those where the recipient had a previous award but there has been a break between awards of up to 2 years.

**Table 6.2 : Recipients of awards starting between October 1999 and July 2001
by type of award and family type.**

| <i>United Kingdom</i> | | | | | |
|------------------------------------|-----------|---------|--------|---------|--------|
| | All Cases | Couples | | Singles | |
| | | Male | Female | Male | Female |
| All awards | 98,667 | 30,135 | 6,548 | 26,474 | 35,510 |
| New awards ¹ | 25,043 | 7,308 | 2,070 | 6,224 | 9,441 |
| Renewal awards ² | 67,801 | 21,229 | 4,053 | 18,473 | 24,046 |
| Repeat awards ³ | 5,823 | 1,598 | 425 | 1,777 | 2,023 |

¹New awards are those where the recipient has not received DWA or DPTC within the previous 2 years.

²Renewal awards are those following on immediately from a previous award, without a break.

³Repeat awards are those where the recipient had a previous award but there has been a break between awards of up to 2 years.

Figures for DWA awards in Great Britain starting between November 1992 and September 1999 appear in the enquiry statistics for October 1999.

Table 6.3 : Disallowances between October 1999 and July 2001 by reason of disallowance.*United Kingdom*

| | Number of disallowances |
|---|--------------------------------|
| All disallowances | 18,457 |
| All A codes | 93 |
| A1 Claimant was not in UK | 87 |
| A2 Claimant was not normally living in UK | - |
| A3 Partner not normally living in UK | - |
| A4 All claimants earnings from outside UK | - |
| All C codes | 193 |
| C1 Claimant's capital exceeds £16,000 | 149 |
| C2 Claimant and partner's capital exceeds £16,000 | 31 |
| C3 Failure to provide information about value of claimant and partner's capital | - |
| C4 Failure to provide information about value of claimant's capital | 10 |
| All D codes | 3,996 |
| D1 Claimant not doing paid work for an average of 16 hours a week or more | 1,323 |
| D2 Claimant not in paid work | 1,313 |
| D5 Claimant not engaged in remunerative work in relevant weeks | 1,081 |
| D7 Claimant not normally engaged in paid work | 253 |
| D9 Claimant not treated as in paid work - voluntary | - |
| D11 Claimant not treated as in paid work - charity | - |
| D13 Claimant working for voluntary body - expenses | - |
| D15 Claimant could not be treated as in paid work on the information available | 24 |
| All E codes | 3,868 |
| E1 Claimant's income higher than the level at which DPTC would become payable | 3,477 |
| E2 Claimant's entitlement less than the minimum amount of DPTC | 83 |
| E3 On the information available the claimant or partner's income was higher then the level at which DPTC would become payable | 308 |
| All other codes | |
| G1 Any disallowance not covered by other categories | 298 |
| I DPTC claim made more than 6 weeks before DPTC end date | 2,815 |
| J1 Qualifying benefit test not satisfied | 4,844 |
| K1 Disability test not satisfied | 4,823 |
| L Lapsed claim | 32 |
| W Claimant has withdrawn claim | 1,235 |

Figures for DWA disallowances in Great Britain occurring between November 1992 and September 1999 appear in the enquiry statistics for October 1999.

Table 6.4 : Recipients of renewal and repeat awards starting between October 1999 and April by disability type and age.

United Kingdom

| | All ages | Under 30 | 30 - 39 | 40 - 49 | 50 - 59 | 60 and over |
|--|----------|----------|---------|---------|---------|-------------|
| Renewal awards ¹ | | | | | | |
| Mental disabilities - treatment | 5,105 | 621 | 1,986 | 1,700 | 752 | 46 |
| Mental disabilities - day to day things | 6,282 | 1,834 | 2,104 | 1,504 | 759 | 81 |
| Mental disabilities - getting on with people | 5,279 | 1,143 | 2,000 | 1,450 | 647 | 39 |
| Fits and comas | 513 | 110 | 223 | 121 | 53 | 6 |
| Exhaustion and pain | 19,258 | 1,908 | 6,090 | 6,463 | 4,152 | 645 |
| Seeing | 2,023 | 409 | 741 | 548 | 280 | 45 |
| Hearing | 1,117 | 214 | 401 | 286 | 188 | 28 |
| Communicating | 1,923 | 552 | 631 | 437 | 263 | 40 |
| Getting around | 2,729 | 256 | 802 | 937 | 610 | 124 |
| Using your hands | 3,036 | 603 | 1,029 | 883 | 457 | 64 |
| Reaching with your arms | 453 | 61 | 139 | 137 | 105 | 11 |
| Repeat awards ² | | | | | | |
| Mental disabilities - treatment | 455 | 67 | 181 | 147 | 60 | - |
| Mental disabilities - day to day things | 505 | 160 | 177 | 111 | 52 | 5 |
| Mental disabilities - getting on with people | 466 | 112 | 183 | 119 | 52 | - |
| Fits and comas | 42 | 19 | 14 | 9 | - | - |
| Exhaustion and pain | 1,279 | 198 | 407 | 428 | 227 | 19 |
| Seeing | 209 | 63 | 82 | 48 | 16 | - |
| Hearing | 113 | 23 | 48 | 25 | 11 | 6 |
| Communicating | 180 | 59 | 68 | 30 | 18 | 5 |
| Getting around | 189 | 35 | 51 | 55 | 48 | - |
| Using your hands | 300 | 90 | 95 | 78 | 37 | - |
| Reaching with your arms | 56 | 16 | 12 | 17 | 11 | - |

¹Renewal awards are those following on immediately from a previous award, without a break.

²Repeat awards are those where the recipient had a previous award but there has been a break between awards of up to 2 years.

Figures for DWA awards in Great Britain starting between November 1992 and September 1999 appear in the enquiry statistics for October 1999.

Claimants may have one or more type(s) of disability. This table records all declared and confirmed disability types for those claimants who complete form DPTC2 prior to renewal/ repeat awards.

£5.00