

---

**Disabled Person's Tax Credit  
Statistics**

**Quarterly Enquiry**

**United Kingdom  
July 2000**

---

Contact point for enquiries and requests for further copies:-

Analytical Services Division (TCASP)

Inland Revenue

Room 39A - New Wing

Somerset House

London

WC2R 1LB

☎ : 020 - 7438 6275

Fax : 020 - 7438 6764

E-mail : [gp1sed.ir.sh@gtnet.gov.uk](mailto:gp1sed.ir.sh@gtnet.gov.uk)

This, and issues back to October 1999 can be found on the Inland Revenue web site : [\*\*www.inlandrevenue.gov.uk\*\*](http://www.inlandrevenue.gov.uk)

The October 2000 issue is due to be published on the web site on Tuesday 8th March 2001.

#### A NATIONAL STATISTICS PUBLICATION

National Statistics are produced to a high professional standards set out in the National Statistics Code of Practice. They undergo regular quality assurance reviews to ensure that they meet customer needs. They are produced free from any political interference.

For general enquiries about National Statistics, contact the National Statistics Public Enquiry Service on

☎ : 020 - 7533 5888

minicom : 01633 812399

E-mail : [info@statistics.gov.uk](mailto:info@statistics.gov.uk)

Fax : 01633 652747

Letters : room DG/18, 1 Drummond Gate, LONDON, SW1V 2QQ

You can also find National Statistics on the internet - go to [\*\*www.statistics.gov.uk\*\*](http://www.statistics.gov.uk)

# Disabled Person's Tax Credit Statistics

## Quarterly Enquiry

### United Kingdom

July 2000

| <b>Contents</b>                             | <b>PAGE</b> |
|---|-------------|
| Introduction .....                          | 1           |
| Main findings .....                         | 1           |
| List of tables .....                        | 2           |
| Section 1 : Time series .....               | 4           |
| Section 2 : Family type .....               | 7           |
| Section 3 : Amount of award .....           | 10          |
| Section 4 : Earnings and other income ..... | 12          |
| Section 5 : Geographical analysis .....     | 14          |
| Section 6 : Historical DPTC .....           | 28          |

## Introduction

Disabled Person's Tax Credit (DPTC) replaced Disability Working Allowance (DWA) from 5th October 1999. It is a tax credit available to people who are working at least sixteen hours a week and who have an illness or disability which puts them at a disadvantage in getting a job.

The tables cover awards current at 31st July 2000. Awards of both DPTC and DWA last for 26 weeks, so only DPTC awards were current at that date. Time series covering both DPTC and DWA are available only for awards made in Great Britain (excluding Northern Ireland).

The figures are based on a 100% scan of awards. They have been compiled four months after the reference date, by which time almost all awards current at the reference date have been processed and entered onto the computer system. The tables cover awards made in the United Kingdom, unless otherwise stated. To ensure that information about individuals is not disclosed, most cells containing less than five cases are shown as '-', and some other cells are bracketed together.

Problems have been discovered with the classification of recipients between employees and self-employed. The publication of figures using this classification has therefore been suspended.

## Main Findings

There were 25,326 DPTC awards current at 31st July 2000, 8 per cent higher than the number of DPTC at 30th April 2000.

The average DPTC award was £71.86 per week.

15,761 awards were to single adults (including lone parents), with an average value of £60.03 per week. 9,565 were to couples with an average value of £91.36 a week.

45 per cent of recipients had children. Their average weekly award was £105.52, compared with £44.21 for recipients with no children.

In 42 per cent of the cases higher rate Disability living allowance, or an analogous benefit, was the main qualifying benefit for DPTC. Lower rate Disability living allowance was the main qualifying benefit for a further 21 per cent.

For families with children, 61% of DPTC awards were over £100 per week.

The average gross weekly earnings of the main earner was £118.63.

## List of Tables

### Section 1 : Time series

- Table 1.1      DWA/DPTC awards by family type, January 1993 - July 2000.
- Chart 1        DWA/DPTC awards by family type, Great Britain, January 1993 - July 2000.
- Table 1.2      Average DWA/DPTC award by family type, January 1993 - July 2000.
- Chart 2        Average DWA/DPTC award by family type, Great Britain, January 1993 - July 2000.

### Section 2 : Family type

- Table 2.1      Family type and age by sex of recipient.
- Chart 3        Age of recipient and family type.
- Table 2.2      Family type, number and average weekly amount of award.
- Chart 4        Family type.
- Table 2.3      Family type and main qualifying benefit, number and average weekly amount of award.

### Section 3 : Amount of award

- Table 3.1      Family type by weekly amount of award.
- Table 3.2      Family size and type by weekly amount of award.
- Chart 5        Number of children by family type.

**Section 4 : Earnings and other income**

- Table 4.1      Family type by gross weekly earnings of main earner.
- Chart 6        Gross weekly earnings of main earner and family type
- Table 4.2      Other benefits in receipt at the time of application by family type.
- Table 4.3      Other income in receipt at the time of application by family type.

**Section 5 : Geographical analysis**

- Table 5.1      Number of awards by Government Office Region and family type.
- Table 5.2      Average award by Government Office Region and family type.
- Table 5.3      Number of awards by local authority.
- Table 5.4      Number of awards by parliamentary constituency.

**Section 6 : Historical DPTC**

- Table 6.1      Type and main qualifying benefit of all awards starting between October 1999 and July 2000.
- Table 6.2 :     Awards starting between October 1999 and July 2000 by type of award and family type.
- Table 6.3 :     Disallowances between October 1999 and July 2000 by reason of disallowance.
- Table 6.4 :     Renewal and repeat awards starting between October 1999 and July 2000 by disability type and age of claimant.

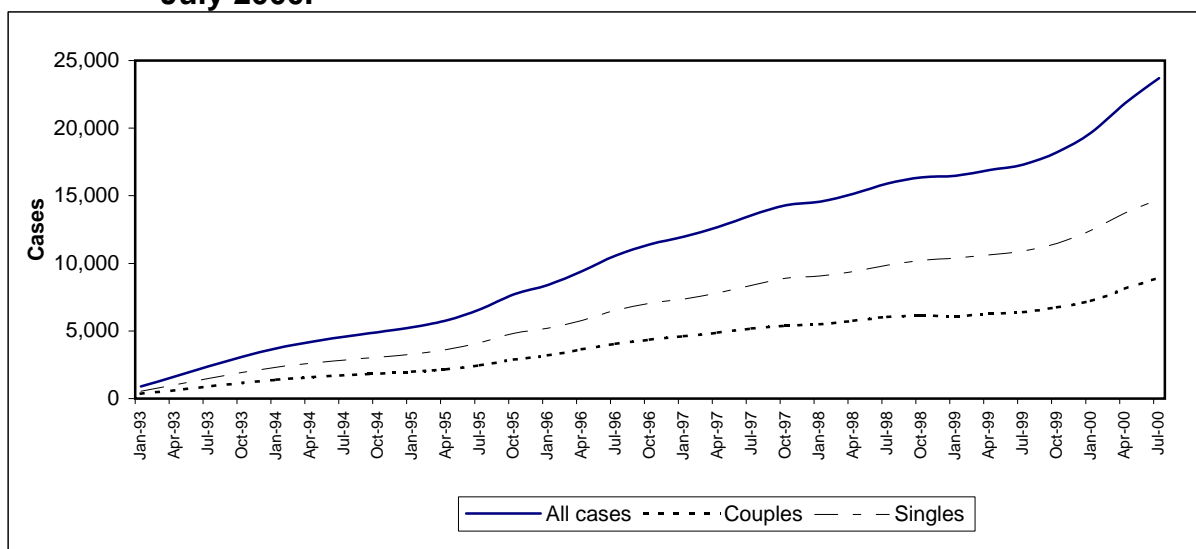
## **Section 1 : Time series**

This section shows the number of awards in Great Britain, and their average weekly value, for each quarter back to January 1993. Figures for the United Kingdom are shown from October 1999.

The figures for April 2000 are slightly different to those published last time, as they account of awards made after the scan for the previous publication and then backdated.

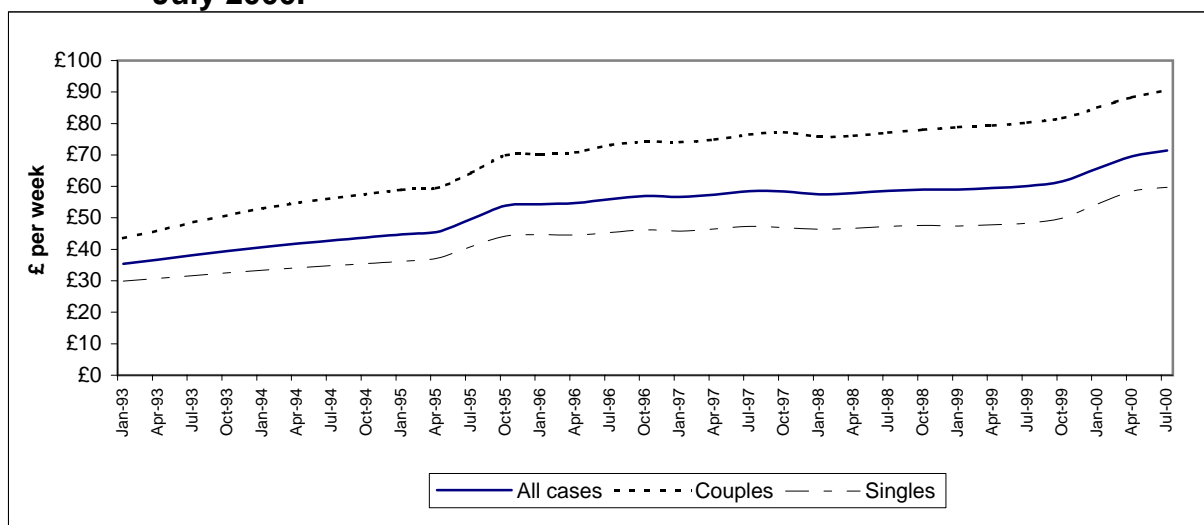
**Table 1.1 : DWA/DPTC awards by family type, January 1993 - July 2000.**

|        | All cases     |                | Couples       |                | Singles       |                |
|--------|---------------|----------------|---------------|----------------|---------------|----------------|
|        | Great Britain | United Kingdom | Great Britain | United Kingdom | Great Britain | United Kingdom |
| Jan-93 | 904           | -              | 361           | -              | 543           | -              |
| Jan-94 | 3,722         | -              | 1,392         | -              | 2,330         | -              |
| Jan-95 | 5,277         | -              | 1,990         | -              | 3,287         | -              |
| Apr-95 | 5,782         | -              | 2,152         | -              | 3,630         | -              |
| Jul-95 | 6,615         | -              | 2,465         | -              | 4,150         | -              |
| Oct-95 | 7,719         | -              | 2,899         | -              | 4,820         | -              |
| Jan-96 | 8,406         | -              | 3,186         | -              | 5,220         | -              |
| Apr-96 | 9,416         | -              | 3,638         | -              | 5,778         | -              |
| Jul-96 | 10,577        | -              | 4,049         | -              | 6,528         | -              |
| Oct-96 | 11,409        | -              | 4,359         | -              | 7,050         | -              |
| Jan-97 | 11,979        | -              | 4,620         | -              | 7,359         | -              |
| Apr-97 | 12,689        | -              | 4,881         | -              | 7,808         | -              |
| Jul-97 | 13,575        | -              | 5,191         | -              | 8,384         | -              |
| Oct-97 | 14,306        | -              | 5,405         | -              | 8,901         | -              |
| Jan-98 | 14,564        | -              | 5,500         | -              | 9,064         | -              |
| Apr-98 | 15,145        | -              | 5,753         | -              | 9,392         | -              |
| Jul-98 | 15,910        | -              | 6,040         | -              | 9,870         | -              |
| Oct-98 | 16,353        | -              | 6,125         | -              | 10,228        | -              |
| Jan-99 | 16,483        | -              | 6,093         | -              | 10,390        | -              |
| Apr-99 | 16,904        | -              | 6,263         | -              | 10,641        | -              |
| Jul-99 | 17,305        | -              | 6,400         | -              | 10,905        | -              |
| Oct-99 | 18,222        | 19,445         | 6,738         | 7,207          | 11,484        | 12,238         |
| Jan-00 | 19,678        | 21,017         | 7,232         | 7,740          | 12,446        | 13,277         |
| Apr-00 | 21,853        | 23,373         | 8,132         | 8,725          | 13,721        | 14,648         |
| Jul-00 | 23,706        | 25,326         | 8,947         | 9,565          | 14,759        | 15,761         |

**Chart 1 : DWA/DPTC awards by family type, Great Britain, January 1993 - July 2000.**

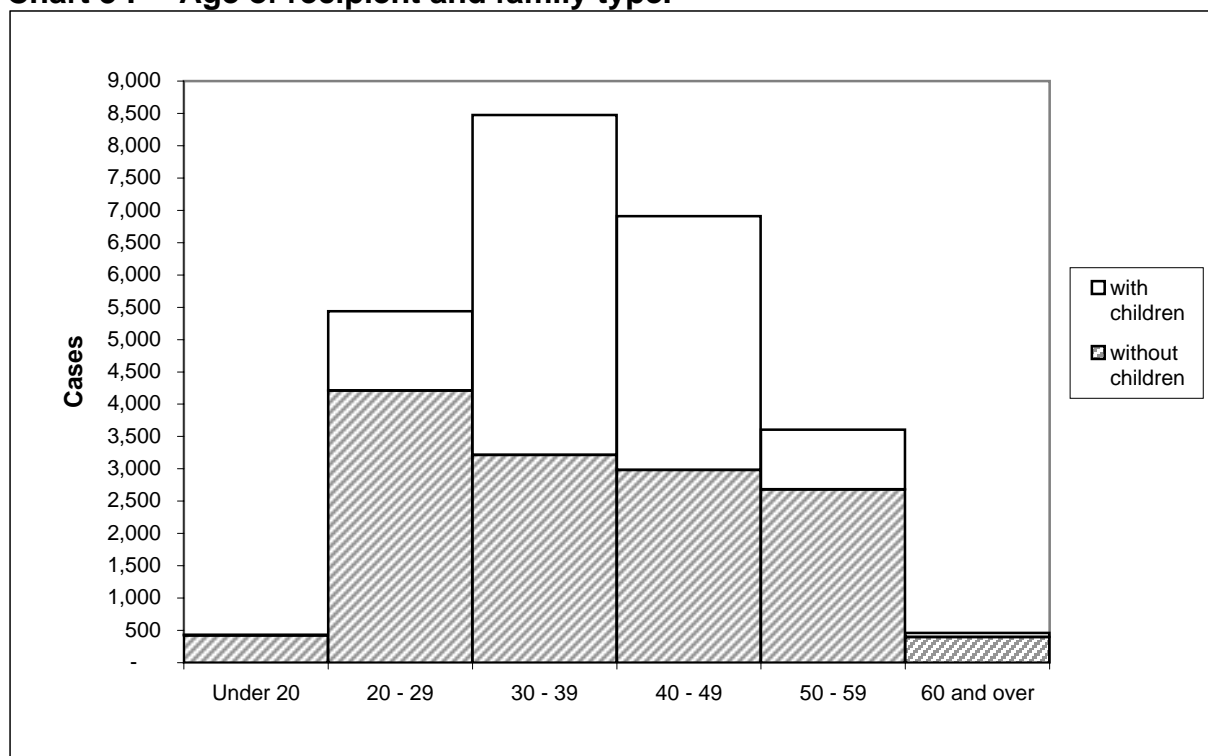
**Table 1.2 : Average DWA/DPTC award by family type, January 1993 - July 2000.**

|        | <i>£ per week</i> |                |               |                |               |                |
|--------|-------------------|----------------|---------------|----------------|---------------|----------------|
|        | All cases         |                | Couples       |                | Singles       |                |
|        | Great Britain     | United Kingdom | Great Britain | United Kingdom | Great Britain | United Kingdom |
| Jan-93 | 35.37             | -              | 43.59         | -              | 29.91         | -              |
| Jan-94 | 40.71             | -              | 53.03         | -              | 33.36         | -              |
| Jan-95 | 44.79             | -              | 58.93         | -              | 36.23         | -              |
| Apr-95 | 45.46             | -              | 59.43         | -              | 37.17         | -              |
| Jul-95 | 49.65             | -              | 64.32         | -              | 40.94         | -              |
| Oct-95 | 53.87             | -              | 69.90         | -              | 44.22         | -              |
| Jan-96 | 54.35             | -              | 70.25         | -              | 44.65         | -              |
| Apr-96 | 54.72             | -              | 70.84         | -              | 44.57         | -              |
| Jul-96 | 55.97             | -              | 73.10         | -              | 45.35         | -              |
| Oct-96 | 56.92             | -              | 74.22         | -              | 46.23         | -              |
| Jan-97 | 56.69             | -              | 74.06         | -              | 45.78         | -              |
| Apr-97 | 57.39             | -              | 74.89         | -              | 46.44         | -              |
| Jul-97 | 58.46             | -              | 76.47         | -              | 47.30         | -              |
| Oct-97 | 58.37             | -              | 77.22         | -              | 46.92         | -              |
| Jan-98 | 57.52             | -              | 75.83         | -              | 46.41         | -              |
| Apr-98 | 57.84             | -              | 76.08         | -              | 46.67         | -              |
| Jul-98 | 58.63             | -              | 77.10         | -              | 47.33         | -              |
| Oct-98 | 58.97             | -              | 77.98         | -              | 47.58         | -              |
| Jan-99 | 59.05             | -              | 78.89         | -              | 47.41         | -              |
| Apr-99 | 59.53             | -              | 79.38         | -              | 47.84         | -              |
| Jul-99 | 60.13             | -              | 80.31         | -              | 48.29         | -              |
| Oct-99 | 61.66             | 62.09          | 81.64         | 82.16          | 49.94         | 50.27          |
| Jan-00 | 65.69             | 66.21          | 85.05         | 85.87          | 54.43         | 54.76          |
| Apr-00 | 69.56             | 70.14          | 88.29         | 89.17          | 58.46         | 58.81          |
| Jul-00 | 71.39             | 71.86          | 90.57         | 91.36          | 59.76         | 60.03          |

**Chart 2 : Average DWA/DPTC award by family type, Great Britain, January 1993 - July 2000.**

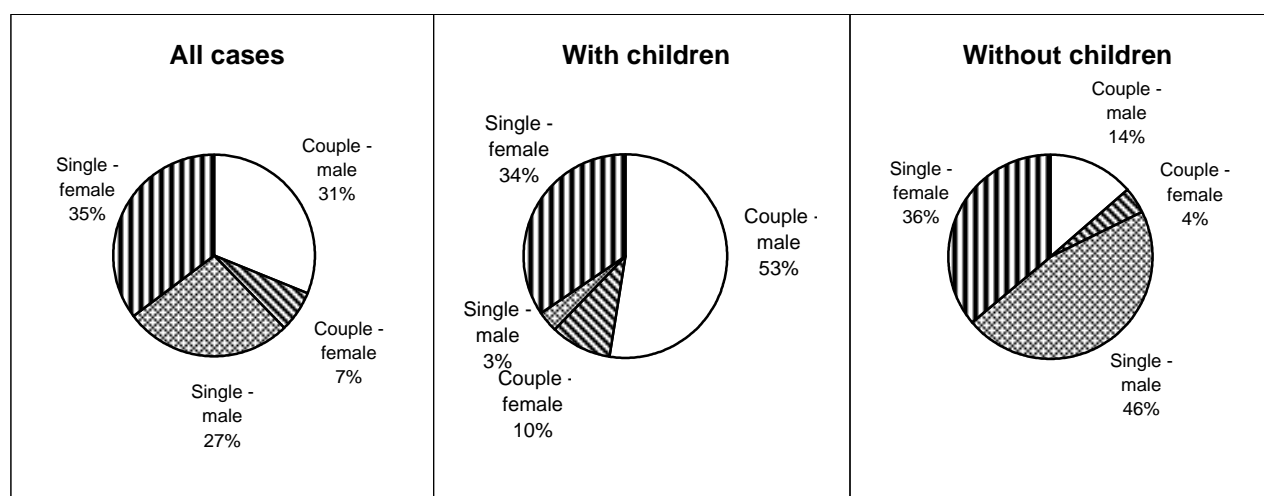
**Table 2.1 : Family type and age by sex of recipient.**

|                         | <i>United Kingdom</i> |        |    |        |    |
|-------------------------|-----------------------|--------|----|--------|----|
|                         | All cases             | Male   | %  | Female | %  |
| <b>All cases</b>        | 25,326                | 14,725 | 58 | 10,601 | 42 |
| Under 20                | 433                   | 243    | 56 | 190    | 44 |
| 20 - 29                 | 5,440                 | 3,047  | 56 | 2,393  | 44 |
| 30 - 39                 | 8,473                 | 4,760  | 56 | 3,713  | 44 |
| 40 - 49                 | 6,911                 | 4,048  | 59 | 2,863  | 41 |
| 50 - 59                 | 3,607                 | 2,216  | 61 | 1,391  | 39 |
| 60 and over             | 462                   | 411    | 89 | 51     | 11 |
| <b>With children</b>    | 11,423                | 6,393  | 56 | 5,030  | 44 |
| Under 20                | 13                    | 570    | 46 | 674    | 54 |
| 20 - 29                 | 1,231                 |        |    |        |    |
| 30 - 39                 | 5,259                 | 2,767  | 53 | 2,492  | 47 |
| 40 - 49                 | 3,928                 | 2,325  | 59 | 1,603  | 41 |
| 50 - 59                 | 925                   | 671    | 73 | 254    | 27 |
| 60 and over             | 67                    | 60     | 90 | 7      | 10 |
| <b>Without children</b> | 13,903                | 8,332  | 60 | 5,571  | 40 |
| Under 20                | 420                   | 2,720  | 59 | 1,909  | 41 |
| 20 - 29                 | 4,209                 |        |    |        |    |
| 30 - 39                 | 3,214                 | 1,993  | 62 | 1,221  | 38 |
| 40 - 49                 | 2,983                 | 1,723  | 58 | 1,260  | 42 |
| 50 - 59                 | 2,682                 | 1,545  | 58 | 1,137  | 42 |
| 60 and over             | 395                   | 351    | 89 | 44     | 11 |

**Chart 3 : Age of recipient and family type.**

**Table 2.2 : Family type, number and average weekly amount of award.**

| <i>United Kingdom</i>   |                  |                                     |
|-------------------------|------------------|-------------------------------------|
|                         | <b>All cases</b> | <b>Average award<br/>£ per week</b> |
| <b>All cases</b>        | 25,326           | 71.86                               |
| Couple - male           | 7,905            | 94.09                               |
| Couple - female         | 1,660            | 78.39                               |
| Single - male           | 6,820            | 43.86                               |
| Single - female         | 8,941            | 72.36                               |
| <b>With children</b>    | 11,423           | 105.52                              |
| Couple - male           | 5,995            | 104.17                              |
| Couple - female         | 1,111            | 89.35                               |
| Single - male           | 398              | 101.71                              |
| Single - female         | 3,919            | 112.55                              |
| <b>Without children</b> | 13,903           | 44.21                               |
| Couple - male           | 1,910            | 62.46                               |
| Couple - female         | 549              | 56.20                               |
| Single - male           | 6,422            | 40.28                               |
| Single - female         | 5,022            | 40.99                               |

**Chart 4 : Family type.**

**Table 2.3 : Family type and main qualifying benefit, number and average weekly amount of award.**

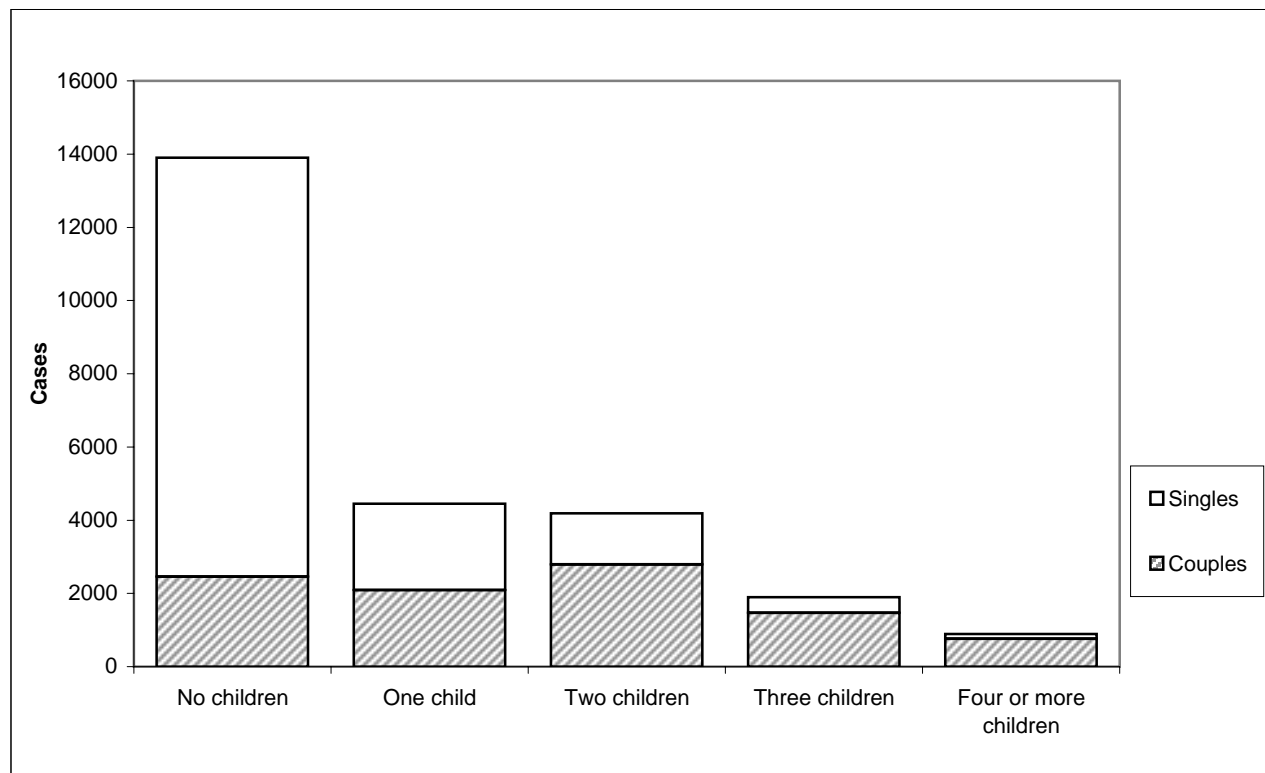
|  | <i>United Kingdom</i> |   |
|--|-----------------------|---|
|  | <b>All cases</b>      | <b>Average<br/>award<br/>£ per week</b> |
| <b>All cases</b>   | 25,326                | 71.86                                   |
| Higher rate Disability living allowance and analogous benefits | 10,744                | 68.84                                   |
| Lower rate Disability living allowance                         | 5,231                 | 62.75                                   |
| Severe disablement benefit                                     | 1,832                 | 60.34                                   |
| Disability premium in Income support/Jobseeker's allowance     | 3,396                 | 90.29                                   |
| Disability premium in Housing benefit                          | 36                    | 82.61                                   |
| Disability premium in Council tax benefit                      | 16                    | 85.68                                   |
| Incapacity benefit (higher rate short term)                    | 867                   | 82.01                                   |
| Incapacity benefit (long term)                                 | 3,204                 | 81.01                                   |
| <b>With children</b>   | 11,423                | 105.51                                  |
| Higher rate Disability living allowance and analogous benefits | 4,958                 | 98.98                                   |
| Lower rate Disability living allowance                         | 1,929                 | 100.39                                  |
| Severe disablement benefit                                     | 428                   | 113.33                                  |
| Disability premium in Income support/Jobseeker's allowance     | 1,918                 | 121.22                                  |
| Disability premium in Housing benefit                          | 19                    | 118.52                                  |
| Disability premium in Council tax benefit                      | 5                     | 126.05                                  |
| Incapacity benefit (higher rate short term)                    | 501                   | 106.21                                  |
| Incapacity benefit (long term)                                 | 1,665                 | 110.40                                  |
| <b>Without children</b>  | 13,903                | 44.21                                   |
| Higher rate Disability living allowance and analogous benefits | 5,786                 | 43.01                                   |
| Lower rate Disability living allowance                         | 3,302                 | 40.76                                   |
| Severe disablement benefit                                     | 1,404                 | 44.19                                   |
| Disability premium in Income support/Jobseeker's allowance     | 1,478                 | 50.16                                   |
| Disability premium in Housing benefit                          | 17                    | 42.47                                   |
| Disability premium in Council tax benefit                      | 11                    | 67.33                                   |
| Incapacity benefit (higher rate short term)                    | 366                   | 48.89                                   |
| Incapacity benefit (long term)                                 | 1,539                 | 49.21                                   |

**Table 3.1 : Family type by weekly amount of award.***United Kingdom*

|                         | All cases | Weekly amount of award |                    |                    |                    |                    |                      |                     |
|-------------------------|-----------|------------------------|--------------------|--------------------|--------------------|--------------------|----------------------|---------------------|
|                         |           | Under<br>£20.00        | £20.00 -<br>£39.99 | £40.00 -<br>£59.99 | £60.00 -<br>£79.99 | £80.00 -<br>£99.99 | £100.00 -<br>£119.99 | £120.00<br>and over |
| <b>All cases</b>        |           |                        |                    |                    |                    |                    |                      |                     |
| <b>All cases</b>        | 25,326    | 1,606                  | 4,887              | 7,064              | 2,240              | 2,550              | 2,863                | 4,116               |
| Male                    | 14,725    | 983                    | 2,934              | 3,959              | 1,474              | 1,656              | 1,399                | 2,320               |
| Female                  | 10,601    | 623                    | 1,953              | 3,105              | 766                | 894                | 1,464                | 1,796               |
| <b>Couples</b>          |           |                        |                    |                    |                    |                    |                      |                     |
| <b>Couples</b>          | 9,565     | 444                    | 844                | 1,110              | 1,326              | 1,880              | 1,438                | 2,523               |
| Male                    | 7,905     | 310                    | 612                | 869                | 1,055              | 1,587              | 1,241                | 2,231               |
| Female                  | 1,660     | 134                    | 232                | 241                | 271                | 293                | 197                  | 292                 |
| <b>Singles</b>          |           |                        |                    |                    |                    |                    |                      |                     |
| <b>Singles</b>          | 15,761    | 1,162                  | 4,043              | 5,954              | 914                | 670                | 1,425                | 1,593               |
| Male                    | 6,820     | 673                    | 2,322              | 3,090              | 419                | 69                 | 158                  | 89                  |
| Female                  | 8,941     | 489                    | 1,721              | 2,864              | 495                | 601                | 1,267                | 1,504               |
| <b>With children</b>    |           |                        |                    |                    |                    |                    |                      |                     |
| <b>All cases</b>        | 11,423    | 260                    | 518                | 811                | 1,184              | 1,671              | 2,863                | 4,116               |
| Male                    | 6,393     | 161                    | 344                | 548                | 700                | 921                | 1,399                | 2,320               |
| Female                  | 5,030     | 99                     | 174                | 263                | 484                | 750                | 1,464                | 1,796               |
| <b>Couples</b>          |           |                        |                    |                    |                    |                    |                      |                     |
| <b>Couples</b>          | 7,106     | 236                    | 445                | 649                | 814                | 1,001              | 1,438                | 2,523               |
| Male                    | 5,995     | 485                    | 528                | 658                | 852                | 1,241              | 2,231                |                     |
| Female                  | 1,111     | 196                    | 121                | 156                | 149                | 197                | 292                  |                     |
| <b>Singles</b>          |           |                        |                    |                    |                    |                    |                      |                     |
| <b>Singles</b>          | 4,317     | 24                     | 73                 | 162                | 370                | 670                | 1,425                | 1,593               |
| Male                    | 398       | 20                     | 20                 | 42                 | 69                 | 158                | 89                   |                     |
| Female                  | 3,919     | 77                     | 142                | 328                | 601                | 1,267              | 1,504                |                     |
| <b>Without children</b> |           |                        |                    |                    |                    |                    |                      |                     |
| <b>All cases</b>        | 13,903    | 1,346                  | 4,369              | 6,253              | 1,056              | 879                | -                    | -                   |
| Male                    | 8,332     | 822                    | 2,590              | 3,411              | 774                | 735                | -                    | -                   |
| Female                  | 5,571     | 524                    | 1,779              | 2,842              | 282                | 144                | -                    | -                   |
| <b>Couples</b>          |           |                        |                    |                    |                    |                    |                      |                     |
| <b>Couples</b>          | 2,459     | 208                    | 399                | 461                | 512                | 879                | -                    | -                   |
| Male                    | 1,910     | 437                    | 341                | 397                | 735                | -                  | -                    |                     |
| Female                  | 549       | 170                    | 120                | 115                | 144                | -                  | -                    |                     |
| <b>Singles</b>          |           |                        |                    |                    |                    |                    |                      |                     |
| <b>Singles</b>          | 11,444    | 1,138                  | 3,970              | 5,792              | 544                | -                  | -                    | -                   |
| Male                    | 6,422     | 2,975                  | 3,070              | 377                | -                  | -                  | -                    |                     |
| Female                  | 5,022     | 2,133                  | 2,722              | 167                | -                  | -                  | -                    |                     |

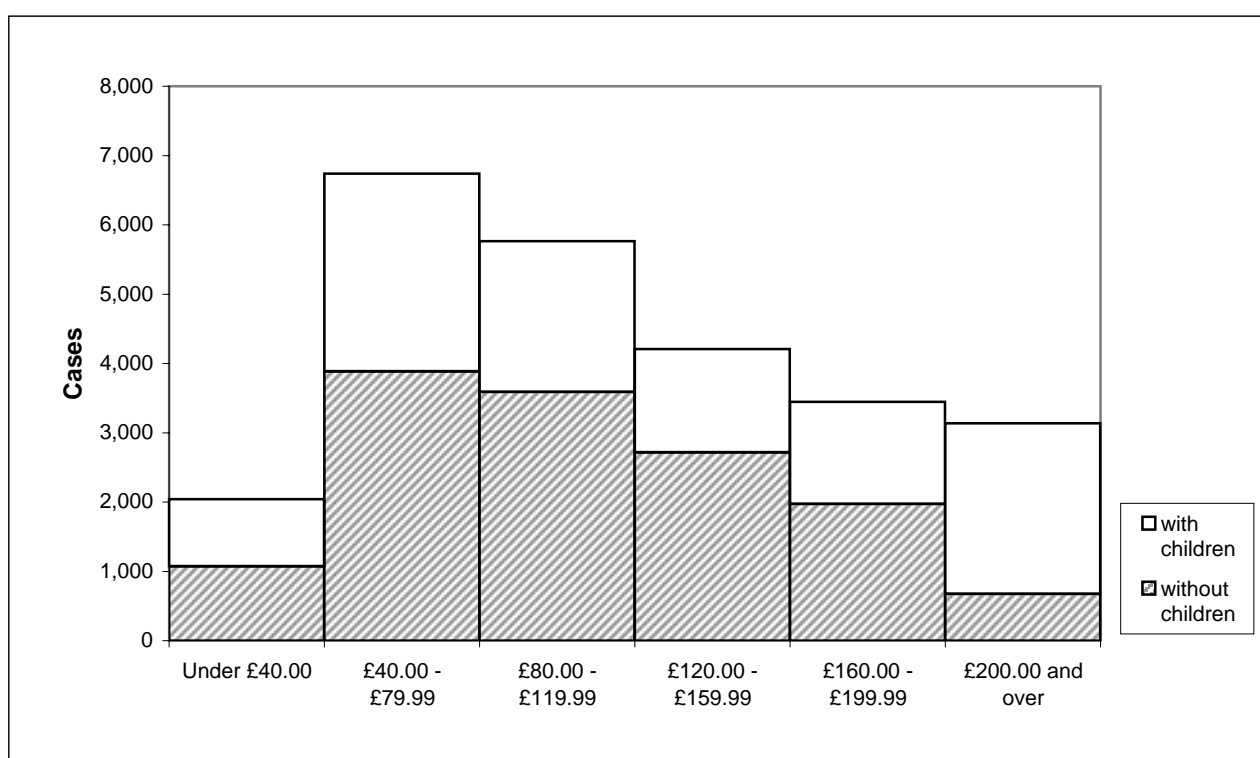
**Table 3.2 : Family size and type by weekly amount of award.***United Kingdom*

|                       | All cases | Weekly amount of award |                 |                 |                 |                 |                   |                  | Average award<br>£ per week |
|-----------------------|-----------|------------------------|-----------------|-----------------|-----------------|-----------------|-------------------|------------------|-----------------------------|
|                       |           | Under £20.00           | £20.00 - £39.99 | £40.00 - £59.99 | £60.00 - £79.99 | £80.00 - £99.99 | £100.00 - £119.99 | £120.00 and over |                             |
| <b>All cases</b>      | 25,326    | 1,606                  | 4,887           | 7,064           | 2,240           | 2,550           | 2,863             | 4,116            | 71.86                       |
| No children           | 13,903    | 1,346                  | 4,369           | 6,253           | 1,056           | 879             | -                 | -                | 44.21                       |
| One child             | 4,451     | 136                    | 279             | 416             | 657             | 902             | 1,751             | 310              | 87.36                       |
| Two children          | 4,185     | 100                    | 188             | 294             | 395             | 568             | 780               | 1,860            | 104.20                      |
| Three children        | 1,894     | 24                     | 42              | 85              | 108             | 162             | 262               | 1,211            | 125.93                      |
| Four or more children | 893       | -                      | 9               | 16              | 24              | 39              | 70                | 735              | 158.86                      |
| <b>Couples</b>        | 9,565     | 444                    | 844             | 1,110           | 1,326           | 1,880           | 1,438             | 2,523            | 91.36                       |
| No children           | 2,459     | 208                    | 399             | 461             | 512             | 879             | -                 | -                | 61.06                       |
| One child             | 2,088     | 118                    | 220             | 290             | 358             | 391             | 624               | 87               | 77.29                       |
| Two or more children  | 5,018     | 118                    | 225             | 359             | 456             | 610             | 814               | 2,436            | 112.07                      |
| <b>Singles</b>        | 15,761    | 1,162                  | 4,043           | 5,954           | 914             | 670             | 1,425             | 1,593            | 60.03                       |
| No children           | 11,444    | 1,138                  | 3,970           | 5,792           | 544             | -               | -                 | -                | 40.59                       |
| One child             | 2,363     | 18                     | 59              | 126             | 299             | 511             | 1,127             | 223              | 96.27                       |
| Two or more children  | 1,954     | 6                      | 14              | 36              | 71              | 159             | 298               | 1,370            | 130.02                      |

**Chart 5 : Number of children by family type.**

**Table 4.1 : Family type by gross weekly earnings of main earner.***United Kingdom*

|                         | All cases | Gross weekly earnings of main earner |                    |                     |                      |                      |                     | Average gross earnings<br>£ per week |
|-------------------------|-----------|--------------------------------------|--------------------|---------------------|----------------------|----------------------|---------------------|--------------------------------------|
|                         |           | Under<br>£40.00                      | £40.00 -<br>£79.99 | £80.00 -<br>£119.99 | £120.00 -<br>£159.99 | £160.00 -<br>£199.99 | £200.00<br>and over |                                      |
| <b>All cases</b>        | 25,326    | 2,041                                | 6,737              | 5,764               | 4,206                | 3,444                | 3,134               | 118.63                               |
| Couples                 | 9,565     | 1,152                                | 2,377              | 1,613               | 1,183                | 1,305                | 1,935               | 127.06                               |
| Singles                 | 15,761    | 889                                  | 4,360              | 4,151               | 3,023                | 2,139                | 1,199               | 113.52                               |
| <b>With children</b>    | 11,423    | 969                                  | 2,854              | 2,175               | 1,491                | 1,474                | 2,460               | 133.03                               |
| Couples                 | 7,106     | 731                                  | 1,669              | 1,119               | 857                  | 993                  | 1,737               | 136.69                               |
| Singles                 | 4,317     | 238                                  | 1,185              | 1,056               | 634                  | 481                  | 723                 | 126.99                               |
| <b>Without children</b> | 13,903    | 1,072                                | 3,883              | 3,589               | 2,715                | 1,970                | 674                 | 106.81                               |
| Couples                 | 2,459     | 421                                  | 708                | 494                 | 326                  | 312                  | 198                 | 99.24                                |
| Singles                 | 11,444    | 651                                  | 3,175              | 3,095               | 2,389                | 1,658                | 476                 | 108.44                               |

**Chart 6 : Gross weekly earnings of main earner and family type**

**Table 4.2 : Other benefits in receipt at the time of application by family type.**

| <i>United Kingdom</i>   |                  |                |                |
|---|------------------|----------------|----------------|
|   | <b>All cases</b> | <b>Couples</b> | <b>Singles</b> |
| <b>Total</b> (one or more types)  | 2,808            | 2,430          | 378            |
| <b>Pensions:</b>  |                  |                |                |
| Retirement pension  | 296              | 169            | 127            |
| War pensions, War disablement pension and War widows pension            | 178              | 140            | 38             |
| <b>Unemployment related benefits:</b>                                   |                  |                |                |
| Jobseeker's allowance   | 40               | 40             | -              |
| <b>Sickness and disability benefits:</b>                                |                  |                |                |
| Incapacity benefit, Statutory sick pay and Severe disablement benefit   | 941              | 925            | 16             |
| Industrial injuries disablement benefit and Disability living allowance | 531              | 385            | 146            |
| <b>Carer benefits:</b>  |                  |                |                |
| Invalid care allowance  | 957              | 905            | 52             |
| <b>Others:</b>  | 9                | -              | -              |

**Table 4.3 : Other income in receipt at the time of application by family type.**

| <i>United Kingdom</i>   |                  |                |                |
|-------------------------|------------------|----------------|----------------|
|                         | <b>All cases</b> | <b>Couples</b> | <b>Singles</b> |
| <b>All cases</b>        | 1,020            | 611            | 409            |
| Benefits in kind        | 32               | 18             | 14             |
| Rent and others         | 994              | 596            | 398            |
| <b>With children</b>    | 498              | } 357          | 141            |
| Benefits in kind        | 10               |                |                |
| Rent and others         | 489              |                |                |
| <b>Without children</b> | 522              | } 254          | 268            |
| Benefits in kind        | 22               |                |                |
| Rent and others         | 505              |                |                |

## **Section 5 : Geographical analysis**

This section shows the number of awards in United Kingdom, and their average weekly value, for each Government Office Region.

The number of awards by local authority and parliamentary constituency are also included in this section.

All Geographical classifications, such as Government Office Region, local authority and parliamentary constituency are derived from the postcode recorded for the applicant, using the 2000 Version 1 Postcode Directory supplied by the Office for National Statistics. This allocates postcodes to local authorities and constituencies according to their definition as at the end of January 2000.

Not all recorded postcodes are complete and accurate. Cases are allocated on the basis of incomplete postcodes if the element present is sufficient to identify the area with certainty.

**Table 5.1 : Number of awards by Government Office Region and family type.**

|                          | <b>All cases</b> | <b>Couples</b> | <b>Singles</b> |
|--------------------------|------------------|----------------|----------------|
| <b>United Kingdom</b>    | 25,326           | 9,565          | 15,761         |
| <b>Great Britain</b>     | 23,706           | 8,947          | 14,759         |
| North East               | 1,509            | 644            | 865            |
| North West               | 3,816            | 1,437          | 2,379          |
| Yorkshire and The Humber | 2,481            | 1,033          | 1,448          |
| East Midlands            | 1,792            | 781            | 1,011          |
| West Midlands            | 2,408            | 917            | 1,491          |
| East of England          | 1,511            | 564            | 947            |
| London                   | 1,342            | 397            | 945            |
| South East               | 2,121            | 701            | 1,420          |
| South West               | 2,275            | 892            | 1,383          |
| Wales                    | 2,127            | 877            | 1,250          |
| Scotland                 | 2,324            | 704            | 1,620          |
| Northern Ireland         | 1,620            | 618            | 1,002          |

**Table 5.2 : Average award by Government Office Region and family type.**

|                          | <b>All cases</b> | <b>Couples</b> | <b>Singles</b>    |
|--------------------------|------------------|----------------|-------------------|
|                          |                  |                | <i>£ per week</i> |
| <b>United Kingdom</b>    | 71.86            | 91.36          | 60.03             |
| <b>Great Britain</b>     | 71.39            | 90.57          | 59.76             |
| North East               | 72.55            | 88.19          | 60.91             |
| North West               | 75.10            | 93.09          | 64.24             |
| Yorkshire and The Humber | 73.33            | 91.34          | 60.49             |
| East Midlands            | 73.02            | 92.40          | 58.05             |
| West Midlands            | 70.32            | 88.91          | 58.89             |
| East of England          | 68.70            | 89.72          | 56.19             |
| London                   | 66.08            | 91.71          | 55.32             |
| South East               | 66.39            | 91.87          | 53.81             |
| South West               | 68.65            | 88.82          | 55.64             |
| Wales                    | 75.39            | 91.37          | 64.18             |
| Scotland                 | 70.67            | 86.53          | 63.78             |
| Northern Ireland         | 78.83            | 102.91         | 63.97             |

**Table 5.3 : Number of awards by local authority.**

| <b>Local authority</b>            | <b>All cases</b> | <b>Local authority</b>                 | <b>All cases</b> |
|-----------------------------------|------------------|--|------------------|
| <b>UNITED KINGDOM</b>             | <b>25,326</b>    | <b>Cumbria</b>                         | <b>248</b>       |
| <b>GREAT BRITAIN</b>              | <b>23,706</b>    | Allerdale                              | 34               |
| <b>ENGLAND</b>                    | <b>19,255</b>    | Barrow-in-Furness                      | 60               |
| <b>NORTH EAST</b>                 | <b>1,509</b>     | Carlisle                               | 46               |
| <b>Darlington UA</b>              | 47               | Copeland                               | 30               |
| <b>Hartlepool UA</b>              | 72               | Eden                                   | 28               |
| <b>Middlesbrough UA</b>           | 80               | South Lakeland                         | 50               |
| <b>Redcar and Cleveland UA</b>    | 70               | <b>Greater Manchester (Met County)</b> | <b>1,466</b>     |
| <b>Stockton-on-Tees UA</b>        | 90               | Bolton                                 | 188              |
| <b>Durham</b>                     | <b>318</b>       | Bury                                   | 111              |
| Chester-le-Street                 | 22               | Manchester                             | 225              |
| Derwentshire                      | 68               | Oldham                                 | 127              |
| Durham                            | 36               | Rochdale                               | 123              |
| Easington                         | 85               | Salford                                | 116              |
| Sedgefield                        | 61               | Stockport                              | 162              |
| Teesdale                          | 11               | Tameside                               | 150              |
| Wear Valley                       | 35               | Trafford                               | 85               |
| <b>Northumberland</b>             | <b>170</b>       | Wigan                                  | 179              |
| Alnwick                           | 11               | <b>Lancashire</b>                      | <b>615</b>       |
| Berwick-upon-Tweed                | 16               | Burnley                                | 50               |
| Blyth Valley                      | 65               | Chorley                                | 45               |
| Castle Morpeth                    | 9                | Fylde                                  | 29               |
| Tynedale                          | 28               | Hyndburn                               | 53               |
| Wansbeck                          | 41               | Lancaster                              | 61               |
| <b>Tyne and Wear (Met County)</b> | <b>662</b>       | Pendle                                 | 68               |
| Gateshead                         | 142              | Preston                                | 71               |
| Newcastle-upon-Tyne               | 136              | Ribble Valley                          | 25               |
| North Tyneside                    | 117              | Rossendale                             | 54               |
| South Tyneside                    | 82               | South Ribble                           | 43               |
| Sunderland                        | 185              | West Lancashire                        | 57               |
| <b>NORTH WEST</b>                 | <b>3,816</b>     | Wyre                                   | 59               |
| <b>Blackburn with Darwen UA</b>   | <b>98</b>        | <b>Merseyside (Met County)</b>         | <b>836</b>       |
| <b>Blackpool UA</b>               | <b>122</b>       | Knowsley                               | 114              |
| <b>Halton UA</b>                  | <b>77</b>        | Liverpool                              | 290              |
| <b>Warrington UA</b>              | <b>83</b>        | St Helens                              | 79               |
| <b>Cheshire</b>                   | <b>271</b>       | Sefton                                 | 147              |
| Chester                           | 64               | Wirral                                 | 206              |
| Congleton                         | 31               | <b>YORKSHIRE AND THE HUMBER</b>        | <b>2,481</b>     |
| Crewe and Nantwich                | 42               | <b>East Riding of Yorkshire UA</b>     | <b>104</b>       |
| Ellesmere Port and Neston         | 47               | <b>Kingston-upon-Hull, City of UA</b>  | <b>136</b>       |
| Macclesfield                      | 44               | <b>North East Lincolnshire UA</b>      | <b>93</b>        |
| Vale Royal                        | 43               | <b>North Lincolnshire UA</b>           | <b>68</b>        |
|                                   |                  | <b>York UA</b>                         | <b>94</b>        |

**Table 5.3 : Number of awards by local authority. (continued)**

| <b>Local authority</b>              | <b>All cases</b> | <b>Local authority</b>             | <b>All cases</b> |
|-------------------------------------|------------------|------------------------------------|------------------|
| <b>North Yorkshire</b>              | 229              | <b>Lincolnshire</b>                | 355              |
| Craven                              | 19               | Boston                             | 56               |
| Hambleton                           | 36               | East Lindsey                       | 112              |
| Harrogate                           | 68               | Lincoln                            | 54               |
| Richmondshire                       | 13               | North Kesteven                     | 31               |
| Ryedale                             | 13               | South Holland                      | 42               |
| Scarborough                         | 62               | South Kesteven                     | 35               |
| Selby                               | 18               | West Lindsey                       | 25               |
| <b>South Yorkshire (Met County)</b> | 728              | <b>Northamptonshire</b>            | 186              |
| Barnsley                            | 138              | Corby                              | 20               |
| Doncaster                           | 187              | Daventry                           | 18               |
| Rotherham                           | 168              | East Northamptonshire              | 19               |
| Sheffield                           | 235              | Kettering                          | 33               |
|                                     |                  | Northampton                        | 62               |
| <b>West Yorkshire (Met County)</b>  | 1,029            | South Northamptonshire             | 12               |
| Bradford                            | 244              | Wellingborough                     | 22               |
| Calderdale                          | 85               |                                    |                  |
| Kirklees                            | 201              | <b>Nottinghamshire</b>             | 337              |
| Leeds                               | 312              | Ashfield                           | 63               |
| Wakefield                           | 187              | Bassetlaw                          | 46               |
|                                     |                  | Broxtowe                           | 36               |
| <b>EAST MIDLANDS</b>                | <b>1,792</b>     | Gedling                            | 50               |
|                                     |                  | Mansfield                          | 75               |
| <b>Derby UA</b>                     | 134              | Newark and Sherwood                | 43               |
| <b>Leicester UA</b>                 | 136              | Rushcliffe                         | 24               |
| <b>Nottingham UA</b>                | 138              |                                    |                  |
| <b>Rutland UA</b>                   | 6                | <b>WEST MIDLANDS</b>               | <b>2,408</b>     |
| <b>Derbyshire</b>                   | 332              | <b>Herefordshire, County of UA</b> | 81               |
| Amber Valley                        | 49               | <b>Stoke-on-Trent UA</b>           | 163              |
| Bolsover                            | 49               | <b>Telford and Wrekin UA</b>       | 97               |
| Chesterfield                        | 68               |                                    |                  |
| Derbyshire Dales                    | 21               | <b>Shropshire</b>                  | 137              |
| Erewash                             | 40               | Bridgnorth                         | 12               |
| High Peak                           | 44               | North Shropshire                   | 25               |
| North East Derbyshire               | 34               | Oswestry                           | 25               |
| South Derbyshire                    | 27               | Shrewsbury and Atcham              | 52               |
|                                     |                  | South Shropshire                   | 23               |
| <b>Leicestershire</b>               | 168              | <b>Staffordshire</b>               | 335              |
| Blaby                               | 29               | Cannock Chase                      | 53               |
| Charnwood                           | 40               | East Staffordshire                 | 43               |
| Harborough                          | 12               | Lichfield                          | 39               |
| Hinckley and Bosworth               | 26               | Newcastle-under-Lyme               | 55               |
| Melton                              | 11               | South Staffordshire                | 41               |
| North West Leicestershire           | 26               | Stafford                           | 34               |
| Oadby and Wigston                   | 24               | Staffordshire Moorlands            | 35               |
|                                     |                  | Tamworth                           | 35               |

**Table 5.3 : Number of awards by local authority. (continued)**

| <b>Local authority</b>            | <b>All cases</b> | <b>Local authority</b>       | <b>All cases</b> |
|-----------------------------------|------------------|------------------------------|------------------|
| <b>Warwickshire</b>               | 176              | <b>Essex</b>                 | 358              |
| North Warwickshire                | 22               | Basildon                     | 45               |
| Nuneaton and Bedworth             | 50               | Braintree                    | 49               |
| Rugby                             | 22               | Brentwood                    | 12               |
| Stratford-upon-Avon               | 32               | Castle Point                 | 21               |
| Warwick                           | 50               | Chelmsford                   | 39               |
|                                   |                  | Colchester                   | 61               |
| <b>West Midlands (Met County)</b> | 1,227            | Epping Forest                | 16               |
| Birmingham                        | 501              | Harlow                       | 19               |
| Coventry                          | 136              | Maldon                       | 13               |
| Dudley                            | 136              | Rochford                     | 14               |
| Sandwell                          | 169              | Tendring                     | 60               |
| Solihull                          | 74               | Uttlesford                   | 9                |
| Walsall                           | 98               |                              |                  |
| Wolverhampton                     | 113              | <b>Hertfordshire</b>         | 208              |
|                                   |                  | Broxbourne                   | 13               |
| <b>Worcestershire</b>             | 192              | Dacorum                      | 45               |
| Bromsgrove                        | 27               | East Hertfordshire           | 13               |
| Malvern Hills                     | 32               | Hertsmere                    | 12               |
| Redditch                          | 45               | North Hertfordshire          | 23               |
| Worcester                         | 24               | St. Albans                   | 33               |
| Wychavon                          | 35               | Stevenage                    | 18               |
| Wyre Forest                       | 29               | Three Rivers                 | 15               |
|                                   |                  | Watford                      | 13               |
|                                   |                  | Welwyn-Hatfield              | 23               |
| <b>EAST OF ENGLAND</b>            | <b>1,511</b>     |                              |                  |
|                                   |                  | <b>Norfolk</b>               | 282              |
| <b>Luton UA</b>                   | 56               | Breckland                    | 34               |
| <b>Peterborough UA</b>            | 75               | Broadland                    | 33               |
| <b>Southend-on-Sea UA</b>         | 35               | Great Yarmouth               | 45               |
| <b>Thurrock UA</b>                | 33               | King's Lynn and West Norfolk | 50               |
|                                   |                  | North Norfolk                | 32               |
| <b>Bedfordshire</b>               | 88               | Norwich                      | 55               |
| Bedford                           | 34               | South Norfolk                | 33               |
| Mid Bedfordshire                  | 25               |                              |                  |
| South Bedfordshire                | 29               | <b>Suffolk</b>               | 217              |
|                                   |                  | Babergh                      | 19               |
| <b>Cambridgeshire</b>             | 159              | Forest Heath                 | 10               |
| Cambridge                         | 37               | Ipswich                      | 62               |
| East Cambridgeshire               | 16               | Mid Suffolk                  | 20               |
| Fenland                           | 39               | St. Edmundsbury              | 25               |
| Huntingdonshire                   | 32               | Suffolk Coastal              | 31               |
| South Cambridgeshire              | 35               | Waveney                      | 50               |

**Table 5.3 : Number of awards by local authority. (continued)**

| <b>Local authority</b>                    | <b>All cases</b> | <b>Local authority</b>           | <b>All cases</b> |
|---|------------------|----------------------------------|------------------|
| <b>LONDON</b>                             | <b>1,342</b>     | <b>SOUTH EAST</b>                | <b>2,121</b>     |
| <b>Inner London</b>                       | 513              | <b>Bracknell Forest UA</b>       | 20               |
| <b>Inner London - West</b>                | 147              | <b>Brighton and Hove UA</b>      | 119              |
| Camden                                    | 42               | <b>Isle of Wight UA</b>          | 56               |
| Hammersmith and Fulham                    | 18               | <b>Medway UA</b>                 | 72               |
| Kensington and Chelsea                    | 27               | <b>Milton Keynes UA</b>          | 72               |
| Wandsworth                                | 36               | <b>Portsmouth UA</b>             | 57               |
| Westminster and City of London            | 24               | <b>Reading UA</b>                | 29               |
| <b>Inner London - East</b>                | 366              | <b>Slough UA</b>                 | 13               |
| Hackney                                   | 53               | <b>Southampton UA</b>            | 73               |
| Haringey                                  | 34               | <b>West Berkshire UA</b>         | 25               |
| Islington                                 | 35               | <b>Windsor and Maidenhead UA</b> | 15               |
| Lambeth                                   | 40               | <b>Wokingham UA</b>              | 18               |
| Lewisham                                  | 56               | <b>Buckinghamshire</b>           | 99               |
| Newham                                    | 71               | Aylesbury Vale                   | 34               |
| Southwark                                 | 44               | Chiltern                         | 14               |
| Tower Hamlets                             | 33               | South Bucks                      | 11               |
| <b>Outer London</b>                       | 829              | Wycombe                          | 40               |
| <b>Outer London - East and North East</b> | 317              | <b>East Sussex</b>               | 145              |
| Barking and Dagenham                      | 42               | Eastbourne                       | 33               |
| Bexley                                    | 51               | Hastings                         | 45               |
| Enfield                                   | 41               | Lewes                            | 20               |
| Greenwich                                 | 41               | Rother                           | 25               |
| Havering                                  | 52               | Wealden                          | 22               |
| Redbridge                                 | 37               | <b>Hampshire</b>                 | 346              |
| Waltham Forest                            | 53               | Basingstoke and Deane            | 38               |
| <b>Outer London - South</b>               | 210              | East Hampshire                   | 26               |
| Bromley                                   | 48               | Eastleigh                        | 31               |
| Croydon                                   | 82               | Fareham                          | 24               |
| Kingston-upon-Thames                      | 18               | Gosport                          | 31               |
| Merton                                    | 25               | Hart                             | 23               |
| Sutton                                    | 37               | Havant                           | 48               |
| <b>Outer London - West and North West</b> | 302              | New Forest                       | 49               |
| Barnet                                    | 54               | Rushmoor                         | 23               |
| Brent                                     | 49               | Test Valley                      | 36               |
| Ealing                                    | 33               | Winchester                       | 17               |
| Harrow                                    | 41               | <b>Kent</b>                      | 388              |
| Hillingdon                                | 44               | Ashford                          | 40               |
| Hounslow                                  | 56               | Canterbury                       | 32               |
| Richmond-upon-Thames                      | 25               | Dartford                         | 20               |
|   |                  | Dover                            | 31               |
|   |                  | Gravesham                        | 26               |
|   |                  | Maidstone                        | 31               |
|   |                  | Sevenoaks                        | 24               |
|   |                  | Shepway                          | 38               |
|   |                  | Swale                            | 38               |
|   |                  | Thanet                           | 67               |
|   |                  | Tonbridge and Malling            | 21               |
|   |                  | Tunbridge Wells                  | 20               |

**Table 5.3 : Number of awards by local authority. (continued)**

| <b>Local authority</b>                   | <b>All cases</b> | <b>Local authority</b> | <b>All cases</b> |
|--|------------------|------------------------|------------------|
| <b>Oxfordshire</b>                       | 170              | <b>Devon</b>           | 326              |
| Cherwell                                 | 42               | East Devon             | 47               |
| Oxford                                   | 33               | Exeter                 | 53               |
| South Oxfordshire                        | 34               | Mid Devon              | 27               |
| Vale of White Horse                      | 32               | North Devon            | 43               |
| West Oxfordshire                         | 29               | South Hams             | 34               |
|  |                  | Teignbridge            | 63               |
| <b>Surrey</b>                            | 186              | Torridge               | 40               |
| Elmbridge                                | 20               | West Devon             | 19               |
| Epsom and Ewell                          | 14               |                        |                  |
| Guildford                                | 14               | <b>Dorset</b>          | 177              |
| Mole Valley                              | 29               | Christchurch           | 21               |
| Reigate and Banstead                     | 26               | East Dorset            | 29               |
| Runnymede                                | 12               | North Dorset           | 32               |
| Spelthorne                               | 10               | Purbeck                | 18               |
| Surrey Heath                             | 18               | West Dorset            | 44               |
| Tandridge                                | 14               | Weymouth and Portland  | 33               |
| Waverley                                 | 16               |                        |                  |
| Woking                                   | 13               | <b>Gloucestershire</b> | 180              |
|  |                  | Cheltenham             | 32               |
| <b>West Sussex</b>                       | 218              | Cotswold               | 16               |
| Adur                                     | 22               | Forest of Dean         | 27               |
| Arun                                     | 46               | Gloucester             | 46               |
| Chichester                               | 31               | Stroud                 | 34               |
| Crawley                                  | 31               | Tewkesbury             | 25               |
| Horsham                                  | 26               |                        |                  |
| Mid Sussex                               | 32               | <b>Somerset</b>        | 216              |
| Worthing                                 | 30               | Mendip                 | 40               |
|  |                  | Sedgemoor              | 45               |
| <b>SOUTH WEST</b>                        | <b>2,275</b>     | South Somerset         | 64               |
|  |                  | Taunton Deane          | 46               |
| <b>Bath and North East Somerset UA</b>   | 70               | West Somerset          | 21               |
| <b>Bournemouth UA</b>                    | 118              |                        |                  |
| <b>Bristol, City of UA</b>               | 150              | <b>Wiltshire</b>       | 116              |
| <b>North Somerset UA</b>                 | 63               | Kennet                 | 16               |
| <b>Plymouth UA</b>                       | 212              | North Wiltshire        | 32               |
| <b>Poole UA</b>                          | 50               | Salisbury              | 37               |
| <b>South Gloucestershire UA</b>          | 72               | South Wiltshire        | 31               |
| <b>Swindon UA</b>                        | 70               |                        |                  |
| <b>Torbay UA</b>                         | 129              |                        |                  |
|  |                  |                        |                  |
| <b>Cornwall, and the Isles of Scilly</b> | 326              |                        |                  |
| Caradon                                  | 47               |                        |                  |
| Carrick                                  | 44               |                        |                  |
| Kerrier                                  | 69               |                        |                  |
| North Cornwall                           | 53               |                        |                  |
| Penwith and Isles of Scilly              | 53               |                        |                  |
| Restormel                                | 60               |                        |                  |

**Table 5.3 : Number of awards by local authority. (continued)**

| <b>Local authority</b>      | <b>All cases</b> | <b>Local authority</b>                 | <b>All cases</b> |
|-----------------------------|------------------|--|------------------|
| <b>WALES</b>                | <b>2,127</b>     | Moray                                  | 26               |
| Blaenau Gwent               | 91               | North Ayrshire                         | 70               |
| Bridgend                    | 87               | North Lanarkshire                      | 222              |
| Caerphilly                  | 171              | Orkney Islands                         | 15               |
| Cardiff                     | 159              | Perth and Kinross                      | 63               |
| Carmarthenshire             | 118              | Renfrewshire                           | 105              |
| Ceredigion                  | 57               | Scottish Borders, The                  | 57               |
| Conwy                       | 69               | Shetland Islands                       | 7                |
| Denbighshire                | 64               | South Ayrshire                         | 45               |
| Flintshire                  | 79               | South Lanarkshire                      | 147              |
| Gwynedd                     | 68               | Stirling                               | 33               |
| Isle of Anglesey            | 60               | West Dunbartonshire                    | 38               |
| Merthyr Tydfil              | 75               | West Lothian                           | 100              |
| Monmouthshire               | 40               |  |                  |
| Neath Port Talbot           | 134              | <b>GREAT BRITAIN - Country unknown</b> | -                |
| Newport                     | 72               |  |                  |
| Pembrokeshire               | 127              |  |                  |
| Powys                       | 94               | <b>NORTHERN IRELAND</b>                | <b>1,620</b>     |
| Rhondda, Cynon, Taff        | 192              | Antrim                                 | 37               |
| Swansea                     | 154              | Ards                                   | 48               |
| Torfaen                     | 59               | Armagh                                 | 48               |
| Vale of Glamorgan, The      | 56               | Ballymena                              | 34               |
| Wrexham                     | 101              | Ballymoney                             | 19               |
|                             |                  | Banbridge                              | 41               |
| <b>SCOTLAND</b>             | <b>2,324</b>     | Belfast                                | 313              |
| Aberdeen City               | 58               | Carrickfergus                          | 26               |
| Aberdeenshire               | 59               | Castlereagh                            | 55               |
| Angus                       | 39               | Coleraine                              | 30               |
| Argyll and Bute             | 30               | Cookstown                              | 44               |
| Clackmannanshire            | 18               | Craigavon                              | 104              |
| Dumfries and Galloway       | 60               | Derry                                  | 104              |
| Dundee City                 | 84               | Down                                   | 63               |
| East Ayrshire               | 53               | Dungannon                              | 53               |
| East Dunbartonshire         | 38               | Fermanagh                              | 41               |
| East Lothian                | 43               | Larne                                  | 19               |
| East Renfrewshire           | 32               | Limavady                               | 28               |
| Edinburgh, City of          | 181              | Lisburn                                | 113              |
| Eilean Siar (Western Isles) | 13               | Magherafelt                            | 35               |
| Falkirk                     | 60               | Moyle                                  | 14               |
| Fife                        | 161              | Newry and Mourne                       | 77               |
| Glasgow City                | 281              | Newtonabbey                            | 73               |
| Highland                    | 106              | North Down                             | 57               |
| Inverclyde                  | 44               | Omagh                                  | 59               |
| Midlothian                  | 36               | Strabane                               | 64               |
|                             |                  | Unknown                                | 21               |

**Table 5.4 : Number of awards by parliamentary constituency.**

| <b>Parliamentary constituency</b>      | <b>All cases</b> | <b>Parliamentary constituency</b> | <b>All cases</b> |
|--|------------------|-----------------------------------|------------------|
| <b>UNITED KINGDOM</b>                  | <b>25,326</b>    | Bolton South East                 | 56               |
|  |                  | Bolton West                       | 48               |
| <b>GREAT BRITAIN</b>                   | <b>23,706</b>    | Bootle                            | 65               |
|  |                  | Boston and Skegness               | 91               |
| <b>ENGLAND</b>                         | <b>19,255</b>    | Bosworth                          | 26               |
|  |                  | Bournemouth East                  | 61               |
| Aldershot                              | 44               | Bournemouth West                  | 57               |
| Aldridge - Brownhills                  | 26               | Bracknell                         | 21               |
| Altrincham and Sale West               | 21               | Bradford North                    | 55               |
| Amber Valley                           | 41               | Bradford South                    | 51               |
| Arundel and South Downs                | 19               | Bradford West                     | 50               |
| Ashfield                               | 55               | Braintree                         | 37               |
| Ashford                                | 40               | Brent East                        | 18               |
| Ashton under Lyne                      | 66               | Brent North                       | 13               |
| Aylesbury                              | 21               | Brent South                       | 18               |
| Banbury                                | 32               | Brentford and Isleworth           | 28               |
| Barking                                | 21               | Brentwood and Ongar               | 14               |
| Barnsley Central                       | 55               | Bridgwater                        | 48               |
| Barnsley East and Mexborough           | 58               | Brigg and Goole                   | 38               |
| Barnsley West and Penistone            | 45               | Brighton, Kemptown                | 49               |
| Barrow and Furness                     | 67               | Brighton, Pavilion                | 37               |
| Basildon                               | 37               | Bristol East                      | 32               |
| Basingstoke                            | 29               | Bristol North West                | 55               |
| Bassetlaw                              | 49               | Bristol South                     | 46               |
| Bath                                   | 43               | Bristol West                      | 24               |
| Batley and Spen                        | 40               | Bromley and Chislehurst           | 13               |
| Battersea                              | 11               | Bromsgrove                        | 27               |
| Beaconsfield                           | 20               | Broxbourne                        | 13               |
| Beckenham                              | 15               | Broxtowe                          | 30               |
| Bedford                                | 22               | Buckingham                        | 16               |
| Berwick-upon-Tweed                     | 29               | Burnley                           | 50               |
| Bethnal Green and Bow                  | 20               | Burton                            | 41               |
| Beverley and Holderness                | 38               | Bury North                        | 49               |
| Bexhill and Battle                     | 25               | Bury South                        | 62               |
| Bexleyheath and Crayford               | 24               | Bury St. Edmunds                  | 27               |
| Billericay                             | 17               | Calder Valley                     | 43               |
| Birkenhead                             | 73               | Camberwell and Peckham            | 20               |
| Birmingham, Edgbaston                  | 28               | Cambridge                         | 33               |
| Birmingham, Erdington                  | 70               | Cannock Chase                     | 54               |
| Birmingham, Hall Green                 | 34               | Canterbury                        | 23               |
| Birmingham, Hodge Hill                 | 53               | Carlisle                          | 36               |
| Birmingham, Ladywood                   | 47               | Carshalton and Wallington         | 23               |
| Birmingham, Northfield                 | 42               | Castle Point                      | 21               |
| Birmingham, Perry Barr                 | 44               | Central Suffolk and North Ipswich | 21               |
| Birmingham, Selly Oak                  | 44               | Charnwood                         | 21               |
| Birmingham, Sparkbrook and Small Heath | 63               | Chatham and Aylesford             | 32               |
| Birmingham, Yardley                    | 39               | Cheadle                           | 46               |
| Bishop Auckland                        | 46               | Cheltenham                        | 26               |
| Blaby                                  | 19               | Chesham and Amersham              | 15               |
| Blackburn                              | 74               | Chesterfield                      | 65               |
| Blackpool North and Fleetwood          | 70               | Chester, City of                  | 44               |
| Blackpool South                        | 84               | Chichester                        | 28               |
| Blaydon                                | 52               | Chingford and Woodford Green      | 17               |
| Blyth Valley                           | 65               | Chipping Barnet                   | 16               |
| Bognor Regis and Littlehampton         | 36               | Chorley                           | 45               |
| Bolsover                               | 50               | Christchurch                      | 43               |
| Bolton North East                      | 84               | Cities of London and Westminster  | 8                |

**Table 5.4 : Number of awards by parliamentary constituency. (continued)**

| <b>Parliamentary constituency</b> | <b>All cases</b> | <b>Parliamentary constituency</b>  | <b>All cases</b> |
|-----------------------------------|------------------|------------------------------------|------------------|
| Cleethorpes                       | 51               | Esher and Walton                   | 19               |
| Colchester                        | 42               | Exeter                             | 53               |
| Colne Valley                      | 52               | Falmouth and Camborne              | 71               |
| Congleton                         | 31               | Fareham                            | 23               |
| Copeland                          | 30               | Faversham and Mid Kent             | 17               |
| Corby                             | 28               | Feltham and Heston                 | 28               |
| Cotswold                          | 16               | Finchley and Golders Green         | 20               |
| Coventry North East               | 54               | Folkestone and Hythe               | 38               |
| Coventry North West               | 54               | Forest of Dean                     | 30               |
| Coventry South                    | 28               | Fylde                              | 43               |
| Crawley                           | 31               | Gainsborough                       | 25               |
| Crewe and Nantwich                | 41               | Gateshead East and Washington West | 54               |
| Crosby                            | 21               | Gedling                            | 42               |
| Croydon Central                   | 25               | Gillingham                         | 23               |
| Croydon North                     | 28               | Gloucester                         | 46               |
| Croydon South                     | 29               | Gosport                            | 32               |
| Dagenham                          | 21               | Grantham and Stamford              | 32               |
| Darlington                        | 41               | Gravesham                          | 26               |
| Dartford                          | 24               | Great Grimsby                      | 50               |
| Daventry                          | 26               | Great Yarmouth                     | 45               |
| Denton and Reddish                | 69               | Greenwich and Woolwich             | 16               |
| Derby North                       | 57               | Guildford                          | 14               |
| Derby South                       | 61               | Hackney North and Stoke Newington  | 19               |
| Devizes                           | 30               | Hackney South and Shoreditch       | 34               |
| Dewsbury                          | 45               | Halesowen and Rowley Regis         | 37               |
| Don Valley                        | 40               | Halifax                            | 42               |
| Doncaster Central                 | 59               | Haltemprice and Howden             | 17               |
| Doncaster North                   | 68               | Halton                             | 51               |
| Dover                             | 29               | Hammersmith and Fulham             | 12               |
| Dudley North                      | 44               | Hampstead and Highgate             | 12               |
| Dudley South                      | 36               | Harborough                         | 31               |
| Dulwich and West Norwood          | 19               | Harlow                             | 20               |
| Durham,. City of                  | 36               | Harrogate and Knaresborough        | 46               |
| Ealing North                      | 11               | Harrow East                        | 21               |
| Ealing Southall                   | 18               | Harrow West                        | 20               |
| Ealing, Acton and Shepherd's Bush | 10               | Hartlepool                         | 72               |
| Easington                         | 76               | Harwich                            | 51               |
| East Devon                        | 29               | Hastings and Rye                   | 45               |
| East Ham                          | 32               | Havant                             | 44               |
| East Hampshire                    | 25               | Hayes and Harlington               | 19               |
| East Surrey                       | 20               | Hazel Grove                        | 40               |
| East Worthing and Shoreham        | 33               | Hemel Hempstead                    | 36               |
| East Yorkshire                    | 32               | Hemsworth                          | 61               |
| Eastbourne                        | 34               | Hendon                             | 18               |
| Eastleigh                         | 30               | Henley                             | 18               |
| Eccles                            | 29               | Hereford                           | 54               |
| Eddisbury                         | 47               | Hertford and Stortford             | 10               |
| Edmonton                          | 20               | Hertsmere                          | 12               |
| Ellesmere Port and Neston         | 48               | Hexham                             | 30               |
| Elmet                             | 31               | Heywood and Middleton              | 50               |
| Eltham                            | 12               | High Peak                          | 46               |
| Enfield North                     | 13               | Hitchin and Harpenden              | 13               |
| Enfield, Southgate                | 8                | Holborn and St Pancras             | 30               |
| Epping Forest                     | 13               | Hornchurch                         | 21               |
| Epsom and Ewell                   | 19               | Hornsey and Wood Green             | 18               |
| Erewash                           | 38               | Horsham                            | 21               |
| Erith and Thamesmead              | 22               | Houghton and Washington East       | 43               |

**Table 5.4 : Number of awards by parliamentary constituency. (continued)**

| <b>Parliamentary constituency</b>  | <b>All cases</b> | <b>Parliamentary constituency</b>      | <b>All cases</b> |
|------------------------------------|------------------|--|------------------|
| Hove                               | 40               | Manchester, Withington                 | 27               |
| Huddersfield                       | 50               | Mansfield                              | 65               |
| Huntingdon                         | 22               | Medway                                 | 23               |
| Hyndburn                           | 59               | Meriden                                | 41               |
| Ilford North                       | 16               | Mid Bedfordshire                       | 19               |
| Ilford South                       | 17               | Mid Dorset and North Poole             | 33               |
| Ipswich                            | 52               | Mid Norfolk                            | 26               |
| Isle of Wight                      | 56               | Mid Sussex                             | 26               |
| Islington North                    | 20               | Mid Worcestershire                     | 32               |
| Islington South and Finsbury       | 15               | Middlesbrough                          | 54               |
| Jarrow                             | 53               | Middlesbrough South and East Cleveland | 51               |
| Keighley                           | 48               | Milton Keynes North East               | 32               |
| Kensington and Chelsea             | 7                | Milton Keynes South West               | 40               |
| Kettering                          | 34               | Mitcham and Morden                     | 17               |
| Kingston and Surbiton              | 16               | Mole Valley                            | 28               |
| Kingston upon Hull East            | 54               | Morecambe and Lunesdale                | 42               |
| Kingston upon Hull North           | 43               | Morley and Rothwell                    | 46               |
| Kingston upon Hull West and Hessle | 44               | New Forest East                        | 24               |
| Kingswood                          | 39               | New Forest West                        | 25               |
| Knowsley North and Sefton East     | 73               | Newark                                 | 27               |
| Knowsley South                     | 66               | Newbury                                | 18               |
| Lancaster and Wyre                 | 44               | Newcastle upon Tyne Central            | 44               |
| Leeds Central                      | 50               | Newcastle upon Tyne East and Wallsend  | 40               |
| Leeds East                         | 45               | Newcastle upon Tyne North              | 53               |
| Leeds North East                   | 46               | Newcastle-under-Lyme                   | 45               |
| Leeds North West                   | 17               | Normanton                              | 42               |
| Leeds West                         | 40               | North Cornwall                         | 76               |
| Leicester East                     | 33               | North Devon                            | 45               |
| Leicester South                    | 57               | North Dorset                           | 38               |
| Leicester West                     | 46               | North Durham                           | 53               |
| Leigh                              | 66               | North East Bedfordshire                | 22               |
| Leominster                         | 29               | North East Cambridgeshire              | 44               |
| Lewes                              | 16               | North East Derbyshire                  | 35               |
| Lewisham East                      | 28               | North East Hampshire                   | 7                |
| Lewisham West                      | 13               | North East Hertfordshire               | 19               |
| Lewisham, Deptford                 | 15               | North Essex                            | 28               |
| Leyton and Wanstead                | 22               | North Norfolk                          | 32               |
| Lichfield                          | 37               | North Shropshire                       | 50               |
| Lincoln                            | 56               | North Southwark and Bermondsey         | 13               |
| Liverpool, Garston                 | 62               | North Swindon                          | 34               |
| Liverpool, Riverside               | 47               | North Thanet                           | 49               |
| Liverpool, Walton                  | 66               | North Tyneside                         | 63               |
| Liverpool, Wavertree               | 60               | North Warwickshire                     | 36               |
| Liverpool, West Derby              | 54               | North West Cambridgeshire              | 29               |
| Loughborough                       | 29               | North West Durham                      | 55               |
| Louth and Horncastle               | 76               | North West Hampshire                   | 31               |
| Ludlow                             | 29               | North West Leicestershire              | 26               |
| Luton North                        | 33               | North West Norfolk                     | 42               |
| Luton South                        | 24               | North Wiltshire                        | 26               |
| Macclesfield                       | 27               | Northampton North                      | 37               |
| Maidenhead                         | 16               | Northampton South                      | 22               |
| Maidstone and The Weald            | 21               | Northavon                              | 24               |
| Makerfield                         | 60               | Norwich North                          | 38               |
| Maldon and East Chelmsford         | 18               | Norwich South                          | 38               |
| Manchester, Blackley               | 43               | Nottingham East                        | 46               |
| Manchester, Central                | 58               | Nottingham North                       | 50               |
| Manchester, Gorton                 | 46               | Nottingham South                       | 41               |

**Table 5.4 : Number of awards by parliamentary constituency. (continued)**

| <b>Parliamentary constituency</b>  | <b>All cases</b> | <b>Parliamentary constituency</b> | <b>All cases</b> |
|------------------------------------|------------------|-----------------------------------|------------------|
| Nuneaton                           | 39               | Sherwood                          | 45               |
| Old Bexley and Sidcup              | 16               | Shipley                           | 39               |
| Oldham East and Saddleworth        | 56               | Shrewsbury and Atcham             | 52               |
| Oldham West and Royton             | 58               | Sittingbourne and Sheppey         | 32               |
| Orpington                          | 20               | Skipton and Ripon                 | 34               |
| Oxford East                        | 29               | Sleaford and North Hykeham        | 30               |
| Oxford West and Abingdon           | 32               | Slough                            | 13               |
| Pendle                             | 68               | Solihull                          | 32               |
| Penrith and The Border             | 42               | Somerton and Frome                | 39               |
| Peterborough                       | 52               | South Cambridgeshire              | 33               |
| Plymouth, Devonport                | 110              | South Derbyshire                  | 43               |
| Plymouth, Sutton                   | 74               | South Dorset                      | 42               |
| Pontefract and Castleford          | 55               | South East Cambridgeshire         | 21               |
| Poole                              | 30               | South East Cornwall               | 57               |
| Poplar and Canning Town            | 24               | South Holland and The Deepings    | 44               |
| Portsmouth North                   | 39               | South Norfolk                     | 28               |
| Portsmouth South                   | 18               | South Ribble                      | 41               |
| Preston                            | 58               | South Shields                     | 36               |
| Pudsey                             | 38               | South Staffordshire               | 34               |
| Putney                             | 13               | South Suffolk                     | 19               |
| Rayleigh                           | 14               | South Swindon                     | 36               |
| Reading East                       | 16               | South Thanet                      | 29               |
| Reading West                       | 19               | South West Bedfordshire           | 24               |
| Redcar                             | 45               | South West Devon                  | 36               |
| Redditch                           | 46               | South West Hertfordshire          | 19               |
| Regent's Park and Kensington North | 35               | South West Norfolk                | 32               |
| Reigate                            | 16               | South West Surrey                 | 14               |
| Ribble Valley                      | 36               | Southampton, Itchen               | 34               |
| Richmond (Yorks)                   | 32               | Southampton, Test                 | 32               |
| Richmond Park                      | 11               | Southend West                     | 12               |
| Rochdale                           | 67               | Southport                         | 36               |
| Rochford and Southend East         | 26               | Spelthorne                        | 10               |
| Romford                            | 15               | St Albans                         | 25               |
| Romsey                             | 22               | St Helens North                   | 38               |
| Rossendale and Darwen              | 72               | St Helens South                   | 41               |
| Rother Valley                      | 56               | St Ives                           | 69               |
| Rotherham                          | 53               | Stafford                          | 30               |
| Rugby and Kenilworth               | 23               | Staffordshire Moorlands           | 28               |
| Ruislip - Northwood                | 13               | Stalybridge and Hyde              | 55               |
| Runnymede and Weybridge            | 13               | Stevenage                         | 20               |
| Rushcliffe                         | 24               | Stockport                         | 55               |
| Rutland and Melton                 | 22               | Stockton North                    | 46               |
| Ryedale                            | 37               | Stockton South                    | 44               |
| Saffron Walden                     | 21               | Stoke-on-Trent Central            | 53               |
| Salford                            | 45               | Stoke-on-Trent North              | 45               |
| Salisbury                          | 34               | Stoke-on-Trent South              | 68               |
| Scarborough and Whitby             | 52               | Stone                             | 24               |
| Scunthorpe                         | 34               | Stourbridge                       | 37               |
| Sedgefield                         | 58               | Stratford-on-Avon                 | 31               |
| Selby                              | 24               | Streatham                         | 12               |
| Sevenoaks                          | 17               | Stretford and Urmston             | 59               |
| Sheffield Central                  | 39               | Stroud                            | 34               |
| Sheffield, Attercliffe             | 47               | Suffolk Coastal                   | 30               |
| Sheffield, Brightside              | 53               | Sunderland North                  | 63               |
| Sheffield, Hallam                  | 13               | Sunderland South                  | 66               |
| Sheffield, Heeley                  | 40               | Surrey Heath                      | 20               |
| Sheffield, Hillsborough            | 43               | Sutton and Cheam                  | 14               |

**Table 5.4 : Number of awards by parliamentary constituency. (continued)**

| <b>Parliamentary constituency</b> | <b>All cases</b> | <b>Parliamentary constituency</b>       | <b>All cases</b> |
|-----------------------------------|------------------|---|------------------|
| Sutton Coldfield                  | 37               | Wimbledon                               | 8                |
| Tamworth                          | 39               | Winchester                              | 17               |
| Tatton                            | 23               | Windsor                                 | -                |
| Taunton                           | 48               | Wirral South                            | 35               |
| Teignbridge                       | 52               | Wirral West                             | 29               |
| Telford                           | 57               | Witney                                  | 29               |
| Tewkesbury                        | 27               | Woking                                  | 13               |
| Thurrock                          | 24               | Wokingham                               | 13               |
| Tiverton and Honiton              | 43               | Wolverhampton North East                | 45               |
| Tonbridge and Malling             | 18               | Wolverhampton South East                | 39               |
| Tooting                           | 12               | Wolverhampton South West                | 29               |
| Torbay                            | 96               | Woodspring                              | 21               |
| Torridge and West Devon           | 59               | Worcester                               | 24               |
| Totnes                            | 70               | Workington                              | 29               |
| Tottenham                         | 16               | Worsley                                 | 63               |
| Truro and St. Austell             | 52               | Worthing West                           | 24               |
| Tunbridge Wells                   | 19               | Wrekin, The                             | 45               |
| Twickenham                        | 16               | Wycombe                                 | 27               |
| Tyne Bridge                       | 55               | Wyre Forest                             | 28               |
| Tynemouth                         | 40               | Wythenshawe and Sale East               | 55               |
| Upminster                         | 16               | Yeovil                                  | 48               |
| Uxbridge                          | 12               | York, City of                           | 57               |
| Vale of York                      | 41               | Unknown                                 | 32               |
| Vauxhall                          | 19               |   |                  |
| Wakefield                         | 43               |   |                  |
| Wallasey                          | 66               | <b>WALES</b>                            | <b>2,127</b>     |
| Walsall North                     | 44               |   |                  |
| Walsall South                     | 28               | Aberavon                                | 80               |
| Walthamstow                       | 18               | Alyn and Deeside                        | 41               |
| Wansbeck                          | 46               | Blaenau Gwent                           | 90               |
| Wansdyke                          | 29               | Brecon and Radnorshire                  | 46               |
| Wantage                           | 30               | Bridgend                                | 56               |
| Warley                            | 46               | Caernarfon                              | 39               |
| Warrington North                  | 45               | Caerphilly                              | 99               |
| Warrington South                  | 38               | Cardiff Central                         | 45               |
| Warwick and Leamington            | 47               | Cardiff North                           | 25               |
| Watford                           | 16               | Cardiff South and Penarth               | 55               |
| Waveney                           | 45               | Cardiff West                            | 41               |
| Wealden                           | 17               | Carmarthen East and Dinefwr             | 48               |
| Weaver Vale                       | 36               | Carmarthen West and South Pembrokeshire | 72               |
| Wellingborough                    | 33               | Ceredigion                              | 56               |
| Wells                             | 33               | Clwyd South                             | 48               |
| Welwyn Hatfield                   | 22               | Clwyd West                              | 39               |
| Wentworth                         | 59               | Conwy                                   | 40               |
| West Bromwich East                | 49               | Cynon Valley                            | 73               |
| West Bromwich West                | 55               | Delyn                                   | 38               |
| West Chelmsford                   | 31               | Gower                                   | 42               |
| West Derbyshire                   | 29               | Islwyn                                  | 60               |
| West Dorset                       | 41               | Llanelli                                | 52               |
| West Ham                          | 28               | Meirionnydd Nant Conwy                  | 23               |
| West Lancashire                   | 48               | Merthyr Tydfil and Rhymney              | 87               |
| West Suffolk                      | 23               | Monmouth                                | 38               |
| West Worcestershire               | 32               | Montgomeryshire                         | 48               |
| Westbury                          | 26               | Neath                                   | 54               |
| Westmorland and Lonsdale          | 43               | Newport East                            | 36               |
| Weston-super-Mare                 | 42               | Newport West                            | 42               |
| Wigan                             | 31               | Ogmore                                  | 43               |

**Table 5.4 : Number of awards by parliamentary constituency. (continued)**

| <b>Parliamentary constituency</b>     | <b>All cases</b> | <b>Parliamentary constituency</b>      | <b>All cases</b> |
|---------------------------------------|------------------|--|------------------|
| Pontypridd                            | 48               | Glasgow, Rutherglen                    | 29               |
| Preseli Pembrokeshire                 | 73               | Glasgow, Shettleston                   | 33               |
| Rhondda                               | 64               | Glasgow, Springburn                    | 31               |
| Swansea East                          | 65               | Gordon                                 | 16               |
| Swansea West                          | 47               | Greenock and Inverclyde                | 21               |
| Torfaen                               | 55               | Hamilton North and Bellshill           | 44               |
| Vale of Clwyd                         | 59               | Hamilton South                         | 43               |
| Vale of Glamorgan                     | 44               | Inverness East, Nairn and Lochaber     | 35               |
| Wrexham                               | 54               | Kilmarnock and Loudoun                 | 29               |
| Ynys Mon                              | 60               | Kirkcaldy                              | 28               |
| Unknown                               | 2                | Linlithgow                             | 44               |
|                                       |                  | Livingston                             | 56               |
|                                       |                  | Midlothian                             | 31               |
| <b>SCOTLAND</b>                       | <b>2,324</b>     | Moray                                  | 24               |
|                                       |                  | Motherwell and Wishaw                  | 53               |
| Aberdeen Central                      | 20               | North East Fife                        | 20               |
| Aberdeen North                        | 27               | North Tayside                          | 26               |
| Aberdeen South                        | 11               | Ochil                                  | 23               |
| Airdrie and Shotts                    | 55               | Orkney and Shetland                    | 22               |
| Angus                                 | 32               | Paisley North                          | 51               |
| Argyll and Bute                       | 24               | Paisley South                          | 32               |
| Ayr                                   | 30               | Perth                                  | 42               |
| Banff and Buchan                      | 33               | Ross, Skye and Inverness West          | 43               |
| Caithness, Sutherland and Easter Ross | 27               | Roxburgh and Berwickshire              | 33               |
| Carrick, Cumnock and Doon Valley      | 39               | Stirling                               | 30               |
| Central Fife                          | 50               | Strathkelvin and Bearsden              | 32               |
| Clydebank and Milngavie               | 22               | Tweeddale, Ettrick and Lauderdale      | 29               |
| Clydesdale                            | 34               | West Aberdeenshire and Kincardine      | 12               |
| Coatbridge and Chryston               | 59               | West Renfrewshire                      | 45               |
| Cumbernauld and Kilsyth               | 24               | Western Isles                          | 13               |
| Cunninghame North                     | 36               | Unknown                                | 3                |
| Cunninghame South                     | 34               |  |                  |
| Dumbarton                             | 27               |  |                  |
| Dumfries                              | 33               | <b>GREAT BRITAIN - Country unknown</b> | -                |
| Dundee East                           | 36               |  |                  |
| Dundee West                           | 48               |  |                  |
| Dunfermline East                      | 36               | <b>NORTHERN IRELAND</b>                | <b>1,620</b>     |
| Dunfermline West                      | 27               |  |                  |
| East Kilbride                         | 32               | Belfast East                           | 62               |
| East Lothian                          | 41               | Belfast North                          | 111              |
| Eastwood                              | 32               | Belfast South                          | 75               |
| Edinburgh Central                     | 28               | Belfast West                           | 149              |
| Edinburgh East and Musselburgh        | 37               | East Antrim                            | 59               |
| Edinburgh North and Leith             | 28               | East Londonderry                       | 58               |
| Edinburgh South                       | 26               | Fermanagh and South Tyrone             | 73               |
| Edinburgh West                        | 24               | Foyle                                  | 101              |
| Edinburgh, Pentlands                  | 39               | Lagan Valley                           | 84               |
| Falkirk East                          | 27               | Mid Ulster                             | 95               |
| Falkirk West                          | 33               | Newry and Armagh                       | 87               |
| Galloway and Upper Nithsdale          | 27               | North Antrim                           | 65               |
| Glasgow, Anniesland                   | 27               | North Down                             | 62               |
| Glasgow, Baillieston                  | 40               | South Antrim                           | 76               |
| Glasgow, Cathcart                     | 27               | South Down                             | 97               |
| Glasgow, Govan                        | 21               | Strangford                             | 66               |
| Glasgow, Kelvin                       | 16               | Upper Bann                             | 130              |
| Glasgow, Maryhill                     | 46               | West Tyrone                            | 121              |
| Glasgow, Pollok                       | 36               | Unknown                                | 49               |

**Table 6.1 : Type and main qualifying benefit of all awards starting between October 1999 and July 2000.**

|  |                  | <i>United Kingdom</i>               |
|--|------------------|-------------------------------------|
|  | <b>All cases</b> | <b>Average award<br/>£ per week</b> |
| <b>All awards</b>  |                  |                                     |
| <b>All qualifying benefits</b>                                 | 40,346           | 70.70                               |
| Disability living allowance - higher rate & analogous benefits | 17,454           | 67.90                               |
| Disability living allowance - lower rate                       | 8,433            | 61.86                               |
| Severe disablement benefit                                     | 2,877            | 60.13                               |
| Disability premium in IS/JSA/HB/CTB                            | 5,353            | 88.40                               |
| Incapacity benefit (higher rate short term)                    | 1,288            | 79.76                               |
| Incapacity benefit (long term)                                 | 4,941            | 80.34                               |
| <b>New awards <sup>1</sup></b>                                 |                  |                                     |
| <b>All qualifying benefits</b>                                 | 11,896           | 69.74                               |
| Disability living allowance - higher rate & analogous benefits | 4,544            | 63.07                               |
| Disability living allowance - lower rate                       | 2,306            | 62.70                               |
| Severe disablement benefit                                     | 858              | 62.13                               |
| Disability premium in IS/JSA/HB/CTB                            | 1,891            | 89.66                               |
| Incapacity benefit (higher rate short term)                    | 544              | 79.17                               |
| Incapacity benefit (long term)                                 | 1,753            | 75.59                               |
| <b>Renewal awards <sup>2</sup></b>                             |                  |                                     |
| <b>All qualifying benefits</b>                                 | 25,780           | 71.79                               |
| Disability living allowance - higher rate & analogous benefits | 11,523           | 70.23                               |
| Disability living allowance - lower rate                       | 5,487            | 62.07                               |
| Severe disablement benefit                                     | 1,878            | 59.71                               |
| Disability premium in IS/JSA/HB/CTB                            | 3,231            | 88.31                               |
| Incapacity benefit (higher rate short term)                    | 691              | 81.07                               |
| Incapacity benefit (long term)                                 | 2,970            | 83.29                               |
| <b>Repeat awards <sup>3</sup></b>                              |                  |                                     |
| <b>All qualifying benefits</b>                                 | 2,670            | 64.54                               |
| Disability living allowance - higher rate & analogous benefits | 1,387            | 64.34                               |
| Disability living allowance - lower rate                       | 640              | 57.00                               |
| Severe disablement benefit                                     | 141              | 53.61                               |
| Disability premium in IS/JSA/HB/CTB                            | 231              | 79.41                               |
| Incapacity benefit (higher rate short term)                    | 53               | 68.81                               |
| Incapacity benefit (long term)                                 | 218              | 78.27                               |

## Notes :

1. New awards are made to people who have never received DWA or DPTC before.
2. Renewal awards are those following on immediately from a previous award without a break.
3. Repeat awards are those where there has been a previous award but there has been a break between claims.
4. Figures for DWA awards in Great Britain starting between November 1992 and August 1999 appear in the enquiry statistics for October 1999.

(NB if the previous award ended more than 2 years earlier then the claim will be treated as 'NEW'.)

**Table 6.2 : Awards starting between October 1999 and July 2000 by type of award and family type.**

|                                    | <i>United Kingdom</i> |                |               |                |               |
|------------------------------------|-----------------------|----------------|---------------|----------------|---------------|
|                                    | <b>All Cases</b>      | <b>Couples</b> |               | <b>Singles</b> |               |
|                                    |                       | <b>Male</b>    | <b>Female</b> | <b>Male</b>    | <b>Female</b> |
| <b>All awards</b>                  | 40,346                | 12,489         | 2,639         | 10,987         | 14,231        |
| <b>New awards</b> <sup>1</sup>     | 11,896                | 3,679          | 974           | 2,927          | 4,316         |
| <b>Renewal awards</b> <sup>2</sup> | 25,780                | 8,086          | 1,468         | 7,239          | 8,987         |
| <b>Repeat awards</b> <sup>3</sup>  | 2,670                 | 724            | 197           | 821            | 928           |

## Notes :

1. New awards are made to people who have never received DWA or DPTC before.
2. Renewal awards are those following on immediately from a previous award without a break.
3. Repeat awards are those where there has been a previous award but there has been a break between claims.
4. Figures for DWA awards in Great Britain starting between November 1992 and August 1999 appear in the enquiry statistics for October 1999.

(NB if the previous award ended more than 2 years earlier then the claim will be treated as 'NEW'.)

**Table 6.3 : Disallowances between October 1999 and July 2000 by reason of disallowance.***United Kingdom*

|   | <b>Number of disallowances</b> |
|---|--------------------------------|
| <b>All disallowances</b>  | 8,079                          |
| <b>All A codes</b>  | 59                             |
| A1 Claimant was not in UK   | 58                             |
| A2 Claimant was not normally living in UK   | -                              |
| A3 Partner not normally living in UK  | -                              |
| A4 All claimants earnings from outside UK   | -                              |
| <b>All C codes</b>  | 84                             |
| C1 Claimant's capital exceeds £16,000   | 66                             |
| C2 Claimant and partner's capital exceeds £16,000   | 14                             |
| C3 Failure to provide information about value of claimant and partner's capital   | -                              |
| C4 Failure to provide information about value of claimant's capital   | -                              |
| <b>All D codes</b>  | 1,622                          |
| D1 Claimant not doing paid work for an average of 16 hours a week or more   | 601                            |
| D2 Claimant not in paid work  | 508                            |
| D5 Claimant not engaged in remunerative work in relevant weeks  | 381                            |
| D7 Claimant not normally engaged in paid work   | 118                            |
| D9 Claimant not treated as in paid work - voluntary   | -                              |
| D11 Claimant not treated as in paid work - charity  | -                              |
| D13 Claimant working for voluntary body - expenses  | -                              |
| D15 Claimant could not be treated as in paid work on the information available  | 12                             |
| <b>All E codes</b>  | 1,611                          |
| E1 Claimant's income higher than the level at which DPTC would become payable   | 1,403                          |
| E2 Claimant's entitlement less than the minimum amount of DPTC  | 35                             |
| E3 On the information available the claimant or partner's income was higher then the level at which DPTC would become payable | 173                            |
| <b>All other codes</b>  |                                |
| G1 Any disallowance not covered by other categories   | 152                            |
| I DPTC claim made more than 6 weeks before DPTC end date  | 1,300                          |
| J1 Qualifying benefit test not satisfied  | 2,308                          |
| K1 Disability test not satisfied  | 417                            |
| L Lapsed claim  | 20                             |
| W Claimant has withdrawn claim  | 503                            |

## Notes :

1. Figures for DWA disallowances in Great Britain occurring between November 1992 and August 1999 appear in the enquiry statistics for October 1999.

**Table 6.4 : Renewal and repeat awards starting between October 1999 and July 2000 by disability type and age of claimant.**

|  | <i>United Kingdom</i> |          |         |         |         |                |
|--|-----------------------|----------|---------|---------|---------|----------------|
|  | All<br>ages           | Under 30 | 30 - 39 | 40 - 49 | 50 - 59 | 60 and<br>over |
| <b>Renewal awards <sup>1</sup></b>           |                       |          |         |         |         |                |
| Mental disabilities - treatment              | 1,762                 | 214      | 665     | 594     | 268     | 21             |
| Mental disabilities - day to day things      | 2,454                 | 778      | 811     | 562     | 275     | 28             |
| Mental disabilities - getting on with people | 2,033                 | 468      | 770     | 526     | 253     | 16             |
| Fits and comas                               | 180                   | 44       | 75      | 42      | 19      | -              |
| Exhaustion and pain                          | 7,174                 | 717      | 2,198   | 2,382   | 1,611   | 266            |
| Seeing                                       | 754                   | 173      | 263     | 201     | 99      | 18             |
| Hearing                                      | 414                   | 81       | 147     | 106     | 71      | 9              |
| Communicating                                | 760                   | 227      | 244     | 178     | 98      | 13             |
| Getting around                               | 1,110                 | 107      | 315     | 370     | 262     | 56             |
| Using your hands                             | 1,126                 | 242      | 385     | 296     | 179     | 24             |
| Reaching with your arms                      | 155                   | 21       | 50      | 44      | 40      | -              |
| <b>Repeat awards <sup>2</sup></b>            |                       |          |         |         |         |                |
| Mental disabilities - treatment              | 186                   | 28       | 74      | 60      | 24      | -              |
| Mental disabilities - day to day things      | 219                   | 71       | 76      | 50      | 22      | -              |
| Mental disabilities - getting on with people | 206                   | 47       | 79      | 56      | 24      | -              |
| Fits and comas                               | 15                    | 10       | -       | 5       | -       | -              |
| Exhaustion and pain                          | 599                   | 95       | 192     | 198     | 107     | 7              |
| Seeing                                       | 107                   | 34       | 38      | 25      | 10      | -              |
| Hearing                                      | 46                    | 15       | 16      | 9       | 6       | -              |
| Communicating                                | 73                    | 32       | 23      | 9       | 9       | -              |
| Getting around                               | 92                    | 15       | 26      | 22      | 29      | -              |
| Using your hands                             | 145                   | 46       | 49      | 34      | 16      | -              |
| Reaching with your arms                      | 30                    | 11       | 5       | 8       | 6       | -              |

## Notes :

1. Renewal awards are those following on immediately from a previous award without a break.
2. Repeat awards are those where there has been a previous award but there has been a break
3. Claimants may have one or more type(s) of disability. This table records all declared and confirmed disability types for those claimants who complete form DPTC2 prior to renewal/ repeat awards.
4. Figures for DWA awards in Great Britain starting between November 1992 and August 1999 appear in the enquiry statistics for October 1999.

**£5.00**