



INLAND REVENUE
Analysis and Research

Disabled Person's Tax Credit Statistics

Quarterly Enquiry

United Kingdom January 2002



A National Statistics Publication
© Crown Copyright 2002

Contact point for enquiries and requests for further copies:-

Analysis and Research (TCASP)
Inland Revenue
Room 54 - New Wing
Somerset House
London
WC2R 1LB
☎ : 020 - 7438 6275
Fax : 020 - 7438 4329
E-mail : ar_tcasp.ir.sh@gtnet.gov.uk

This, and issues back to October 1999 can be found on the Inland Revenue web site : www.inlandrevenue.gov.uk / statistics

The April 2002 issue is due to be published on the web site on Tuesday 10th September 2002

A NATIONAL STATISTICS PUBLICATION

National Statistics are produced to high professional standards set out in the National Statistics Code of Practice. They undergo regular quality assurance reviews to ensure that they meet customer needs. They are produced free from any political interference.

For general enquiries about National Statistics, contact the National Statistics Public Enquiry Service on

☎ : 020 - 7533 5888
minicom : 01633 812399
E-mail : info@statistics.gov.uk
Fax : 01633 652747
Letters : room DG/18, 1 Drummond Gate, LONDON, SW1V 2QQ

You can also find National Statistics on the internet - go to www.statistics.gov.uk

Disabled Person's Tax Credit Statistics

Quarterly Enquiry

United Kingdom January 2002

Contents	PAGE
Introduction	1
Main findings	1
List of tables	2
Section 1 : Time series	4
Section 2 : Family type	7
Section 3 : Amount of award	10
Section 4 : Earnings and other income	12
Section 5 : Regional analysis	14
Section 6 : Historical DPTC	16
Rates and thresholds, 1999-00 to 2002-03	Inside back cover

Introduction

Disabled Person's' Tax Credit (DPTC) is a tax credit available to adults who are in remunerative work for at least 16 hours per week, and who have an illness or disability which puts them at a disadvantage in getting a job.

Awards of DPTC cover 26 weeks. These tables cover recipients at 31 January 2002 (that is, with awards with start and end dates spanning this date).

DPTC replaced Disability Working Allowance (DWA) from 5 October 1999. Time series of the number of recipients of DPTC and DWA are also shown, but for dates before October 1999 figures are available only for cases dealt with by the Great Britain tax credit office (that is, excluding cases dealt with by the Northern Ireland office).

The figures in the tables are based on a 100% scan of awards. The scan was taken three months after the reference date, by which time almost all awards current at the reference date were processed and entered onto the computer system.

Section 5 shows the number of recipients in each country, and in each region of England. The numbers in each local authority and parliamentary constituency appear in "Working Families' and Disabled Person's Tax Credit Statistics: Geographical analyses", although for a different cycle of months; the February 2002 issue is due to be published on 9 July 2002.

Main Findings

There were 32,777 recipients of DPTC at 31 January 2002, 2 per cent higher than at 31 October 2001.

20,964 of the recipients were single adults (including lone parents), who had an average award of £66.56 per week. 11,813 were in couples; they had an average award of £94.68 per week.

The overall average award was £76.70 per week.

46 per cent of recipients had children. Their average weekly award was £112.74, compared with £45.83 for recipients with no children.

For 42 per cent of recipients, higher rate Disability living allowance, or an analogous benefit, was the main qualifying benefit. Lower rate Disability living allowance was the main qualifying benefit for a further 21 per cent.

For recipients with children, 63% of awards were over £100 per week.

The average gross weekly earnings of the recipients was £135.

List of Tables

Section 1 : Time series

Table 1.1	DWA/DPTC recipients by family type, January 1993 - January 2002.
Chart 1	DWA/DPTC recipients by family type, GB office, Jan 1993 - Jan 2002
Table 1.2	Average DWA/DPTC award by family type of recipients, January 1993 - January 2002.
Chart 2	Average DWA/DPTC award by family type of recipients, GB office, January 1993 - January 2002.

Section 2 : Family type

Table 2.1	Age and gender of recipients, and whether with children.
Chart 3	Recipients by age, and whether with children.
Table 2.2	Gender and family type of recipients, and average weekly award.
Chart 4	Family type and gender of recipients.
Table 2.3	Main qualifying benefit of recipients, by whether with children, and average weekly award.

Section 3 : Amount of award

Table 3.1	Family type and gender of recipients, by weekly amount of award.
Table 3.2	Family size and type of recipients, by weekly amount of award.
Chart 5	Recipients by number of children in family, and by family type.

Section 4 : Earnings and other income

- Table 4.1 Gross weekly earnings of recipients, by family type.
- Chart 6 Recipients by gross weekly earnings, and by whether with children.
- Table 4.2 Recipients whose family incomes include social security benefits which are brought to account, by family type.
- Table 4.3 Recipients whose families receive other income which is brought to account, by family type.

Section 5 : Regional analysis

- Table 5.1 Recipients in each Government Office Region, by employment status and family type.
- Table 5.2 Average weekly award for recipients in each Government Office Region, by employment status and family type.

Section 6 : Historical DPTC

- Table 6.1 Main qualifying benefit of recipients of awards starting between October 1999 and January 2002, by type of award.
- Table 6.2 : Recipients of awards starting between October 1999 and January 2002 by type of award and family type.
- Table 6.3 : Disallowances between October 1999 and January 2002 by reason of disallowance.
- Table 6.4 : Recipients of renewal and repeat awards starting between October 1999 and January 2002 by disability type and age.

Section 1 : Time series

This section shows back quarterly series for the number of recipients of Disability Working Allowance and Disabled Person's Tax Credit, and their average awards.

For October 1999 and January 2000 the recipients are a mixture of Disability Working Allowance and Disabled Person's Tax Credit recipients. Disability Working Allowance recipients are those with awards starting up to 30 September 1999 and still current at the reference date.

From April 2000, all the awards are of Disabled Person's Tax Credit.

The figures for October 2001 are slightly different to those published last time, as they take account of later information, including on awards made after the scan for the previous publication and then backdated, and changes to termination dates.

Table 1.1 : DWA/DPTC recipients by family type, January 1993 - January 2002.*United Kingdom*

	All recipients		In couples		Singles	
	GB office ¹	Total	GB office ¹	Total	GB office ¹	Total
Jan-93	904	-	361	-	543	-
Jan-94	3,722	-	1,392	-	2,330	-
Jan-95	5,277	-	1,990	-	3,287	-
Jan-96	8,406	-	3,186	-	5,220	-
Apr-96	9,416	-	3,638	-	5,778	-
Jul-96	10,577	-	4,049	-	6,528	-
Oct-96	11,409	-	4,359	-	7,050	-
Jan-97	11,979	-	4,620	-	7,359	-
Apr-97	12,689	-	4,881	-	7,808	-
Jul-97	13,575	-	5,191	-	8,384	-
Oct-97	14,306	-	5,405	-	8,901	-
Jan-98	14,564	-	5,500	-	9,064	-
Apr-98	15,145	-	5,753	-	9,392	-
Jul-98	15,910	-	6,040	-	9,870	-
Oct-98	16,353	-	6,125	-	10,228	-
Jan-99	16,483	-	6,093	-	10,390	-
Apr-99	16,904	-	6,263	-	10,641	-
Jul-99	17,305	-	6,400	-	10,905	-
Oct-99	18,236	19,445	6,742	7,207	11,494	12,238
Jan-00	19,684	21,017	7,227	7,740	12,457	13,277
Apr-00	21,848	23,373	8,120	8,725	13,728	14,648
Jul-00	23,714	25,355	8,932	9,574	14,782	15,781
Oct-00	25,094	26,830	9,329	9,992	15,765	16,838
Jan-01	26,132	27,954	9,689	10,368	16,443	17,586
Apr-01	27,296	29,225	10,112	10,827	17,184	18,398
Jul-01	28,857	30,904	10,587	11,335	18,270	19,569
Oct-01	29,999	32,112	10,919	11,689	19,080	20,423
Jan-02	30,633	32,777	11,031	11,813	19,602	20,964

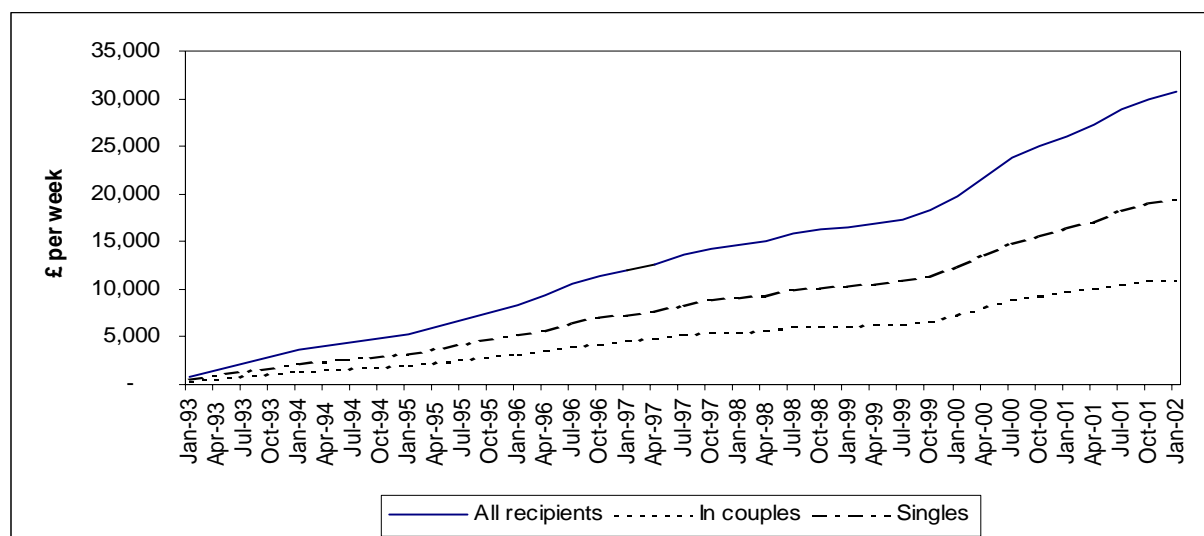
¹ Cases dealt with by the Northern Ireland tax credit office are excluded from the "GB office" series.**Chart 1 : DWA/DPTC recipients by family type, GB office, Jan 1993 - Jan 2002**

Table 1.2 : Average DWA/DPTC award by family type of recipients, January 1993 - January 2002.

United Kingdom, £ per week

	All recipients		In couples		Singles	
	GB office ¹	Total	GB office ¹	Total	GB office ¹	Total
Jan-93	35.37	-	43.59	-	29.91	-
Jan-94	40.71	-	53.03	-	33.36	-
Jan-95	44.79	-	58.93	-	36.23	-
Jan-96	54.35	-	70.25	-	44.65	-
Apr-96	54.72	-	70.84	-	44.57	-
Jul-96	55.97	-	73.10	-	45.35	-
Oct-96	56.92	-	74.22	-	46.23	-
Jan-97	56.69	-	74.06	-	45.78	-
Apr-97	57.39	-	74.89	-	46.44	-
Jul-97	58.46	-	76.47	-	47.30	-
Oct-97	58.37	-	77.22	-	46.92	-
Jan-98	57.52	-	75.83	-	46.41	-
Apr-98	57.84	-	76.08	-	46.67	-
Jul-98	58.63	-	77.10	-	47.33	-
Oct-98	58.97	-	77.98	-	47.58	-
Jan-99	59.05	-	78.89	-	47.41	-
Apr-99	59.53	-	79.38	-	47.84	-
Jul-99	60.13	-	80.31	-	48.29	-
Oct-99	61.73	62.09	81.73	82.16	49.99	50.27
Jan-00	65.78	66.21	85.16	85.87	54.53	54.76
Apr-00	69.53	70.14	88.24	89.17	58.47	58.81
Jul-00	71.31	71.85	90.45	91.37	59.75	60.01
Oct-00	72.98	73.50	93.41	94.26	60.90	61.19
Jan-01	72.65	73.19	92.45	93.29	60.99	61.34
Apr-01	72.35	72.89	91.18	92.06	61.27	61.61
Jul-01	74.20	74.72	92.89	93.72	63.38	63.71
Oct-01	76.32	76.87	94.50	95.35	65.91	66.29
Jan-02	76.18	76.70	93.92	94.68	66.20	66.56

¹ Cases dealt with by the Northern Ireland tax credit office are excluded from the "GB office" series.

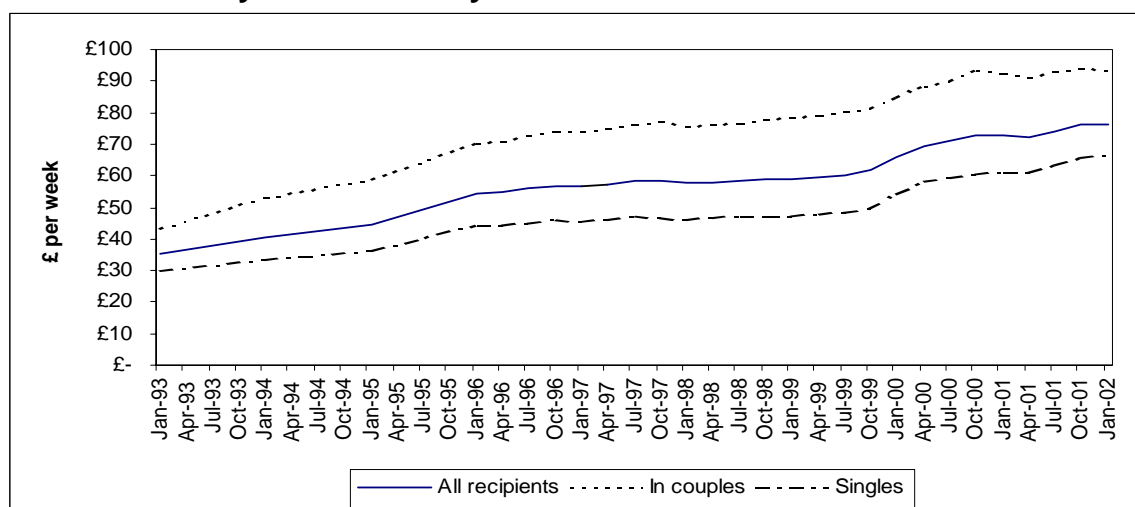
Chart 2 : Average DWA/DPTC award by family type of recipients, GB office, January 1993 - January 2002.

Table 2.1 : Age and gender of recipients, and whether with children.

	<i>United Kingdom</i>				
	All recipients	Male	%	Female	%
All cases	32,777	18,098	55	14,679	45
Under 20	563	361	64	202	36
20 - 29	6,359	3,476	55	2,883	45
30 - 39	11,141	5,803	52	5,338	48
40 - 49	9,200	5,033	55	4,167	45
50 - 59	4,880	2,889	59	1,991	41
60 and over	634	536	85	98	15
With children	15,119	7,726	51	7,393	49
Under 20	20	9	45	11	55
20 - 29	1,470	611	42	859	58
30 - 39	6,932	3,240	47	3,692	53
40 - 49	5,357	2,911	54	2,446	46
50 - 59	1,248	874	70	374	30
60 and over	92	81	88	11	12
Without children	17,658	10,372	59	7,286	41
Under 20	543	352	65	191	35
20 - 29	4,889	2,865	59	2,024	41
30 - 39	4,209	2,563	61	1,646	39
40 - 49	3,843	2,122	55	1,721	45
50 - 59	3,632	2,015	55	1,617	45
60 and over	542	455	84	87	16

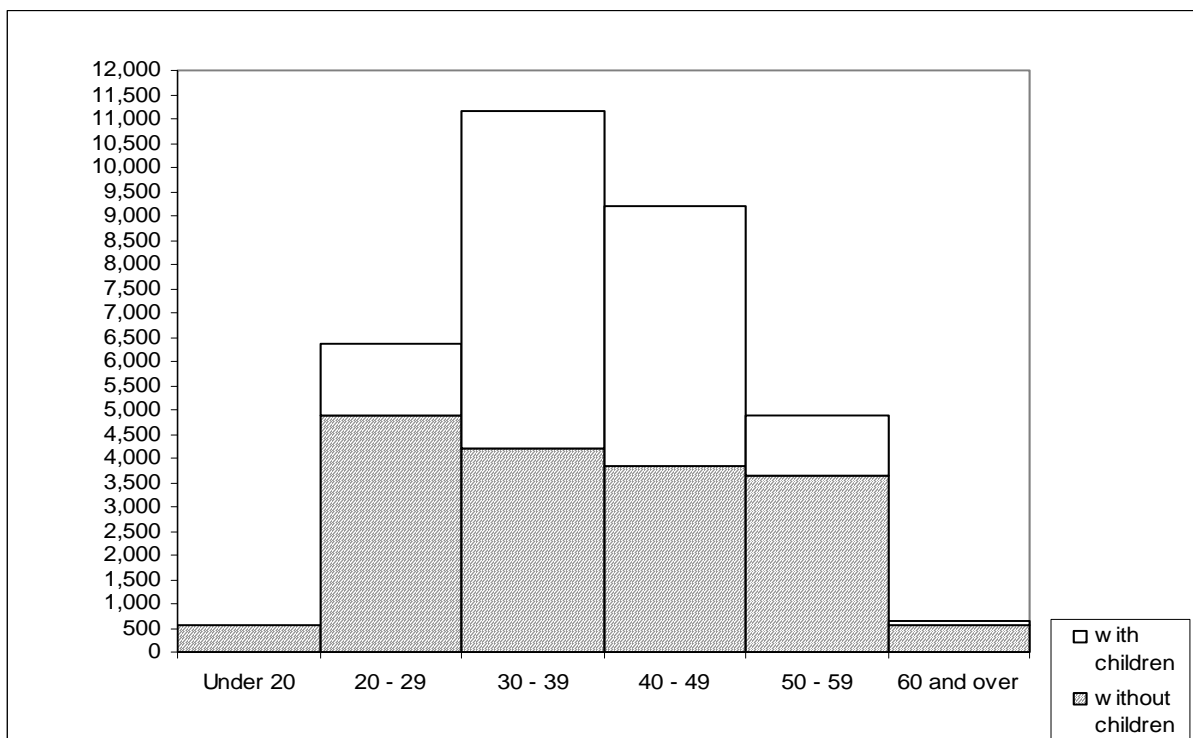
Chart 3 : Recipients by age, and whether with children.

Table 2.2 : Gender and family type of recipients, and average weekly award.

		<i>United Kingdom</i>
	All recipients	Average award £ per week
All cases	32,777	76.70
Male - in couples	9,523	97.87
Female - in couples	2,290	81.43
Male -single	8,575	46.09
Female -single	12,389	80.73
With children	15,119	112.74
Male - in couples	7,193	108.94
Female - in couples	1,539	93.73
Male -single	533	107.25
Female -single	5,854	122.92
Without children	17,658	45.83
Male - in couples	2,330	63.72
Female - in couples	751	56.24
Male -single	8,042	42.03
Female -single	6,535	42.94

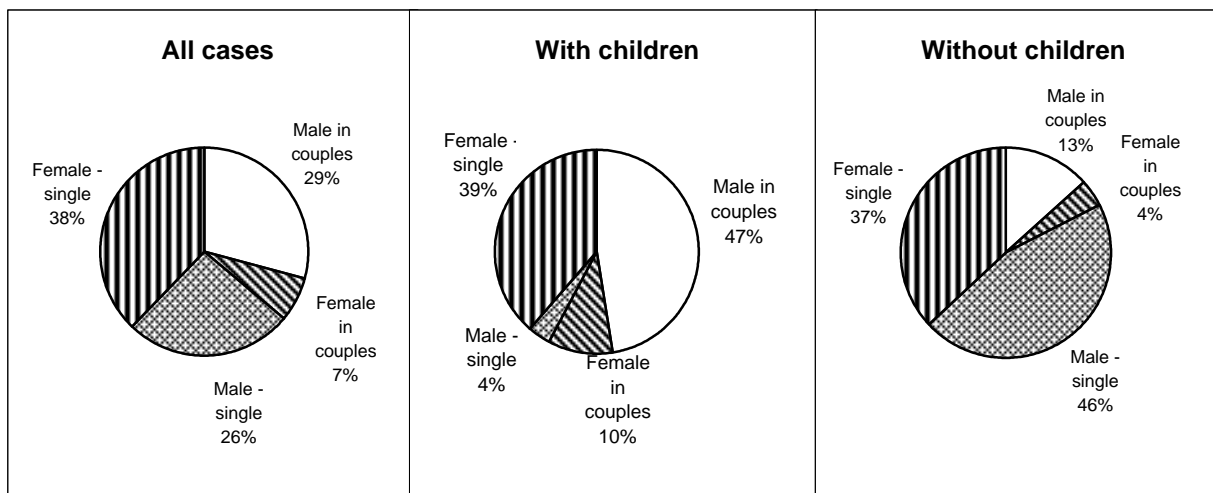
Chart 4 : Family type and gender of recipients.

Table 2.3 : Main qualifying benefit of recipients, by whether with children, and average weekly award.

	<i>United Kingdom</i>	
	Recipients	Average award £ per week
All cases	32,777	76.70
Higher rate Disability living allowance and analogous benefits	13,923	72.86
Lower rate Disability living allowance	6,776	66.92
Severe disablement allowance	2,146	63.16
Disability premium in Income support /Jobseeker's allowance	4,570	98.30
Disability premium in Housing benefit	34	85.54
Disability premium in Council tax benefit	17	80.37
Incapacity benefit (higher rate short term)	1,087	89.37
Incapacity benefit (long term)	4,155	85.16
Fast-Track entrants ¹	69	85.39
With children	15,119	112.74
Higher rate Disability living allowance and analogous benefits	6,432	105.56
Lower rate Disability living allowance	2,553	107.84
Severe disablement allowance	471	120.98
Disability premium in Income support /Jobseeker's allowance	2,738	129.30
Disability premium in Housing benefit	14	130.66
Disability premium in Council tax benefit	5	130.61
Incapacity benefit (higher rate short term)	652	114.42
Incapacity benefit (long term)	2,222	116.24
Fast-Track entrants ¹	32	122.47
Without children	17,658	45.83
Higher rate Disability living allowance and analogous benefits	7,491	44.79
Lower rate Disability living allowance	4,223	42.19
Severe disablement allowance	1,675	46.90
Disability premium in Income support /Jobseeker's allowance	1,832	51.97
Disability premium in Housing benefit	20	53.96
Disability premium in Council tax benefit	12	59.43
Incapacity benefit (higher rate short term)	435	51.81
Incapacity benefit (long term)	1,933	49.44
Fast-Track entrants ¹	37	53.33

¹ Entrants through the Fast-Track must be receiving one of Statutory sick pay, Occupational sick pay, Incapacity benefit (lower rate short term), Income support paid on grounds of incapacity or National insurance credits awarded on the grounds of incapacity for work.

Table 3.1 : Family type and gender of recipients, by weekly amount of award.*United Kingdom*

	All cases	Weekly amount of award						
		Under £20.00	£20.00 - £39.99	£40.00 - £59.99	£60.00 - £79.99	£80.00 - £99.99	£100.00 - £119.99	£120.00 and over
With and without children								
All recipients	32,777	2,402	5,782	6,637	5,301	2,788	3,821	6,046
Male	18,098	1,421	3,464	3,669	3,117	1,755	1,670	3,002
Female	14,679	981	2,318	2,968	2,184	1,033	2,151	3,044
In couples	11,813	649	1,081	1,361	1,630	1,990	1,817	3,285
Male	9,523	446	776	1,008	1,300	1,647	1,508	2,838
Female	2,290	203	305	353	330	343	309	447
Singles	20,964	1,753	4,701	5,276	3,671	798	2,004	2,761
Male	8,575	975	2,688	2,661	1,817	108	162	164
Female	12,389	778	2,013	2,615	1,854	690	1,842	2,597
With children								
All recipients	15,119	387	663	1,027	1,519	1,933	3,544	6,046
Male	7,726	250	417	635	905	1,054	1,463	3,002
Female	7,393	137	246	392	614	879	2,081	3,044
In couples	8,732	347	552	799	1,033	1,176	1,540	3,285
Male	7,193	245	397	607	836	969	1,301	2,838
Female	1,539	102	155	192	197	207	239	447
Singles	6,387	40	111	228	486	757	2,004	2,761
Male	533	5	20	28	69	85	162	164
Female	5,854	35	91	200	417	672	1,842	2,597
Without children								
All recipients	17,658	2,015	5,119	5,610	3,782	855	277	-
Male	10,372	1,171	3,047	3,034	2,212	701	207	-
Female	7,286	844	2,072	2,576	1,570	154	70	-
In couples	3,081	302	529	562	597	814	277	-
Male	2,330	201	379	401	464	678	207	-
Female	751	101	150	161	133	136	70	-
Singles	14,577	1,713	4,590	5,048	3,185	41	-	-
Male	8,042	970	2,668	2,633	1,748	23	-	-
Female	6,535	743	1,922	2,415	1,437	18	-	-

Table 3.2 : Family size and type of recipients, by weekly amount of award.*United Kingdom*

	All cases	Weekly amount of award							Average award £ per week
		Under £20.00	£20.00 - £39.99	£40.00 - £59.99	£60.00 - £79.99	£80.00 - £99.99	£100.00 - £119.99	£120.00 and over	
All recipients	32,777	2,402	5,782	6,637	5,301	2,788	3,821	6,046	76.70
No children	17,658	2,015	5,119	5,610	3,782	855	277	-	45.83
One child	6,146	188	351	530	804	1,051	2,373	849	94.05
Two children	5,549	159	233	394	532	646	859	2,726	111.69
Three children	2,375	35	69	88	156	199	253	1,575	135.74
Four or more children	1,049	5	10	15	27	37	59	896	175.78
In couples	11,813	649	1,081	1,361	1,630	1,990	1,817	3,285	94.68
No children	3,081	302	529	562	597	814	277	-	61.89
One child	2,614	160	261	358	425	462	666	282	80.99
Two or more children	6,118	187	291	441	608	714	874	3,003	117.05
Singles	20,964	1,753	4,701	5,276	3,671	798	2,004	2,761	66.56
No children	14,577	1,713	4,590	5,048	3,185	41	-	-	42.44
One child	3,532	28	90	172	379	589	1,707	567	103.71
Two or more children	2,855	12	21	56	107	168	297	2,194	143.75

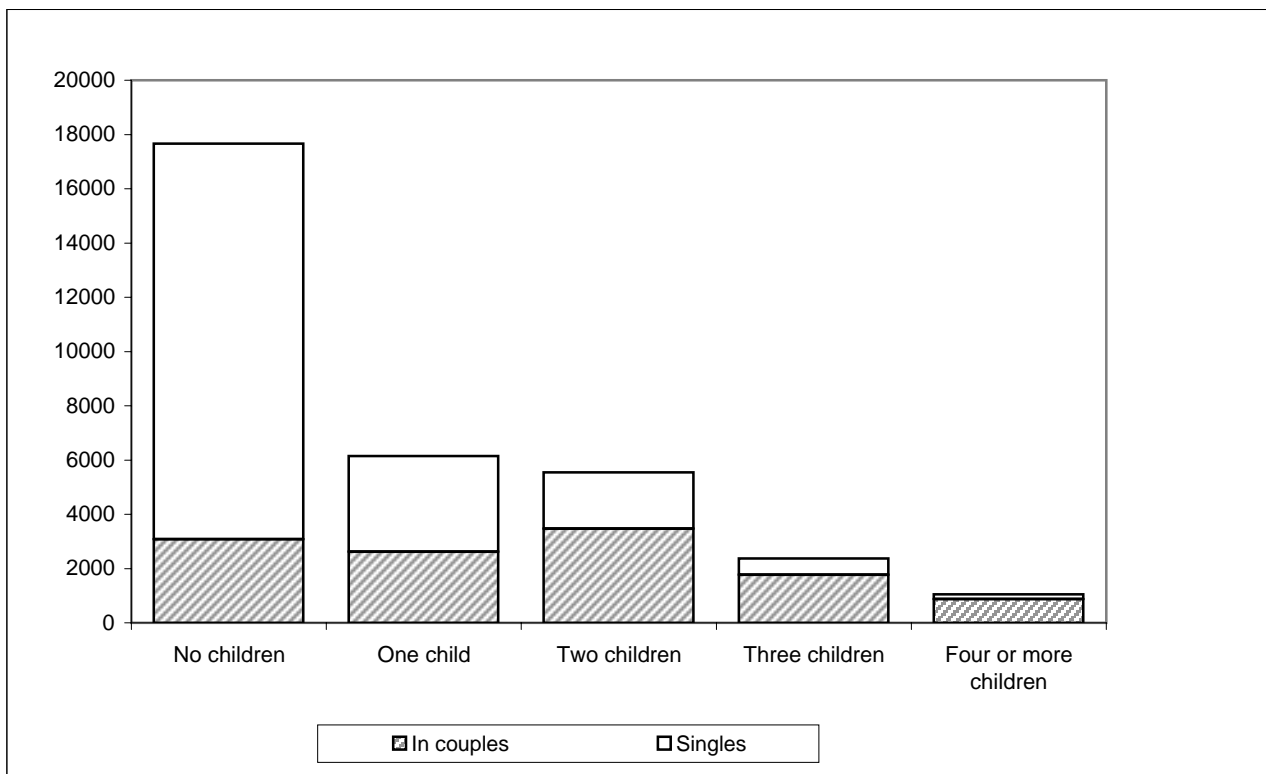
Chart 5 : Recipients by number of children in family, and by family type.

Table 4.1 : Gross weekly earnings of recipients, by family type.*United Kingdom*

	All cases	Gross weekly earnings of recipients						Average gross earnings £ per week
		Under £40.00	£40.00 - £79.99	£80.00 - £119.99	£120.00 - £159.99	£160.00 - £199.99	£200.00 and over	
All recipients	32,777	1,995	6,671	7,747	5,315	4,929	6,120	134.86
In couples	11,813	1,101	2,290	2,141	1,393	1,533	3,355	146.59
Singles	20,964	894	4,381	5,606	3,922	3,396	2,765	128.26
With children	15,119	960	2,893	3,128	1,994	1,816	4,328	151.06
In couples	8,732	693	1,536	1,472	981	1,132	2,918	158.17
Singles	6,387	267	1,357	1,656	1,013	684	1,410	141.34
Without children	17,658	1,035	3,778	4,619	3,321	3,113	1,792	121.00
In couples	3,081	408	754	669	412	401	437	113.79
Singles	14,577	627	3,024	3,950	2,909	2,712	1,355	122.53

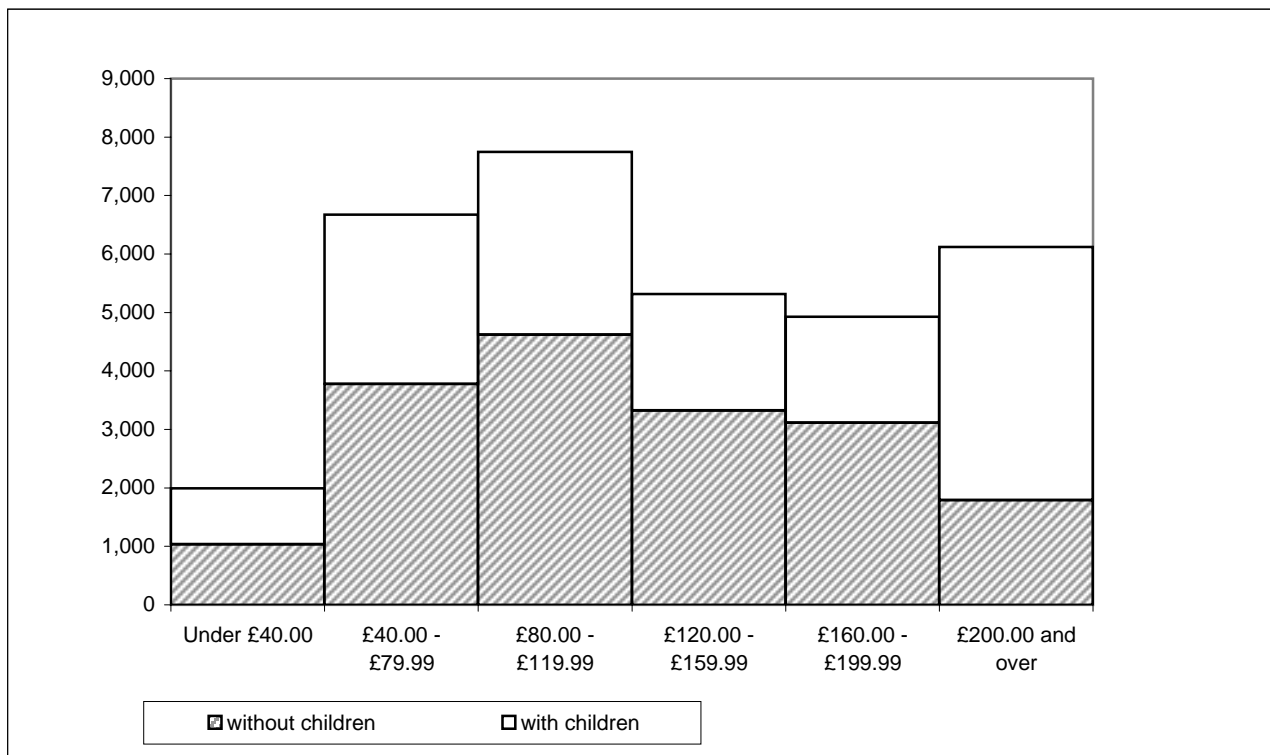
Chart 6 : Recipients by gross weekly earnings, and by whether with children.

Table 4.2 : Recipients whose family incomes include social security benefits which are brought to account, by family type.

United Kingdom

	All recipients	In couples		Singles
		To DPTC recipient	To partner only	
Pensions:				
Retirement pension	312	54	192	66
Bereavement / widow's benefit	159	-	-	159
War pension	48	37	3	8
Unemployment related benefits:				
Jobseeker's allowance	57	-	57	-
Sickness and disability benefits:				
Incapacity benefit	970	-	970	-
Severe disablement allowance	328	-	328	-
Industrial injuries disablement benefit	713	441	50	222
War disablement pension	152	110	13	29
Carer benefits:				
Invalid care allowance	1,227	51	1,082	94
Others:				
	27	6	-	21

Note: Certain benefits are excluded as they are not brought to account when calculating the level of award. Examples are Child benefit, Housing benefit, Council tax benefit and Disability living allowance.

Table 4.3 : Recipients whose families receive other income which is brought to account, by family type.

United Kingdom

	All recipients	In couples	Singles
All cases			
Benefits in kind	36	19	17
Rent and others	1,356	790	566
With children			
Benefits in kind	15	-	-
Rent and others	664	455	209
Without children			
Benefits in kind	21	8	13
Rent and others	692	335	357

Section 5 : Regional analysis

This section shows the number of recipients in each country, and in each region of England. The numbers in each local authority and parliamentary constituency appear in "Working Families' and Disabled Person's Tax Credit Statistics: Geographical analyses", although for a different cycle of months; the February 2002 issue is due be published on 9 July 2002.

For each recipient, the country and region was identified by matching the postcode recorded as part of the correspondence address against the 2001 Version B Postcode Directory supplied by the Office for National Statistics. The regions thereby identified were according to their definitions at the end of December 2000.

Not all recipients have complete and accurate postcodes recorded. Each case is however allocated to a country, if necessary based on the rest of the address. Recipients in England are allocated to a region if the postcode, or the element present, is sufficient to do so with certainty.

Table 5.1 Recipients in each Government Office Region, by employment status and family type.

	All recipients			Employees			Self employed ¹		
	All	In couples	Singles	All	In couples	Singles	All	In couples	Singles
United Kingdom	32,777	11,813	20,964	28,257	9,042	19,215	4,520	2,771	1,749
England	24,833	9,120	15,713	21,341	6,981	14,360	3,492	2,139	1,353
North East	2,072	827	1,245	1,780	640	1,140	292	187	105
North West	5,067	1,821	3,246	4,346	1,362	2,984	721	459	262
Yorkshire and the Humber	3,208	1,307	1,901	2,781	1,040	1,741	427	267	160
East Midlands	2,224	924	1,300	1,904	720	1,184	320	204	116
West Midlands	2,968	1,104	1,864	2,593	857	1,736	375	247	128
Eastern	1,955	693	1,262	1,664	519	1,145	291	174	117
London	1,751	484	1,267	1,535	383	1,152	216	101	115
South East	2,704	884	1,820	2,337	671	1,666	367	213	154
South West	2,868	1,074	1,794	2,387	787	1,600	481	287	194
Region unknown	16	2	14	14	2	12	2	-	2
Wales	2,676	1,036	1,640	2,261	803	1,458	415	233	182
Scotland	3,124	875	2,249	2,829	709	2,120	295	166	129
Northern Ireland	2,144	782	1,362	1,826	549	1,277	318	233	85

Table 5.2 Average weekly award for recipients in each Government Office Region, by employment status and family type.

	All recipients			Employees			Self employed ¹		
	All	In couples	Singles	All	In couples	Singles	All	In couples	Singles
United Kingdom	76.70	94.68	66.56	71.81	86.82	64.75	107.23	120.35	86.43
England	75.82	94.37	65.06	70.84	86.79	63.08	106.29	119.12	86.02
North East	75.36	90.15	65.53	71.28	84.64	63.78	100.21	109.01	84.55
North West	80.15	97.07	70.65	75.29	88.85	69.09	109.44	121.44	88.40
Yorkshire and The Humber	77.66	92.34	67.56	73.08	85.35	65.75	107.49	119.57	87.33
East Midlands	78.05	96.15	65.18	73.01	89.86	62.77	108.03	118.36	89.86
West Midlands	74.72	93.59	63.53	70.05	85.79	62.27	107.00	120.67	80.63
Eastern	72.72	92.42	61.90	66.75	83.36	59.22	106.87	119.42	88.21
London	72.79	96.60	63.69	69.16	90.04	62.22	98.58	121.46	78.48
South East	70.86	92.69	60.26	65.49	83.89	58.08	105.10	120.40	83.93
South West	74.60	96.45	61.51	68.13	88.30	58.20	106.69	118.81	88.77
Wales	81.66	94.36	73.64	77.74	88.18	71.99	103.03	115.63	86.90
Scotland	74.35	88.65	68.78	70.91	81.29	67.44	107.30	120.12	90.80
Northern Ireland	84.03	105.48	71.72	77.26	92.28	70.81	122.91	136.58	85.42

1. Recipient has self employment income source and no source of income as an employee

Table 6.1 : Main qualifying benefit of recipients of awards starting between October 1999 and January 2002, by type of award.

		<i>United Kingdom</i>
	All cases	Average award £ per week
All awards		
All qualifying benefits	134,442	73.86
Disability living allowance - higher rate & analogous benefits	57,324	70.41
Disability living allowance - lower rate	27,980	64.46
Severe disablement benefit	9,283	61.10
Disability premium in IS/JSA	18,294	93.90
Incapacity benefit (higher rate short term)	4,422	85.10
Incapacity benefit (long term)	16,762	83.39
Other ¹	377	80.12
New awards ²		
All qualifying benefits	32,616	73.32
Disability living allowance - higher rate & analogous benefits	12,263	67.15
Disability living allowance - lower rate	6,261	65.95
Severe disablement benefit	2,270	62.15
Disability premium in IS/JSA	5,398	93.85
Incapacity benefit (higher rate short term)	1,451	82.30
Incapacity benefit (long term)	4,874	78.05
Other ¹	99	74.24
Renewal awards ³		
All qualifying benefits	93,741	74.47
Disability living allowance - higher rate & analogous benefits	40,917	71.71
Disability living allowance - lower rate	19,782	64.28
Severe disablement benefit	6,631	60.81
Disability premium in IS/JSA	12,138	94.30
Incapacity benefit (higher rate short term)	2,810	86.76
Incapacity benefit (long term)	11,218	85.91
Other ¹	245	82.96
Repeat awards ⁴		
All qualifying benefits	8,085	68.86
Disability living allowance - higher rate & analogous benefits	4,144	67.29
Disability living allowance - lower rate	1,937	61.53
Severe disablement benefit	382	59.74
Disability premium in IS/JSA	758	84.95
Incapacity benefit (higher rate short term)	161	81.54
Incapacity benefit (long term)	670	79.94
Other ¹	33	76.73

¹Disability premium in Housing benefit or Council tax benefit, plus Fast-Track entrants.

²New awards are those where the recipient has not received DWA or DPTC within the previous 2 years.

³Renewal awards are those following on immediately from a previous award, without a break.

⁴Repeat awards are those where the recipient had a previous award but there has been a break between awards of up to 2 years.

Figures for DWA awards in Great Britain starting between November 1992 and September 1999 appear in the enquiry statistics for October 1999.

**Table 6.2 : Recipients of awards starting between October 1999 and January 2002
by type of award and family type.**

<i>United Kingdom</i>					
	All Cases	In couples		Singles	
		Male	Female	Male	Female
All awards	134,442	40,763	9,107	35,698	48,874
New awards ¹	32,616	9,332	2,785	8,036	12,463
Renewal awards ²	93,741	29,252	5,722	25,195	33,572
Repeat awards ³	8,085	2,179	600	2,467	2,839

¹New awards are those where the recipient has not received DWA or DPTC within the previous 2 years.

²Renewal awards are those following on immediately from a previous award, without a break.

³Repeat awards are those where the recipient had a previous award but there has been a break between awards of up to 2 years.

Figures for DWA awards in Great Britain starting between November 1992 and September 1999 appear in the enquiry statistics for October 1999.

Table 6.3 : : Disallowances between October 1999 and January 2002 by reason of disallowance.

		<i>United Kingdom</i>
		Number of disallowances
All disallowances		24,461
All A codes		110
A1	Applicant was not in UK	102
A2	Applicant was not normally living in UK	2
A3	Partner not normally living in UK	1
A4	All applicants earnings from outside UK	2
A5	Neither applicant nor partner have UK earnings	1
A7	All partner earnings outside UK (applicant may have earnings inside UK)	1
A9	Failure to provide information on residency	1
All C codes		259
C1	Applicant's capital exceeds £16,000	203
C2	Applicant and partner's capital exceeds £16,000	36
C3	Failure to provide information about value of applicant and partner's capital	4
C4	Failure to provide information about value of applicant's capital	16
All D codes		5,424
D1	Applicant not doing paid work for an average of 16 hours a week or more	1,747
D2	Applicant not in paid work	1,765
D5	Applicant not engaged in remunerative work in relevant weeks	1,553
D7	Applicant not normally engaged in paid work	327
D11	Applicant not treated as in paid work - charity	2
D15	Applicant could not be treated as in paid work on the information available	30
All E codes		5,346
E1	Applicant's income higher than the level at which DPTC would become payable	4,814
E2	Applicant's entitlement less than the minimum amount of DPTC	123
E3	On the information available, the applicant or partner's income was higher then the level at which DPTC would become payable	409
All other codes		13,322
G1	Any disallowance not covered by other categories	437
G2	Applicant not fulfilled National Insurance Number requirements	1
G3	Partner not fulfilled National Insurance Number requirements	6
I	DPTC claim made more than 6 weeks before DPTC end date	3,635
J1, J2	Qualifying benefit test not satisfied	6,024
J3, K1	Disability test not satisfied	1,455
J4	Fast-track application: reduction in earnings rule not satisfied	5
L	Lapsed claim	34
W	Claimant has withdrawn claim	1,725

Figures for DWA disallowances in Great Britain occurring between November 1992 and September 1999 appear in the enquiry statistics for October 1999.

Table 6.4 : Recipients of renewal and repeat awards starting between October 1999 and January 2002 by disability type and age.

United Kingdom

	All ages	Under 30	30 - 39	40 - 49	50 - 59	60 and over
Renewal awards ¹						
Mental disabilities - treatment	7,538	895	2,905	2,569	1,107	62
Mental disabilities - day to day things	8,620	2,445	2,942	2,090	1,037	106
Mental disabilities - getting on with people	7,359	1,568	2,810	2,063	866	52
Fits and comas	713	150	313	170	74	6
Exhaustion and pain	27,064	2,677	8,713	9,085	5,731	858
Seeing	2,793	542	1,041	764	385	61
Hearing	1,613	305	601	400	265	42
Communicating	2,850	801	969	641	381	58
Getting around	3,445	315	1,034	1,193	747	156
Using your hands	4,321	818	1,473	1,266	680	84
Reaching with your arms	692	89	209	211	167	16
Repeat awards ²						
Mental disabilities - treatment	697	94	271	240	92	-
Mental disabilities - day to day things	722	225	261	159	71	6
Mental disabilities - getting on with people	665	163	262	172	68	-
Fits and comas	57	25	21	11	-	-
Exhaustion and pain	1,863	275	608	629	325	26
Seeing	283	81	109	75	18	-
Hearing	165	33	68	36	22	6
Communicating	268	83	100	52	28	5
Getting around	242	42	72	70	58	-
Using your hands	417	123	138	100	56	-
Reaching with your arms	80	18	18	24	20	-

¹Renewal awards are those following on immediately from a previous award, without a break.

²Repeat awards are those where the recipient had a previous award but there has been a break between awards of up to 2 years.

Figures for DWA awards in Great Britain starting between November 1992 and September 1999 appear in the enquiry statistics for October 1999.

Claimants may have one or more type(s) of disability. This table records all declared and confirmed disability types for those claimants who complete form DPTC2 prior to renewal/ repeat awards.

Disabled Person's Tax Credit

Rates and thresholds, 1999-00 to 2002-03¹

		1999-00	2000-01	2001-02	2002-03
Basic tax credit					
Lone parent or couple	£ per week	83.55	84.90	91.25 ⁸	95.30 ¹⁰
Single person	£ per week	54.30	55.15	61.05 ⁸	62.10
30-hour tax credit	£ per week	11.05	11.25	11.45	11.65
Child tax credit					
Under 11	£ per week	19.85	25.60 ⁷	26.00	26.45
11-16 ²	£ per week	20.90	25.60 ⁷	26.00	26.45
16-18 ²	£ per week	25.95	26.35	26.75	27.20
Disabled child tax credit ³	£ per week	21.90	22.25	30.00	35.50
Enhanced disability tax credit					
Lone parent or couple	£ per week	-	-	16.00	16.25
Single person	£ per week	-	-	11.05	11.25
Child ⁴	£ per week	-	-	41.05	46.75
Childcare tax credit					
Maximum eligible costs allowed					
1 child ⁵	£ per week	100.00	100.00	135.00 ⁹	135.00
2+ children ⁵	£ per week	150.00	150.00	200.00 ⁹	200.00
Percentage of allowed childcare costs in credit					
		70%	70%	70%	70%
Savings					
Amount disregarded	£	3,000	3,000	3,000	3,000
£1 per week income assumed					
per additional:	£	250	250	250	250
Upper limit	£	16,000	16,000	16,000	16,000
Reduction of award through income⁶					
Income threshold - lone parent or couple	£ per week	90.00	91.45	92.90	94.50
Income threshold - single person	£ per week	70.00	71.10	72.25	73.50
Income taper rate		55%	55%	55%	55%
Minimum award	£ per week	0.50	0.50	0.50	0.50

Notes:

- ¹ The rates apply to awards starting from the first Tuesday after 5 April in each year, unless otherwise stated.
- ² These rates apply to awards starting from the September following the child's relevant birthday.
- ³ Payable in addition to the child tax credit.
- ⁴ Payable instead of the disabled child tax credit.
- ⁵ Number of children for whom eligible childcare costs are incurred.
- ⁶ Income is net of tax, national insurance contributions and half of pension contributions, and excludes Child benefit, Housing benefit, Council tax benefit, maintenance and investment income. The award is reduced by the excess of income over the threshold, multiplied by the income taper rate.
- ⁷ For awards starting from 6 June 2000. £21.25 for awards starting during April and May 2000
- ⁸ For awards starting from 5 June 2001. £5.00 lower for awards starting during April and May 2001
- ⁹ For awards starting from 5 June 2001. The 2000-01 level for awards starting during April and May 2001.
- ¹⁰ For awards starting from 4 June 2002. £2.50 lower for awards starting during April and May 2002

£5.00