



INLAND REVENUE
Analysis and Research

Disabled Person's Tax Credit Statistics

Quarterly Enquiry

United Kingdom January 2001



A National Statistics Publication
© Crown Copyright 2001

Contact point for enquiries and requests for further copies:-

Analysis and Research (TCASP)
Inland Revenue
Room 39A - New Wing
Somerset House
London
WC2R 1LB
☎ : 020 - 7438 6275
Fax : 020 - 7438 4329
E-mail : ar_tcasp.ir.sh@gtnet.gov.uk

This, and issues back to October 1999 can be found on the Inland Revenue web site : www.inlandrevenue.gov.uk / statistics

The April 2001 issue is due to be published on the web site on Tuesday 11th September 2001.

A NATIONAL STATISTICS PUBLICATION

National Statistics are produced to high professional standards set out in the National Statistics Code of Practice. They undergo regular quality assurance reviews to ensure that they meet customer needs. They are produced free from any political interference.

For general enquiries about National Statistics, contact the National Statistics Public Enquiry Service on

☎ : 020 - 7533 5888
minicom : 01633 812399
E-mail : info@statistics.gov.uk
Fax : 01633 652747
Letters : room DG/18, 1 Drummond Gate, LONDON, SW1V 2QQ

You can also find National Statistics on the internet - go to www.statistics.gov.uk

Disabled Person's Tax Credit Statistics

Quarterly Enquiry

United Kingdom January 2001

Contents	PAGE
Introduction	1
Main findings	1
List of tables	2
Section 1 : Time series	4
Section 2 : Family type	7
Section 3 : Amount of award	10
Section 4 : Earnings and other income	12
Section 5 : Geographical analysis	14
Section 6 : Historical DPTC	28

Introduction

Disabled Person's Tax Credit (DPTC) replaced Disability Working Allowance (DWA) from 5th October 1999. It is a tax credit available to people who are working at least sixteen hours a week and who have an illness or disability which puts them at a disadvantage in getting a job.

The tables cover DPTC recipients at 31 January 2001 (that is, people with awards with start and end dates spanning this date). There have been no recipients of DWA since the end of March 2000. Time series covering both DWA and DPTC recipients are also shown, but for dates before October 1999 figures are available only for awards made in Great Britain (excluding Northern Ireland).

The figures are based on a 100% scan of awards. They have been compiled four months after the reference date, by which time almost all awards current at the reference date have been processed and entered onto the computer system. The tables cover awards made in the United Kingdom, unless otherwise stated. To ensure that information about individuals is not disclosed, most cells containing less than five cases are shown as '-', and some other cells are bracketed together.

The problems with the classification of recipients between employees and self employed have been resolved, and publication of figures using this classification has been resumed. However, the classification is not consistent with that used earlier.

Main Findings

There were 27,932 recipients of DPTC at 31 January 2001, 4 per cent higher than at 31st October 2000.

17,586 of the recipients were single adults (including lone parents), who had an average award of £61.42 per week. 10,346 were in couples, who had an average award of £93.32 per week.

The overall average award was £73.23 per week.

46 per cent of recipients had children. Their average weekly award was £109.49, compared with £42.94 for recipients with no children.

For 42 per cent of recipients higher rate Disability living allowance, or an analogous benefit, was the main qualifying benefit. Lower rate Disability living allowance was the main qualifying benefit for a further 21 per cent.

For recipients with children, 63% of awards were over £100 per week.

The average gross weekly earnings of the recipients was £126.12.

List of Tables

Section 1 : Time series

- Table 1.1 DWA/DPTC recipients by family type, January 1993 - January 2001.
- Chart 1 DWA/DPTC recipients by family type, Great Britain, January 1993 - January 2001.
- Table 1.2 Average DWA/DPTC award by family type of recipients, January 1993 - January 2001.
- Chart 2 Average DWA/DPTC award by family type of recipients, Great Britain, January 1993 to January 2001

Section 2 : Family type

- Table 2.1 Age and gender of recipients, and whether with children.
- Chart 3 Recipients by age, and whether with children.
- Table 2.2 Gender and family type of recipients, and average weekly award.
- Chart 4 Family type and gender of recipients.
- Table 2.3 Main qualifying benefit of recipients, by whether with children, and average weekly award.

Section 3 : Amount of award

- Table 3.1 Family type and gender of recipients, by weekly amount of award.
- Table 3.2 Family size and type of recipients, by weekly amount of award.
- Chart 5 Recipients by number of children in family, and by family type.

Section 4 : Earnings and other income

- Table 4.1 Gross weekly earnings of recipients, by family type.
- Chart 6 Recipients by gross weekly earnings, and by whether with children.
- Table 4.2 Recipients whose family incomes include social security benefits which are brought to account, by family type.
- Table 4.3 Recipients whose families receive other income which is brought to account, by family type.

Section 5 : Geographical analysis

- Table 5.1 Recipients in each Government Office Region, by employment status and family type.
- Table 5.2 Average weekly award for recipients in each Government Office Region, by employment status and family type.
- Table 5.3 Recipients in each local authority
- Table 5.4 Recipients in each parliamentary constituency

Section 6 : Historical DPTC

- Table 6.1 Type and main qualifying benefit for recipients of all awards starting between October 1999 and January 2001.
- Table 6.2 : Recipients of awards starting between October 1999 and January 2001 by type of award and family type.
- Table 6.3 : Disallowances between October 1999 and January 2001 by reason of disallowance.
- Table 6.4 : Recipients of renewal and repeat awards starting between October 1999 and January 2001 by disability type and age.

Section 1 : Time series

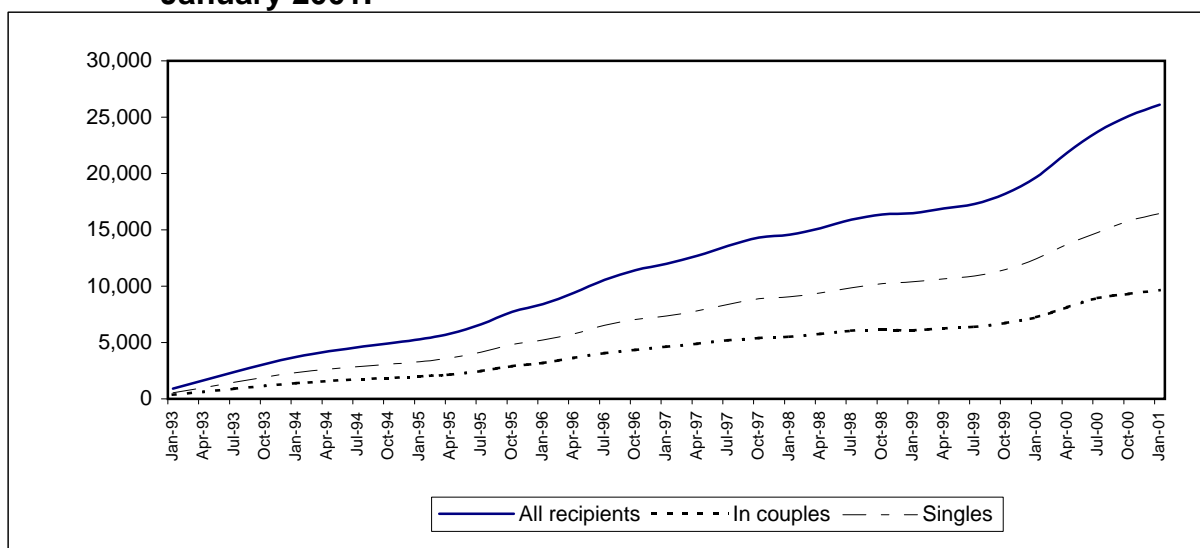
This section shows back quarterly series for the number of recipients of Disability Working Allowance and Disabled Persons' Tax Credit, and their average awards.

For November 1999 and February 2000 the recipients are a mixture of Disability Working Allowance and Disabled Persons' Tax Credit recipients. Disability Working Allowance recipients are those with awards starting up to 30 September 1999 and still current at the reference date.

The figures for October 2000 are slightly different to those published last time, as they include the recipients of awards made after the scan for the previous publication and then backdated.

Table 1.1 : DWA/DPTC recipients by family type, January 1993 - January 2001.

	All recipients		In couples		Singles	
	Great Britain	United Kingdom	Great Britain	United Kingdom	Great Britain	United Kingdom
Jan-93	904	-	361	-	543	-
Jan-94	3,722	-	1,392	-	2,330	-
Jan-95	5,277	-	1,990	-	3,287	-
Apr-95	5,782	-	2,152	-	3,630	-
Jul-95	6,615	-	2,465	-	4,150	-
Oct-95	7,719	-	2,899	-	4,820	-
Jan-96	8,406	-	3,186	-	5,220	-
Apr-96	9,416	-	3,638	-	5,778	-
Jul-96	10,577	-	4,049	-	6,528	-
Oct-96	11,409	-	4,359	-	7,050	-
Jan-97	11,979	-	4,620	-	7,359	-
Apr-97	12,689	-	4,881	-	7,808	-
Jul-97	13,575	-	5,191	-	8,384	-
Oct-97	14,306	-	5,405	-	8,901	-
Jan-98	14,564	-	5,500	-	9,064	-
Apr-98	15,145	-	5,753	-	9,392	-
Jul-98	15,910	-	6,040	-	9,870	-
Oct-98	16,353	-	6,125	-	10,228	-
Jan-99	16,483	-	6,093	-	10,390	-
Apr-99	16,904	-	6,263	-	10,641	-
Jul-99	17,305	-	6,400	-	10,905	-
Oct-99	18,222	19,445	6,738	7,207	11,484	12,238
Jan-00	19,678	21,017	7,232	7,740	12,446	13,277
Apr-00	21,853	23,373	8,132	8,725	13,721	14,648
Jul-00	23,732	25,355	8,955	9,574	14,777	15,781
Oct-00	25,112	26,847	9,330	9,992	15,782	16,855
Jan-01	26,114	27,932	9,668	10,346	16,446	17,586

Chart 1 : DWA/DPTC recipients by family type, Great Britain, January 1993 - January 2001.

**Table 1.2 : Average DWA/DPTC award by family type of recipients,
January 1993 to January 2001.**

	<i>£ per week</i>					
	All recipients		In couples		Singles	
	Great Britain	United Kingdom	Great Britain	United Kingdom	Great Britain	United Kingdom
Jan-93	35.37	-	43.59	-	29.91	-
Jan-94	40.71	-	53.03	-	33.36	-
Jan-95	44.79	-	58.93	-	36.23	-
Apr-95	45.46	-	59.43	-	37.17	-
Jul-95	49.65	-	64.32	-	40.94	-
Oct-95	53.87	-	69.90	-	44.22	-
Jan-96	54.35	-	70.25	-	44.65	-
Apr-96	54.72	-	70.84	-	44.57	-
Jul-96	55.97	-	73.10	-	45.35	-
Oct-96	56.92	-	74.22	-	46.23	-
Jan-97	56.69	-	74.06	-	45.78	-
Apr-97	57.39	-	74.89	-	46.44	-
Jul-97	58.46	-	76.47	-	47.30	-
Oct-97	58.37	-	77.22	-	46.92	-
Jan-98	57.52	-	75.83	-	46.41	-
Apr-98	57.84	-	76.08	-	46.67	-
Jul-98	58.63	-	77.10	-	47.33	-
Oct-98	58.97	-	77.98	-	47.58	-
Jan-99	59.05	-	78.89	-	47.41	-
Apr-99	59.53	-	79.38	-	47.84	-
Jul-99	60.13	-	80.31	-	48.29	-
Oct-99	61.66	62.09	81.64	82.16	49.94	50.27
Jan-00	65.69	66.21	85.05	85.87	54.43	54.76
Apr-00	69.56	70.14	88.29	89.17	58.46	58.81
Jul-00	71.37	71.85	90.57	91.37	59.73	60.01
Oct-00	73.02	73.53	93.43	94.28	60.95	61.23
Jan-01	72.70	73.23	92.46	93.32	61.08	61.42

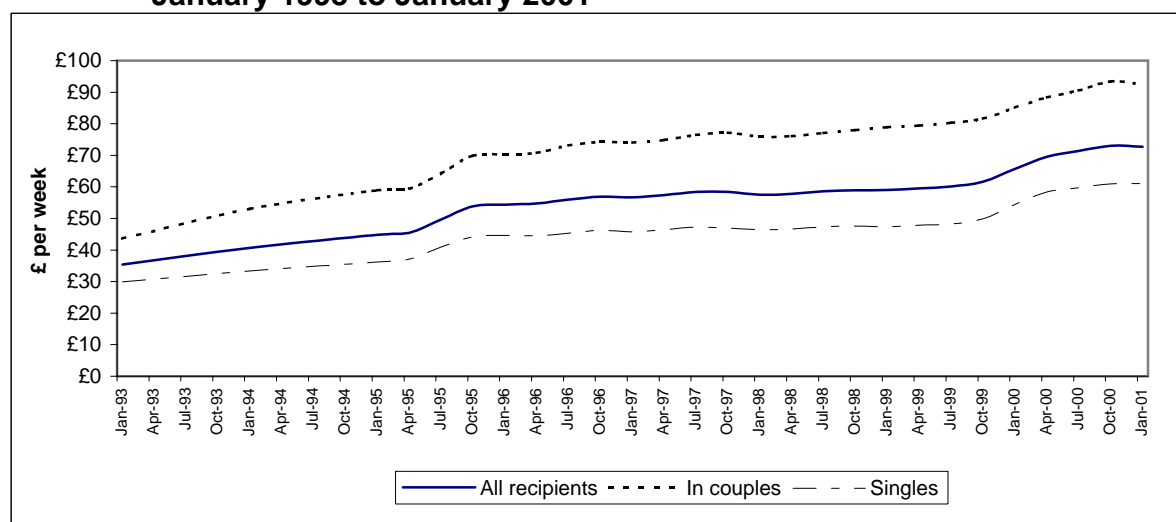
**Chart 2 : Average DWA/DPTC award by family type of recipients, Great Britain,
January 1993 to January 2001**

Table 2.1 : Age and gender of recipients, and whether with children.

	<i>United Kingdom</i>				
	All recipients	Male	%	Female	%
All cases	27,932	15,907	57	12,025	43
Under 20	524	310	59	214	41
20 - 29	5,827	3,173	54	2,654	46
30 - 39	9,260	5,076	55	4,184	45
40 - 49	7,736	4,427	57	3,309	43
50 - 59	4,061	2,471	61	1,590	39
60 and over	524	450	86	74	14
With children	12,715	6,849	54	5,866	46
Under 20	22	5	23	17	77
20 - 29	1,299	550	42	749	58
30 - 39	5,785	2,923	51	2,862	49
40 - 49	4,487	2,568	57	1,919	43
50 - 59	1,051	744	71	307	29
60 and over	71	59	83	12	17
Without children	15,217	9,058	60	6,159	40
Under 20	502	305	61	197	39
20 - 29	4,528	2,623	58	1,905	42
30 - 39	3,475	2,153	62	1,322	38
40 - 49	3,249	1,859	57	1,390	43
50 - 59	3,010	1,727	57	1,283	43
60 and over	453	391	86	62	14

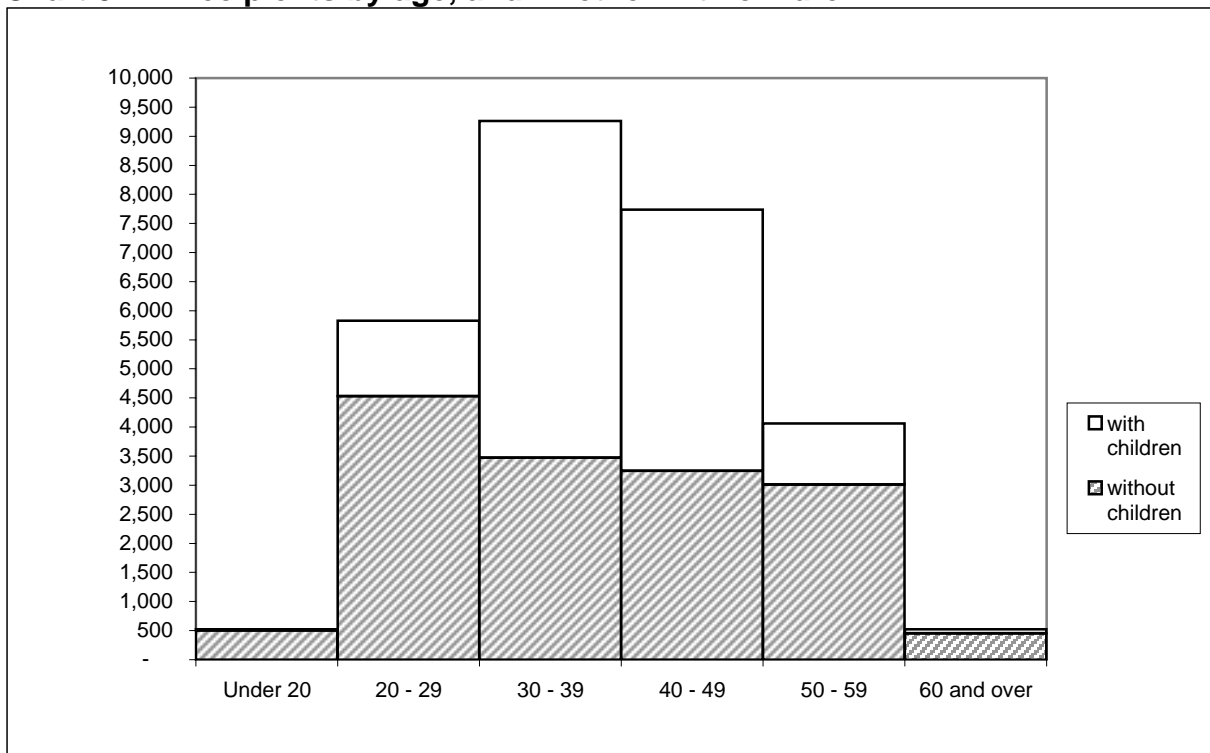
Chart 3 : Recipients by age, and whether with children.

Table 2.2 : Gender and family type of recipients, and average weekly award.

<i>United Kingdom</i>		
	All recipients	Average award £ per week
All cases	27,932	73.23
Male - in couples	8,500	96.27
Female - in couples	1,846	79.71
Male -single	7,407	42.87
Female -single	10,179	74.91
With children	12,715	109.49
Male - in couples	6,414	107.73
Female - in couples	1,254	91.84
Male -single	435	103.93
Female -single	4,612	117.27
Without children	15,217	42.94
Male - in couples	2,086	61.05
Female - in couples	592	54.01
Male -single	6,972	39.06
Female -single	5,567	39.83

Chart 4 : Family type and gender of recipients.

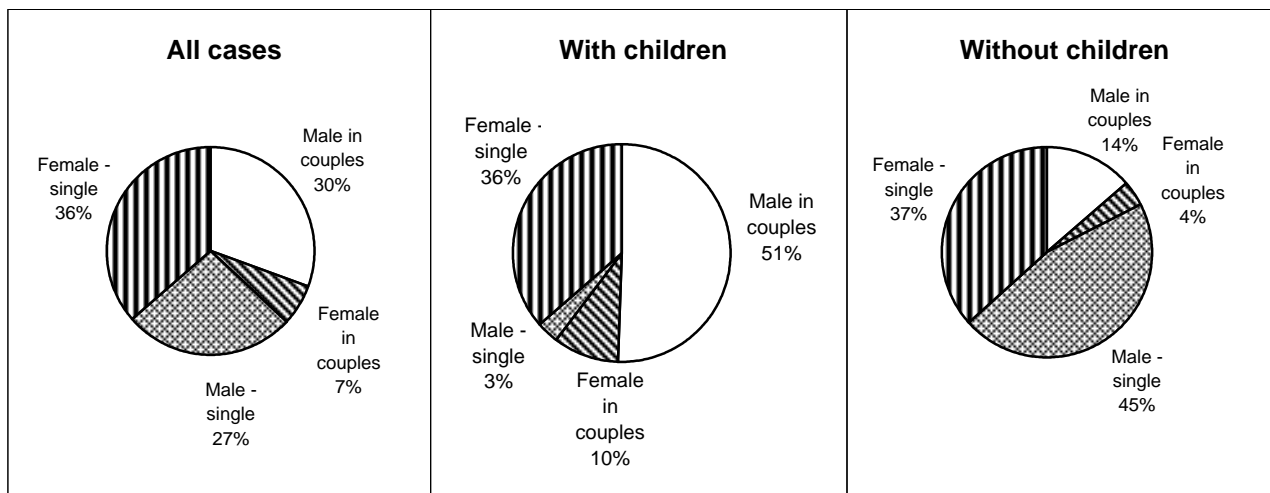


Table 2.3 : Main qualifying benefit of recipients, by whether with children, and average weekly award.

	<i>United Kingdom</i>	
	Recipients	Average award £ per week
All cases	27,932	73.23
Higher rate Disability living allowance and analogous benefits	11,771	69.77
Lower rate Disability living allowance	5,851	64.26
Severe disablement allowance	2,026	59.31
Disability premium in Income support /Jobseeker's allowance	3,808	92.91
Disability premium in Housing benefit	38	74.47
Disability premium in Council tax benefit	13	81.76
Incapacity benefit (higher rate short term)	949	85.69
Incapacity benefit (long term)	3,459	83.32
Fast track applicants ¹	17	52.1
With children	12,715	109.49
Higher rate Disability living allowance and analogous benefits	5,465	102.06
Lower rate Disability living allowance	2,207	104.83
Severe disablement allowance	448	116.19
Disability premium in Income support /Jobseeker's allowance	2,180	125.92
Incapacity benefit (higher rate short term)	561	112.05
Incapacity benefit (long term)	1,829	115.29
Other cases ¹	25	111.46
Without children	15,217	42.94
Higher rate Disability living allowance and analogous benefits	6,306	41.79
Lower rate Disability living allowance	3,644	39.7
Severe disablement allowance	1,578	43.16
Disability premium in Income support /Jobseeker's allowance	1,628	48.72
Incapacity benefit (higher rate short term)	388	47.58
Incapacity benefit (long term)	1,630	47.44
Other cases ¹	43	46.32

¹ Entrants through the fast track are not required to be receiving, or to have received, one of these listed benefits to qualify for an award. They are however included here for completeness.

Table 3.1 : Family type and gender of recipients, by weekly amount of award.*United Kingdom*

	All cases	Weekly amount of award						
		Under £20.00	£20.00 - £39.99	£40.00 - £59.99	£60.00 - £79.99	£80.00 - £99.99	£100.00 - £119.99	£120.00 and over
With and without children								
All recipients	27,932	2,069	5,471	7,331	2,449	2,632	2,997	4,983
Male	15,907	1,246	3,283	4,053	1,608	1,681	1,325	2,711
Female	12,025	823	2,188	3,278	841	951	1,672	2,272
In couples	10,346	500	945	1,189	1,467	1,930	1,382	2,933
Male	8,500	356	688	898	1,171	1,630	1,188	2,569
Female	1,846	144	257	291	296	300	194	364
Singles	17,586	1,569	4,526	6,142	982	702	1,615	2,050
Male	7,407	890	2,595	3,155	437	51	137	142
Female	10,179	679	1,931	2,987	545	651	1,478	1,908
With children								
All recipients	12,715	254	567	872	1,314	1,728	2,997	4,983
Male	6,849	170	365	571	783	924	1,325	2,711
Female	5,866	84	202	301	531	804	1,672	2,272
In couples	7,668	233	481	697	1,942		1,382	2,933
Male	6,414	164	349	539	1,605		1,188	2,569
Female	1,254	69	132	158	337		194	364
Singles	5,047	21	86	175	1,100		1,615	2,050
Male	435	6	16	32	102		137	142
Female	4,612	15	70	143	998		1,478	1,908
Without children								
All recipients	15,217	1,815	4,904	6,459	1,135	904	-	-
Male	9,058	1,076	2,918	3,482	825	757	-	-
Female	6,159	739	1,986	2,977	310	147	-	-
In couples	2,678	267	464	492	1,455		-	-
Male	2,086	192	339	359	1,196		-	-
Female	592	75	125	133	259		-	-
Singles	12,539	1,548	4,440	5,967	584		-	-
Male	6,972	884	2,579	3,123	386		-	-
Female	5,567	664	1,861	2,844	198		-	-

Table 3.2 : Family size and type of recipients, by weekly amount of award.*United Kingdom*

	All cases	Weekly amount of award							Average award £ per week
		Under £20.00	£20.00 - £39.99	£40.00 - £59.99	£60.00 - £79.99	£80.00 - £99.99	£100.00 - £119.99	£120.00 and over	
All recipients	27,932	2,069	5,471	7,331	2,449	2,632	2,997	4,983	73.23
No children	15,217	1,815	4,904	6,459	1,135	904	-	-	42.94
One child	5,142	134	314	465	739	980	1,970	540	89.90
Two children	4,643	100	217	314	427	583	724	2,278	108.44
Three children	1,998	20	36	78	128	142	249	1,351	133.33
Four or more children	932			15	20	23	54	814	171.68
In couples	10,346	500	945	1,189	1,467	1,930	1,382	2,933	93.32
No children	2,678	731		492	1,455		-	-	59.49
One child	2,337	360		325	839		611	202	78.88
Two or more children	5,331	354		372	1,103		771	2,731	116.64
Singles	17,586	1,569	4,526	6,142	982	702	1,615	2,050	61.42
No children	12,539	5,988		5,967	584		-	-	39.40
One child	2,805	88		140	880		1,359	338	99.08
Two or more children	2,242	19		35	220		256	1,712	137.42

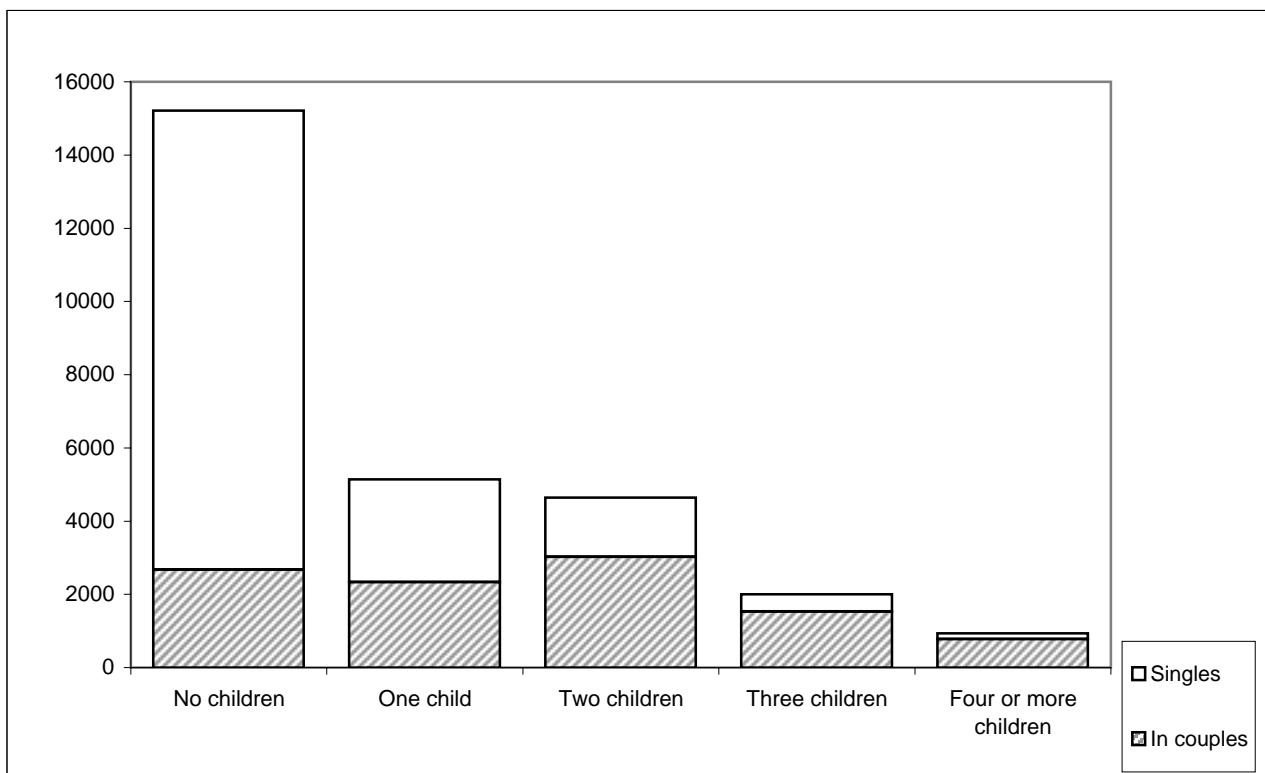
Chart 5 : Recipients by number of children in family, and by family type.

Table 4.1 : Gross weekly earnings of recipients, by family type.*United Kingdom*

	All cases	Gross weekly earnings of recipients						Average gross earnings £ per week
		Under £40.00	£40.00 - £79.99	£80.00 - £119.99	£120.00 - £159.99	£160.00 - £199.99	£200.00 and over	
All recipients	27,932	1,841	6,783	6,447	4,651	4,085	4,125	126.12
In couples	10,346	1,045	2,336	1,779	1,267	1,439	2,480	137.08
Singles	17,586	796	4,447	4,668	3,384	2,646	1,645	119.68
With children	12,715	865	2,819	2,502	1,710	1,664	3,155	142.50
In couples	7,668	651	1,581	1,239	918	1,080	2,199	148.00
Singles	5,047	214	1,238	1,263	792	584	956	134.15
Without children	15,217	976	3,964	3,945	2,941	2,421	970	112.44
In couples	2,678	394	755	540	349	359	281	105.81
Singles	12,539	582	3,209	3,405	2,592	2,062	689	113.85

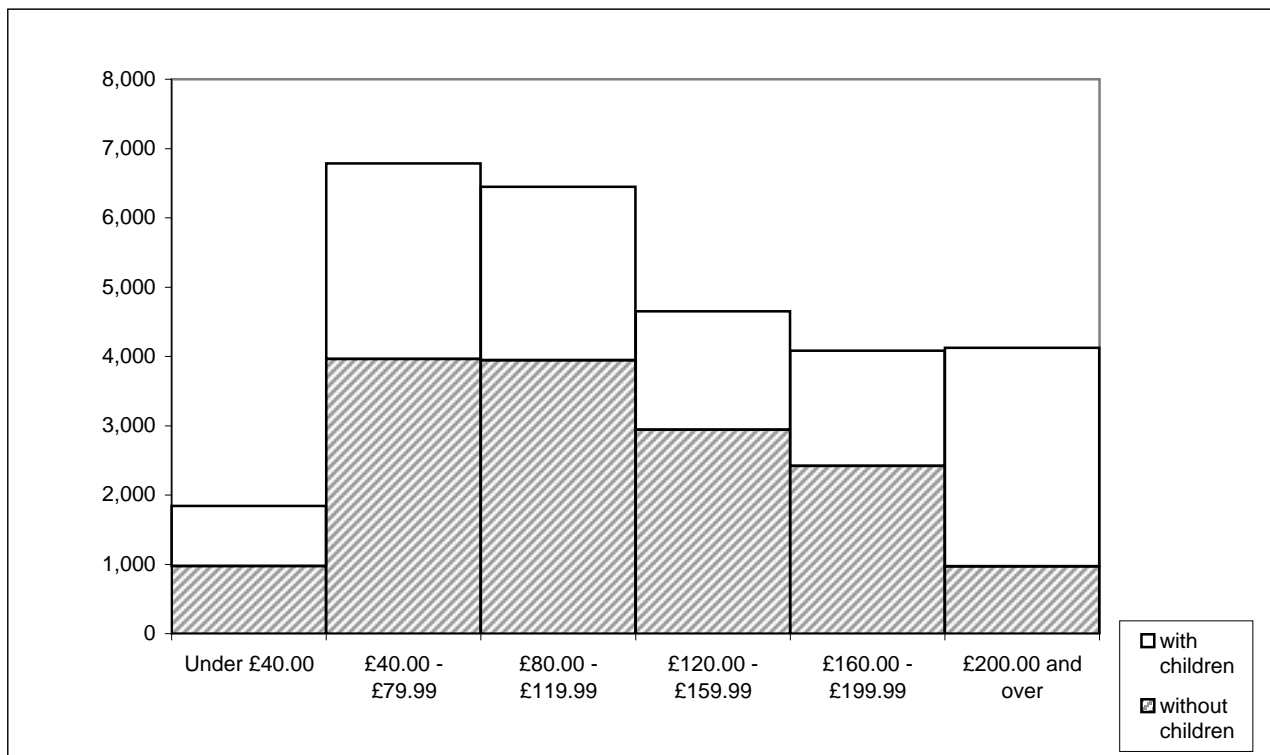
Chart 6 : Recipients by gross weekly earnings, and by whether with children.

Table 4.2 : Recipients whose family incomes include social security benefits which are brought to account, by family type.

United Kingdom

	All recipients	In couples		Singles
		To DPTC recipient	To partner only	
Pensions:				
Retirement pension	234	42	154	38
Widow's benefit	121	-	-	117
War pension	40		33	7
Unemployment related benefits:				
Jobseeker's allowance	46	-	46	-
Sickness and disability benefits:				
Incapacity benefit	728	-	728	-
Severe disablement allowance	290	-	290	-
Industrial injuries disablement benefit	599	380	49	170
War disablement pension	151	113	13	25
Carer benefits:				
Invalid care allowance	1,021	36	929	56
Others:				
	29	8	5	16

Note: Certain benefits are excluded as they are not brought to account when calculating the level of award. Examples are Child benefit, Housing benefit, Council tax benefit and Disability working allowance.

Table 4.3 : Recipients whose families receive other income which is brought to account, by family type.

United Kingdom

	All recipients	In couples	Singles
All cases	1,170	685	485
Benefits in kind	49	23	26
Rent and others	1,118	664	454
With children	576	401	175
Benefits in kind	22	13	9
Rent and others	552	387	165
Without children	594	284	310
Benefits in kind	27	10	17
Rent and others	566	277	289

Section 5 : Geographical analysis

This section shows the number of recipients in each country of the United Kingdom, and in each Government Office Region, and the average weekly value of the awards. It also shows the number of recipients in each local authority and in each Westminster parliamentary constituency.

All the geographical classifications have been derived from the postcode recorded for the recipient, and used as part of the correspondence address. Each postcode was matched against the 2000 Version B Postcode Directory supplied by the Office for National Statistics. This allocated postcodes in use at mid-2000 to local authorities and constituencies according to their definitions as at the end of December 1999.

Not all recipients have complete and accurate postcodes recorded. Each recipient is allocated to a constituency, local authority and region if the postcode, or the element present, is sufficient to do so with certainty, according to the postcode directory.

A few recipients are allocated to a local authority if the element present is sufficient to do so with a high probability, even though not with certainty. These, and recipients with certain Northern Ireland postcodes for which the postcode directory shows only that the address is in Northern Ireland, are shown as "Constituency not known" within each country in Table 5.4

This leaves a few recipients with no postcode, or where the recorded postcode does not identify the local authority with a high probability. These are shown as "Not allocated" in all the tables in this section. For presentational convenience, they are included within subtotals for "Great Britain" here and in Section 1.

Comparisons over time can be affected by boundary changes incorporated into successive versions of the postcode directory.

Table 5.1 Recipients in each Government Office Region, by employment status and family type.

	All recipients			Employees			Self employed ¹		
	All	In couples	Singles	All	In couples	Singles	All	In couples	Singles
United Kingdom	27,932	10,346	17,586	23,874	7,798	16,076	4,058	2,548	1,510
Great Britain	26,114	9,668	16,446	22,324	7,316	15,008	3,790	2,352	1,438
North East	1,663	673	990	1,398	505	893	265	168	97
North West	4,310	1,568	2,742	3,642	1,146	2,496	668	422	246
Yorkshire and the Humber	2,676	1,101	1,575	2,280	850	1,430	396	251	145
East Midlands	1,946	850	1,096	1,657	656	1,001	289	194	95
West Midlands	2,597	1,020	1,577	2,249	785	1,464	348	235	113
Eastern	1,627	589	1,038	1,381	432	949	246	157	89
London	1,471	416	1,055	1,297	323	974	174	93	81
South East	2,352	786	1,566	2,013	587	1,426	339	199	140
South West	2,514	966	1,548	2,087	699	1,388	427	267	160
Wales	2,279	921	1,358	1,903	708	1,195	376	213	163
Scotland	2,661	776	1,885	2,401	623	1,778	260	153	107
Northern Ireland	1,818	678	1,140	1,550	482	1,068	268	196	72
Not allocated	18	2	16	16	2	14	2	-	2

Table 5.2 Average weekly award for recipients in each Government Office Region, by employment status and family type.

	All recipients			Employees			Self employed ¹		
	All	In couples	Singles	All	In couples	Singles	All	In couples	Singles
United Kingdom	73.23	93.32	61.42	68.52	86.36	59.86	100.96	114.59	77.97
Great Britain	72.70	92.46	61.08	68.09	85.82	59.45	99.83	113.11	78.11
North East	73.13	90.61	61.25	68.69	85.25	59.32	96.57	106.71	79.01
North West	76.67	95.52	65.89	72.15	88.63	64.59	101.31	114.21	79.16
Yorkshire and The Humber	74.34	92.51	61.64	69.65	85.90	60.00	101.33	114.88	77.87
East Midlands	74.83	94.44	59.63	70.05	88.17	58.18	102.22	115.62	74.84
West Midlands	72.51	90.81	60.68	68.14	84.38	59.43	100.76	112.27	76.83
Eastern	70.70	94.01	57.48	64.47	84.75	55.24	105.67	119.48	81.31
London	67.39	91.82	57.75	63.67	86.28	56.17	95.11	111.06	76.80
South East	67.66	92.88	55.00	62.53	85.00	53.28	98.10	116.13	72.46
South West	69.38	91.82	55.37	63.30	83.93	52.91	99.08	112.50	76.70
Wales	76.94	93.59	65.64	73.31	89.03	64.00	95.28	108.74	77.68
Scotland	71.21	86.13	65.06	67.97	80.23	63.67	101.12	110.17	88.17
Northern Ireland	80.91	105.52	66.28	74.67	94.60	65.68	117.02	132.40	75.15

1. Recipient has self employment income source and no source of income as an employee

Table 5.3 : Recipients in each local authority.

Local authority	All cases	Local authority	All cases
UNITED KINGDOM	27,932	Cumbria	256
GREAT BRITAIN	26,114	Allerdale	38
ENGLAND	21,156	Barrow-in-Furness	59
NORTH EAST	1,663	Carlisle	49
Darlington UA	53	Copeland	28
Hartlepool UA	81	Eden	29
Middlesbrough UA	81	South Lakeland	53
Redcar and Cleveland UA	75	Greater Manchester (Met County)	1,717
Stockton-on-Tees UA	106	Bolton	235
Durham	356	Bury	134
Chester-le-Street	30	Manchester	255
Derwentshire	64	Oldham	155
Durham	41	Rochdale	152
Easington	98	Salford	129
Sedgefield	74	Stockport	189
Teesdale	10	Tameside	176
Wear Valley	39	Trafford	93
Northumberland	176	Wigan	199
Alnwick	8	Lancashire	661
Berwick-upon-Tweed	15	Burnley	53
Blyth Valley	65	Chorley	56
Castle Morpeth	12	Fylde	36
Tynedale	35	Hyndburn	62
Wansbeck	41	Lancaster	61
Tyne and Wear (Met County)	735	Pendle	65
Gateshead	153	Preston	74
Newcastle-upon-Tyne	144	Ribble Valley	22
North Tyneside	125	Rossendale	56
South Tyneside	108	South Ribble	56
Sunderland	205	West Lancashire	61
NORTH WEST	4,310	Wyre	59
Blackburn with Darwen UA	112	Merseyside (Met County)	978
Blackpool UA	116	Knowsley	137
Halton UA	91	Liverpool	342
Warrington UA	84	St Helens	103
Cheshire	295	Sefton	176
Chester	66	Wirral	220
Congleton	39	YORKSHIRE AND THE HUMBER	2,676
Crewe and Nantwich	45	East Riding of Yorkshire UA	101
Ellesmere Port and Neston	44	Kingston-upon-Hull, City of UA	136
Macclesfield	52	North East Lincolnshire UA	98
Vale Royal	49	North Lincolnshire UA	71
		York UA	136

Table 5.3 : Recipients in each local authority (continued).

Local authority	All cases	Local authority	All cases
North Yorkshire	260	Lincolnshire	368
Craven	18	Boston	60
Hambleton	42	East Lindsey	116
Harrogate	71	Lincoln	49
Richmondshire	16	North Kesteven	39
Ryedale	7	South Holland	45
Scarborough	82	South Kesteven	41
Selby	24	West Lindsey	18
South Yorkshire (Met County)	771	Northamptonshire	232
Barnsley	153	Corby	29
Doncaster	194	Daventry	23
Rotherham	179	East Northamptonshire	21
Sheffield	245	Kettering	47
		Northampton	68
West Yorkshire (Met County)	1,103	South Northamptonshire	14
Bradford	269	Wellingborough	30
Calderdale	89		
Kirklees	209	Nottinghamshire	379
Leeds	341	Ashfield	61
Wakefield	195	Bassetlaw	53
		Broxtowe	47
EAST MIDLANDS	1,946	Gedling	60
		Mansfield	78
Derby UA	137	Newark and Sherwood	55
Leicester UA	139	Rushcliffe	25
Nottingham UA	141		
Rutland UA	6	WEST MIDLANDS	2,597
Derbyshire	361	Herefordshire, County of UA	100
Amber Valley	57	Stoke-on-Trent UA	168
Bolsover	49	Telford and Wrekin UA	102
Chesterfield	66		
Derbyshire Dales	24	Shropshire	150
Erewash	41	Bridgnorth	17
High Peak	50	North Shropshire	25
North East Derbyshire	39	Oswestry	28
South Derbyshire	35	Shrewsbury and Atcham	55
		South Shropshire	25
Leicestershire	183	Staffordshire	369
Blaby	38	Cannock Chase	52
Charnwood	43	East Staffordshire	52
Harborough	15	Lichfield	40
Hinckley and Bosworth	28	Newcastle-under-Lyme	59
Melton	11	South Staffordshire	43
North West Leicestershire	26	Stafford	42
Oadby and Wigston	22	Staffordshire Moorlands	42
		Tamworth	39

Table 5.3 : Recipients in each local authority (continued).

Local authority	All cases	Local authority	All cases
Warwickshire	178	Essex	376
North Warwickshire	24	Basildon	51
Nuneaton and Bedworth	55	Braintree	47
Rugby	23	Brentwood	11
Stratford-upon-Avon	36	Castle Point	21
Warwick	40	Chelmsford	41
		Colchester	69
West Midlands (Met County)	1,335	Epping Forest	12
Birmingham	525	Harlow	17
Coventry	140	Maldon	13
Dudley	150	Rochford	19
Sandwell	187	Tendring	63
Solihull	81	Uttlesford	12
Walsall	112		
Wolverhampton	140	Hertfordshire	214
		Broxbourne	12
Worcestershire	195	Dacorum	43
Bromsgrove	30	East Hertfordshire	15
Malvern Hills	30	Hertsmere	19
Redditch	43	North Hertfordshire	27
Worcester	29	St. Albans	28
Wychavon	29	Stevenage	20
Wyre Forest	34	Three Rivers	14
		Watford	13
		Welwyn-Hatfield	23
EAST OF ENGLAND	1,627		
		Norfolk	318
Luton UA	61	Breckland	54
Peterborough UA	76	Broadland	30
Southend-on-Sea UA	32	Great Yarmouth	50
Thurrock UA	44	King's Lynn and West Norfolk	62
		North Norfolk	35
Bedfordshire	111	Norwich	51
Bedford	42	South Norfolk	36
Mid Bedfordshire	33		
South Bedfordshire	36	Suffolk	233
		Babergh	24
Cambridgeshire	162	Forest Heath	10
Cambridge	32	Ipswich	59
East Cambridgeshire	14	Mid Suffolk	26
Fenland	37	St. Edmundsbury	28
Huntingdonshire	35	Suffolk Coastal	30
South Cambridgeshire	44	Waveney	56

Table 5.3 : Recipients in each local authority (continued).I

Local authority	All cases	Local authority	All cases
LONDON	1,471	SOUTH EAST	2,352
Inner London	548	Bracknell Forest UA	18
Inner London - West	168	Brighton and Hove UA	131
Camden	37	Isle of Wight UA	71
Hammersmith and Fulham	28	Medway UA	85
Kensington and Chelsea	28	Milton Keynes UA	93
Wandsworth	43	Portsmouth UA	61
Westminster and City of London	32	Reading UA	34
Inner London - East	380	Slough UA	19
Hackney	50	Southampton UA	89
Haringey	27	West Berkshire UA	26
Islington	37	Windsor and Maidenhead UA	19
Lambeth	53	Wokingham UA	19
Lewisham	64	Buckinghamshire	112
Newham	66	Aylesbury Vale	37
Southwark	54	Chiltern	18
Tower Hamlets	29	South Bucks	9
		Wycombe	48
Outer London	923	East Sussex	161
Outer London - East and North East	352	Eastbourne	35
Barking and Dagenham	49	Hastings	48
Bexley	54	Lewes	29
Enfield	37	Rother	23
Greenwich	51	Wealden	26
Havering	53	Hampshire	373
Redbridge	48	Basingstoke and Deane	40
Waltham Forest	60	East Hampshire	27
Outer London - South	225	Eastleigh	36
Bromley	45	Fareham	29
Croydon	87	Gosport	33
Kingston-upon-Thames	17	Hart	25
Merton	29	Havant	53
Sutton	47	New Forest	50
Outer London - West and North West	346	Rushmoor	17
Barnet	58	Test Valley	39
Brent	57	Winchester	24
Ealing	55	Kent	425
Harrow	44	Ashford	34
Hillingdon	47	Canterbury	31
Hounslow	65	Dartford	23
Richmond-upon-Thames	20	Dover	36
		Gravesham	28
		Maidstone	34
		Sevenoaks	28
		Shepway	38
		Swale	47
		Thanet	75
		Tonbridge and Malling	26
		Tunbridge Wells	25

Table 5.3 : Recipients in each local authority (continued).

Local authority	All cases	Local authority	All cases
Oxfordshire	185	Devon	365
Cherwell	50	East Devon	50
Oxford	37	Exeter	51
South Oxfordshire	34	Mid Devon	27
Vale of White Horse	37	North Devon	51
West Oxfordshire	27	South Hams	44
		Teignbridge	74
Surrey	198	Torridge	51
Elmbridge	22	West Devon	17
Epsom and Ewell	14		
Guildford	17	Dorset	185
Mole Valley	27	Christchurch	17
Reigate and Banstead	28	East Dorset	35
Runnymede	17	North Dorset	32
Spelthorne	12	Purbeck	20
Surrey Heath	17	West Dorset	43
Tandridge	14	Weymouth and Portland	38
Waverley	16		
Woking	14	Gloucestershire	204
		Cheltenham	48
West Sussex	233	Cotswold	15
Adur	23	Forest of Dean	29
Arun	53	Gloucester	52
Chichester	36	Stroud	40
Crawley	32	Tewkesbury	20
Horsham	22		
Mid Sussex	43	Somerset	228
Worthing	24	Mendip	39
		Sedgemoor	53
SOUTH WEST	2,514	South Somerset	68
		Taunton Deane	48
Bath and North East Somerset UA	73	West Somerset	20
Bournemouth UA	135		
Bristol, City of UA	161	Wiltshire	122
North Somerset UA	66	Kennet	20
Plymouth UA	253	North Wiltshire	32
Poole UA	53	Salisbury	39
South Gloucestershire UA	84	South Wiltshire	31
Swindon UA	80		
Torbay UA	142		
Cornwall, and the Isles of Scilly	363		
Caradon	59		
Carrick	49		
Kerrier	72		
North Cornwall	57		
Penwith and Isles of Scilly	61		
Restormel	65		

Table 5.3 : Recipients in each local authority (continued).

Local authority	All cases	Local authority	All cases
WALES	2,279	Moray	34
Blaenau Gwent	98	North Ayrshire	67
Bridgend	98	North Lanarkshire	261
Caerphilly	200	Orkney Islands	13
Cardiff	141	Perth and Kinross	70
Carmarthenshire	126	Renfrewshire	130
Ceredigion	60	Scottish Borders, The	62
Conwy	68	Shetland Islands	6
Denbighshire	65	South Ayrshire	53
Flintshire	92	South Lanarkshire	180
Gwynedd	80	Stirling	38
Isle of Anglesey	69	West Dunbartonshire	45
Merthyr Tydfil	93	West Lothian	122
Monmouthshire	42		
Neath Port Talbot	140	NORTHERN IRELAND	1,818
Newport	75	Antrim	48
Pembrokeshire	137	Ards	43
Powys	88	Armagh	51
Rhondda, Cynon, Taff	204	Ballymena	40
Swansea	155	Ballymoney	28
Torfaen	77	Banbridge	40
Vale of Glamorgan, The	65	Belfast	340
Wrexham	106	Carrickfergus	32
		Castlereagh	69
SCOTLAND	2,661	Coleraine	34
Aberdeen City	72	Cookstown	48
Aberdeenshire	65	Craigavon	111
Angus	46	Derry	114
Argyll and Bute	30	Down	74
Clackmannanshire	20	Dungannon	67
Dumfries and Galloway	72	Fermanagh	49
Dundee City	89	Larne	22
East Ayrshire	60	Limavady	38
East Dunbartonshire	46	Lisburn	128
East Lothian	48	Magherafelt	47
East Renfrewshire	36	Moyle	14
Edinburgh, City of	199	Newry and Mourne	91
Eilean Siar (Western Isles)	13	Newtonabbey	78
Falkirk	73	North Down	63
Fife	183	Omagh	54
Glasgow City	320	Strabane	72
Highland	110	Northern Ireland - local authority not known	23
Inverclyde	50		
Midlothian	48	Not allocated	18

Table 5.4 : Recipients in each parliamentary constituency.

Parliamentary constituency	All cases	Parliamentary constituency	All cases
UNITED KINGDOM	27,932	Bolton South East	86
		Bolton West	55
GREAT BRITAIN	26,114	Bootle	76
		Boston and Skegness	97
ENGLAND	21,156	Bosworth	27
		Bournemouth East	73
Aldershot	38	Bournemouth West	62
Aldridge - Brownhills	32	Bracknell	18
Altrincham and Sale West	30	Bradford North	60
Amber Valley	46	Bradford South	67
Arundel and South Downs	17	Bradford West	52
Ashfield	53	Braintree	33
Ashford	34	Brent East	24
Ashton under Lyne	84	Brent North	12
Aylesbury	24	Brent South	21
Banbury	40	Brentford and Isleworth	33
Barking	25	Brentwood and Ongar	13
Barnsley Central	46	Bridgwater	57
Barnsley East and Mexborough	71	Brigg and Goole	41
Barnsley West and Penistone	57	Brighton, Kemptown	58
Barrow and Furness	69	Brighton, Pavilion	39
Basildon	42	Bristol East	39
Basingstoke	31	Bristol North West	58
Bassetlaw	58	Bristol South	48
Bath	42	Bristol West	26
Batley and Spen	47	Bromley and Chislehurst	11
Battersea	19	Bromsgrove	29
Beaconsfield	19	Broxbourne	12
Beckenham	17	Broxtowe	42
Bedford	29	Buckingham	17
Berwick-upon-Tweed	25	Burnley	53
Bethnal Green and Bow	18	Burton	50
Beverley and Holderness	36	Bury North	61
Bexhill and Battle	24	Bury South	73
Bexleyheath and Crayford	25	Bury St. Edmunds	33
Billericay	21	Calder Valley	40
Birkenhead	75	Camberwell and Peckham	25
Birmingham, Edgbaston	32	Cambridge	28
Birmingham, Erdington	72	Cannock Chase	54
Birmingham, Hall Green	44	Canterbury	24
Birmingham, Hodge Hill	62	Carlisle	41
Birmingham, Ladywood	49	Carshalton and Wallington	29
Birmingham, Northfield	40	Castle Point	21
Birmingham, Perry Barr	40	Central Suffolk and North Ipswich	28
Birmingham, Selly Oak	43	Charnwood	27
Birmingham, Sparkbrook and Small Heath	68	Chatham and Aylesford	30
Birmingham, Yardley	39	Cheadle	57
Bishop Auckland	51	Cheltenham	34
Blaby	29	Chesham and Amersham	19
Blackburn	86	Chesterfield	59
Blackpool North and Fleetwood	65	Chester, City of	47
Blackpool South	84	Chichester	34
Blaydon	52	Chingford and Woodford Green	21
Blyth Valley	65	Chipping Barnet	19
Bognor Regis and Littlehampton	42	Chorley	56
Bolsover	51	Christchurch	41
Bolton North East	94	Cities of London and Westminster	11

Table 5.4 : Recipients in each parliamentary constituency (continued).

Parliamentary constituency	All cases	Parliamentary constituency	All cases
Cleethorpes	51	Esher and Walton	22
Colchester	46	Exeter	51
Colne Valley	53	Falmouth and Camborne	80
Congleton	39	Fareham	28
Copeland	28	Faversham and Mid Kent	20
Corby	38	Feltham and Heston	32
Cotswold	16	Finchley and Golders Green	20
Coventry North East	54	Folkestone and Hythe	38
Coventry North West	58	Forest of Dean	31
Coventry South	28	Fylde	49
Crawley	32	Gainsborough	18
Crewe and Nantwich	43	Gateshead East and Washington West	65
Crosby	28	Gedling	49
Croydon Central	30	Gillingham	31
Croydon North	35	Gloucester	52
Croydon South	22	Gosport	34
Dagenham	24	Grantham and Stamford	38
Darlington	47	Gravesham	28
Dartford	25	Great Grimsby	52
Daventry	28	Great Yarmouth	50
Denton and Reddish	71	Greenwich and Woolwich	17
Derby North	58	Guildford	15
Derby South	62	Hackney North and Stoke Newington	18
Devizes	35	Hackney South and Shoreditch	32
Dewsbury	47	Halesowen and Rowley Regis	45
Don Valley	43	Halifax	49
Doncaster Central	64	Haltemprice and Howden	17
Doncaster North	66	Halton	63
Dover	32	Hammersmith and Fulham	15
Dudley North	46	Hampstead and Highgate	12
Dudley South	51	Harborough	29
Dulwich and West Norwood	20	Harlow	17
Durham,. City of	41	Harrogate and Knaresborough	47
Ealing North	21	Harrow East	24
Ealing Southall	24	Harrow West	20
Ealing, Acton and Shepherd's Bush	23	Hartlepool	81
Easington	90	Harwich	51
East Devon	30	Hastings and Rye	48
East Ham	35	Havant	46
East Hampshire	28	Hayes and Harlington	21
East Surrey	19	Hazel Grove	51
East Worthing and Shoreham	33	Hemel Hempstead	32
East Yorkshire	32	Hemsworth	59
Eastbourne	37	Hendon	19
Eastleigh	34	Henley	17
Eccles	40	Hereford	62
Eddisbury	47	Hertford and Stortford	12
Edmonton	17	Hertsmere	17
Ellesmere Port and Neston	46	Hexham	37
Elmet	31	Heywood and Middleton	62
Eltham	20	High Peak	53
Enfield North	14	Hitchin and Harpenden	15
Enfield, Southgate	6	Holborn and St Pancras	25
Epping Forest	10	Hornchurch	15
Epsom and Ewell	22	Hornsey and Wood Green	15
Erewash	39	Horsham	19
Erith and Thamesmead	27	Houghton and Washington East	45

Table 5.4 : Recipients in each parliamentary constituency (continued).

Parliamentary constituency	All cases	Parliamentary constituency	All cases
Hove	43	Manchester, Withington	40
Huddersfield	49	Mansfield	67
Huntingdon	27	Medway	32
Hyndburn	67	Meriden	48
Ilford North	21	Mid Bedfordshire	21
Ilford South	20	Mid Dorset and North Poole	33
Ipswich	49	Mid Norfolk	30
Isle of Wight	71	Mid Sussex	36
Islington North	21	Mid Worcestershire	25
Islington South and Finsbury	16	Middlesbrough	54
Jarrow	73	Middlesbrough South and East Cleveland	51
Keighley	51	Milton Keynes North East	35
Kensington and Chelsea	10	Milton Keynes South West	58
Kettering	51	Mitcham and Morden	20
Kingston and Surbiton	12	Mole Valley	25
Kingston upon Hull East	48	Morecambe and Lunesdale	39
Kingston upon Hull North	49	Morley and Rothwell	52
Kingston upon Hull West and Hessle	43	New Forest East	25
Kingswood	43	New Forest West	25
Knowsley North and Sefton East	86	Newark	28
Knowsley South	82	Newbury	19
Lancaster and Wyre	47	Newcastle upon Tyne Central	45
Leeds Central	50	Newcastle upon Tyne East and Wallsend	44
Leeds East	42	Newcastle upon Tyne North	56
Leeds North East	55	Newcastle-under-Lyme	50
Leeds North West	20	Normanton	49
Leeds West	44	North Cornwall	80
Leicester East	40	North Devon	54
Leicester South	55	North Dorset	42
Leicester West	44	North Durham	63
Leigh	74	North East Bedfordshire	30
Leominster	40	North East Cambridgeshire	41
Lewes	23	North East Derbyshire	43
Lewisham East	23	North East Hampshire	10
Lewisham West	20	North East Hertfordshire	20
Lewisham, Deptford	21	North Essex	35
Leyton and Wanstead	25	North Norfolk	34
Lichfield	35	North Shropshire	53
Lincoln	51	North Southwark and Bermondsey	21
Liverpool, Garston	67	North Swindon	39
Liverpool, Riverside	60	North Thanet	54
Liverpool, Walton	82	North Tyneside	57
Liverpool, Wavertree	65	North Warwickshire	40
Liverpool, West Derby	67	North West Cambridgeshire	29
Loughborough	28	North West Durham	49
Louth and Horncastle	79	North West Hampshire	33
Ludlow	33	North West Leicestershire	26
Luton North	40	North West Norfolk	54
Luton South	23	North Wiltshire	26
Macclesfield	31	Northampton North	35
Maidenhead	19	Northampton South	35
Maidstone and The Weald	24	Northavon	26
Makerfield	68	Norwich North	37
Maldon and East Chelmsford	22	Norwich South	38
Manchester, Blackley	55	Nottingham East	48
Manchester, Central	55	Nottingham North	48
Manchester, Gorton	49	Nottingham South	45

Table 5.4 : Recipients in each parliamentary constituency (continued).

Parliamentary constituency	All cases	Parliamentary constituency	All cases
Nuneaton	41	Sherwood	57
Old Bexley and Sidcup	15	Shipley	39
Oldham East and Saddleworth	64	Shrewsbury and Atcham	55
Oldham West and Royton	76	Sittingbourne and Sheppey	38
Orpington	17	Skipton and Ripon	35
Oxford East	34	Sleaford and North Hykeham	37
Oxford West and Abingdon	32	Slough	18
Pendle	65	Solihull	32
Penrith and The Border	43	Somerton and Frome	42
Peterborough	52	South Cambridgeshire	34
Plymouth, Devonport	126	South Derbyshire	52
Plymouth, Sutton	90	South Dorset	47
Pontefract and Castleford	54	South East Cambridgeshire	27
Poole	34	South East Cornwall	72
Poplar and Canning Town	21	South Holland and The Deepings	48
Portsmouth North	40	South Norfolk	31
Portsmouth South	21	South Ribble	53
Preston	61	South Shields	46
Pudsey	48	South Staffordshire	36
Putney	15	South Suffolk	24
Rayleigh	17	South Swindon	41
Reading East	23	South Thanet	32
Reading West	20	South West Bedfordshire	29
Redcar	51	South West Devon	48
Redditch	44	South West Hertfordshire	20
Regent's Park and Kensington North	38	South West Norfolk	43
Reigate	17	South West Surrey	15
Ribble Valley	34	Southampton, Itchen	44
Richmond (Yorks)	36	Southampton, Test	38
Richmond Park	12	Southend West	13
Rochdale	81	Southport	41
Rochford and Southend East	23	Spelthorne	13
Romford	19	St Albans	21
Romsey	24	St Helens North	51
Rossendale and Darwen	77	St Helens South	52
Rother Valley	53	St Ives	74
Rotherham	62	Stafford	34
Rugby and Kenilworth	24	Staffordshire Moorlands	34
Ruislip - Northwood	14	Stalybridge and Hyde	67
Runnymede and Weybridge	17	Stevenage	22
Rushcliffe	25	Stockport	59
Rutland and Melton	23	Stockton North	58
Ryedale	38	Stockton South	48
Saffron Walden	26	Stoke-on-Trent Central	53
Salford	42	Stoke-on-Trent North	48
Salisbury	37	Stoke-on-Trent South	70
Scarborough and Whitby	68	Stone	27
Scunthorpe	36	Stourbridge	35
Sedgefield	68	Stratford-on-Avon	35
Selby	31	Streatham	20
Sevenoaks	20	Stretford and Urmston	58
Sheffield Central	43	Stroud	39
Sheffield, Attercliffe	45	Suffolk Coastal	25
Sheffield, Brightside	55	Sunderland North	71
Sheffield, Hallam	12	Sunderland South	73
Sheffield, Heeley	44	Surrey Heath	20
Sheffield, Hillsborough	46	Sutton and Cheam	18

Table 5.4 : Recipients in each parliamentary constituency (continued).

Parliamentary constituency	All cases	Parliamentary constituency	All cases
Sutton Coldfield	35	Wimbledon	9
Tamworth	46	Winchester	24
Tatton	29	Windsor	5
Taunton	50	Wirral South	36
Teignbridge	62	Wirral West	30
Telford	62	Witney	28
Tewkesbury	23	Woking	14
Thurrock	32	Wokingham	11
Tiverton and Honiton	44	Wolverhampton North East	59
Tonbridge and Malling	24	Wolverhampton South East	46
Tooting	9	Wolverhampton South West	35
Torbay	107	Woodspring	23
Torridge and West Devon	68	Worcester	29
Totnes	79	Workington	31
Tottenham	12	Worsley	64
Truro and St. Austell	57	Worthing West	20
Tunbridge Wells	24	Wrekin, The	48
Twickenham	13	Wycombe	33
Tyne Bridge	56	Wyre Forest	33
Tynemouth	52	Wythenshawe and Sale East	60
Upminster	19	Yeovil	48
Uxbridge	12	York, City of	86
Vale of York	55	England - constituency not known	36
Vauxhall	21		
Wakefield	46		
Wallasey	78	WALES	2,279
Walsall North	54		
Walsall South	26	Aberavon	81
Walthamstow	21	Alyn and Deeside	50
Wansbeck	49	Blaenau Gwent	98
Wansdyke	36	Brecon and Radnorshire	42
Wantage	34	Bridgend	56
Warley	49	Caernarfon	41
Warrington North	50	Caerphilly	109
Warrington South	34	Cardiff Central	38
Warwick and Leamington	38	Cardiff North	23
Watford	13	Cardiff South and Penarth	48
Waveney	51	Cardiff West	38
Wealden	20	Carmarthen East and Dinefwr	52
Weaver Vale	40	Carmarthen West and South Pembrokeshire	76
Wellingborough	42	Ceredigion	60
Wells	31	Clwyd South	52
Welwyn Hatfield	23	Clwyd West	36
Wentworth	64	Conwy	52
West Bromwich East	53	Cynon Valley	76
West Bromwich West	58	Delyn	42
West Chelmsford	29	Gower	43
West Derbyshire	33	Islwyn	72
West Dorset	41	Llanelli	54
West Ham	21	Meirionnydd Nant Conwy	24
West Lancashire	53	Merthyr Tydfil and Rhymney	112
West Suffolk	23	Monmouth	36
West Worcestershire	31	Montgomeryshire	46
Westbury	24	Neath	59
Westmorland and Lonsdale	43	Newport East	39
Weston-super-Mare	43	Newport West	47
Wigan	40	Ogmore	52

Table 5.4 : Recipients in each parliamentary constituency (continued).

Parliamentary constituency	All cases	Parliamentary constituency	All cases
Pontypridd	50	Glasgow, Rutherglen	32
Preseli Pembrokeshire	81	Glasgow, Shettleston	41
Rhondda	72	Glasgow, Springburn	35
Swansea East	62	Gordon	17
Swansea West	50	Greenock and Inverclyde	29
Torfaen	71	Hamilton North and Bellshill	48
Vale of Clwyd	59	Hamilton South	55
Vale of Glamorgan	55	Inverness East, Nairn and Lochaber	39
Wrexham	55	Kilmarnock and Loudoun	35
Ynys Mon	69	Kirkcaldy	34
Wales - constituency not known	1	Linlithgow	61
		Livingston	61
		Midlothian	39
SCOTLAND	2,661	Moray	30
		Motherwell and Wishaw	61
Aberdeen Central	23	North East Fife	23
Aberdeen North	36	North Tayside	33
Aberdeen South	13	Ochil	27
Airdrie and Shotts	78	Orkney and Shetland	19
Angus	34	Paisley North	58
Argyll and Bute	25	Paisley South	45
Ayr	31	Perth	46
Banff and Buchan	36	Ross, Skye and Inverness West	43
Caithness, Sutherland and Easter Ross	27	Roxburgh and Berwickshire	36
Carrick, Cumnock and Doon Valley	47	Stirling	34
Central Fife	54	Strathkelvin and Bearsden	37
Clydebank and Milngavie	28	Tweeddale, Ettrick and Lauderdale	35
Clydesdale	52	West Aberdeenshire and Kincardine	16
Coatbridge and Chryston	60	West Renfrewshire	48
Cumbernauld and Kilsyth	28	Western Isles	13
Cunninghame North	31	Scotland - constituency not known	1
Cunninghame South	36		
Dumbarton	30		
Dumfries	40	NORTHERN IRELAND	1,818
Dundee East	36	Belfast East	66
Dundee West	53	Belfast North	119
Dunfermline East	40	Belfast South	88
Dunfermline West	32	Belfast West	168
East Kilbride	35	East Antrim	68
East Lothian	46	East Londonderry	72
Eastwood	36	Fermanagh and South Tyrone	93
Edinburgh Central	37	Foyle	109
Edinburgh East and Musselburgh	41	Lagan Valley	95
Edinburgh North and Leith	35	Mid Ulster	115
Edinburgh South	28	Newry and Armagh	98
Edinburgh West	27	North Antrim	81
Edinburgh, Pentlands	33	North Down	68
Falkirk East	32	South Antrim	92
Falkirk West	41	South Down	113
Galloway and Upper Nithsdale	32	Strangford	64
Glasgow, Anniesland	32	Upper Bann	137
Glasgow, Baillieston	47	West Tyrone	125
Glasgow, Cathcart	33	Northern Ireland - constituency not known	47
Glasgow, Govan	18		
Glasgow, Kelvin	19		
Glasgow, Maryhill	45		
Glasgow, Pollok	43	Not allocated	18

Table 6.1 : Type and main qualifying benefit for recipients of all awards starting between October 1999 and January 2001.

	<i>United Kingdom</i>	
	All cases	Average award £ per week
All awards		
All qualifying benefits	69,192	71.71
Disability living allowance - higher rate & analogous benefits	29,562	68.61
Disability living allowance - lower rate	14,460	62.72
Severe disablement benefit	4,971	59.71
Disability premium in IS/JSA	9,233	90.41
Incapacity benefit (higher rate short term)	2,282	82.10
Incapacity benefit (long term)	8,536	81.59
Other	148	75.84
New awards ¹		
All qualifying benefits	18,791	70.92
Disability living allowance - higher rate & analogous benefits	7,021	64.05
Disability living allowance - lower rate	3,662	64.67
Severe disablement benefit	1,391	61.01
Disability premium in IS/JSA	3,026	90.67
Incapacity benefit (higher rate short term)	859	81.15
Incapacity benefit (long term)	2,806	76.95
Other	26	51.88
Renewal awards ²		
All qualifying benefits	46,198	72.48
Disability living allowance - higher rate & analogous benefits	20,353	70.43
Disability living allowance - lower rate	9,806	62.43
Severe disablement benefit	3,376	59.45
Disability premium in IS/JSA	5,829	90.68
Incapacity benefit (higher rate short term)	1,338	82.90
Incapacity benefit (long term)	5,389	84.21
Other	107	81.98
Repeat awards ³		
All qualifying benefits	4,203	66.81
Disability living allowance - higher rate & analogous benefits	2,188	66.39
Disability living allowance - lower rate	992	58.40
Severe disablement benefit	204	55.12
Disability premium in IS/JSA	378	83.77
Incapacity benefit (higher rate short term)	85	78.99
Incapacity benefit (long term)	341	78.36
Other	15	73.58

Notes :

1. New awards are made to people who have never received DWA or DPTC before.
2. Renewal awards are those following on immediately from a previous award without a break.
3. Repeat awards are those where there has been a previous award but there has been a break between claims of up to 2 years.
4. Figures for DWA awards in Great Britain starting between November 1992 and August 1999 appear in the enquiry statistics for October 1999.
5. Entrants through the fast track are not required to be receiving, or to have received, a benefit to qualify for an award. They are however included here for completeness.

(NB if the previous award ended more than 2 years earlier then the claim will be treated as 'New'.)

**Table 6.2 : Recipients of awards starting between October 1999 and January 2001
by type of award and family type.**

United Kingdom

	All Cases	Couples		Singles	
		Male	Female	Male	Female
All awards	69,192	21,269	4,546	18,660	24,717
New awards ¹	18,791	5,604	1,524	4,645	7,018
Renewal awards ²	46,198	14,509	2,707	12,733	16,249
Repeat awards ³	4,203	1,156	315	1,282	1,450

Notes :

1. New awards are made to people who have never received DWA or DPTC before.
2. Renewal awards are those following on immediately from a previous award without a break.
3. Repeat awards are those where there has been a previous award but there has been a break between claims.
4. Figures for DWA awards in Great Britain starting between November 1992 and August 1999 appear in the enquiry statistics for October 1999.

(NB if the previous award ended more than 2 years earlier then the claim will be treated as 'NEW'.)

Table 6.3 : Disallowances between October 1999 and January 2001 by reason of disallowance.*United Kingdom*

	Number of disallowances
All disallowances	13,345
All A codes	72
A1 Claimant was not in UK	67
A2 Claimant was not normally living in UK	-
A3 Partner not normally living in UK	-
A4 All claimants earnings from outside UK	-
All C codes	137
C1 Claimant's capital exceeds £16,000	111
C2 Claimant and partner's capital exceeds £16,000	19
C3 Failure to provide information about value of claimant and partner's capital	-
C4 Failure to provide information about value of claimant's capital	5
All D codes	2,774
D1 Claimant not doing paid work for an average of 16 hours a week or more	951
D2 Claimant not in paid work	881
D5 Claimant not engaged in remunerative work in relevant weeks	721
D7 Claimant not normally engaged in paid work	200
D9 Claimant not treated as in paid work - voluntary	-
D11 Claimant not treated as in paid work - charity	-
D13 Claimant working for voluntary body - expenses	-
D15 Claimant could not be treated as in paid work on the information available	19
All E codes	2,732
E1 Claimant's income higher than the level at which DPTC would become payable	2,418
E2 Claimant's entitlement less than the minimum amount of DPTC	60
E3 On the information available the claimant or partner's income was higher then the level at which DPTC would become payable	254
All other codes	
G1 Any disallowance not covered by other categories	222
I DPTC claim made more than 6 weeks before DPTC end date	2,161
J1 Qualifying benefit test not satisfied	3,557
K1 Disability test not satisfied	803
L Lapsed claim	26
W Claimant has withdrawn claim	845

Notes :

1. Figures for DWA disallowances in Great Britain occurring between November 1992 and August 1999 appear in the enquiry statistics for October 1999.

Table 6.4 : Recipients of renewal and repeat awards starting between October 1999 and January 2001 by disability type and age.

United Kingdom

	All ages	Under 30	30 - 39	40 - 49	50 - 59	60 and over
Renewal awards ¹						
Mental disabilities - treatment	3,360	412	1,311	1,107	497	33
Mental disabilities - day to day things	4,325	1,317	1,437	1,022	497	52
Mental disabilities - getting on with people	3,603	806	1,365	956	447	29
Fits and comas	341	77	145	78	36	5
Exhaustion and pain	13,034	1,328	4,118	4,324	2,823	441
Seeing	1,375	304	490	369	181	31
Hearing	741	153	258	189	121	20
Communicating	1,302	389	419	295	169	30
Getting around	1,966	203	564	666	444	89
Using your hands	2,034	431	685	570	309	39
Reaching with your arms	294	43	87	87	71	6
Repeat awards ²						
Mental disabilities - treatment	312	48	126	99	39	-
Mental disabilities - day to day things	369	126	124	82	37	-
Mental disabilities - getting on with people	339	84	132	89	34	-
Fits and comas	29	17	7	5	-	-
Exhaustion and pain	921	146	298	305	159	13
Seeing	154	43	61	37	13	-
Hearing	84	20	36	19	9	-
Communicating	123	45	44	21	13	-
Getting around	142	26	42	36	38	-
Using your hands	217	66	72	52	27	-
Reaching with your arms	38	13	7	11	7	-

Notes :

1. Renewal awards are those following on immediately from a previous award without a break.
2. Repeat awards are those where there has been a previous award but there has been a break
3. Claimants may have one or more type(s) of disability. This table records all declared and confirmed disability types for those claimants who complete form DPTC2 prior to renewal/ repeat awards.
4. Figures for DWA awards in Great Britain starting between November 1992 and August 1999 appear in the enquiry statistics for October 1999.

£5.00