



**INLAND REVENUE**  
Analytical Services Division

---

**Disabled Person's Tax Credit  
and Disability Working  
Allowance Statistics**

**Quarterly Enquiry**

**United Kingdom  
January 2000**

---



A National Statistics Publication  
© Crown Copyright 2000

# DISABLED PERSON'S TAX CREDIT AND DISABILITY WORKING ALLOWANCE STATISTICS

## QUARTERLY ENQUIRY -

### UNITED KINGDOM JANUARY 2000

| <b>Contents</b>                             | <b>PAGE</b> |
|---|-------------|
| Introduction .....                          | 1           |
| Main findings .....                         | 1           |
| List of tables .....                        | 2           |
| Section 1 : Time series .....               | 4           |
| Section 2 : Family type .....               | 7           |
| Section 3 : Amount of award .....           | 10          |
| Section 4 : Earnings and other income ..... | 16          |
| Section 5 : Regional analysis .....         | 21          |
| Section 6 : Historical DPTC .....           | 23          |

Contact point for enquiries and requests for further copies:-

Analytical Services Division (S1)  
Inland Revenue  
Room F1 - West Wing  
Somerset House  
London  
WC2R 1LB  
☎ : 020 - 7438 6275

#### A NATIONAL STATISTICS PUBLICATION

National Statistics are produced to a high professional standards set out in the National Statistics Code of Practice. They undergo regular quality assurance reviews to ensure that they meet customer needs. They are produced free from any political interference.

For general enquiries about National Statistics, contact the National Statistics Public Enquiry Service on

☎ : 020 - 7533 5888  
minicom : 01633 812399  
E-mail : [info@statistics.gov.uk](mailto:info@statistics.gov.uk)  
Fax : 01633 652747

Letters : room DG/18, 1 Drummond Gate, LONDON, SW1V 2QQ

You can also find National Statistics on the internet - go to [www.statistics.gov.uk](http://www.statistics.gov.uk)

## Introduction

Disabled Person's Tax Credit (DPTC) replaced Disability Working Allowance (DWA) from 5th October 1999. It is a tax credit available to people who are working at least sixteen hours a week and who have an illness or disability which puts them at a disadvantage in getting a job.

The tables cover awards current at 31st January 2000. Awards of both DPTC and DWA last for 26 weeks, so awards of both types were current at that date. Some of the tables show separate figures for DPTC and DWA awards, while others show figures for the two types of award combined. Time series are available only for awards made in Great Britain (excluding Northern Ireland). Section 6 covers DPTC awards and disallowances starting between October 1999 and January 2000.

The figures are based on a 100% scan of awards. They have been compiled four months after the reference date, by which time almost all awards current at the reference date have been processed and entered onto the computer system. The tables cover awards made in the United Kingdom, unless otherwise stated. Categories containing less than five cases are shown as '-'.

## Main Findings

There were 20,992 DPTC/DWA awards current at 31st January 2000, nearly 8 per cent higher than in October 1999. 14,965 were DPTC awards and 6,027 were DWA awards.

Families who did not hold DWA awards could apply for DPTC awards to start from October 1999. Families previously with DWA awards could apply for DPTC awards only on renewal, which could fall between October 1999 and April 2000. So DPTC awards current at 31 Jan 2000 are not representative of all DPTC awards that will be current after April 2000. Although separate figures for DPTC and DWA awards are presented for completeness, caution should therefore be exercised in making comparisons between the two types of award.

The average DPTC award was £68.77 per week and the average DWA award was £59.93.

42 per cent of recipients had children. For DPTC recipients, their average weekly award was £101.76, compared with £44.20 for recipients with no children. The respective averages for DWA awards were £91.45 and £38.73.

In 44 per cent of the cases higher rate disability living allowance, or an analogous benefit, was the main qualifying benefit for DPTC/DWA. Lower rate disability living allowance was the main qualifying benefit for a further 21 per cent.

For families with children, 58% of DPTC awards and 45% of DWA awards were over £100 per week.

For DPTC awards, the average gross weekly earnings of the main earner was £113.42. For DWA awards the average was £96.85.

## List of Tables

### Section 1 : Time series

|           |  |
|-----------|--|
| Table 1.1 | DPTC/DWA awards by family type, January 1993 - January 2000.                       |
| Chart 1   | DPTC/DWA awards by family type, Great Britain, January 1993 - January 2000.        |
| Table 1.2 | Average DPTC/DWA award by family type, January 1993 - January 2000.                |
| Chart 2   | Average DPTC/DWA award by family type, Great Britain, January 1993 - January 2000. |

### Section 2 : Family type

|           |  |
|-----------|--|
| Table 2.1 | Family type and age by sex of recipient. (DPTC/DWA)  |
| Chart 3   | Age of recipient and family type. (DPTC/DWA)   |
| Table 2.2 | Family type, number and average weekly amount of award.  |
| Chart 4   | Family type. (DPTC/DWA)  |
| Table 2.3 | Family type and main qualifying benefit, number and average weekly amount of award. (DPTC/DWA) |

### Section 3 : Amount of award

|            |  |
|------------|--|
| Table 3.1  | Family type by weekly amount of award. (DPTC/DWA)          |
| Table 3.1A | Family type by weekly amount of award. (DWA)               |
| Table 3.1B | Family type by weekly amount of award. (DPTC)              |
| Table 3.2  | Family size and type by weekly amount of award. (DPTC/DWA) |
| Chart 5    | Number of children by family type. (DPTC/DWA)              |
| Table 3.2A | Family size and type by weekly amount of award. (DWA)      |
| Chart 5A   | Number of children by family type. (DWA)                   |
| Table 3.2B | Family size and type by weekly amount of award. (DPTC)     |
| Chart 5B   | Number of children by family type. (DPTC)                  |

**Section 4 : Earnings and other income**

|            |   |
|------------|---|
| Table 4.1  | Family type by gross weekly earnings of main earner. (DPTC/DWA)           |
| Chart 6    | Gross weekly earnings of main earner and family type. (DPTC/DWA)          |
| Table 4.1A | Family type by gross weekly earnings of main earner. (DWA)                |
| Chart 6A   | Gross weekly earnings of main earner and family type. (DWA)               |
| Table 4.1B | Family type by gross weekly earnings of main earner. (DPTC)               |
| Chart 6B   | Gross weekly earnings of main earner and family type. (DPTC)              |
| Table 4.2  | Other benefits in receipt at the time of claim by family type. (DPTC/DWA) |
| Table 4.3  | Other income in receipt at the time of claim by family type. (DPTC/DWA)   |

**Section 5 : Regional analysis**

|           |   |
|-----------|---|
| Table 5.1 | Number of awards by Government Office Region and family type. (DPTC/DWA)      |
| Table 5.2 | Average award by Government Office Region and family type. (DPTC/DWA)         |
| Table 5.3 | Number of awards by Government Office Region and employment status (DPTC/DWA) |
| Table 5.4 | Average award by Government Office Region and employment status. (DPTC/DWA)   |

**Section 6 : Historical DPTC**

|             |   |
|-------------|---|
| Table 6.1   | Type and main qualifying benefit of all DPTC awards starting between October 1999 and January 2000.                   |
| Table 6.2 : | DPTC awards starting between October 1999 and January 2000 by type of award and family type.                          |
| Table 6.3 : | DPTC disallowances between October 1999 and January 2000 by reason of disallowance.                                   |
| Table 6.4 : | Renewal and repeat DPTC awards starting between October 1999 and January 2000 by disability type and age of claimant. |

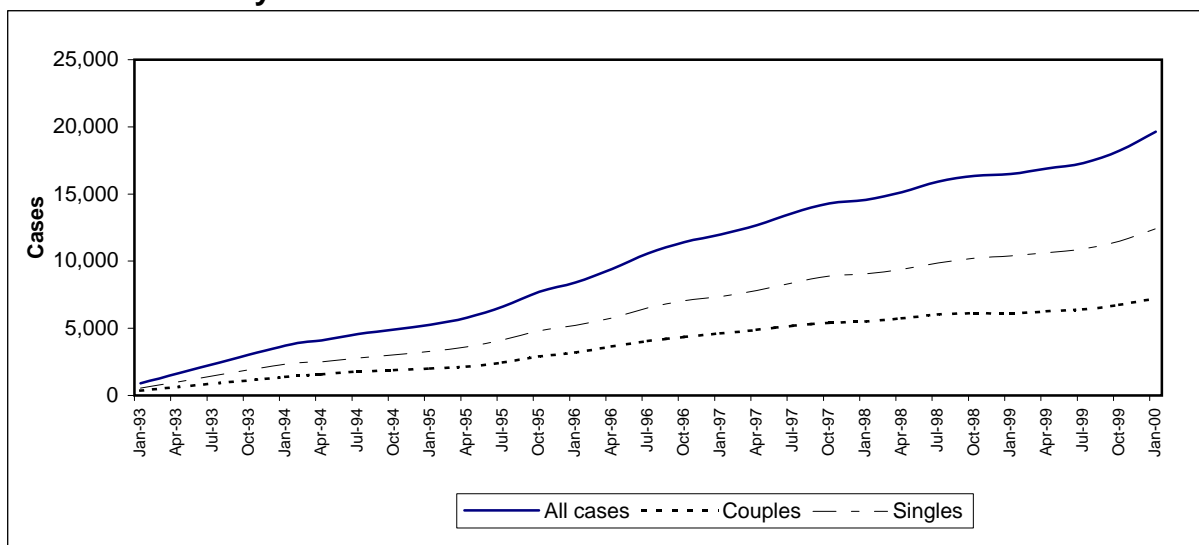
## **Section 1 : Time series**

This section shows the number of awards in Great Britain, and their average weekly value, for each quarter back to January 1993. Figures for the United Kingdom are shown from October 1999.

The figures for the most recent back quarters are slightly different to those published last time, as they take account of awards made after the scan for the previous publication and then backdated.

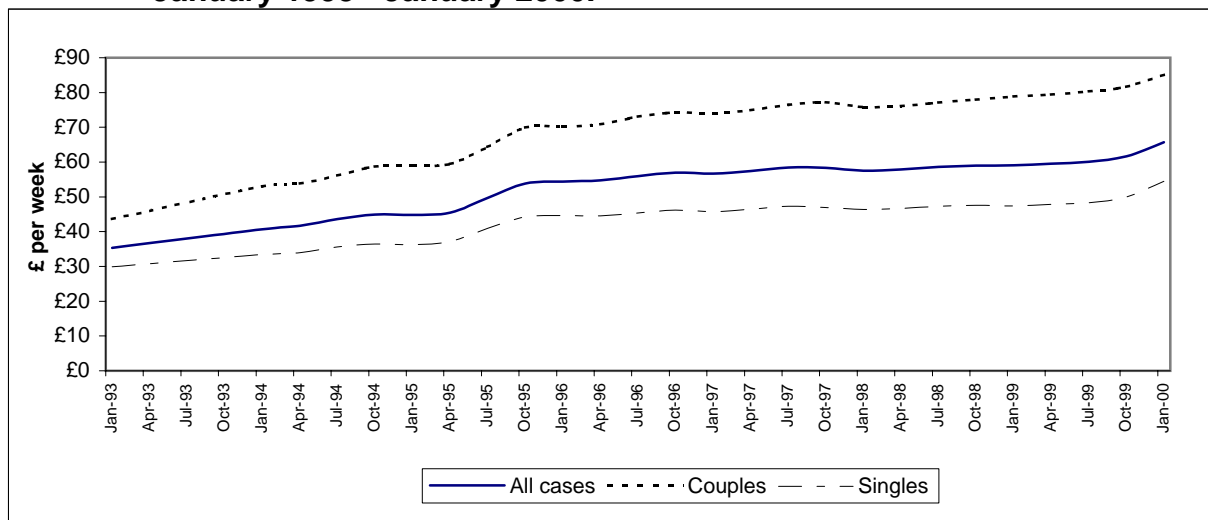
**Table 1.1 : DPTC/DWA awards by family type, January 1993 - January 2000.**

|        | All cases     |                | Couples       |                | Singles       |                |
|--------|---------------|----------------|---------------|----------------|---------------|----------------|
|        | Great Britain | United Kingdom | Great Britain | United Kingdom | Great Britain | United Kingdom |
| Jan-93 | 904           | -              | 361           | -              | 543           | -              |
| Jan-94 | 3,722         | -              | 1,392         | -              | 2,330         | -              |
| Apr-94 | 4,090         | -              | 1,582         | -              | 2,508         | -              |
| Jul-94 | 4,577         | -              | 1,781         | -              | 2,796         | -              |
| Oct-94 | 4,914         | -              | 1,876         | -              | 3,038         | -              |
| Jan-95 | 5,277         | -              | 1,990         | -              | 3,287         | -              |
| Apr-95 | 5,782         | -              | 2,152         | -              | 3,630         | -              |
| Jul-95 | 6,615         | -              | 2,465         | -              | 4,150         | -              |
| Oct-95 | 7,719         | -              | 2,899         | -              | 4,820         | -              |
| Jan-96 | 8,406         | -              | 3,186         | -              | 5,220         | -              |
| Apr-96 | 9,416         | -              | 3,638         | -              | 5,778         | -              |
| Jul-96 | 10,577        | -              | 4,049         | -              | 6,528         | -              |
| Oct-96 | 11,409        | -              | 4,359         | -              | 7,050         | -              |
| Jan-97 | 11,979        | -              | 4,620         | -              | 7,359         | -              |
| Apr-97 | 12,689        | -              | 4,881         | -              | 7,808         | -              |
| Jul-97 | 13,575        | -              | 5,191         | -              | 8,384         | -              |
| Oct-97 | 14,306        | -              | 5,405         | -              | 8,901         | -              |
| Jan-98 | 14,564        | -              | 5,500         | -              | 9,064         | -              |
| Apr-98 | 15,145        | -              | 5,753         | -              | 9,392         | -              |
| Jul-98 | 15,910        | -              | 6,040         | -              | 9,870         | -              |
| Oct-98 | 16,353        | -              | 6,125         | -              | 10,228        | -              |
| Jan-99 | 16,483        | -              | 6,093         | -              | 10,390        | -              |
| Apr-99 | 16,904        | -              | 6,263         | -              | 10,641        | -              |
| Jul-99 | 17,305        | -              | 6,400         | -              | 10,905        | -              |
| Oct-99 | 18,222        | 19,445         | 6,738         | 7,207          | 11,484        | 12,238         |
| Jan-00 | 19,649        | 20,992         | 7,221         | 7,733          | 12,428        | 13,259         |

**Chart 1 : DPTC/DWA awards by family type, Great Britain, January 1993 - January 2000.**

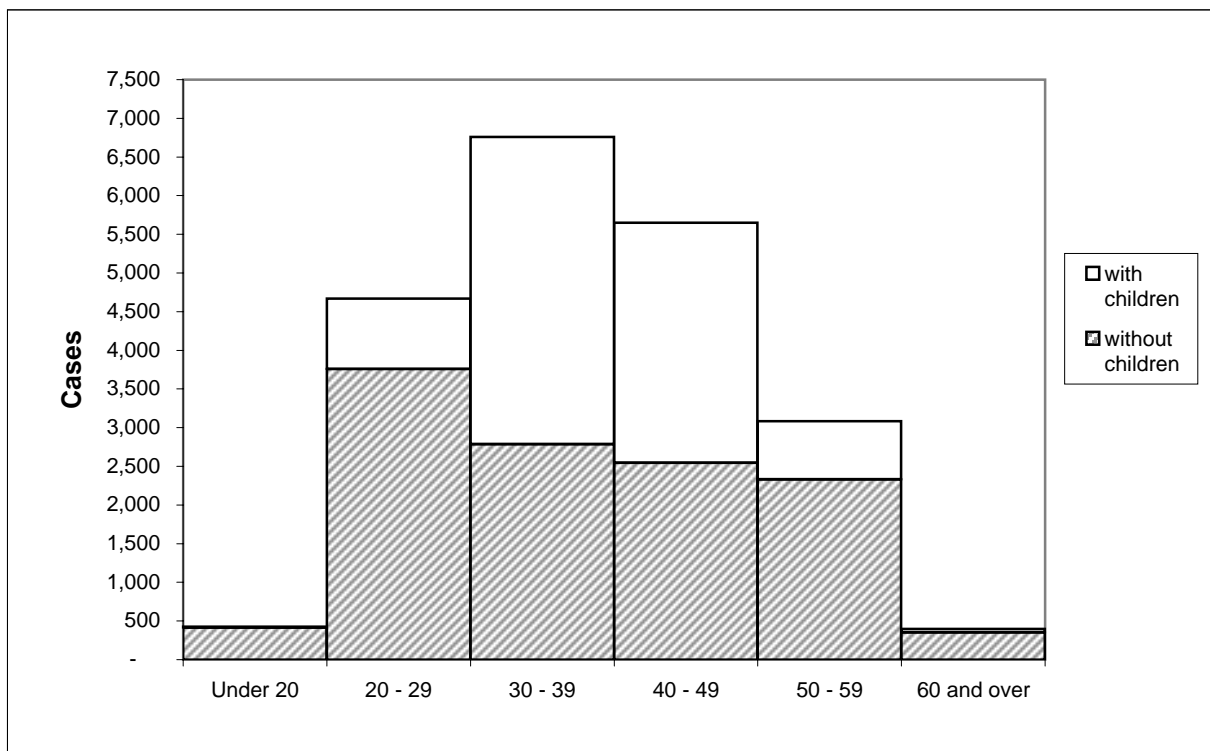
**Table 1.2 : Average DPTC/DWA award by family type, January 1993 - January 2000.**

|        | <i>£ per week</i>    |                       |                      |                       |                      |                       |
|--------|----------------------|-----------------------|----------------------|-----------------------|----------------------|-----------------------|
|        | <u>All cases</u>     |                       | <u>Couples</u>       |                       | <u>Singles</u>       |                       |
|        | <u>Great Britain</u> | <u>United Kingdom</u> | <u>Great Britain</u> | <u>United Kingdom</u> | <u>Great Britain</u> | <u>United Kingdom</u> |
| Jan-93 | 35.37                | -                     | 43.59                | -                     | 29.91                | -                     |
| Jan-94 | 40.71                | -                     | 53.03                | -                     | 33.36                | -                     |
| Apr-94 | 41.69                | -                     | 53.87                | -                     | 34.00                | -                     |
| Jul-94 | 43.59                | -                     | 56.12                | -                     | 35.60                | -                     |
| Oct-94 | 44.94                | -                     | 58.75                | -                     | 36.41                | -                     |
| Jan-95 | 44.79                | -                     | 58.93                | -                     | 36.23                | -                     |
| Apr-95 | 45.46                | -                     | 59.43                | -                     | 37.17                | -                     |
| Jul-95 | 49.65                | -                     | 64.32                | -                     | 40.94                | -                     |
| Oct-95 | 53.87                | -                     | 69.90                | -                     | 44.22                | -                     |
| Jan-96 | 54.35                | -                     | 70.25                | -                     | 44.65                | -                     |
| Apr-96 | 54.72                | -                     | 70.84                | -                     | 44.57                | -                     |
| Jul-96 | 55.97                | -                     | 73.10                | -                     | 45.35                | -                     |
| Oct-96 | 56.92                | -                     | 74.22                | -                     | 46.23                | -                     |
| Jan-97 | 56.69                | -                     | 74.06                | -                     | 45.78                | -                     |
| Apr-97 | 57.39                | -                     | 74.89                | -                     | 46.44                | -                     |
| Jul-97 | 58.46                | -                     | 76.47                | -                     | 47.30                | -                     |
| Oct-97 | 58.37                | -                     | 77.22                | -                     | 46.92                | -                     |
| Jan-98 | 57.52                | -                     | 75.83                | -                     | 46.41                | -                     |
| Apr-98 | 57.84                | -                     | 76.08                | -                     | 46.67                | -                     |
| Jul-98 | 58.63                | -                     | 77.10                | -                     | 47.33                | -                     |
| Oct-98 | 58.97                | -                     | 77.98                | -                     | 47.58                | -                     |
| Jan-99 | 59.05                | -                     | 78.89                | -                     | 47.41                | -                     |
| Apr-99 | 59.53                | -                     | 79.38                | -                     | 47.84                | -                     |
| Jul-99 | 60.13                | -                     | 80.31                | -                     | 48.29                | -                     |
| Oct-99 | 61.66                | 62.09                 | 81.64                | 82.16                 | 49.94                | 50.27                 |
| Jan-00 | 65.71                | 66.23                 | 85.08                | 85.89                 | 54.45                | 54.77                 |

**Chart 2 : Average DPTC/DWA award by family type, Great Britain, January 1993 - January 2000.**

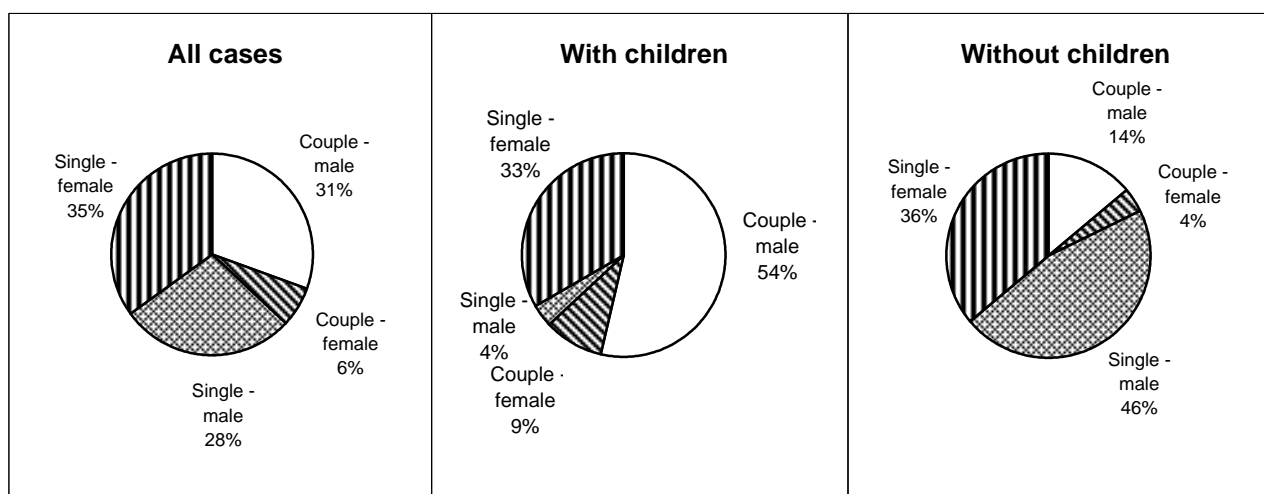
**Table 2.1 : Family type and age by sex of recipient. (DPTC/DWA)**

|                         | <i>United Kingdom</i> |        |    |        |    |
|-------------------------|-----------------------|--------|----|--------|----|
|                         | All cases             | Male   | %  | Female | %  |
| <b>All cases</b>        | 20,992                | 12,349 | 59 | 8,643  | 41 |
| Under 20                | 428                   | 256    | 60 | 172    | 40 |
| 20 - 29                 | 4,670                 | 2,638  | 56 | 2,032  | 44 |
| 30 - 39                 | 6,759                 | 3,917  | 58 | 2,842  | 42 |
| 40 - 49                 | 5,651                 | 3,307  | 59 | 2,344  | 41 |
| 50 - 59                 | 3,085                 | 1,877  | 61 | 1,208  | 39 |
| 60 and over             | 399                   | 354    | 89 | 45     | 11 |
| <b>With children</b>    | 8,809                 | 5,042  | 57 | 3,767  | 43 |
| Under 20                | 13                    | -      | 31 | 9      | 69 |
| 20 - 29                 | 912                   | 408    | 45 | 504    | 55 |
| 30 - 39                 | 3,974                 | 2,168  | 55 | 1,806  | 45 |
| 40 - 49                 | 3,105                 | 1,856  | 60 | 1,249  | 40 |
| 50 - 59                 | 756                   | 562    | 74 | 194    | 26 |
| 60 and over             | 49                    | 44     | 90 | 5      | 10 |
| <b>Without children</b> | 12,183                | 7,307  | 60 | 4,876  | 40 |
| Under 20                | 415                   | 252    | 61 | 163    | 39 |
| 20 - 29                 | 3,758                 | 2,230  | 59 | 1,528  | 41 |
| 30 - 39                 | 2,785                 | 1,749  | 63 | 1,036  | 37 |
| 40 - 49                 | 2,546                 | 1,451  | 57 | 1,095  | 43 |
| 50 - 59                 | 2,329                 | 1,315  | 56 | 1,014  | 44 |
| 60 and over             | 350                   | 310    | 89 | 40     | 11 |

**Chart 3 : Age of recipient and family type. (DPTC/DWA)**

**Table 2.2 : Family type, number and average weekly amount of award.***United Kingdom*

|                         | All cases | Average<br>award<br>£ per week | DWA   | Average<br>DWA award<br>£ per week | DPTC   | Average<br>DPTC award<br>£ per week |
|-------------------------|-----------|--------------------------------|-------|------------------------------------|--------|-------------------------------------|
| <b>All cases</b>        | 20,992    | 66.23                          | 6,027 | 59.93                              | 14,965 | 68.77                               |
| Couple - male           | 6,431     | 88.15                          | 1,858 | 83.03                              | 4,573  | 90.23                               |
| Couple - female         | 1,302     | 74.74                          | 325   | 71.05                              | 977    | 75.96                               |
| Single - male           | 5,918     | 41.54                          | 1,774 | 36.83                              | 4,144  | 43.56                               |
| Single - female         | 7,341     | 65.43                          | 2,070 | 57.25                              | 5,271  | 68.64                               |
| <b>With children</b>    | 8,809     | 98.92                          | 2,424 | 91.45                              | 6,385  | 101.76                              |
| Couple - male           | 4,732     | 97.41                          | 1,327 | 91.80                              | 3,405  | 99.59                               |
| Couple - female         | 826       | 87.03                          | 214   | 82.67                              | 612    | 88.55                               |
| Single - male           | 310       | 97.58                          | 80    | 93.75                              | 230    | 98.91                               |
| Single - female         | 2,941     | 104.83                         | 803   | 92.97                              | 2,138  | 109.29                              |
| <b>Without children</b> | 12,183    | 42.60                          | 3,603 | 38.73                              | 8,580  | 44.22                               |
| Couple - male           | 1,699     | 62.36                          | 531   | 61.10                              | 1,168  | 62.93                               |
| Couple - female         | 476       | 53.41                          | 111   | 48.65                              | 365    | 54.86                               |
| Single - male           | 5,608     | 38.44                          | 1,694 | 34.14                              | 3,914  | 40.30                               |
| Single - female         | 4,400     | 39.09                          | 1,267 | 34.61                              | 3,133  | 40.90                               |

**Chart 4 : Family type. (DPTC/DWA)**

**Table 2.3 : Family type and main qualifying benefit, number and average weekly amount of award. (DPTC/DWA)**

|  | <i>United Kingdom</i> |   |
|--|-----------------------|---|
|  | <b>All cases</b>      | <b>Average<br/>award<br/>£ per week</b> |
| <b>All cases</b>   | 20,992                | 66.23                                   |
| Higher rate DLA and analogous benefits                     | 9,262                 | 63.90                                   |
| Lower rate DLA   | 4,353                 | 57.68                                   |
| Severe disablement benefit                                 | 1,521                 | 55.89                                   |
| Disability premium in income support/jobseeker's allowance | 2,712                 | 83.19                                   |
| Disability premium in housing benefit                      | 27                    | 77.70                                   |
| Disability premium in council tax benefit                  | 11                    | 73.65                                   |
| Incapacity benefit (higher rate short term)                | 608                   | 73.24                                   |
| Incapacity benefit (long term)                             | 2,498                 | 75.79                                   |
| <b>With children</b>                                       | 8,809                 | 98.92                                   |
| Higher rate DLA and analogous benefits                     | 4,018                 | 93.42                                   |
| Lower rate DLA   | 1,500                 | 93.80                                   |
| Severe disablement benefit                                 | 323                   | 107.11                                  |
| Disability premium in income support/jobseeker's allowance | 1,438                 | 113.50                                  |
| Disability premium in housing benefit                      | 16                    | 103.66                                  |
| Disability premium in council tax benefit                  | -                     | -                                       |
| Incapacity benefit (higher rate short term)                | 292                   | 100.19                                  |
| Incapacity benefit (long term)                             | 1,218                 | 103.55                                  |
| <b>Without children</b>                                    | 12,183                | 42.60                                   |
| Higher rate DLA and analogous benefits                     | 5,244                 | 41.28                                   |
| Lower rate DLA   | 2,853                 | 38.69                                   |
| Severe disablement benefit                                 | 1,198                 | 42.08                                   |
| Disability premium in income support/jobseeker's allowance | 1,274                 | 48.98                                   |
| Disability premium in housing benefit                      | 11                    | 39.93                                   |
| Disability premium in council tax benefit                  | 7                     | 51.16                                   |
| Incapacity benefit (higher rate short term)                | 316                   | 48.33                                   |
| Incapacity benefit (long term)                             | 1,280                 | 49.37                                   |

**Table 3.1 : Family type by weekly amount of award. (DPTC/DWA)***United Kingdom*

|                         | All cases | Weekly amount of award |                    |                    |                    |                    |                      |                     |
|-------------------------|-----------|------------------------|--------------------|--------------------|--------------------|--------------------|----------------------|---------------------|
|                         |           | Under<br>£20.00        | £20.00 -<br>£39.99 | £40.00 -<br>£59.99 | £60.00 -<br>£79.99 | £80.00 -<br>£99.99 | £100.00 -<br>£119.99 | £120.00<br>and over |
| <b>All cases</b>        |           |                        |                    |                    |                    |                    |                      |                     |
| <b>All cases</b>        | 20,992    | 1,784                  | 4,244              | 5,908              | 1,977              | 2,303              | 2,174                | 2,602               |
| Male                    | 12,349    | 1,126                  | 2,476              | 3,331              | 1,355              | 1,461              | 1,072                | 1,528               |
| Female                  | 8,643     | 658                    | 1,768              | 2,577              | 622                | 842                | 1,102                | 1,074               |
| <b>Couples</b>          |           |                        |                    |                    |                    |                    |                      |                     |
| <b>Couples</b>          | 7,733     | 404                    | 735                | 995                | 1,175              | 1,643              | 1,124                | 1,657               |
| Male                    | 6,431     | 285                    | 559                | 788                | 973                | 1,401              | 960                  | 1,465               |
| Female                  | 1,302     | 119                    | 176                | 207                | 202                | 242                | 164                  | 192                 |
| <b>Singles</b>          |           |                        |                    |                    |                    |                    |                      |                     |
| <b>Singles</b>          | 13,259    | 1,380                  | 3,509              | 4,913              | 802                | 660                | 1,050                | 945                 |
| Male                    | 5,918     | 841                    | 1,917              | 2,543              | 382                | 60                 | 112                  | 63                  |
| Female                  | 7,341     | 539                    | 1,592              | 2,370              | 420                | 600                | 938                  | 882                 |
| <b>With children</b>    |           |                        |                    |                    |                    |                    |                      |                     |
| <b>All cases</b>        | 8,809     | 230                    | 464                | 766                | 1,047              | 1,526              | 2,174                | 2,602               |
| Male                    | 5,042     | 154                    | 333                | 497                | 646                | 812                | 1,072                | 1,528               |
| Female                  | 3,767     | 76                     | 131                | 269                | 401                | 714                | 1,102                | 1,074               |
| <b>Couples</b>          |           |                        |                    |                    |                    |                    |                      |                     |
| <b>Couples</b>          | 5,558     | 202                    | 406                | 572                | 731                | 866                | 1,124                | 1,657               |
| Male                    | 4,732     | 150                    | 325                | 468                | 612                | 752                | 960                  | 1,465               |
| Female                  | 826       | 52                     | 81                 | 104                | 119                | 114                | 164                  | 192                 |
| <b>Singles</b>          |           |                        |                    |                    |                    |                    |                      |                     |
| <b>Singles</b>          | 3,251     | 28                     | 58                 | 194                | 316                | 660                | 1,050                | 945                 |
| Male                    | 310       | -                      | 8                  | 29                 | 34                 | 60                 | 112                  | 63                  |
| Female                  | 2,941     | 24                     | 50                 | 165                | 282                | 600                | 938                  | 882                 |
| <b>Without children</b> |           |                        |                    |                    |                    |                    |                      |                     |
| <b>All cases</b>        | 12,183    | 1,554                  | 3,780              | 5,142              | 930                | 777                | -                    | -                   |
| Male                    | 7,307     | 972                    | 2,143              | 2,834              | 709                | 649                | -                    | -                   |
| Female                  | 4,876     | 582                    | 1,637              | 2,308              | 221                | 128                | -                    | -                   |
| <b>Couples</b>          |           |                        |                    |                    |                    |                    |                      |                     |
| <b>Couples</b>          | 2,175     | 202                    | 329                | 423                | 444                | 777                | -                    | -                   |
| Male                    | 1,699     | 135                    | 234                | 320                | 361                | 649                | -                    | -                   |
| Female                  | 476       | 67                     | 95                 | 103                | 83                 | 128                | -                    | -                   |
| <b>Singles</b>          |           |                        |                    |                    |                    |                    |                      |                     |
| <b>Singles</b>          | 10,008    | 1,352                  | 3,451              | 4,719              | 486                | -                  | -                    | -                   |
| Male                    | 5,608     | 837                    | 1,909              | 2,514              | 348                | -                  | -                    | -                   |
| Female                  | 4,400     | 515                    | 1,542              | 2,205              | 138                | -                  | -                    | -                   |

**Table 3.1A : Family type by weekly amount of award. (DWA)***United Kingdom*

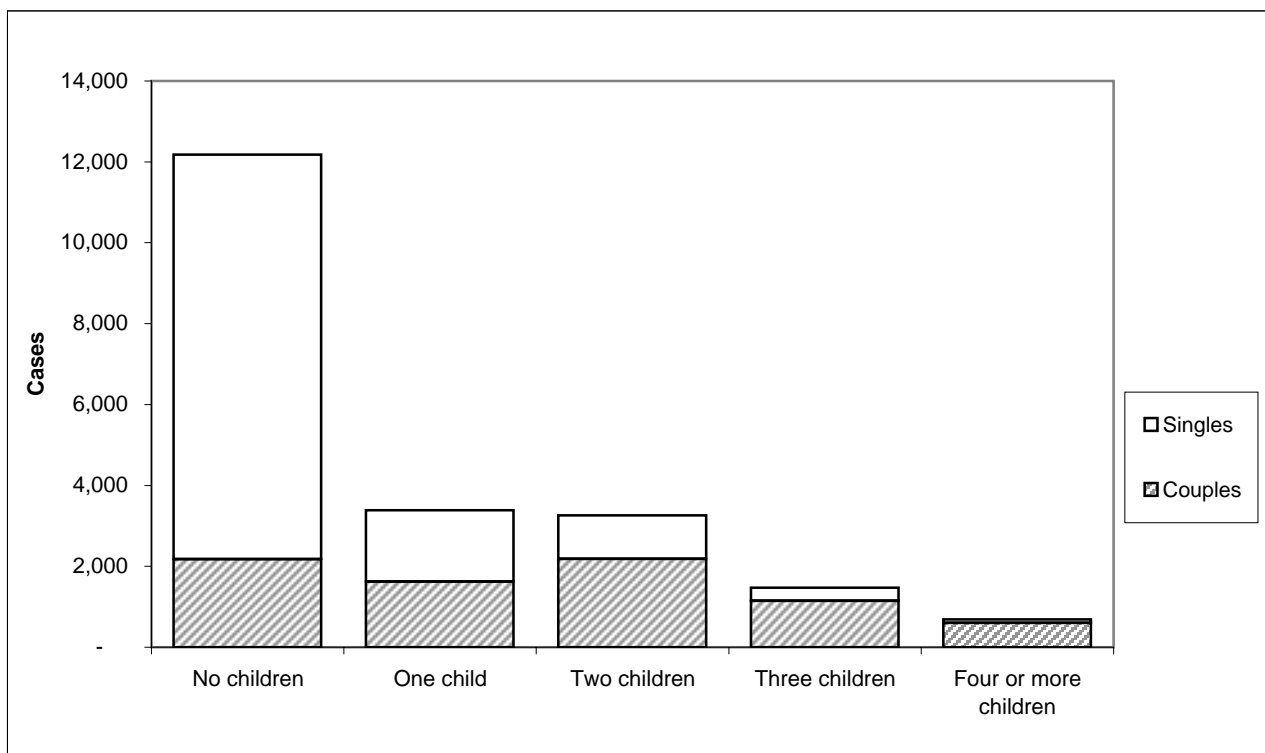
|                         | All DWA cases | Weekly amount of award |                 |                 |                 |                 |                   |                  |
|-------------------------|---------------|------------------------|-----------------|-----------------|-----------------|-----------------|-------------------|------------------|
|                         |               | Under £20.00           | £20.00 - £39.99 | £40.00 - £59.99 | £60.00 - £79.99 | £80.00 - £99.99 | £100.00 - £119.99 | £120.00 and over |
| <b>All DWA cases</b>    |               |                        |                 |                 |                 |                 |                   |                  |
| <b>All cases</b>        | 6,027         | 822                    | 1,289           | 1,489           | 605             | 737             | 583               | 502              |
| Male                    | 3,632         | 519                    | 753             | 844             | 412             | 466             | 300               | 338              |
| Female                  | 2,395         | 303                    | 536             | 645             | 193             | 271             | 283               | 164              |
| <b>Couples</b>          | 2,183         | 129                    | 234             | 302             | 329             | 498             | 327               | 364              |
| Male                    | 1,858         | 97                     | 188             | 239             | 286             | 441             | 282               | 325              |
| Female                  | 325           | 32                     | 46              | 63              | 43              | 57              | 45                | 39               |
| <b>Singles</b>          | 3,844         | 693                    | 1,055           | 1,187           | 276             | 239             | 256               | 138              |
| Male                    | 1,774         | 422                    | 565             | 605             | 126             | 25              | 18                | 13               |
| Female                  | 2,070         | 271                    | 490             | 582             | 150             | 214             | 238               | 125              |
| <b>With children</b>    |               |                        |                 |                 |                 |                 |                   |                  |
| <b>All cases</b>        | 2,424         | 77                     | 147             | 274             | 345             | 496             | 583               | 502              |
| Male                    | 1,407         | 51                     | 105             | 152             | 208             | 253             | 300               | 338              |
| Female                  | 1,017         | 26                     | 42              | 122             | 137             | 243             | 283               | 164              |
| <b>Couples</b>          | 1,541         | 62                     | 123             | 186             | 222             | 257             | 327               | 364              |
| Male                    | 1,327         | 51                     | 102             | 147             | 192             | 228             | 282               | 325              |
| Female                  | 214           | 11                     | 21              | 39              | 30              | 29              | 45                | 39               |
| <b>Singles</b>          | 883           | 15                     | 24              | 88              | 123             | 239             | 256               | 138              |
| Male                    | 80            | -                      | -               | 5               | 16              | 25              | 18                | 13               |
| Female                  | 803           | 15                     | 21              | 83              | 107             | 214             | 238               | 125              |
| <b>Without children</b> |               |                        |                 |                 |                 |                 |                   |                  |
| <b>All cases</b>        | 3,603         | 745                    | 1,142           | 1,215           | 260             | 241             | -                 | -                |
| Male                    | 2,225         | 468                    | 648             | 692             | 204             | 213             | -                 | -                |
| Female                  | 1,378         | 277                    | 494             | 523             | 56              | 28              | -                 | -                |
| <b>Couples</b>          | 642           | 67                     | 111             | 116             | 107             | 241             | -                 | -                |
| Male                    | 531           | 46                     | 86              | 92              | 94              | 213             | -                 | -                |
| Female                  | 111           | 21                     | 25              | 24              | 13              | 28              | -                 | -                |
| <b>Singles</b>          | 2,961         | 678                    | 1,031           | 1,099           | 153             | -               | -                 | -                |
| Male                    | 1,694         | 422                    | 562             | 600             | 110             | -               | -                 | -                |
| Female                  | 1,267         | 256                    | 469             | 499             | 43              | -               | -                 | -                |

**Table 3.1B : Family type by weekly amount of award. (DPTC)***United Kingdom*

|                         | All DPTC cases | Weekly amount of award |                 |                 |                 |                 |                   |                  |
|-------------------------|----------------|------------------------|-----------------|-----------------|-----------------|-----------------|-------------------|------------------|
|                         |                | Under £20.00           | £20.00 - £39.99 | £40.00 - £59.99 | £60.00 - £79.99 | £80.00 - £99.99 | £100.00 - £119.99 | £120.00 and over |
| <b>All DPTC cases</b>   |                |                        |                 |                 |                 |                 |                   |                  |
| <b>All cases</b>        | 14,965         | 962                    | 2,955           | 4,419           | 1,372           | 1,566           | 1,591             | 2,100            |
| Male                    | 8,717          | 607                    | 1,723           | 2,487           | 943             | 995             | 772               | 1,190            |
| Female                  | 6,248          | 355                    | 1,232           | 1,932           | 429             | 571             | 819               | 910              |
| <b>Couples</b>          | 5,550          | 275                    | 501             | 693             | 846             | 1,145           | 797               | 1,293            |
| Male                    | 4,573          | 188                    | 371             | 549             | 687             | 960             | 678               | 1,140            |
| Female                  | 977            | 87                     | 130             | 144             | 159             | 185             | 119               | 153              |
| <b>Singles</b>          | 9,415          | 687                    | 2,454           | 3,726           | 526             | 421             | 794               | 807              |
| Male                    | 4,144          | 419                    | 1,352           | 1,938           | 256             | 35              | 94                | 50               |
| Female                  | 5,271          | 268                    | 1,102           | 1,788           | 270             | 386             | 700               | 757              |
| <b>With children</b>    |                |                        |                 |                 |                 |                 |                   |                  |
| <b>All cases</b>        | 6,385          | 153                    | 317             | 492             | 702             | 1,030           | 1,591             | 2,100            |
| Male                    | 3,635          | 103                    | 228             | 345             | 438             | 559             | 772               | 1,190            |
| Female                  | 2,750          | 50                     | 89              | 147             | 264             | 471             | 819               | 910              |
| <b>Couples</b>          | 4,017          | 140                    | 283             | 386             | 509             | 609             | 797               | 1,293            |
| Male                    | 3,405          | 99                     | 223             | 321             | 420             | 524             | 678               | 1,140            |
| Female                  | 612            | 41                     | 60              | 65              | 89              | 85              | 119               | 153              |
| <b>Singles</b>          | 2,368          | 13                     | 34              | 106             | 193             | 421             | 794               | 807              |
| Male                    | 230            | -                      | 5               | 24              | 18              | 35              | 94                | 50               |
| Female                  | 2,138          | 9                      | 29              | 82              | 175             | 386             | 700               | 757              |
| <b>Without children</b> |                |                        |                 |                 |                 |                 |                   |                  |
| <b>All cases</b>        | 8,580          | 809                    | 2,638           | 3,927           | 670             | 536             | -                 | -                |
| Male                    | 5,082          | 504                    | 1,495           | 2,142           | 505             | 436             | -                 | -                |
| Female                  | 3,498          | 305                    | 1,143           | 1,785           | 165             | 100             | -                 | -                |
| <b>Couples</b>          | 1,533          | 135                    | 218             | 307             | 337             | 536             | -                 | -                |
| Male                    | 1,168          | 89                     | 148             | 228             | 267             | 436             | -                 | -                |
| Female                  | 365            | 46                     | 70              | 79              | 70              | 100             | -                 | -                |
| <b>Singles</b>          | 7,047          | 674                    | 2,420           | 3,620           | 333             | -               | -                 | -                |
| Male                    | 3,914          | 415                    | 1,347           | 1,914           | 238             | -               | -                 | -                |
| Female                  | 3,133          | 259                    | 1,073           | 1,706           | 95              | -               | -                 | -                |

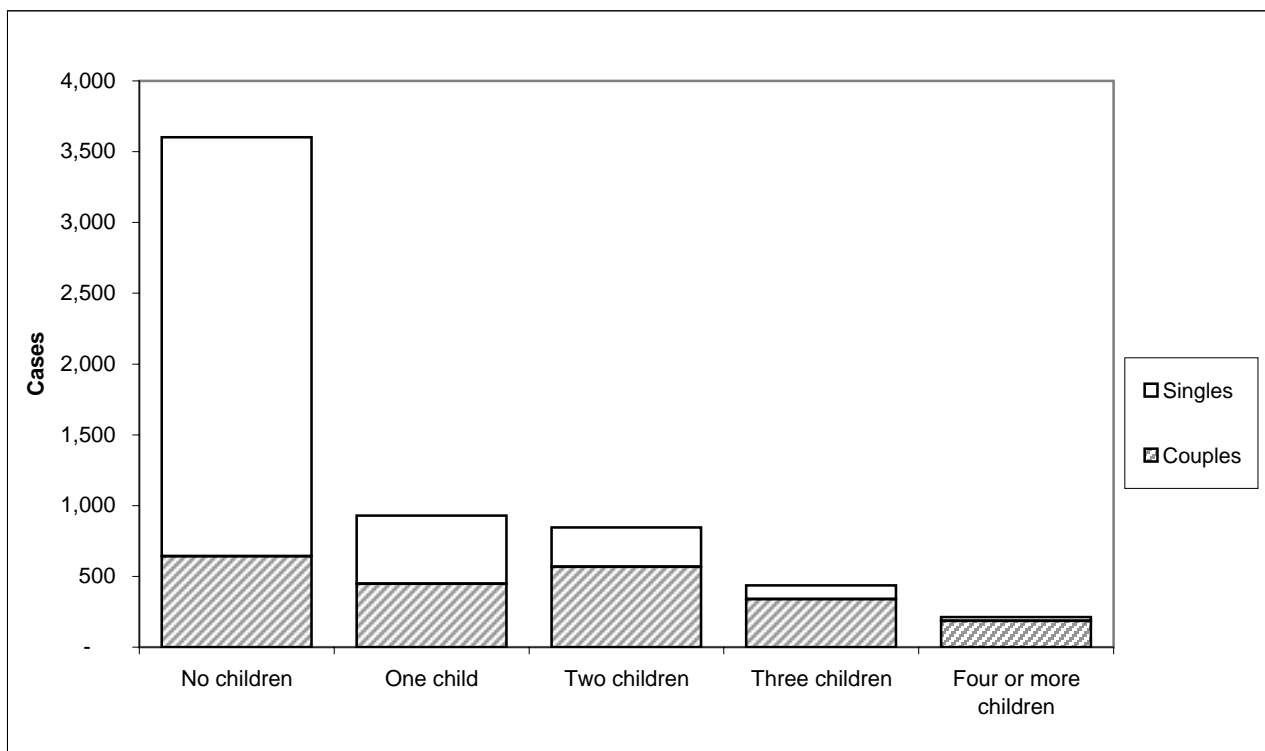
**Table 3.2 : Family size and type by weekly amount of award. (DPTC/DWA)***United Kingdom*

|                       | All cases | Weekly amount of award |                 |                 |                 |                 |                   |                  | Average award<br>£ per week |
|-----------------------|-----------|------------------------|-----------------|-----------------|-----------------|-----------------|-------------------|------------------|-----------------------------|
|                       |           | Under £20.00           | £20.00 - £39.99 | £40.00 - £59.99 | £60.00 - £79.99 | £80.00 - £99.99 | £100.00 - £119.99 | £120.00 and over |                             |
| <b>All cases</b>      | 20,992    | 1,784                  | 4,244           | 5,908           | 1,977           | 2,303           | 2,174             | 2,602            | 66.23                       |
| No children           | 12,183    | 1,554                  | 3,780           | 5,142           | 930             | 777             | -                 | -                | 42.60                       |
| One child             | 3,389     | 112                    | 221             | 393             | 523             | 796             | 1,204             | 140              | 83.61                       |
| Two children          | 3,260     | 95                     | 174             | 273             | 382             | 514             | 733               | 1,089            | 97.04                       |
| Three children        | 1,469     | 17                     | 56              | 83              | 114             | 174             | 183               | 842              | 116.51                      |
| Four or more children | 691       | 6                      | 13              | 17              | 28              | 42              | 54                | 531              | 145.44                      |
| <b>Couples</b>        | 7,733     | 404                    | 735             | 995             | 1,175           | 1,643           | 1,124             | 1,657            | 85.89                       |
| No children           | 2,175     | 202                    | 329             | 423             | 444             | 777             | -                 | -                | 60.40                       |
| One child             | 1,621     | 89                     | 180             | 256             | 281             | 304             | 465               | 46               | 75.43                       |
| Two children          | 2,181     | 91                     | 158             | 224             | 317             | 367             | 453               | 571              | 90.08                       |
| Three children        | 1,151     | 16                     | 55              | 76              | 105             | 155             | 156               | 588              | 111.20                      |
| Four or more children | 605       | 6                      | 13              | 16              | 28              | 40              | 50                | 452              | 142.27                      |
| <b>Singles</b>        | 13,259    | 1,380                  | 3,509           | 4,913           | 802             | 660             | 1,050             | 945              | 54.77                       |
| No children           | 10,008    | 1,352                  | 3,451           | 4,719           | 486             | -               | -                 | -                | 38.73                       |
| One child             | 1,768     | 23                     | 41              | 137             | 242             | 492             | 739               | 94               | 91.11                       |
| Two children          | 1,079     | -                      | 16              | 49              | 65              | 147             | 280               | 518              | 111.12                      |
| Three children        | 318       | -                      | -               | 7               | 9               | 19              | 27                | 254              | 135.72                      |
| Four or more children | 86        | -                      | -               | -               | -               | -               | -                 | 79               | 167.72                      |

**Chart 5 : Number of children by family type. (DPTC/DWA)**

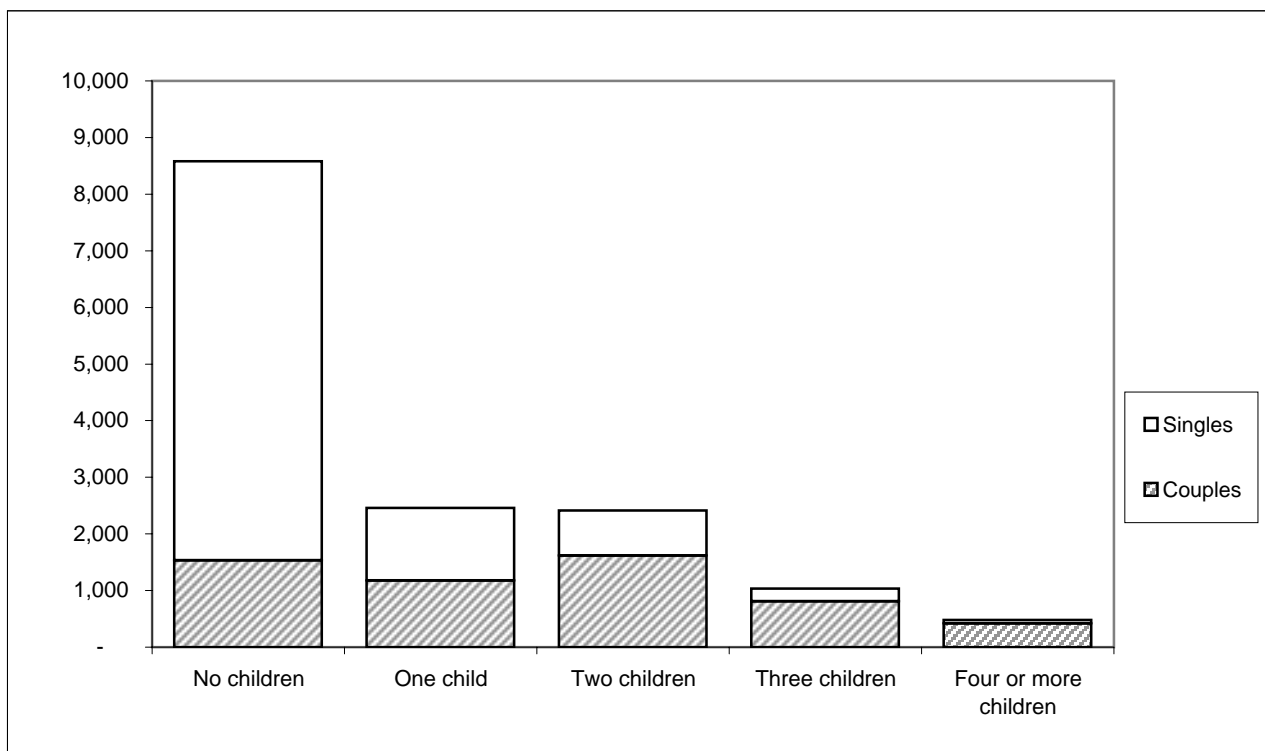
**Table 3.2A : Family size and type by weekly amount of award. (DWA)***United Kingdom*

|                       | All DWA cases | Weekly amount of award |                 |                 |                 |                 |                   |                  | Average award<br>£ per week |
|-----------------------|---------------|------------------------|-----------------|-----------------|-----------------|-----------------|-------------------|------------------|-----------------------------|
|                       |               | Under £20.00           | £20.00 - £39.99 | £40.00 - £59.99 | £60.00 - £79.99 | £80.00 - £99.99 | £100.00 - £119.99 | £120.00 and over |                             |
| <b>All DWA cases</b>  | 6,027         | 822                    | 1,289           | 1,489           | 605             | 737             | 583               | 502              | 59.93                       |
| No children           | 3,603         | 745                    | 1,142           | 1,215           | 260             | 241             | -                 | -                | 38.73                       |
| One child             | 930           | 43                     | 64              | 139             | 170             | 278             | 229               | 7                | 77.35                       |
| Two children          | 846           | 22                     | 53              | 92              | 116             | 139             | 278               | 146              | 90.85                       |
| Three children        | 436           | 8                      | 26              | 36              | 42              | 59              | 54                | 211              | 104.26                      |
| Four or more children | 212           | -                      | -               | 7               | 17              | 20              | 22                | 138              | 129.30                      |
| <b>Couples</b>        | 2,183         | 129                    | 234             | 302             | 329             | 498             | 327               | 364              | 81.24                       |
| No children           | 642           | 67                     | 111             | 116             | 107             | 241             | -                 | -                | 58.95                       |
| One child             | 448           | 31                     | 48              | 80              | 85              | 96              | 103               | 5                | 71.90                       |
| Two children          | 567           | 20                     | 46              | 66              | 86              | 91              | 163               | 95               | 87.27                       |
| Three children        | 340           | 7                      | 25              | 34              | 34              | 52              | 43                | 145              | 99.92                       |
| Four or more children | 186           | -                      | -               | 6               | 17              | 18              | 18                | 119              | 128.22                      |
| <b>Singles</b>        | 3,844         | 693                    | 1,055           | 1,187           | 276             | 239             | 256               | 138              | 47.82                       |
| No children           | 2,961         | 678                    | 1,031           | 1,099           | 153             | -               | -                 | -                | 34.34                       |
| One child             | 482           | 12                     | 16              | 59              | 85              | 182             | 126               | -                | 82.42                       |
| Two children          | 279           | -                      | 7               | 26              | 30              | 48              | 115               | 51               | 98.12                       |
| Three children        | 96            | -                      | -               | -               | 8               | 7               | 11                | 66               | 119.67                      |
| Four or more children | 26            | -                      | -               | -               | -               | -               | -                 | 19               | 137.05                      |

**Chart 5A : Number of children by family type. (DWA)**

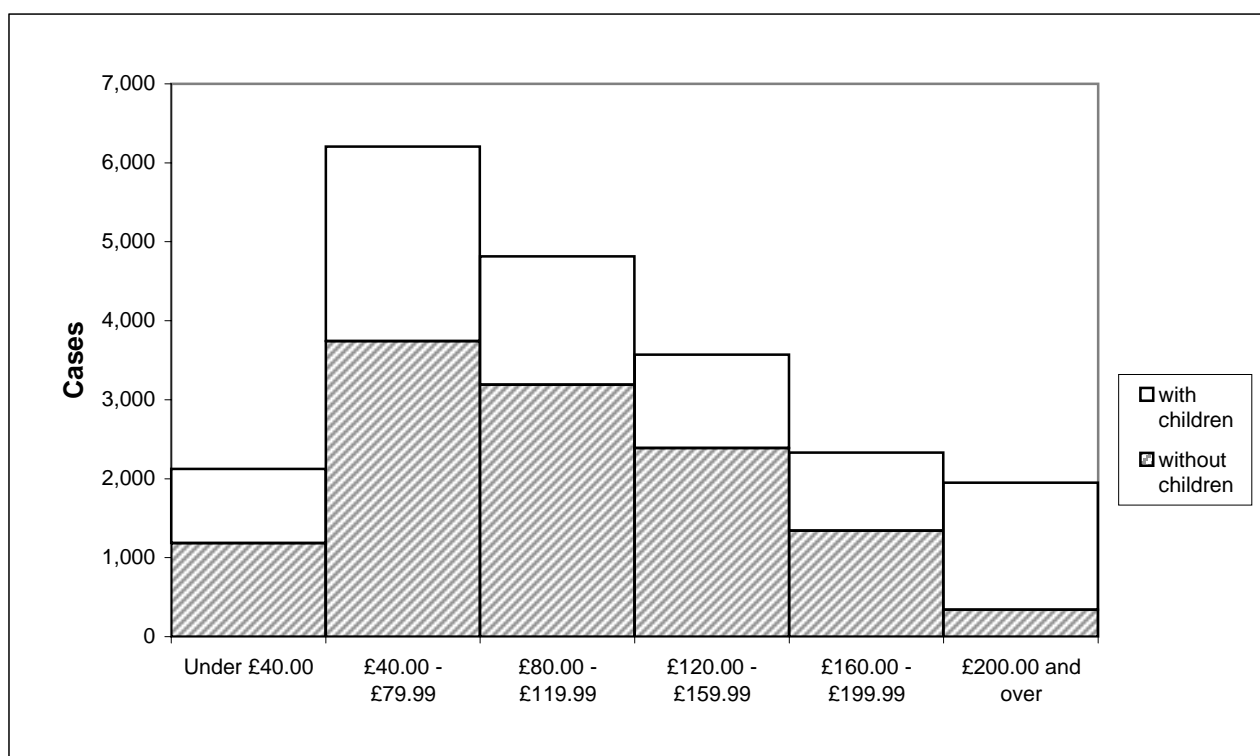
**Table 3.2B : Family size and type by weekly amount of award. (DPTC)***United Kingdom*

|                       | All DPTC cases | Weekly amount of award |                 |                 |                 |                 |                   |                  | Average award<br>£ per week |
|-----------------------|----------------|------------------------|-----------------|-----------------|-----------------|-----------------|-------------------|------------------|-----------------------------|
|                       |                | Under £20.00           | £20.00 - £39.99 | £40.00 - £59.99 | £60.00 - £79.99 | £80.00 - £99.99 | £100.00 - £119.99 | £120.00 and over |                             |
| <b>All DPTC cases</b> | 14,965         | 962                    | 2,955           | 4,419           | 1,372           | 1,566           | 1,591             | 2,100            | 68.77                       |
| No children           | 8,580          | 809                    | 2,638           | 3,927           | 670             | 536             | -                 | -                | 44.22                       |
| One child             | 2,459          | 69                     | 157             | 254             | 353             | 518             | 975               | 133              | 85.98                       |
| Two children          | 2,414          | 73                     | 121             | 181             | 266             | 375             | 455               | 943              | 99.21                       |
| Three children        | 1,033          | 9                      | 30              | 47              | 72              | 115             | 129               | 631              | 121.68                      |
| Four or more children | 479            | -                      | 9               | 10              | 11              | 22              | 32                | 393              | 152.58                      |
| <b>Couples</b>        | 5,550          | 275                    | 501             | 693             | 846             | 1,145           | 797               | 1,293            | 87.72                       |
| No children           | 1,533          | 135                    | 218             | 307             | 337             | 536             | -                 | -                | 61.01                       |
| One child             | 1,173          | 58                     | 132             | 176             | 196             | 208             | 362               | 41               | 76.78                       |
| Two children          | 1,614          | 71                     | 112             | 158             | 231             | 276             | 290               | 476              | 91.07                       |
| Three children        | 811            | 9                      | 30              | 42              | 71              | 103             | 113               | 443              | 115.93                      |
| Four or more children | 419            | -                      | 9               | 10              | 11              | 22              | 32                | 333              | 148.51                      |
| <b>Singles</b>        | 9,415          | 687                    | 2,454           | 3,726           | 526             | 421             | 794               | 807              | 57.60                       |
| No children           | 7,047          | 674                    | 2,420           | 3,620           | 333             | -               | -                 | -                | 40.57                       |
| One child             | 1,286          | 11                     | 25              | 78              | 157             | 310             | 613               | 92               | 94.37                       |
| Two children          | 800            | -                      | 9               | 23              | 35              | 99              | 165               | 467              | 115.65                      |
| Three children        | 222            | -                      | -               | 5               | -               | 12              | 16                | 188              | 142.67                      |
| Four or more children | 60             | -                      | -               | -               | -               | -               | -                 | 60               | 181.01                      |

**Chart 5B : Number of children by family type. (DPTC)**

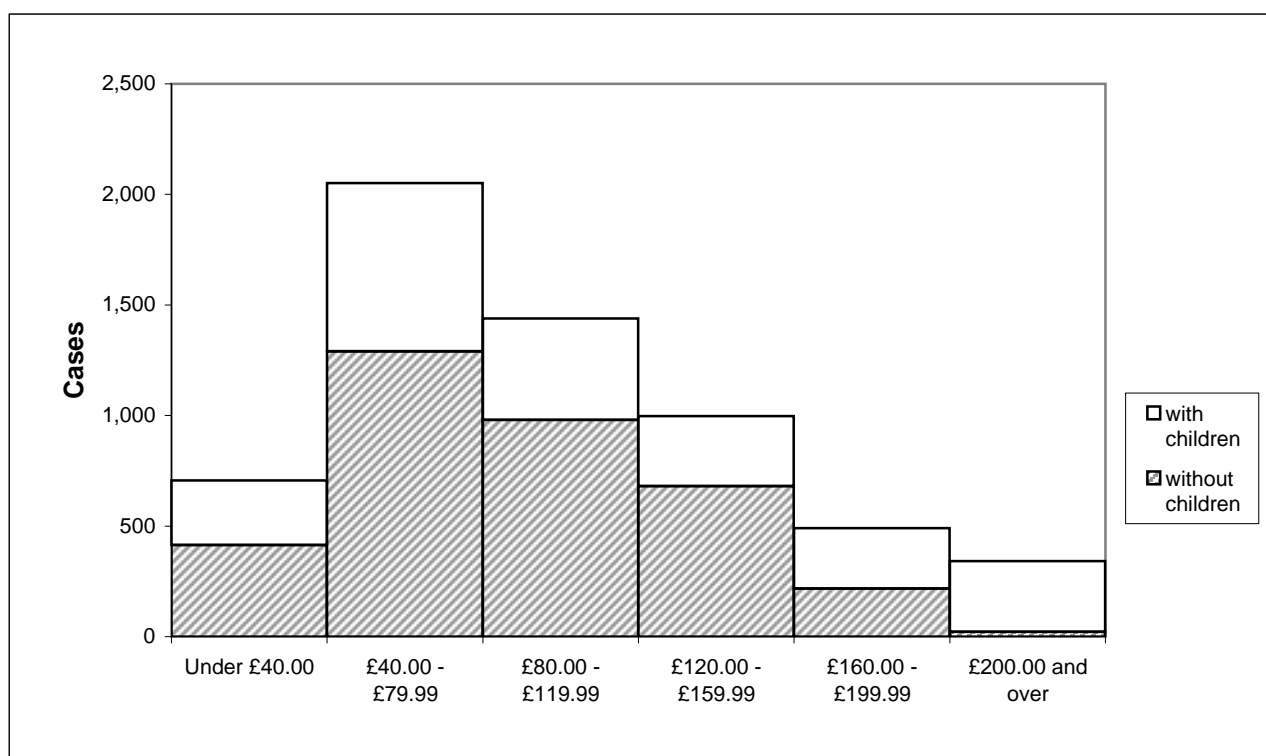
**Table 4.1 : Family type by gross weekly earnings of main earner. (DPTC/DWA)***United Kingdom*

|                         | All cases | Gross weekly earnings of main earner |                 |                  |                   |                   |                  | Average gross earnings £ per week |
|-------------------------|-----------|--------------------------------------|-----------------|------------------|-------------------|-------------------|------------------|-----------------------------------|
|                         |           | Under £40.00                         | £40.00 - £79.99 | £80.00 - £119.99 | £120.00 - £159.99 | £160.00 - £199.99 | £200.00 and over |                                   |
| <b>All cases</b>        | 20,992    | 2,125                                | 6,204           | 4,814            | 3,569             | 2,332             | 1,948            | 108.66                            |
| Couples                 | 7,733     | 1,147                                | 2,161           | 1,300            | 927               | 891               | 1,307            | 115.29                            |
| Singles                 | 13,259    | 978                                  | 4,043           | 3,514            | 2,642             | 1,441             | 641              | 104.79                            |
| <b>With children</b>    | 8,809     | 941                                  | 2,462           | 1,624            | 1,182             | 992               | 1,608            | 121.91                            |
| Couples                 | 5,558     | 710                                  | 1,488           | 845              | 656               | 678               | 1,181            | 125.06                            |
| Singles                 | 3,251     | 231                                  | 974             | 779              | 526               | 314               | 427              | 116.52                            |
| <b>Without children</b> | 12,183    | 1,184                                | 3,742           | 3,190            | 2,387             | 1,340             | 340              | 99.08                             |
| Couples                 | 2,175     | 437                                  | 673             | 455              | 271               | 213               | 126              | 90.32                             |
| Singles                 | 10,008    | 747                                  | 3,069           | 2,735            | 2,116             | 1,127             | 214              | 100.98                            |

**Chart 6 : Gross weekly earnings of main earner and family type. (DPTC/DWA)**

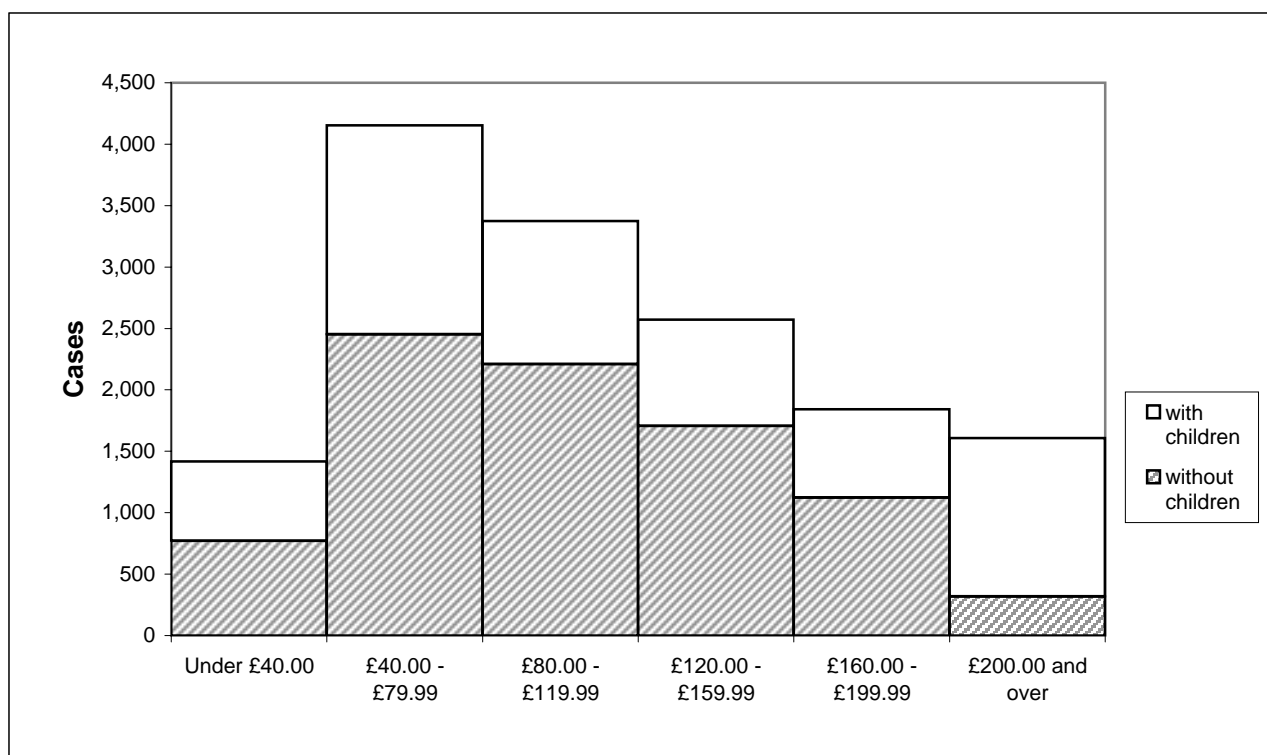
**Table 4.1A : Family type by gross weekly earnings of main earner. (DWA)***United Kingdom*

|                         | All DWA cases | Gross weekly earnings of main earner |                 |                  |                   |                   |                  | Average gross earnings £ per week |
|-------------------------|---------------|--------------------------------------|-----------------|------------------|-------------------|-------------------|------------------|-----------------------------------|
|                         |               | Under £40.00                         | £40.00 - £79.99 | £80.00 - £119.99 | £120.00 - £159.99 | £160.00 - £199.99 | £200.00 and over |                                   |
| <b>All DWA cases</b>    | 6,027         | 707                                  | 2,051           | 1,439            | 998               | 491               | 341              | 96.85                             |
| Couples                 | 2,183         | 380                                  | 691             | 378              | 245               | 233               | 256              | 100.76                            |
| Singles                 | 3,844         | 327                                  | 1,360           | 1,061            | 753               | 258               | 85               | 94.62                             |
| <b>With children</b>    | 2,424         | 293                                  | 761             | 459              | 318               | 274               | 319              | 109.46                            |
| Couples                 | 1,541         | 230                                  | 463             | 243              | 183               | 188               | 234              | 110.14                            |
| Singles                 | 883           | 63                                   | 298             | 216              | 135               | 86                | 85               | 108.26                            |
| <b>Without children</b> | 3,603         | 414                                  | 1,290           | 980              | 680               | 217               | 22               | 88.36                             |
| Couples                 | 642           | 150                                  | 228             | 135              | 62                | 45                | 22               | 78.25                             |
| Singles                 | 2,961         | 264                                  | 1,062           | 845              | 618               | 172               | -                | 90.55                             |

**Chart 6A : Gross weekly earnings of main earner and family type. (DWA)**

**Table 4.1B : Family type by gross weekly earnings of main earner. (DPTC)***United Kingdom*

|                         | All DPTC cases | Gross weekly earnings of main earner |                 |                  |                   |                   |                  | Average gross earnings £ per week |
|-------------------------|----------------|--------------------------------------|-----------------|------------------|-------------------|-------------------|------------------|-----------------------------------|
|                         |                | Under £40.00                         | £40.00 - £79.99 | £80.00 - £119.99 | £120.00 - £159.99 | £160.00 - £199.99 | £200.00 and over |                                   |
| <b>All DPTC cases</b>   | 14,965         | 1,418                                | 4,153           | 3,375            | 2,571             | 1,841             | 1,607            | 113.42                            |
| Couples                 | 5,550          | 767                                  | 1,470           | 922              | 682               | 658               | 1,051            | 121.00                            |
| Singles                 | 9,415          | 651                                  | 2,683           | 2,453            | 1,889             | 1,183             | 556              | 108.94                            |
| <b>With children</b>    | 6,385          | 648                                  | 1,701           | 1,165            | 864               | 718               | 1,289            | 126.63                            |
| Couples                 | 4,017          | 480                                  | 1,025           | 602              | 473               | 490               | 947              | 130.78                            |
| Singles                 | 2,368          | 168                                  | 676             | 563              | 391               | 228               | 342              | 119.59                            |
| <b>Without children</b> | 8,580          | 770                                  | 2,452           | 2,210            | 1,707             | 1,123             | 318              | 103.58                            |
| Couples                 | 1,533          | 287                                  | 445             | 320              | 209               | 168               | 104              | 95.38                             |
| Singles                 | 7,047          | 483                                  | 2,007           | 1,890            | 1,498             | 955               | 214              | 105.36                            |

**Chart 6B : Gross weekly earnings of main earner and family type. (DPTC)**

**Table 4.2 : Other benefits in receipt at the time of claim by family type. (DPTC/DWA)**

|  | <i>United Kingdom</i> |                |                |
|--|-----------------------|----------------|----------------|
|  | <b>All cases</b>      | <b>Couples</b> | <b>Singles</b> |
| <b>Total</b>   | 1,183                 | 928            | 255            |
| <b>Pensions:</b>   |                       |                |                |
| Retirement pension, war pension, war disablement pension   | 287                   | 163            | 124            |
| <b>Unemployment related benefits:</b>  |                       |                |                |
| Jobseeker's allowance <sup>1</sup>   | 30                    | 30             | -              |
| <b>Sickness and Disability benefits:</b>   |                       |                |                |
| Statutory sick pay, disability living allowance, industrial injuries disablement benefit and incapacity benefit <sup>2</sup> | 870                   | 739            | 131            |
| <b>Carer benefits:</b>   |                       |                |                |
| Invalid care allowance   | 817                   | 770            | 47             |
| <b>Others:</b>   | 9                     | 7              | -              |

## Notes :

1. Jobseeker's allowance replaced unemployment benefit in October 1996.
2. Incapacity benefit replaced invalidity and sickness benefit from 13 April 1995.

**Table 4.3 : Other income in receipt at the time of claim by family type. (DPTC/DWA)***United Kingdom*

|                         | <b>All cases</b> | <b>Couples</b> | <b>Singles</b> |
|-------------------------|------------------|----------------|----------------|
| <b>All cases</b>        | 1,031            | 502            | 529            |
| Maintenance (DWA only)  | 307              | 49             | 258            |
| Benefits in kind        | 38               | 18             | 20             |
| Rent and others         | 695              | 438            | 257            |
| <b>With children</b>    | 621              | 299            | 322            |
| Maintenance (DWA only)  | 290              | 46             | 244            |
| Benefits in kind        | 14               | 9              | 5              |
| Rent and others         | 325              | 246            | 79             |
| <b>Without children</b> | 410              | 203            | 207            |
| Maintenance (DWA only)  | 17               | -              | 14             |
| Benefits in kind        | 24               | 9              | 15             |
| Rent and others         | 370              | 192            | 178            |

**Table 5.1 : Number of awards by Government Office Region and family type.  
(DPTC/DWA)**

|                             | All cases |       |        | Couples |       |       | Singles |       |       |
|-----------------------------|-----------|-------|--------|---------|-------|-------|---------|-------|-------|
|                             | Total     | DWA   | DPTC   | Total   | DWA   | DPTC  | Total   | DWA   | DPTC  |
| <b>United Kingdom</b>       | 20,992    | 6,027 | 14,965 | 7,733   | 2,183 | 5,550 | 13,259  | 3,844 | 9,415 |
| <b>Great Britain</b>        | 19,649    | 5,620 | 14,029 | 7,221   | 2,033 | 5,188 | 12,428  | 3,587 | 8,841 |
| North East                  | 1,229     | 349   | 880    | 482     | 125   | 357   | 747     | 224   | 523   |
| North West                  | 3,163     | 919   | 2,244  | 1,192   | 332   | 860   | 1,971   | 587   | 1,384 |
| Yorkshire and<br>Humberside | 2,070     | 598   | 1,472  | 855     | 233   | 622   | 1,215   | 365   | 850   |
| East Midlands               | 1,465     | 416   | 1,049  | 611     | 176   | 435   | 854     | 240   | 614   |
| West Midlands               | 2,071     | 597   | 1,474  | 768     | 210   | 558   | 1,303   | 387   | 916   |
| Eastern                     | 1,258     | 357   | 901    | 440     | 126   | 314   | 818     | 231   | 587   |
| London                      | 1,136     | 310   | 826    | 314     | 86    | 228   | 822     | 224   | 598   |
| South East                  | 1,784     | 483   | 1,301  | 570     | 153   | 417   | 1,214   | 330   | 884   |
| South West                  | 1,831     | 536   | 1,295  | 698     | 203   | 495   | 1,133   | 333   | 800   |
| Wales                       | 1,736     | 519   | 1,217  | 704     | 219   | 485   | 1,032   | 300   | 732   |
| Scotland                    | 1,906     | 536   | 1,370  | 587     | 170   | 417   | 1,319   | 366   | 953   |
| Northern Ireland            | 1,343     | 407   | 936    | 512     | 150   | 362   | 831     | 257   | 574   |

**Table 5.2 : Average award by Government Office Region and family type.  
(DPTC/DWA)**

|                             | All cases |       |       | Couples |       |        | Singles |       |       |
|-----------------------------|-----------|-------|-------|---------|-------|--------|---------|-------|-------|
|                             | Total     | DWA   | DPTC  | Total   | DWA   | DPTC   | Total   | DWA   | DPTC  |
| <b>United Kingdom</b>       | 66.23     | 59.93 | 68.77 | 85.89   | 81.24 | 87.72  | 54.77   | 47.82 | 57.60 |
| <b>Great Britain</b>        | 65.71     | 59.64 | 68.14 | 85.08   | 81.01 | 86.68  | 54.45   | 47.52 | 57.26 |
| North East                  | 66.50     | 57.82 | 69.94 | 84.01   | 73.95 | 87.53  | 55.20   | 48.83 | 57.93 |
| North West                  | 68.45     | 61.34 | 71.36 | 86.41   | 81.44 | 88.33  | 57.59   | 49.97 | 60.82 |
| Yorkshire and<br>Humberside | 69.18     | 62.31 | 71.96 | 88.48   | 83.00 | 90.54  | 55.59   | 49.11 | 58.37 |
| East Midlands               | 67.64     | 62.94 | 69.51 | 86.45   | 81.60 | 88.41  | 54.18   | 49.25 | 56.11 |
| West Midlands               | 65.32     | 59.44 | 67.70 | 84.43   | 84.14 | 84.54  | 54.06   | 46.04 | 57.44 |
| Eastern                     | 61.97     | 56.37 | 64.19 | 83.79   | 83.47 | 83.92  | 50.23   | 41.59 | 53.63 |
| London                      | 60.70     | 53.04 | 63.58 | 86.05   | 80.65 | 88.08  | 51.02   | 42.44 | 54.23 |
| South East                  | 60.34     | 52.92 | 63.10 | 83.59   | 77.42 | 85.86  | 49.43   | 41.56 | 52.37 |
| South West                  | 63.36     | 58.29 | 65.45 | 82.27   | 79.46 | 83.42  | 51.70   | 45.38 | 54.33 |
| Wales                       | 70.54     | 66.09 | 72.43 | 87.02   | 82.47 | 89.07  | 59.29   | 54.12 | 61.41 |
| Scotland                    | 64.14     | 59.73 | 65.87 | 80.67   | 79.78 | 81.04  | 56.78   | 50.41 | 59.23 |
| Northern Ireland            | 73.90     | 63.95 | 78.23 | 97.25   | 84.36 | 102.60 | 59.52   | 52.04 | 62.87 |

*£ per week*

**Table 5.3 : Number of awards by Government Office Region and employment status (DPTC/DWA)**

|                             | All cases |       |        | Self-employed |       |       | Employed |       |        |
|-----------------------------|-----------|-------|--------|---------------|-------|-------|----------|-------|--------|
|                             | Total     | DWA   | DPTC   | Total         | DWA   | DPTC  | Total    | DWA   | DPTC   |
| <b>United Kingdom</b>       | 20,992    | 6,027 | 14,965 | 3,575         | 1,106 | 2,469 | 17,417   | 4,921 | 12,496 |
| <b>Great Britain</b>        | 19,649    | 5,620 | 14,029 | 3,343         | 1,037 | 2,306 | 16,306   | 4,583 | 11,723 |
| North East                  | 1,229     | 349   | 880    | 231           | 70    | 161   | 998      | 279   | 719    |
| North West                  | 3,163     | 919   | 2,244  | 562           | 192   | 370   | 2,601    | 727   | 1,874  |
| Yorkshire and<br>Humberside | 2,070     | 598   | 1,472  | 357           | 117   | 240   | 1,713    | 481   | 1,232  |
| East Midlands               | 1,465     | 416   | 1,049  | 249           | 79    | 170   | 1,216    | 337   | 879    |
| West Midlands               | 2,071     | 597   | 1,474  | 314           | 90    | 224   | 1,757    | 507   | 1,250  |
| Eastern                     | 1,258     | 357   | 901    | 224           | 66    | 158   | 1,034    | 291   | 743    |
| London                      | 1,136     | 310   | 826    | 167           | 50    | 117   | 969      | 260   | 709    |
| South East                  | 1,784     | 483   | 1,301  | 283           | 79    | 204   | 1,501    | 404   | 1,097  |
| South West                  | 1,831     | 536   | 1,295  | 395           | 119   | 276   | 1,436    | 417   | 1,019  |
| Wales                       | 1,736     | 519   | 1,217  | 325           | 102   | 223   | 1,411    | 417   | 994    |
| Scotland                    | 1,906     | 536   | 1,370  | 236           | 73    | 163   | 1,670    | 463   | 1,207  |
| Northern Ireland            | 1,343     | 407   | 936    | 232           | 69    | 163   | 1,111    | 338   | 773    |

**Table 5.4 : Average award by Government Office Region and employment status (DPTC/DWA)**

|                             | All cases |       |       | Self-employed |       |        | Employed |       |       |
|-----------------------------|-----------|-------|-------|---------------|-------|--------|----------|-------|-------|
|                             | Total     | DWA   | DPTC  | Total         | DWA   | DPTC   | Total    | DWA   | DPTC  |
| <b>United Kingdom</b>       | 66.23     | 59.93 | 68.77 | 88.26         | 81.83 | 91.14  | 61.71    | 55.01 | 64.35 |
| <b>Great Britain</b>        | 65.71     | 59.64 | 68.14 | 87.26         | 81.63 | 89.80  | 61.29    | 54.66 | 63.88 |
| North East                  | 66.50     | 57.82 | 69.94 | 85.02         | 74.90 | 89.42  | 62.21    | 53.54 | 65.58 |
| North West                  | 68.45     | 61.34 | 71.36 | 87.26         | 77.90 | 92.12  | 64.39    | 56.96 | 67.27 |
| Yorkshire and<br>Humberside | 69.18     | 62.31 | 71.96 | 93.21         | 85.97 | 96.75  | 64.17    | 56.56 | 67.14 |
| East Midlands               | 67.64     | 62.94 | 69.51 | 87.88         | 84.20 | 89.59  | 63.50    | 57.96 | 65.62 |
| West Midlands               | 65.32     | 59.44 | 67.70 | 89.81         | 84.48 | 91.96  | 60.94    | 55.00 | 63.35 |
| Eastern                     | 61.97     | 56.37 | 64.19 | 90.49         | 88.43 | 91.36  | 55.79    | 49.10 | 58.41 |
| London                      | 60.70     | 53.04 | 63.58 | 81.14         | 75.27 | 83.65  | 57.18    | 48.77 | 60.27 |
| South East                  | 60.34     | 52.92 | 63.10 | 82.69         | 73.33 | 86.31  | 56.13    | 48.93 | 58.79 |
| South West                  | 63.36     | 58.29 | 65.45 | 86.68         | 84.64 | 87.56  | 56.94    | 50.77 | 59.46 |
| Wales                       | 70.54     | 66.09 | 72.43 | 84.78         | 82.95 | 85.61  | 67.26    | 61.96 | 69.48 |
| Scotland                    | 64.14     | 59.73 | 65.87 | 87.60         | 85.08 | 88.73  | 60.82    | 55.73 | 62.78 |
| Northern Ireland            | 73.90     | 63.95 | 78.23 | 102.59        | 84.81 | 110.12 | 67.92    | 59.69 | 71.51 |

*£ per week*

**Table 6.1 : Type and main qualifying benefit of all DPTC awards starting between October 1999 and January 2000.**

|  | <i>United Kingdom</i> |                                     |
|--|-----------------------|-------------------------------------|
|  | All cases             | Average DPTC<br>award<br>£ per week |
| <b>All awards</b>  |                       |                                     |
| <b>All qualifying benefits</b>                                 | 14,965                | 68.77                               |
| Disability living allowance - higher rate & analogous benefits | 6,687                 | 66.38                               |
| Disability living allowance - lower rate                       | 3,189                 | 60.43                               |
| Severe disablement benefit                                     | 1,038                 | 59.84                               |
| Disability premium in IS/JSA/HB/CTB                            | 1,900                 | 85.18                               |
| Incapacity benefit (higher rate short term)                    | 421                   | 75.14                               |
| Incapacity benefit (long term)                                 | 1,730                 | 79.16                               |
| <b>New awards <sup>1</sup></b>                                 |                       |                                     |
| <b>All qualifying benefits</b>                                 | 4,626                 | 64.44                               |
| Disability living allowance - higher rate & analogous benefits | 1,972                 | 58.18                               |
| Disability living allowance - lower rate                       | 957                   | 58.48                               |
| Severe disablement benefit                                     | 330                   | 60.86                               |
| Disability premium in IS/JSA/HB/CTB                            | 629                   | 84.44                               |
| Incapacity benefit (higher rate short term)                    | 158                   | 72.28                               |
| Incapacity benefit (long term)                                 | 580                   | 73.80                               |
| <b>Renewal awards <sup>2</sup></b>                             |                       |                                     |
| <b>All qualifying benefits</b>                                 | 9,156                 | 71.74                               |
| Disability living allowance - higher rate & analogous benefits | 4,082                 | 71.01                               |
| Disability living allowance - lower rate                       | 1,959                 | 62.06                               |
| Severe disablement benefit                                     | 649                   | 59.67                               |
| Disability premium in IS/JSA/HB/CTB                            | 1,175                 | 86.12                               |
| Incapacity benefit (higher rate short term)                    | 240                   | 78.59                               |
| Incapacity benefit (long term)                                 | 1,051                 | 82.46                               |
| <b>Repeat awards <sup>3</sup></b>                              |                       |                                     |
| <b>All qualifying benefits</b>                                 | 1,183                 | 62.66                               |
| Disability living allowance - higher rate & analogous benefits | 633                   | 62.12                               |
| Disability living allowance - lower rate                       | 273                   | 55.51                               |
| Severe disablement benefit                                     | 59                    | 56.00                               |
| Disability premium in IS/JSA/HB/CTB                            | 96                    | 78.41                               |
| Incapacity benefit (higher rate short term)                    | 23                    | 58.77                               |
| Incapacity benefit (long term)                                 | 99                    | 75.46                               |

## Notes :

1. New awards are made to people who have never received DWA or DPTC before.
2. Renewal awards are those following on immediately from a previous award without a break.
3. Repeat awards are those where there has been a previous award but there has been a break between claims.
4. Figures for DWA awards in Great Britain starting between November 1992 and August 1999 appear in the enquiry statistics for October 1999.

(NB if the previous award ended more than 2 years earlier then the claim will be treated as 'NEW'.)

**Table 6.2 : DPTC awards starting between October 1999 and January 2000 by type of award and family type.**

*United Kingdom*

|                                    | All Cases | Couples |        | Singles |        |
|------------------------------------|-----------|---------|--------|---------|--------|
|                                    |           | Male    | Female | Male    | Female |
| <b>All awards</b>                  | 14,965    | 4,573   | 977    | 4,144   | 5,271  |
| Self employed                      | 2,469     | 1,345   | 206    | 532     | 386    |
| Employees                          | 12,496    | 3,228   | 771    | 3,612   | 4,885  |
| <b>New awards <sup>1</sup></b>     | 4,626     | 1,356   | 378    | 1,207   | 1,685  |
| Self employed                      | 513       | 267     | 53     | 110     | 83     |
| Employees                          | 4,113     | 1,089   | 325    | 1,097   | 1,602  |
| <b>Renewal awards <sup>2</sup></b> | 9,156     | 2,909   | 503    | 2,587   | 3,157  |
| Self employed                      | 1,800     | 1,009   | 134    | 386     | 271    |
| Employees                          | 7,356     | 1,900   | 369    | 2,201   | 2,886  |
| <b>Repeat awards <sup>3</sup></b>  | 1,183     | 308     | 96     | 350     | 429    |
| Self employed                      | 156       | 69      | 19     | 36      | 32     |
| Employees                          | 1,027     | 239     | 77     | 314     | 397    |

## Notes :

1. New awards are made to people who have never received DWA or DPTC before.
2. Renewal awards are those following on immediately from a previous award without a break.
3. Repeat awards are those where there has been a previous award but there has been a break between claims.
4. Figures for DWA awards in Great Britain starting between November 1992 and August 1999 appear in the enquiry statistics for October 1999.

(NB if the previous award ended more than 2 years earlier then the claim will be treated as 'NEW'.)

**Table 6.3 : DPTC disallowances between October 1999 and January 2000 by reason of disallowance.***United Kingdom*

|   | <b>Number of disallowances</b> |
|---|--------------------------------|
| <b>All disallowances</b>  | 3,011                          |
| <b>All A codes</b>  | 11                             |
| A1 Claimant was not in UK   | 10                             |
| A2 Claimant was not normally living in UK   | -                              |
| A3 Partner not normally living in UK  | -                              |
| A4 All claimants earnings from outside UK   | -                              |
| <b>All C codes</b>  | 27                             |
| C1 Claimant's capital exceeds £16,000   | 21                             |
| C2 Claimant and partner's capital exceeds £16,000   | 6                              |
| C3 Failure to provide information about value of claimant and partner's capital   | -                              |
| C4 Failure to provide information about value of claimant's capital   | -                              |
| <b>All D codes</b>  | 583                            |
| D1 Claimant not doing paid work for an average of 16 hours a week or more   | 221                            |
| D2 Claimant not in paid work  | 203                            |
| D5 Claimant not engaged in remunerative work in relevant weeks  | 104                            |
| D7 Claimant not normally engaged in paid work   | 51                             |
| D9 Claimant not treated as in paid work - voluntary   | -                              |
| D11 Claimant not treated as in paid work - charity  | -                              |
| D13 Claimant working for voluntary body - expenses  | -                              |
| D15 Claimant could not be treated as in paid work on the information available  | -                              |
| <b>All E codes</b>  | 639                            |
| E1 Claimant's income higher than the level at which DPTC would become payable   | 543                            |
| E2 Claimant's entitlement less than the minimum amount of DPTC  | 18                             |
| E3 On the information available the claimant or partner's income was higher then the level at which DPTC would become payable | 78                             |
| <b>All other codes</b>  | 1,751                          |
| G1 Any disallowance not covered by other categories   | 70                             |
| I DPTC claim made more than 6 weeks before DPTC end date  | 397                            |
| J1 Qualifying benefit test not satisfied  | 959                            |
| K1 Disability test not satisfied  | 151                            |
| L Lapsed claim  | 7                              |
| W Claimant has withdrawn claim  | 167                            |

## Notes :

1. Figures for DWA disallowances in Great Britain occurring between November 1992 and August 1999 appear in the enquiry statistics for October 1999.

**Table 6.4 : Renewal and repeat DPTC awards starting between October 1999 and January 2000 by disability type and age of claimant.***United Kingdom*

|  | All ages | Under 20 | 20 - 29 | 30 - 39 | 40 - 49 | 50 - 59 | 60 and over |
|--|----------|----------|---------|---------|---------|---------|-------------|
| <b>Renewal awards <sup>1</sup></b>           |          |          |         |         |         |         |             |
| Mental disabilities - treatment              | 631      | -        | 81      | 234     | 207     | 100     | 8           |
| Mental disabilities - day to day things      | 879      | 9        | 299     | 279     | 199     | 85      | 8           |
| Mental disabilities - getting on with people | 739      | 5        | 183     | 282     | 184     | 81      | -           |
| Fits and comas                               | 68       | -        | 14      | 26      | 18      | 8       | -           |
| Exhaustion and pain                          | 2,576    | 6        | 279     | 767     | 854     | 578     | 92          |
| Seeing                                       | 256      | -        | 65      | 87      | 64      | 33      | 5           |
| Hearing                                      | 143      | -        | 24      | 53      | 42      | 22      | -           |
| Communicating                                | 266      | -        | 75      | 83      | 68      | 36      | -           |
| Getting around                               | 380      | -        | 41      | 109     | 127     | 84      | 19          |
| Using your hands                             | 393      | 6        | 91      | 134     | 90      | 65      | 7           |
| Reaching with your arms                      | 46       | -        | -       | 15      | 12      | 13      | -           |
| <b>Repeat awards <sup>2</sup></b>            |          |          |         |         |         |         |             |
| Mental disabilities - treatment              | 88       | -        | 16      | 40      | 24      | 8       | -           |
| Mental disabilities - day to day things      | 83       | -        | 31      | 26      | 15      | 9       | -           |
| Mental disabilities - getting on with people | 91       | -        | 19      | 34      | 26      | 10      | -           |
| Fits and comas                               | 8        | -        | 5       | -       | -       | -       | -           |
| Exhaustion and pain                          | 256      | -        | 37      | 87      | 90      | 39      | -           |
| Seeing                                       | 46       | -        | 16      | 14      | 12      | -       | -           |
| Hearing                                      | 20       | -        | 6       | 7       | -       | -       | -           |
| Communicating                                | 34       | -        | 16      | 9       | -       | -       | -           |
| Getting around                               | 41       | -        | 8       | 11      | 9       | 13      | -           |
| Using your hands                             | 62       | -        | 20      | 26      | 11      | -       | -           |
| Reaching with your arms                      | 14       | -        | 7       | -       | -       | -       | -           |

## Notes :

1. Renewal awards are those following on immediately from a previous award without a break.
2. Repeat awards are those where there has been a previous award but there has been a break
3. Claimants may have one or more type(s) of disability. This table records all declared and confirmed disability types for those claimants who complete form DWA2 prior to renewal/ repeat awards.
4. Figures for DWA awards in Great Britain starting between November 1992 and August 1999 appear in the enquiry statistics for October 1999.

**£5.00**