

---

# **Disabled Person's Tax Credit Statistics**

## **Quarterly Enquiry**

### **United Kingdom April 2002**

---

Contact point for enquiries and requests for further copies:-

Analysis and Research (TCASP)  
Inland Revenue  
Room 54 - New Wing  
Somerset House  
London  
WC2R 1LB  
☎ : 020 - 7438 6275  
Fax : 020 - 7438 4329  
E-mail : ar\_tcasp.ir.sh@gtnet.gov.uk

This, and issues back to October 1999 can be found on the Inland Revenue web site : [www.inlandrevenue.gov.uk](http://www.inlandrevenue.gov.uk) / statistics

The July 2002 issue is due to be published on the web site on Tuesday 10th December 2002

#### A NATIONAL STATISTICS PUBLICATION

National Statistics are produced to high professional standards set out in the National Statistics Code of Practice. They undergo regular quality assurance reviews to ensure that they meet customer needs. They are produced free from any political interference.

For general enquiries about National Statistics, contact the National Statistics Public Enquiry Service on

☎ : 020 - 7533 5888  
minicom : 01633 812399  
E-mail : info@statistics.gov.uk  
Fax : 01633 652747  
Letters : room DG/18, 1 Drummond Gate, LONDON, SW1V 2QQ

You can also find National Statistics on the internet - go to [www.statistics.gov.uk](http://www.statistics.gov.uk)

**Disabled Person's Tax Credit Statistics**  
**Quarterly Enquiry**  
**United Kingdom**  
**April 2002**

<b>Contents</b>	<b>PAGE</b>
Introduction .....	1
Main findings .....	1
List of tables .....	2
Section 1 : Time series .....	4
Section 2 : Family type .....	7
Section 3 : Amount of award .....	10
Section 4 : Earnings and other income .....	12
Section 5 : Regional analysis .....	14
Section 6 : Historical DPTC .....	16
Rates and thresholds, 1999-00 to 2002-03 .....	20

## Introduction

Disabled Person's' Tax Credit (DPTC) is a tax credit available to adults who are in remunerative work for at least 16 hours per week, and who have an illness or disability which puts them at a disadvantage in getting a job.

Awards of DPTC cover 26 weeks. These tables cover recipients at 30 April 2002 (that is, with awards with start and end dates spanning this date).

DPTC replaced Disability Working Allowance (DWA) from 5 October 1999. Time series of the number of recipients of DPTC and DWA are also shown, but for dates before October 1999 figures are available only for cases dealt with by the Great Britain tax credit office (that is, excluding cases dealt with by the Northern Ireland office).

The figures in the tables are based on a 100% scan of awards. The scan was taken three months after the reference date, by which time almost all awards current at the reference date were processed and entered onto the computer system. To ensure that information about individuals is not disclosed, most cells containing less than five cases are shown as '-', and some other cells are bracketed together.

Section 5 shows the number of recipients in each country, and in each region of England. The numbers in each local authority and parliamentary constituency in each quarter appear in "Working Families' and Disabled Person's Tax Credit Statistics: Geographical analyses", although for a different cycle of months; the May 2002 issue is due to be published on 8th October 2002.

## Main Findings

There were 34,330 recipients of DPTC at 30 April 2002, 5 per cent higher than at 31 January 2002.

22,036 of the recipients were single adults (including lone parents), who had an average award of £66.44 per week. 12,294 were in couples; they had an average award of £94.66 per week.

The overall average award was £76.55 per week.

46 per cent of recipients had children. Their average weekly award was £112.98, compared with £45.30 for recipients with no children.

For 42 per cent of recipients, higher rate Disability living allowance, or an analogous benefit, was the main qualifying benefit. Lower rate Disability living allowance was the main qualifying benefit for a further 21 per cent.

For recipients with children, 63% of awards were over £100 per week.

The average gross weekly earnings of the recipients was £136.

## List of Tables

### Section 1 : Time series

Table 1.1	DWA/DPTC recipients by family type, January 1993 - April 2002.
Chart 1	DWA/DPTC recipients by family type, GB office, Jan 1993 - Apr 2002.
Table 1.2	Average DWA/DPTC award by family type of recipients, January 1993 - April 2002.
Chart 2	Average DWA/DPTC award by family type of recipients, GB office, January 1993 - April 2002.

### Section 2 : Family type

Table 2.1	Age and gender of recipients, and whether with children.
Chart 3	Recipients by age, and whether with children.
Table 2.2	Gender and family type of recipients, and average weekly award.
Chart 4	Family type and gender of recipients.
Table 2.3	Main qualifying benefit of recipients, by whether with children, and average weekly award.

### Section 3 : Amount of award

Table 3.1	Family type and gender of recipients, by weekly amount of award.
Table 3.2	Family size and type of recipients, by weekly amount of award.
Chart 5	Recipients by number of children in family, and by family type.

**Section 4 : Earnings and other income**

- Table 4.1      Gross weekly earnings of recipients, by family type.
- Chart 6        Recipients by gross weekly earnings, and by whether with children.
- Table 4.2      Recipients whose family incomes include social security benefits which are brought to account, by family type.
- Table 4.3      Recipients whose families receive other income which is brought to account, by family type.

**Section 5 : Regional analysis**

- Table 5.1      Recipients in each Government Office Region, by employment status and family type.
- Table 5.2      Average weekly award for recipients in each Government Office Region, by employment status and family type.

**Section 6 : Historical DPTC**

- Table 6.1      Main qualifying benefit of recipients of awards starting between October 1999 and April 2002, by type of award.
- Table 6.2 :     Recipients of awards starting between October 1999 and April 2002 by type of award and family type.
- Table 6.3 :     Disallowances between October 1999 and April 2002 by reason of disallowance.
- Table 6.4 :     Recipients of renewal and repeat awards starting between October 1999 and April 2002 by disability type and age.

## **Section 1 : Time series**

This section shows back quarterly series for the number of recipients of Disability Working Allowance and Disabled Person's Tax Credit, and their average awards.

For October 1999 and January 2000 the recipients are a mixture of Disability Working Allowance and Disabled Person's Tax Credit recipients. Disability Working Allowance recipients are those with awards starting up to 30 September 1999 and still current at the reference date.

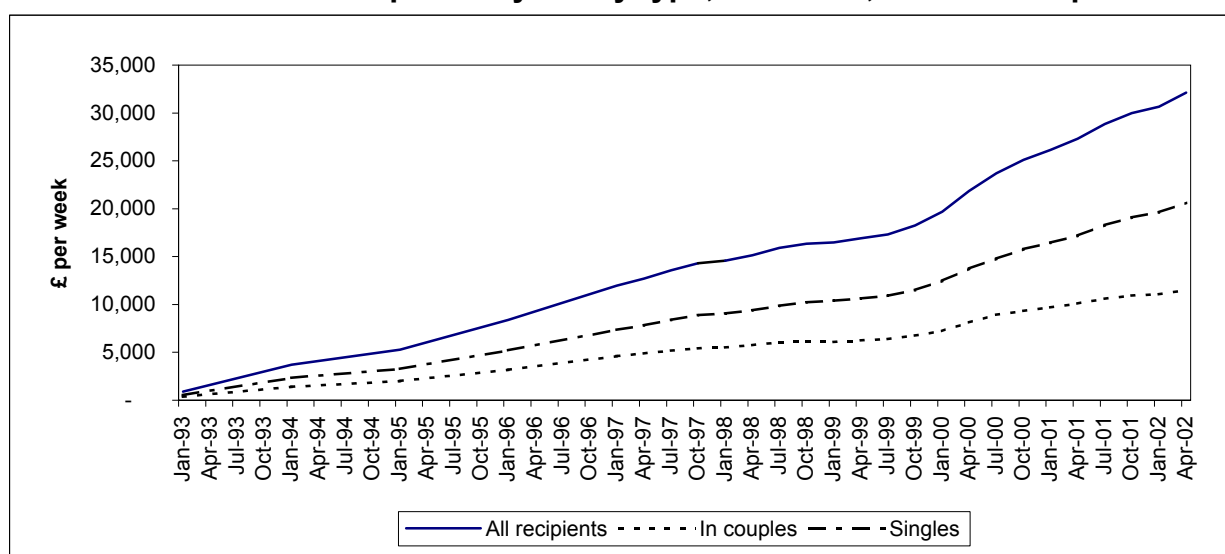
From April 2000, all the awards are of Disabled Person's Tax Credit.

The figures for January 2002 are slightly different to those published last time, as they take account of later information, including on awards made after the scan for the previous publication and then backdated, and changes to termination dates.

**Table 1.1 : DWA/DPTC recipients by family type, January 1993 - April 2002.***United Kingdom*

	All recipients		In couples		Singles	
	GB office <sup>1</sup>	Total	GB office <sup>1</sup>	Total	GB office <sup>1</sup>	Total
Jan-93	904	-	361	-	543	-
Jan-94	3,722	-	1,392	-	2,330	-
Jan-95	5,277	-	1,990	-	3,287	-
Jan-96	8,406	-	3,186	-	5,220	-
Jan-97	11,979	-	4,620	-	7,359	-
Apr-97	12,689	-	4,881	-	7,808	-
Jul-97	13,575	-	5,191	-	8,384	-
Oct-97	14,306	-	5,405	-	8,901	-
Jan-98	14,564	-	5,500	-	9,064	-
Apr-98	15,145	-	5,753	-	9,392	-
Jul-98	15,910	-	6,040	-	9,870	-
Oct-98	16,353	-	6,125	-	10,228	-
Jan-99	16,483	-	6,093	-	10,390	-
Apr-99	16,904	-	6,263	-	10,641	-
Jul-99	17,305	-	6,400	-	10,905	-
Oct-99	18,236	19,445	6,742	7,207	11,494	12,238
Jan-00	19,684	21,017	7,227	7,740	12,457	13,277
Apr-00	21,848	23,373	8,120	8,725	13,728	14,648
Jul-00	23,714	25,355	8,932	9,574	14,782	15,781
Oct-00	25,094	26,830	9,329	9,992	15,765	16,838
Jan-01	26,132	27,954	9,689	10,368	16,443	17,586
Apr-01	27,296	29,225	10,112	10,827	17,184	18,398
Jul-01	28,857	30,904	10,587	11,335	18,270	19,569
Oct-01	29,999	32,112	10,919	11,689	19,080	20,423
Jan-02	30,665	32,815	11,053	11,840	19,612	20,975
Apr-02	32,112	34,330	11,485	12,294	20,627	22,036

<sup>1</sup> Cases dealt with by the Northern Ireland tax credit office are excluded from the "GB office" series.

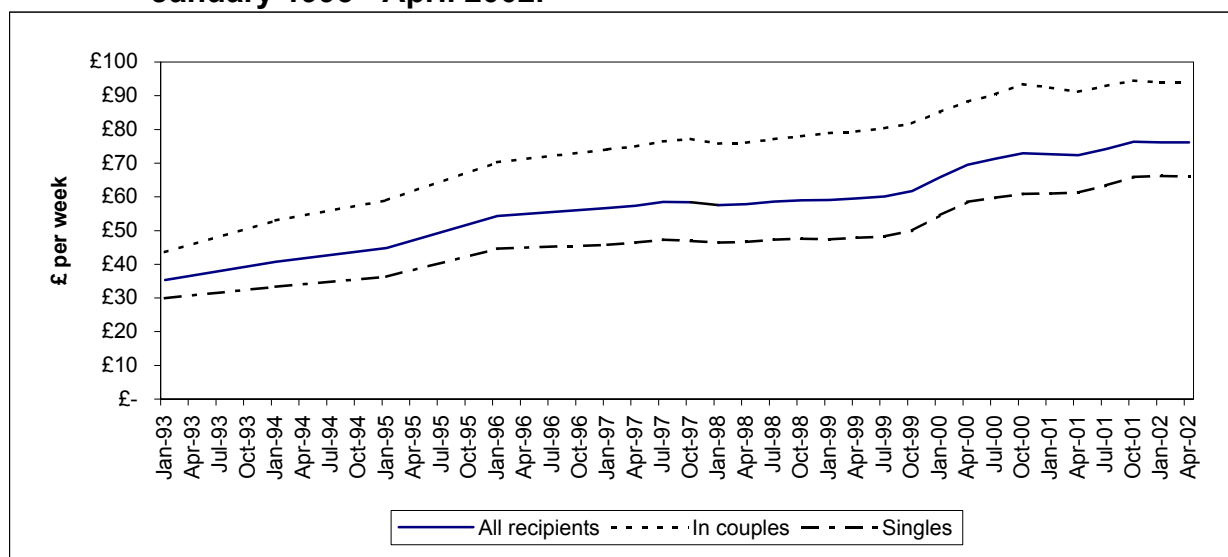
**Chart 1 : DWA/DPTC recipients by family type, GB office, Jan 1993 - Apr 2002.**

**Table 1.2 : Average DWA/DPTC award by family type of recipients, January 1993 - April 2002.**

*United Kingdom, £ per week*

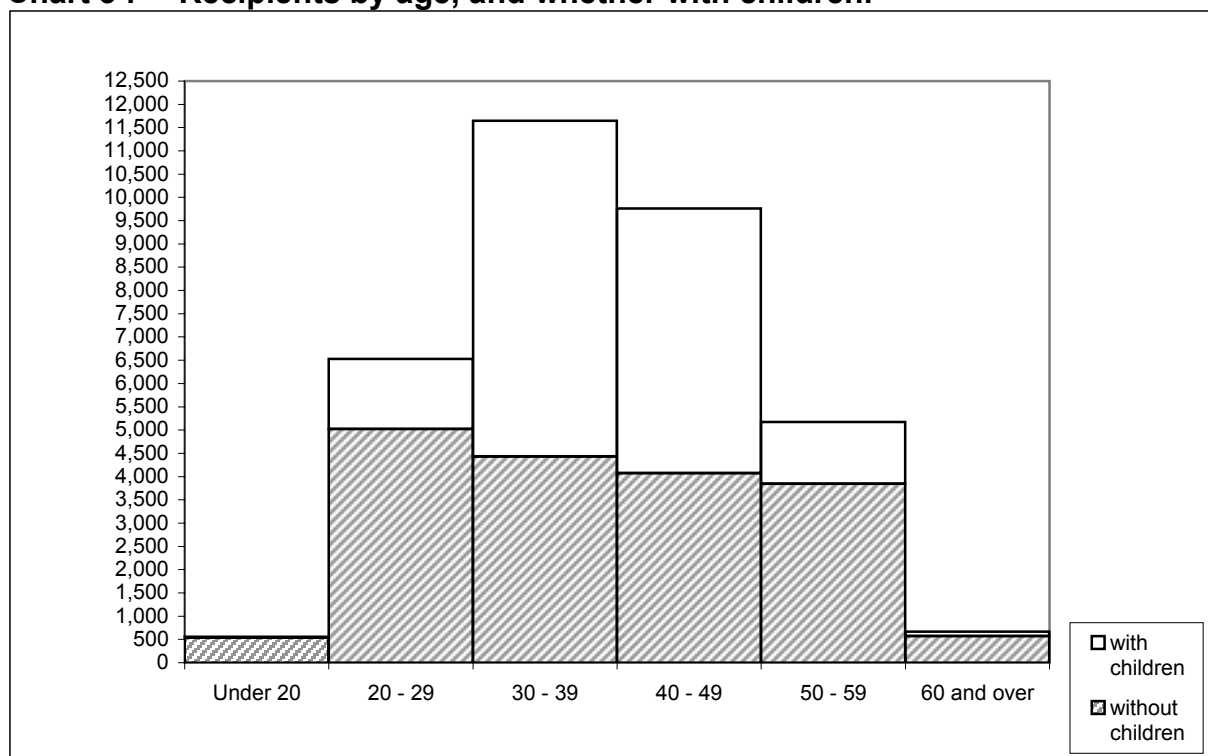
	All recipients		In couples		Singles	
	GB office <sup>1</sup>	Total	GB office <sup>1</sup>	Total	GB office <sup>1</sup>	Total
Jan-93	35.37	-	43.59	-	29.91	-
Jan-94	40.71	-	53.03	-	33.36	-
Jan-95	44.79	-	58.93	-	36.23	-
Jan-96	54.35	-	70.25	-	44.65	-
Jan-97	56.69	-	74.06	-	45.78	-
Apr-97	57.39	-	74.89	-	46.44	-
Jul-97	58.46	-	76.47	-	47.30	-
Oct-97	58.37	-	77.22	-	46.92	-
Jan-98	57.52	-	75.83	-	46.41	-
Apr-98	57.84	-	76.08	-	46.67	-
Jul-98	58.63	-	77.10	-	47.33	-
Oct-98	58.97	-	77.98	-	47.58	-
Jan-99	59.05	-	78.89	-	47.41	-
Apr-99	59.53	-	79.38	-	47.84	-
Jul-99	60.13	-	80.31	-	48.29	-
Oct-99	61.73	62.09	81.73	82.16	49.99	50.27
Jan-00	65.78	66.21	85.16	85.87	54.53	54.76
Apr-00	69.53	70.14	88.24	89.17	58.47	58.81
Jul-00	71.31	71.85	90.45	91.37	59.75	60.01
Oct-00	72.98	73.50	93.41	94.26	60.90	61.19
Jan-01	72.65	73.19	92.45	93.29	60.99	61.34
Apr-01	72.35	72.89	91.18	92.06	61.27	61.61
Jul-01	74.20	74.72	92.89	93.72	63.38	63.71
Oct-01	76.32	76.87	94.50	95.35	65.91	66.29
Jan-02	76.16	76.67	93.88	94.62	66.17	66.54
Apr-02	76.13	76.55	94.10	94.66	66.12	66.44

<sup>1</sup> Cases dealt with by the Northern Ireland tax credit office are excluded from the "GB office" series.

**Chart 2 : Average DWA/DPTC award by family type of recipients, GB office, January 1993 - April 2002.**

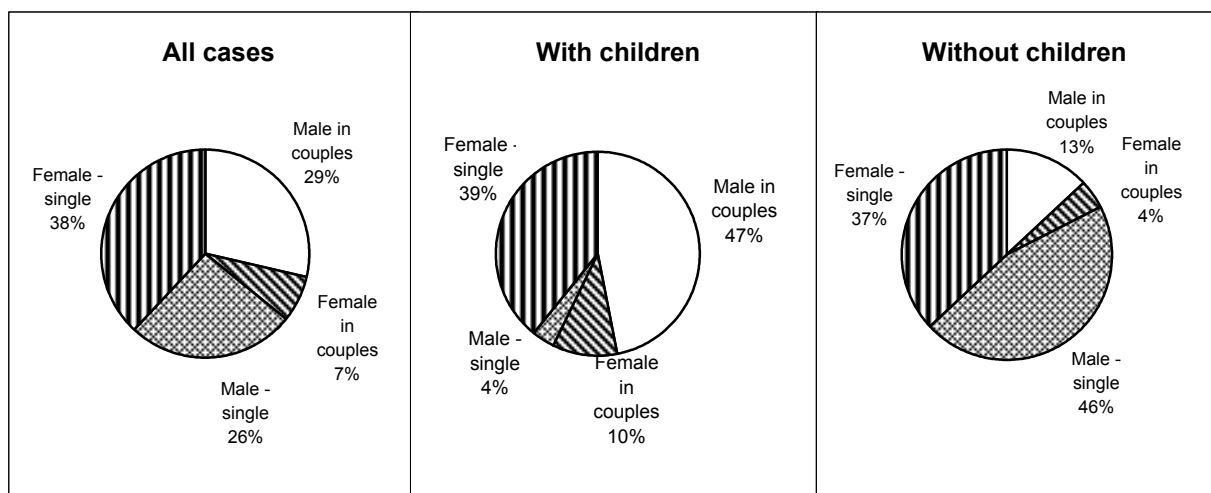
**Table 2.1 : Age and gender of recipients, and whether with children.**

	<i>United Kingdom</i>				
	All recipients	Male	%	Female	%
<b>All cases</b>	34,330	18,879	55	15,451	45
Under 20	554	361	65	193	35
20 - 29	6,530	3,565	55	2,965	45
30 - 39	11,648	6,093	52	5,555	48
40 - 49	9,760	5,280	54	4,480	46
50 - 59	5,174	3,019	58	2,155	42
60 and over	664	561	84	103	16
<b>With children</b>	15,851	8,027	51	7,824	49
Under 20	17	5	29	12	71
20 - 29	1,505	617	41	888	59
30 - 39	7,218	3,365	47	3,853	53
40 - 49	5,687	3,028	53	2,659	47
50 - 59	1,330	930	70	400	30
60 and over	94	82	87	12	13
<b>Without children</b>	18,479	10,852	59	7,627	41
Under 20	537	356	66	181	34
20 - 29	5,025	2,948	59	2,077	41
30 - 39	4,430	2,728	62	1,702	38
40 - 49	4,073	2,252	55	1,821	45
50 - 59	3,844	2,089	54	1,755	46
60 and over	570	479	84	91	16

**Chart 3 : Recipients by age, and whether with children.**

**Table 2.2 : Gender and family type of recipients, and average weekly award.**

		<i>United Kingdom</i>
	<b>All recipients</b>	<b>Average award £ per week</b>
<b>All cases</b>	34,330	76.55
Male - in couples	9,869	97.77
Female - in couples	2,425	82.03
Male -single	9,010	45.50
Female -single	13,026	80.93
<b>With children</b>	15,851	112.98
Male - in couples	7,453	108.81
Female - in couples	1,616	94.77
Male -single	574	107.41
Female -single	6,208	123.25
<b>Without children</b>	18,479	45.30
Male - in couples	2,416	63.70
Female - in couples	809	56.58
Male -single	8,436	41.28
Female -single	6,818	42.40

**Chart 4 : Family type and gender of recipients.**

**Table 2.3 : Main qualifying benefit of recipients, by whether with children, and average weekly award.**

	<i>United Kingdom</i>	
	<b>Recipients</b>	<b>Average award £ per week</b>
<b>All cases</b>	34,330	76.55
Higher rate Disability living allowance and analogous benefits	14,517	72.84
Lower rate Disability living allowance	7,095	66.76
Severe disablement allowance	2,227	63.58
Disability premium in Income support /Jobseeker's allowance	4,830	97.80
Disability premium in Housing benefit	33	83.66
Disability premium in Council tax benefit	12	85.05
Incapacity benefit (higher rate short term)	1,136	87.74
Incapacity benefit (long term)	4,406	84.89
Fast-Track entrants <sup>1</sup>	74	73.07
<b>With children</b>	15,851	112.98
Higher rate Disability living allowance and analogous benefits	6,721	105.85
Lower rate Disability living allowance	2,685	108.12
Severe disablement allowance	499	122.59
Disability premium in Income support /Jobseeker's allowance	2,886	129.00
Disability premium in Housing benefit/Council tax benefit	17	123.76
Incapacity benefit (higher rate short term)	666	114.18
Incapacity benefit (long term)	2,354	116.68
Fast-Track entrants <sup>1</sup>	23	125.49
<b>Without children</b>	18,479	45.30
Higher rate Disability living allowance and analogous benefits	7,796	44.38
Lower rate Disability living allowance	4,410	41.58
Severe disablement allowance	1,728	46.53
Disability premium in Income support /Jobseeker's allowance	1,944	51.49
Disability premium in Housing benefit/Council tax benefit	28	59.92
Incapacity benefit (higher rate short term)	470	50.29
Incapacity benefit (long term)	2,052	48.41
Fast-Track entrants <sup>1</sup>	51	49.42

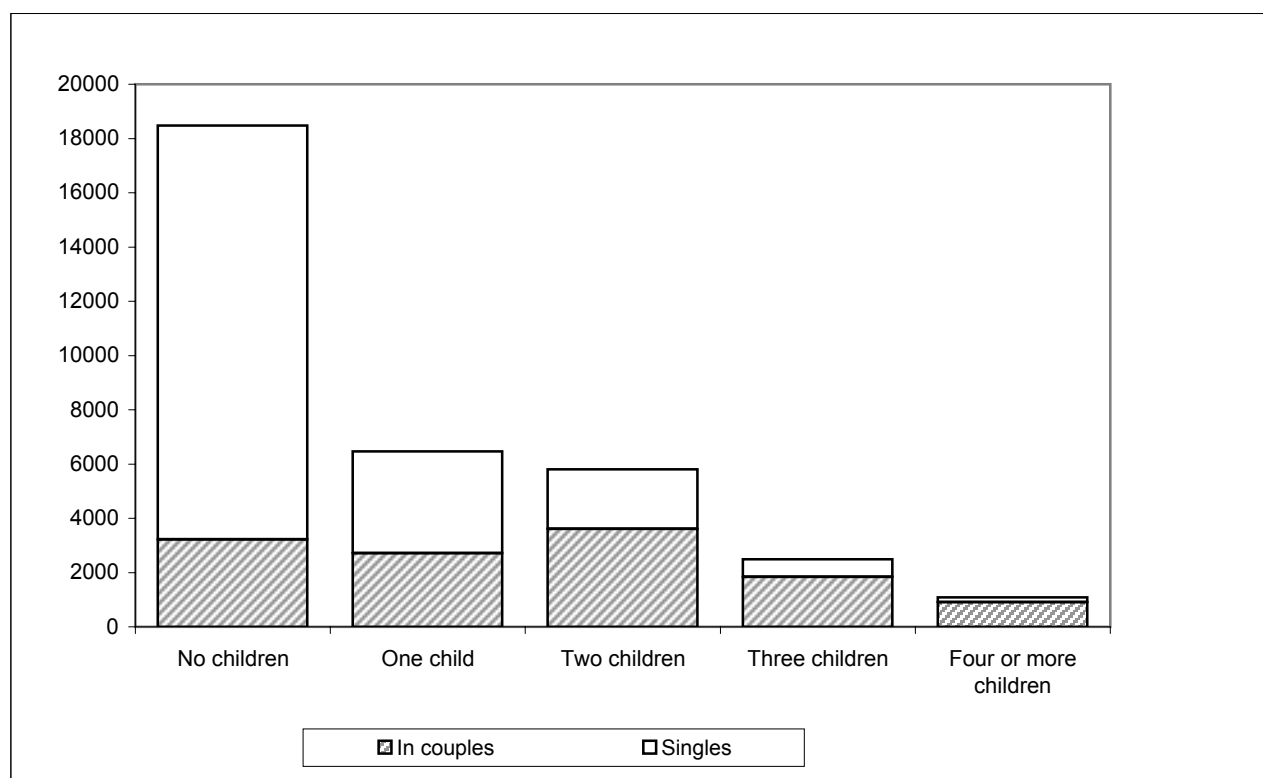
<sup>1</sup> Entrants through the Fast-Track must be receiving one of Statutory sick pay, Occupational sick pay, Incapacity benefit (lower rate short term), Income support paid on grounds of incapacity or National insurance credits awarded on the grounds of incapacity for work.

**Table 3.1 : Family type and gender of recipients, by weekly amount of award.***United Kingdom*

	All cases	Weekly amount of award						
		Under £20.00	£20.00 - £39.99	£40.00 - £59.99	£60.00 - £79.99	£80.00 - £99.99	£100.00 - £119.99	£120.00 and over
<b>With and without children</b>								
<b>All recipients</b>	34,330	2,711	6,132	6,825	5,397	2,914	3,933	6,418
Male	18,879	1,611	3,677	3,769	3,169	1,811	1,703	3,139
Female	15,451	1,100	2,455	3,056	2,228	1,103	2,230	3,279
<b>In couples</b>	12,294	707	1,119	1,407	1,695	2,076	1,852	3,438
Male	9,869	484	815	1,048	1,331	1,703	1,524	2,964
Female	2,425	223	304	359	364	373	328	474
<b>Singles</b>	22,036	2,004	5,013	5,418	3,702	838	2,081	2,980
Male	9,010	1,127	2,862	2,721	1,838	108	179	175
Female	13,026	877	2,151	2,697	1,864	730	1,902	2,805
<b>With children</b>								
<b>All recipients</b>	15,851	403	691	1,073	1,607	2,035	3,631	6,411
Male	8,027	260	446	666	941	1,106	4,608	
Female	7,824	143	245	407	666	929	5,434	
<b>In couples</b>	9,069	355	583	825	1,091	1,234	1,550	3,431
Male	7,453	254	428	629	869	1,019	4,254	
Female	1,616	101	155	196	222	215	727	
<b>Singles</b>	6,782	48	108	248	516	801	2,081	2,980
Male	574	6	18	37	72	87	179	175
Female	6,208	42	90	211	444	714	1,902	2,805
<b>Without children</b>								
<b>All recipients</b>	18,479	2,308	5,441	5,752	3,790	879	302	7
Male	10,852	1,351	3,231	3,103	2,228	705	234	
Female	7,627	957	2,210	2,649	1,562	174	75	
<b>In couples</b>	3,225	352	536	582	604	842	302	7
Male	2,416	230	387	419	462	684	234	
Female	809	122	149	163	142	158	75	
<b>Singles</b>	15,254	1,956	4,905	5,170	3,186	37	-	-
Male	8,436	1,121	2,844	2,684	1,766	21	-	-
Female	6,818	835	2,061	2,486	1,420	16	-	-

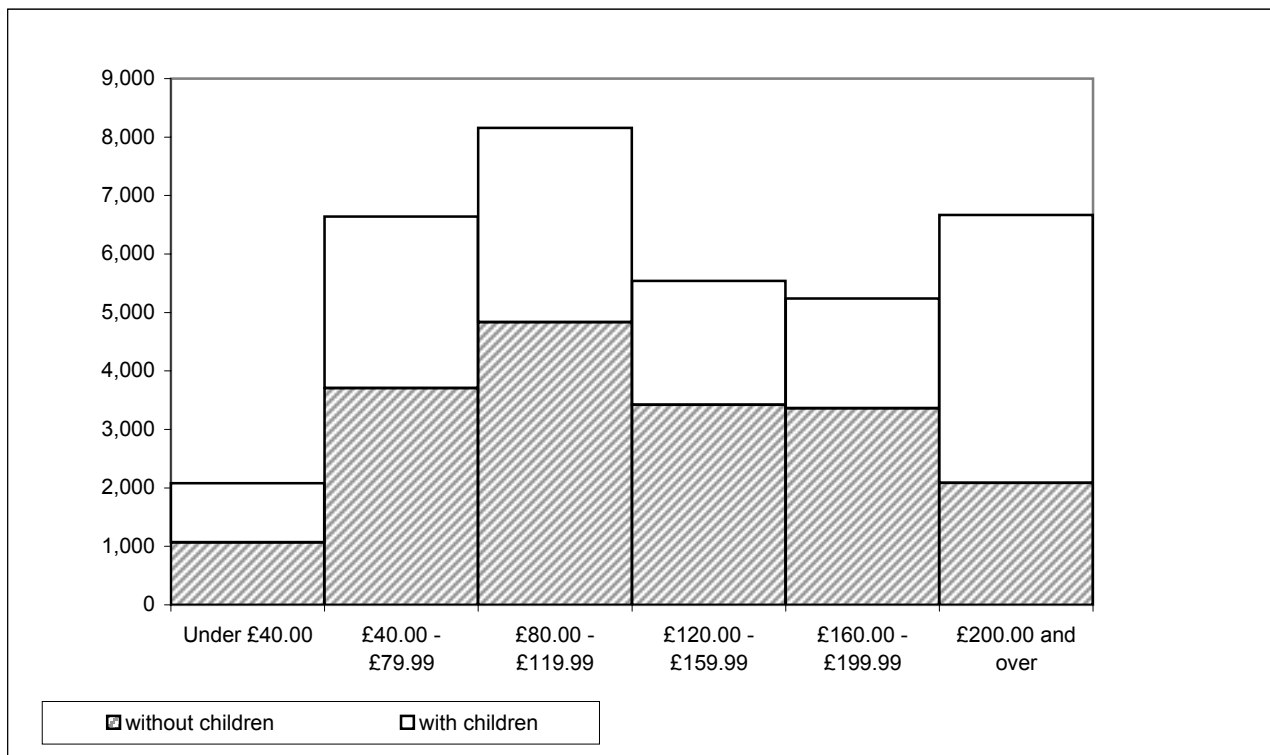
**Table 3.2 : Family size and type of recipients, by weekly amount of award.***United Kingdom*

	All cases	Weekly amount of award							Average award £ per week
		Under £20.00	£20.00 - £39.99	£40.00 - £59.99	£60.00 - £79.99	£80.00 - £99.99	£100.00 - £119.99	£120.00 and over	
<b>All recipients</b>	34,330	2,711	6,132	6,825	5,397	2,914	3,933	6,418	76.55
No children	18,479	2,308	5,441	5,752	3,790	879	302	7	45.30
One child	6,471	201	361	558	889	1,075	2,447	940	94.13
Two children	5,808	159	252	398	532	710	861	2,896	112.17
Three children	2,491	107		104	154	213	259	1,654	135.96
Four or more children	1,081		14	13	32	37	64	921	177.25
<b>In couples</b>	12,294	707	1,119	1,407	1,695	2,076	1,852	3,438	94.66
No children	3,225	352	536	582	604	842	302	7	61.91
One child	2,719	167	269	366	488	456	676	297	80.67
Two or more children	6,350	188	314	459	603	778	874	3,134	117.29
<b>Singles</b>	22,036	2,004	5,013	5,418	3,702	838	2,081	2,980	66.44
No children	15,254	1,956	4,905	5,170	3,186	37	-	-	41.78
One child	3,752	34	92	192	401	619	1,771	643	103.88
Two or more children	3,030	14	16	56	115	182	310	2,337	144.23

**Chart 5 : Recipients by number of children in family, and by family type.**

**Table 4.1 : Gross weekly earnings of recipients, by family type.***United Kingdom*

	All cases	Gross weekly earnings of recipients						Average gross earnings £ per week
		Under £40.00	£40.00 - £79.99	£80.00 - £119.99	£120.00 - £159.99	£160.00 - £199.99	£200.00 and over	
<b>All recipients</b>	34,330	2,083	6,642	8,158	5,538	5,241	6,668	136.44
In couples	12,294	1,175	2,305	2,226	1,443	1,589	3,556	147.33
Singles	22,036	908	4,337	5,932	4,095	3,652	3,112	130.36
<b>With children</b>	15,851	1,018	2,934	3,323	2,114	1,882	4,580	151.62
In couples	9,069	738	1,547	1,511	1,026	1,172	3,075	158.77
Singles	6,782	280	1,387	1,812	1,088	710	1,505	142.06
<b>Without children</b>	18,479	1,065	3,708	4,835	3,424	3,359	2,088	123.41
In couples	3,225	437	758	715	417	417	481	115.14
Singles	15,254	628	2,950	4,120	3,007	2,942	1,607	125.16

**Chart 6 : Recipients by gross weekly earnings, and by whether with children.**

**Table 4.2 : Recipients whose family incomes include social security benefits which are brought to account, by family type.**

*United Kingdom*

	All recipients	In couples		Singles
		To DPTC recipient	To partner only	
<b>Pensions:</b>				
Retirement pension	319	59	193	67
Bereavement / widow's benefit	160	-	-	160
War pension	50	38	2	10
<b>Unemployment related benefits:</b>				
Jobseeker's allowance	62	-	62	-
<b>Sickness and disability benefits:</b>				
Incapacity benefit	1,009	-	1,009	-
Severe disablement allowance	346	-	346	-
Industrial injuries disablement benefit	748	448	57	243
War disablement pension	161	121	14	26
<b>Carer benefits:</b>				
Invalid care allowance	1,247	55	1,098	94
<b>Others:</b>				
	34	10	-	24

Note: Certain benefits are excluded as they are not brought to account when calculating the level of award. Examples are Child benefit, Housing benefit, Council tax benefit and Disability living allowance.

**Table 4.3 : Recipients whose families receive other income which is brought to account, by family type.**

*United Kingdom*

	All recipients	In couples	Singles
<b>All cases</b>			
Benefits in kind	42	22	20
Rent and others	1,425	818	607
<b>With children</b>			
Benefits in kind	18	-	-
Rent and others	696	473	223
<b>Without children</b>			
Benefits in kind	24	8	16
Rent and others	729	345	384

## **Section 5 : Regional analysis**

This section shows the number of recipients in each country, and in each region of England. The numbers in each local authority and parliamentary constituency appear in "Working Families' and Disabled Person's Tax Credit Statistics: Geographical analyses", although for a different cycle of months; the May 2002 issue is due be published on 8th October 2002.

For each recipient, the country and region was identified by matching the postcode recorded as part of the correspondence address against the 2001 Version B Postcode Directory supplied by the Office for National Statistics. The regions thereby identified were according to their definitions at the end of December 2000.

Not all recipients have complete and accurate postcodes recorded. Each case is however allocated to a country, if necessary based on the rest of the address. Recipients in England are allocated to a region if the postcode, or the element present, is sufficient to do so with certainty.

**Table 5.1 Recipients in each Government Office Region, by employment status and family type.**

	All recipients			Employees			Self employed <sup>1</sup>		
	All	In couples	Singles	All	In couples	Singles	All	In couples	Singles
<b>United Kingdom</b>	34,330	12,294	22,036	29,651	9,408	20,243	4,679	2,886	1,793
<b>England</b>	25,996	9,473	16,523	22,390	7,256	15,134	3,606	2,217	1,389
North East	2,213	864	1,349	1,916	677	1,239	297	187	110
North West	5,253	1,866	3,387	4,494	1,378	3,116	759	488	271
Yorkshire and the Humber	3,318	1,337	1,981	2,887	1,065	1,822	431	272	159
East Midlands	2,320	963	1,357	1,991	751	1,240	329	212	117
West Midlands	3,145	1,150	1,995	2,750	898	1,852	395	252	143
Eastern	2,083	746	1,337	1,790	562	1,228	293	184	109
London	1,816	496	1,320	1,595	391	1,204	221	105	116
South East	2,811	904	1,907	2,441	694	1,747	370	210	160
South West	3,021	1,142	1,879	2,511	835	1,676	510	307	203
Region unknown	16	5	11	15	5	10	1	-	1
<b>Wales</b>	2,821	1,089	1,732	2,384	837	1,547	437	252	185
<b>Scotland</b>	3,294	922	2,372	2,980	743	2,237	314	179	135
<b>Northern Ireland</b>	2,219	810	1,409	1,897	572	1,325	322	238	84

**Table 5.2 Average weekly award for recipients in each Government Office Region, by employment status and family type.**

	All recipients			Employees			Self employed <sup>1</sup>		
	All	In couples	Singles	All	In couples	Singles	All	In couples	Singles
<b>United Kingdom</b>	76.55	94.66	66.44	71.56	86.38	64.67	108.16	121.66	86.44
<b>England</b>	75.72	94.73	64.82	70.55	86.58	62.86	107.81	121.41	86.10
North East	75.08	90.61	65.13	70.93	84.89	63.30	101.85	111.32	85.74
North West	80.15	97.54	70.56	74.95	88.26	69.06	110.93	123.74	87.86
Yorkshire and The Humber	78.00	92.80	68.02	73.19	85.02	66.28	110.24	123.26	87.97
East Midlands	77.59	95.27	65.04	72.51	88.69	62.71	108.31	118.59	89.69
West Midlands	74.42	93.75	63.28	69.59	85.74	61.77	108.03	122.29	82.90
Eastern	72.58	93.06	61.15	66.02	82.26	58.59	112.62	126.04	89.96
London	71.66	95.43	62.73	68.05	88.61	61.37	97.76	120.81	76.90
South East	70.76	93.77	59.85	65.56	85.53	57.63	105.05	121.00	84.11
South West	75.14	97.66	61.45	68.51	89.03	58.29	107.77	121.15	87.54
<b>Wales</b>	81.84	93.85	74.29	78.00	87.91	72.63	102.81	113.58	88.14
<b>Scotland</b>	74.50	88.03	69.25	71.25	81.03	68.00	105.42	117.06	89.99
<b>Northern Ireland</b>	82.60	102.50	71.16	75.91	88.58	70.44	121.99	135.94	82.48

1. Recipient has self employment income source and no source of income as an employee

**Table 6.1 : Main qualifying benefit of recipients of awards starting between October 1999 and April 2002, by type of award.**

		<i>United Kingdom</i>
	<b>All cases</b>	<b>Average award £ per week</b>
<b>All awards</b>		
<b>All qualifying benefits</b>	156,236	74.67
Disability living allowance - higher rate & analogous benefits	66,526	71.20
Disability living allowance - lower rate	32,303	65.21
Severe disablement benefit	10,559	61.89
Disability premium in IS/JSA	21,484	94.65
Incapacity benefit (higher rate short term)	5,161	85.47
Incapacity benefit (long term)	19,744	84.01
Other <sup>1</sup>	459	79.26
<b>New awards <sup>2</sup></b>		
<b>All qualifying benefits</b>	36,804	73.89
Disability living allowance - higher rate & analogous benefits	13,826	67.87
Disability living allowance - lower rate	7,050	66.00
Severe disablement benefit	2,487	63.29
Disability premium in IS/JSA	6,145	94.64
Incapacity benefit (higher rate short term)	1,630	82.23
Incapacity benefit (long term)	5,543	78.34
Other <sup>1</sup>	123	70.98
<b>Renewal awards <sup>3</sup></b>		
<b>All qualifying benefits</b>	110,006	75.38
Disability living allowance - higher rate & analogous benefits	47,912	72.49
Disability living allowance - lower rate	22,988	65.26
Severe disablement benefit	7,636	61.57
Disability premium in IS/JSA	14,445	95.02
Incapacity benefit (higher rate short term)	3,332	87.35
Incapacity benefit (long term)	13,397	86.60
Other <sup>1</sup>	296	82.98
<b>Repeat awards <sup>4</sup></b>		
<b>All qualifying benefits</b>	9,426	69.43
Disability living allowance - higher rate & analogous benefits	4,788	67.85
Disability living allowance - lower rate	2,265	62.30
Severe disablement benefit	436	59.36
Disability premium in IS/JSA	894	88.65
Incapacity benefit (higher rate short term)	199	80.50
Incapacity benefit (long term)	804	79.92
Other <sup>1</sup>	40	77.25

<sup>1</sup>Disability premium in Housing benefit or Council tax benefit, plus Fast-Track entrants.

<sup>2</sup>New awards are those where the recipient has not received DWA or DPTC within the previous 2 years.

<sup>3</sup>Renewal awards are those following on immediately from a previous award, without a break.

<sup>4</sup>Repeat awards are those where the recipient had a previous award but there has been a break between awards of up to 2 years.

Figures for DWA awards in Great Britain starting between November 1992 and September 1999 appear in the enquiry statistics for October 1999.

**Table 6.2 : Recipients of awards starting between October 1999 and April 2002  
by type of award and family type.**

<i>United Kingdom</i>					
	All Cases	In couples		Singles	
		Male	Female	Male	Female
<b>All awards</b>	156,236	47,688	10,755	41,163	56,630
<b>New awards</b> <sup>1</sup>	36,804	10,476	3,196	9,110	14,022
<b>Renewal awards</b> <sup>2</sup>	110,006	34,644	6,844	29,185	39,333
<b>Repeat awards</b> <sup>3</sup>	9,426	2,568	715	2,868	3,275

<sup>1</sup>New awards are those where the recipient has not received DWA or DPTC within the previous 2 years.

<sup>2</sup>Renewal awards are those following on immediately from a previous award, without a break.

<sup>3</sup>Repeat awards are those where the recipient had a previous award but there has been a break between awards of up to 2 years.

Figures for DWA awards in Great Britain starting between November 1992 and September 1999 appear in the enquiry statistics for October 1999.

**Table 6.3 : : Disallowances between October 1999 and April 2002 by reason of disallowance.**

		<i>United Kingdom</i>
		<b>Number of disallowances</b>
<b>All disallowances</b>		28,129
<b>All A codes</b>		119
A1	Applicant was not in UK	109
A2	Applicant was not normally living in UK	2
A3	Partner not normally living in UK	2
A4	All applicants earnings from outside UK	2
A5	Neither applicant nor partner have UK earnings	1
A7	All partner earnings outside UK (applicant may have earnings inside UK)	1
A9	Failure to provide information on residency	2
<b>All C codes</b>		287
C1	Applicant's capital exceeds £16,000	226
C2	Applicant and partner's capital exceeds £16,000	40
C3	Failure to provide information about value of applicant and partner's capital	4
C4	Failure to provide information about value of applicant's capital	17
<b>All D codes</b>		6,196
D1	Applicant not doing paid work for an average of 16 hours a week or more	1,973
D2	Applicant not in paid work	2,054
D5	Applicant not engaged in remunerative work in relevant weeks	1,759
D7	Applicant not normally engaged in paid work	375
D11	Applicant not treated as in paid work - charity	2
D15	Applicant could not be treated as in paid work on the information available	33
<b>All E codes</b>		6,220
E1	Applicant's income higher than the level at which DPTC would become payable	5,610
E2	Applicant's entitlement less than the minimum amount of DPTC	137
E3	On the information available, the applicant or partner's income was higher then the level at which DPTC would become payable	473
<b>All other codes</b>		15,307
G1	Any disallowance not covered by other categories	491
G2	Applicant not fulfilled National Insurance Number requirements	2
G3	Partner not fulfilled National Insurance Number requirements	8
I	DPTC claim made more than 6 weeks before DPTC end date	4,217
J1, J2	Qualifying benefit test not satisfied	6,999
J3, K1	Disability test not satisfied	1,603
J4	Fast-track application: reduction in earnings rule not satisfied	10
L	Lapsed claim	36
W	Claimant has withdrawn claim	1,941

Figures for DWA disallowances in Great Britain occurring between November 1992 and September 1999 appear in the enquiry statistics for October 1999.

**Table 6.4 : Recipients of renewal and repeat awards starting between October 1999 and April 2002 by disability type and age.**

*United Kingdom*

	All ages	Under 30	30 - 39	40 - 49	50 - 59	60 and over
<b>Renewal awards <sup>1</sup></b>						
Mental disabilities - treatment	9,148	1,024	3,492	3,177	1,376	79
Mental disabilities - day to day things	9,942	2,758	3,385	2,470	1,202	127
Mental disabilities - getting on with people	8,623	1,777	3,256	2,503	1,024	63
Fits and comas	820	166	359	203	86	6
Exhaustion and pain	32,259	3,082	10,368	10,938	6,831	1,040
Seeing	3,283	605	1,234	902	465	77
Hearing	1,896	343	702	481	320	50
Communicating	3,420	942	1,161	782	467	68
Getting around	3,888	344	1,149	1,362	850	183
Using your hands	5,147	931	1,756	1,535	818	107
Reaching with your arms	860	102	254	264	219	21
<b>Repeat awards <sup>2</sup></b>						
Mental disabilities - treatment	841	109	318	297	112	5
Mental disabilities - day to day things	836	260	287	194	89	6
Mental disabilities - getting on with people	777	184	300	212	81	-
Fits and comas	62	29	22	11	-	-
Exhaustion and pain	2,232	318	724	756	402	32
Seeing	336	95	133	83	25	-
Hearing	198	44	79	43	25	7
Communicating	321	101	117	63	33	7
Getting around	273	46	79	84	64	-
Using your hands	488	139	163	117	69	-
Reaching with your arms	91	21	22	25	23	-

<sup>1</sup>Renewal awards are those following on immediately from a previous award, without a break.

<sup>2</sup>Repeat awards are those where the recipient had a previous award but there has been a break between awards of up to 2 years.

Figures for DWA awards in Great Britain starting between November 1992 and September 1999 appear in the enquiry statistics for October 1999.

Claimants may have one or more type(s) of disability. This table records all declared and confirmed disability types for those claimants who complete form DPTC2 prior to renewal/ repeat awards.

# Disabled Person's Tax Credit

## Rates and thresholds, 1999-00 to 2002-03<sup>1</sup>

		1999-00	2000-01	2001-02	2002-03
<b>Basic tax credit</b>					
Lone parent or couple	£ per week	83.55	84.90	91.25 <sup>8</sup>	95.30 <sup>10</sup>
Single person	£ per week	54.30	55.15	61.05 <sup>8</sup>	62.10
<b>30-hour tax credit</b>					
	£ per week	11.05	11.25	11.45	11.65
<b>Child tax credit</b>					
Under 11	£ per week	19.85	25.60 <sup>7</sup>	26.00	26.45
11-16 <sup>2</sup>	£ per week	20.90	25.60 <sup>7</sup>	26.00	26.45
16-18 <sup>2</sup>	£ per week	25.95	26.35	26.75	27.20
<b>Disabled child tax credit<sup>3</sup></b>					
	£ per week	21.90	22.25	30.00	35.50
<b>Enhanced disability tax credit</b>					
Lone parent or couple	£ per week	-	-	16.00	16.25
Single person	£ per week	-	-	11.05	11.25
Child <sup>4</sup>	£ per week	-	-	41.05	46.75
<b>Childcare tax credit</b>					
Maximum eligible costs allowed					
1 child <sup>5</sup>	£ per week	100.00	100.00	135.00 <sup>9</sup>	135.00
2+ children <sup>5</sup>	£ per week	150.00	150.00	200.00 <sup>9</sup>	200.00
Percentage of allowed childcare costs in credit					
		70%	70%	70%	70%
<b>Savings</b>					
Amount disregarded	£	3,000	3,000	3,000	3,000
£1 per week income assumed					
per additional:	£	250	250	250	250
Upper limit	£	16,000	16,000	16,000	16,000
<b>Reduction of award through income<sup>6</sup></b>					
Income threshold - lone parent or couple	£ per week	90.00	91.45	92.90	94.50
Income threshold - single person	£ per week	70.00	71.10	72.25	73.50
Income taper rate		55%	55%	55%	55%
Minimum award	£ per week	0.50	0.50	0.50	0.50

**Notes:**

- <sup>1</sup> The rates apply to awards starting from the first Tuesday after 5 April in each year, unless otherwise stated.
- <sup>2</sup> These rates apply to awards starting from the September following the child's relevant birthday.
- <sup>3</sup> Payable in addition to the child tax credit.
- <sup>4</sup> Payable instead of the disabled child tax credit.
- <sup>5</sup> Number of children for whom eligible childcare costs are incurred.
- <sup>6</sup> Income is net of tax, national insurance contributions and half of pension contributions, and excludes Child benefit, Housing benefit, Council tax benefit, maintenance and investment income. The award is reduced by the excess of income over the threshold, multiplied by the income taper rate.
- <sup>7</sup> For awards starting from 6 June 2000. £21.25 for awards starting during April and May 2000
- <sup>8</sup> For awards starting from 5 June 2001. £5.00 lower for awards starting during April and May 2001
- <sup>9</sup> For awards starting from 5 June 2001. The 2000-01 level for awards starting during April and May 2001.
- <sup>10</sup> For awards starting from 4 June 2002. £2.50 lower for awards starting during April and May 2002

**£5.00**