

---

# **Disabled Person's Tax Credit Statistics**

## **Quarterly Enquiry**

### **United Kingdom April 2001**

---

Contact point for enquiries and requests for further copies:-

Analysis and Research (TCASP)  
Inland Revenue  
Room 54 - New Wing  
Somerset House  
London  
WC2R 1LB  
☎ : 020 - 7438 6275  
Fax : 020 - 7438 4329  
E-mail : ar\_tcasp.ir.sh@gtnet.gov.uk

This, and issues back to October 1999 can be found on the Inland Revenue web site : [www.inlandrevenue.gov.uk / statistics](http://www.inlandrevenue.gov.uk/statistics)

The July 2001 issue is due to be published on the web site on Tuesday 11th December 2001.

#### A NATIONAL STATISTICS PUBLICATION

National Statistics are produced to high professional standards set out in the National Statistics Code of Practice. They undergo regular quality assurance reviews to ensure that they meet customer needs. They are produced free from any political interference.

For general enquiries about National Statistics, contact the National Statistics Public Enquiry Service on

☎ : 020 - 7533 5888  
minicom : 01633 812399  
E-mail : info@statistics.gov.uk  
Fax : 01633 652747  
Letters : room DG/18, 1 Drummond Gate, LONDON, SW1V 2QQ

You can also find National Statistics on the internet - go to [www.statistics.gov.uk](http://www.statistics.gov.uk)

# Disabled Person's Tax Credit Statistics

## Quarterly Enquiry

### United Kingdom

April 2001

<b>Contents</b>	<b>PAGE</b>
Introduction .....	1
Main findings .....	1
List of tables .....	2
Section 1 : Time series .....	4
Section 2 : Family type .....	7
Section 3 : Amount of award .....	10
Section 4 : Earnings and other income .....	12
Section 5 : Geographical analysis .....	14
Section 6 : Historical DPTC .....	28

## Introduction

Disabled Person's' Tax Credit (DPTC) is a tax credit available to adults who are in remunerative work for at least 16 hours per week, and who have an illness or disability which puts them at a disadvantage in getting a job.

Awards of DPTC cover 26 weeks. These tables cover recipients at 30 April 2001 (that is, with awards with start and end dates spanning this date).

DPTC replaced Disability Working Allowance (DWA) from 5 October 1999. Time series of the number of recipients of DPTC and DWA are also shown, but for dates before October 1999 figures are available only for recipients in Great Britain (excluding Northern Ireland).

The figures in the tables are based on a 100% scan of awards. They have been compiled four months after the reference date, by which time almost all awards current at the reference date have been processed and entered onto the computer system. The tables cover recipients in the United Kingdom, unless otherwise stated. To ensure that information about individuals is not disclosed, most cells containing less than five cases are shown as '-', and some other cells are bracketed together.

## Main Findings

There were 29,201 recipients of DPTC at 30 April 2001, 4 per cent higher than at 31 January 2001.

18,391 of the recipients were single adults (including lone parents), who had an average award of £61.64 per week. 10,810 were in couples; they had an average award of £92.13 per week.

The overall average award was £72.93 per week.

46 per cent of recipients had children. Their average weekly award was £108.75, compared with £42.60 for recipients with no children.

For 42 per cent of recipients, higher rate Disability living allowance, or an analogous benefit, was the main qualifying benefit. Lower rate Disability living allowance was the main qualifying benefit for a further 21 per cent.

For recipients with children, 62% of awards were over £100 per week.

The average gross weekly earnings of the recipients was £128.15.

## List of Tables

### Section 1 : Time series

- Table 1.1      DWA/DPTC recipients by family type, January 1993 - April 2001.
- Chart 1        DWA/DPTC recipients by family type, Great Britain, January 1993 - April 2001.
- Table 1.2      Average DWA/DPTC award by family type of recipients, January 1993 - April 2001.
- Chart 2        Average DWA/DPTC award by family type of recipients, Great Britain, January 1993 to April 2001

### Section 2 : Family type

- Table 2.1      Age and gender of recipients, and whether with children.
- Chart 3        Recipients by age, and whether with children.
- Table 2.2      Gender and family type of recipients, and average weekly award.
- Chart 4        Family type and gender of recipients.
- Table 2.3      Main qualifying benefit of recipients, by whether with children, and average weekly award.

### Section 3 : Amount of award

- Table 3.1      Family type and gender of recipients, by weekly amount of award.
- Table 3.2      Family size and type of recipients, by weekly amount of award.
- Chart 5        Recipients by number of children in family, and by family type.

#### **Section 4 : Earnings and other income**

- Table 4.1      Gross weekly earnings of recipients, by family type.
- Chart 6        Recipients by gross weekly earnings, and by whether with children.
- Table 4.2      Recipients whose family incomes include social security benefits which are brought to account, by family type.
- Table 4.3      Recipients whose families receive other income which is brought to account, by family type.

#### **Section 5 : Geographical analysis**

- Table 5.1      Recipients in each Government Office Region, by employment status and family type.
- Table 5.2      Average weekly award for recipients in each Government Office Region, by employment status and family type.
- Table 5.3      Recipients in each local authority
- Table 5.4      Recipients in each parliamentary constituency

#### **Section 6 : Historical DPTC**

- Table 6.1      Main qualifying benefit of recipients of awards starting between October 1999 and April 2001, by type of award.
- Table 6.2 :      Recipients of awards starting between October 1999 and April 2001 by type of award and family type.
- Table 6.3 :      Disallowances between October 1999 and April 2001 by reason of disallowance.
- Table 6.4 :      Recipients of renewal and repeat awards starting between October 1999 and April 2001 by disability type and age.

## **Section 1 : Time series**

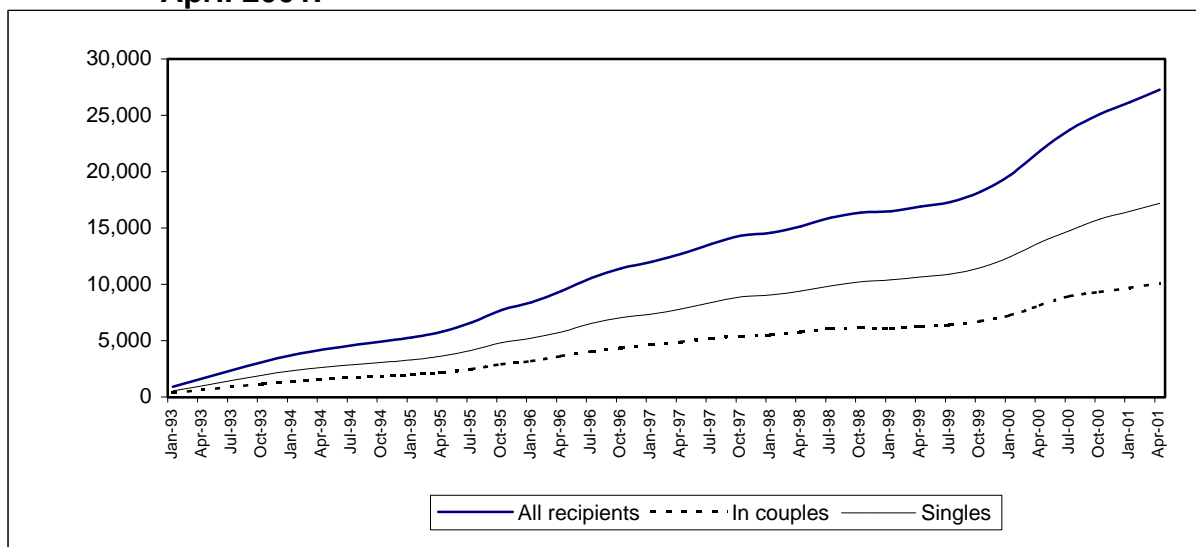
This section shows back quarterly series for the number of recipients of Disability Working Allowance and Disabled Person's Tax Credit, and their average awards.

For November 1999 and February 2000 the recipients are a mixture of Disability Working Allowance and Disabled Person's Tax Credit recipients. Disability Working Allowance recipients are those with awards starting up to 30 September 1999 and still current at the reference date.

The figures for January 2001 are slightly different to those published last time, as they include the recipients of awards made after the scan for the previous publication and then backdated.

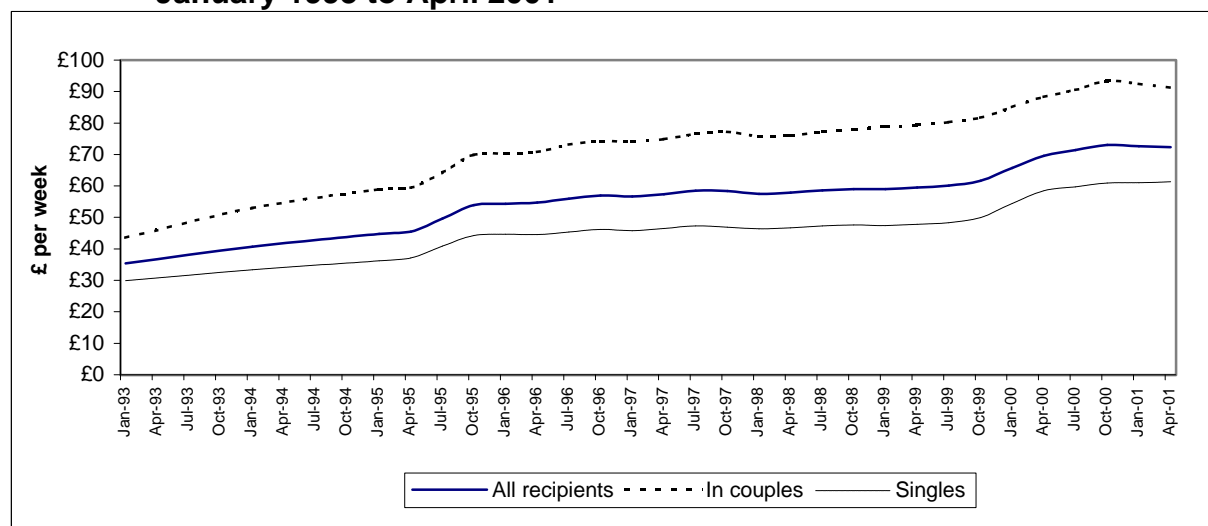
**Table 1.1 : DWA/DPTC recipients by family type, January 1993 - April 2001.**

	All recipients		In couples		Singles	
	Great Britain	United Kingdom	Great Britain	United Kingdom	Great Britain	United Kingdom
Jan-93	904	-	361	-	543	-
Jan-94	3,722	-	1,392	-	2,330	-
Jan-95	5,277	-	1,990	-	3,287	-
Apr-95	5,782	-	2,152	-	3,630	-
Jul-95	6,615	-	2,465	-	4,150	-
Oct-95	7,719	-	2,899	-	4,820	-
Jan-96	8,406	-	3,186	-	5,220	-
Apr-96	9,416	-	3,638	-	5,778	-
Jul-96	10,577	-	4,049	-	6,528	-
Oct-96	11,409	-	4,359	-	7,050	-
Jan-97	11,979	-	4,620	-	7,359	-
Apr-97	12,689	-	4,881	-	7,808	-
Jul-97	13,575	-	5,191	-	8,384	-
Oct-97	14,306	-	5,405	-	8,901	-
Jan-98	14,564	-	5,500	-	9,064	-
Apr-98	15,145	-	5,753	-	9,392	-
Jul-98	15,910	-	6,040	-	9,870	-
Oct-98	16,353	-	6,125	-	10,228	-
Jan-99	16,483	-	6,093	-	10,390	-
Apr-99	16,904	-	6,263	-	10,641	-
Jul-99	17,305	-	6,400	-	10,905	-
Oct-99	18,222	19,445	6,738	7,207	11,484	12,238
Jan-00	19,678	21,017	7,232	7,740	12,446	13,277
Apr-00	21,853	23,373	8,132	8,725	13,721	14,648
Jul-00	23,732	25,355	8,955	9,574	14,777	15,781
Oct-00	25,112	26,847	9,330	9,992	15,782	16,855
Jan-01	26,172	27,962	9,699	10,367	16,473	17,595
Apr-01	27,277	29,201	10,098	10,810	17,179	18,391

**Chart 1 : DWA/DPTC recipients by family type, Great Britain, January 1993 - April 2001.**

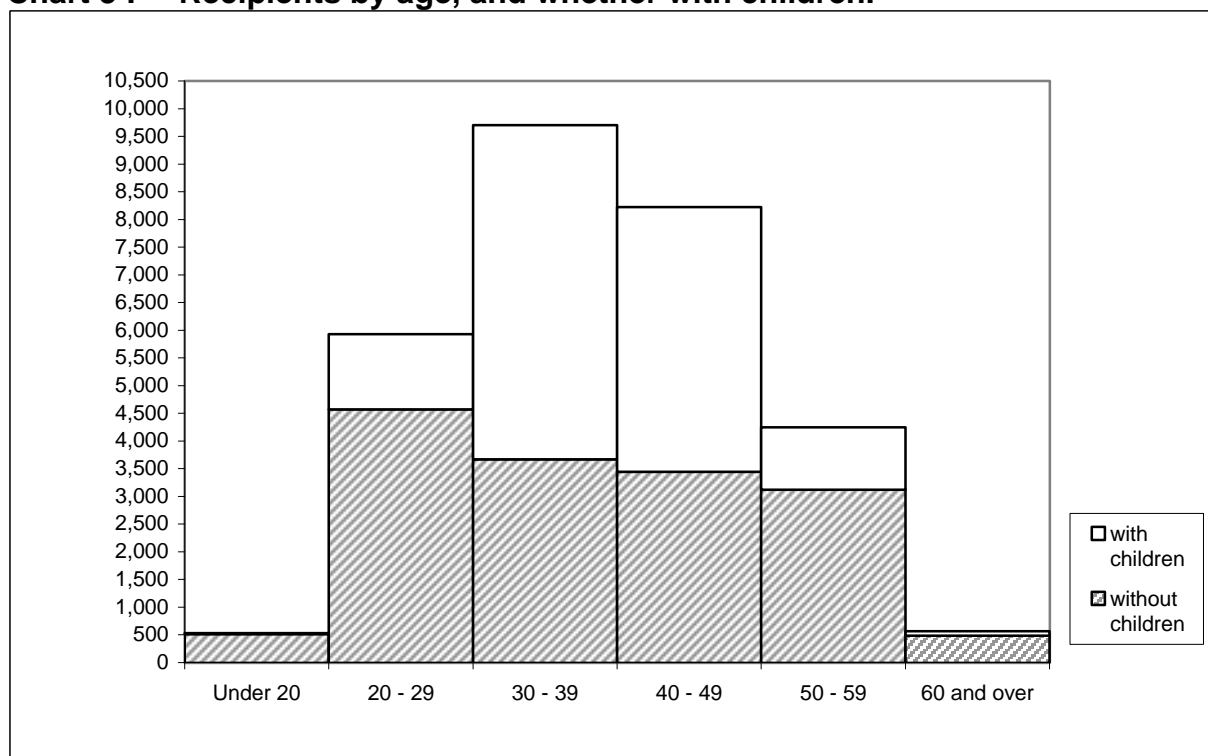
**Table 1.2 : Average DWA/DPTC award by family type of recipients, January 1993 - April 2001.**

	<i>£ per week</i>					
	All recipients		In couples		Singles	
	Great Britain	United Kingdom	Great Britain	United Kingdom	Great Britain	United Kingdom
Jan-93	35.37	-	43.59	-	29.91	-
Jan-94	40.71	-	53.03	-	33.36	-
Jan-95	44.79	-	58.93	-	36.23	-
Apr-95	45.46	-	59.43	-	37.17	-
Jul-95	49.65	-	64.32	-	40.94	-
Oct-95	53.87	-	69.90	-	44.22	-
Jan-96	54.35	-	70.25	-	44.65	-
Apr-96	54.72	-	70.84	-	44.57	-
Jul-96	55.97	-	73.10	-	45.35	-
Oct-96	56.92	-	74.22	-	46.23	-
Jan-97	56.69	-	74.06	-	45.78	-
Apr-97	57.39	-	74.89	-	46.44	-
Jul-97	58.46	-	76.47	-	47.30	-
Oct-97	58.37	-	77.22	-	46.92	-
Jan-98	57.52	-	75.83	-	46.41	-
Apr-98	57.84	-	76.08	-	46.67	-
Jul-98	58.63	-	77.10	-	47.33	-
Oct-98	58.97	-	77.98	-	47.58	-
Jan-99	59.05	-	78.89	-	47.41	-
Apr-99	59.53	-	79.38	-	47.84	-
Jul-99	60.13	-	80.31	-	48.29	-
Oct-99	61.66	62.09	81.64	82.16	49.94	50.27
Jan-00	65.69	66.21	85.05	85.87	54.43	54.76
Apr-00	69.56	70.14	88.29	89.17	58.46	58.81
Jul-00	71.37	71.85	90.57	91.37	59.73	60.01
Oct-00	73.02	73.53	93.43	94.28	60.95	61.23
Jan-01	72.68	73.20	92.47	93.31	61.03	61.35
Apr-01	72.38	72.93	91.24	92.13	61.30	61.64

**Chart 2 : Average DWA/DPTC award by family type of recipients, Great Britain, January 1993 to April 2001**

**Table 2.1 : Age and gender of recipients, and whether with children.**

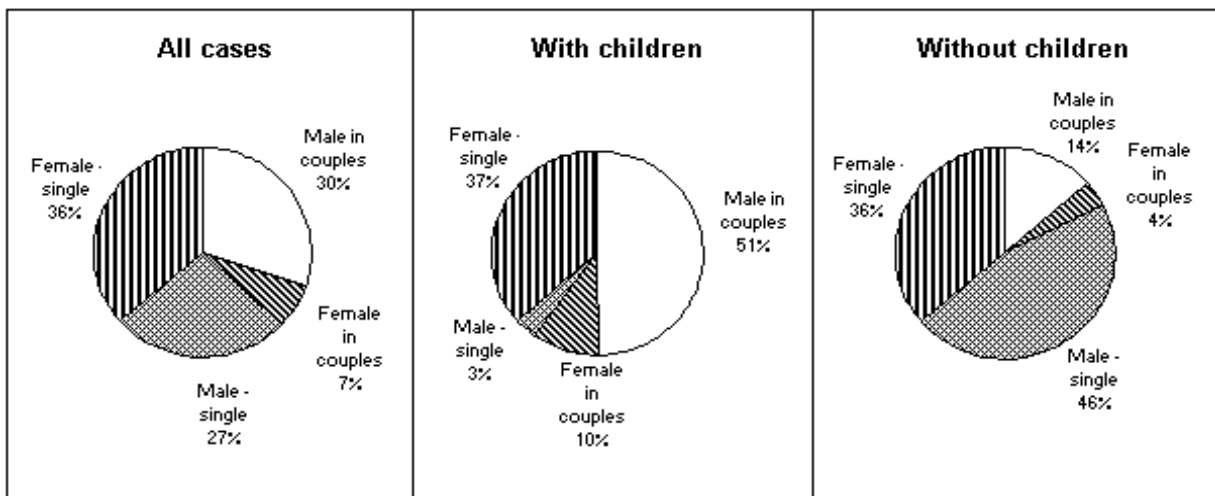
	<i>United Kingdom</i>				
	All recipients	Male	%	Female	%
<b>All cases</b>	29,201	16,580	57	12,621	43
Under 20	532	306	58	226	42
20 - 29	5,930	3,260	55	2,670	45
30 - 39	9,705	5,270	54	4,435	46
40 - 49	8,223	4,682	57	3,541	43
50 - 59	4,245	2,583	61	1,662	39
60 and over	566	479	85	87	15
<b>With children</b>	13,387	7,127	53	6,260	47
Under 20	18	5	28	13	72
20 - 29	1,358	566	42	792	58
30 - 39	6,033	3,004	50	3,029	50
40 - 49	4,777	2,698	56	2,079	44
50 - 59	1,122	787	70	335	30
60 and over	79	67	85	12	15
<b>Without children</b>	15,814	9,453	60	6,361	40
Under 20	514	301	59	213	41
20 - 29	4,572	2,694	59	1,878	41
30 - 39	3,672	2,266	62	1,406	38
40 - 49	3,446	1,984	58	1,462	42
50 - 59	3,123	1,796	58	1,327	42
60 and over	487	412	85	75	15

**Chart 3 : Recipients by age, and whether with children.**

**Table 2.2 : Gender and family type of recipients, and average weekly award.**

<i>United Kingdom</i>		
	<b>All recipients</b>	<b>Average award £ per week</b>
<b>All cases</b>	29,201	72.93
Male - in couples	8,816	95.22
Female - in couples	1,994	78.47
Male -single	7,764	42.68
Female -single	10,627	75.49
<b>With children</b>	13,387	108.75
Male - in couples	6,663	106.39
Female - in couples	1,352	89.91
Male -single	464	103.77
Female -single	4,908	117.62
<b>Without children</b>	15,814	42.60
Male - in couples	2,153	60.64
Female - in couples	642	54.38
Male -single	7,300	38.80
Female -single	5,719	39.33

**Chart 4 : Family type and gender of recipients.**



**Table 2.3 : Main qualifying benefit of recipients, by whether with children, and average weekly award.**

	<i>United Kingdom</i>	
	<b>Recipients</b>	<b>Average award £ per week</b>
<b>All cases</b>	29,201	72.93
Higher rate Disability living allowance and analogous benefits	12,326	69.13
Lower rate Disability living allowance	6,088	63.87
Severe disablement allowance	2,063	59.38
Disability premium in Income support /Jobseeker's allowance	3,980	93.24
Disability premium in Housing benefit	44	77.22
Disability premium in Council tax benefit	19	73.47
Incapacity benefit (higher rate short term)	981	85.42
Incapacity benefit (long term)	3,666	82.92
Fast-Track entrants <sup>1</sup>	34	69.66
<b>With children</b>	13,387	108.75
Higher rate Disability living allowance and analogous benefits	5,740	101.15
Lower rate Disability living allowance	2,319	103.60
Severe disablement allowance	457	117.08
Disability premium in Income support /Jobseeker's allowance	2,298	125.86
Incapacity benefit (higher rate short term)	574	113.04
Incapacity benefit (long term)	1,962	113.67
Other cases <sup>2</sup>	37	118.16
<b>Without children</b>	15,814	42.60
Higher rate Disability living allowance and analogous benefits	6,586	41.22
Lower rate Disability living allowance	3,769	39.43
Severe disablement allowance	1,606	42.96
Disability premium in Income support /Jobseeker's allowance	1,682	48.68
Incapacity benefit (higher rate short term)	407	46.47
Incapacity benefit (long term)	1,704	47.50
Other cases <sup>2</sup>	60	46.50

<sup>1</sup> Entrants through the Fast-Track must be receiving one of Statutory sick pay, Occupational sick pay, Incapacity benefit (lower rate, short term), Income support paid on grounds of incapacity or National insurance credits awarded on the grounds of incapacity for work.

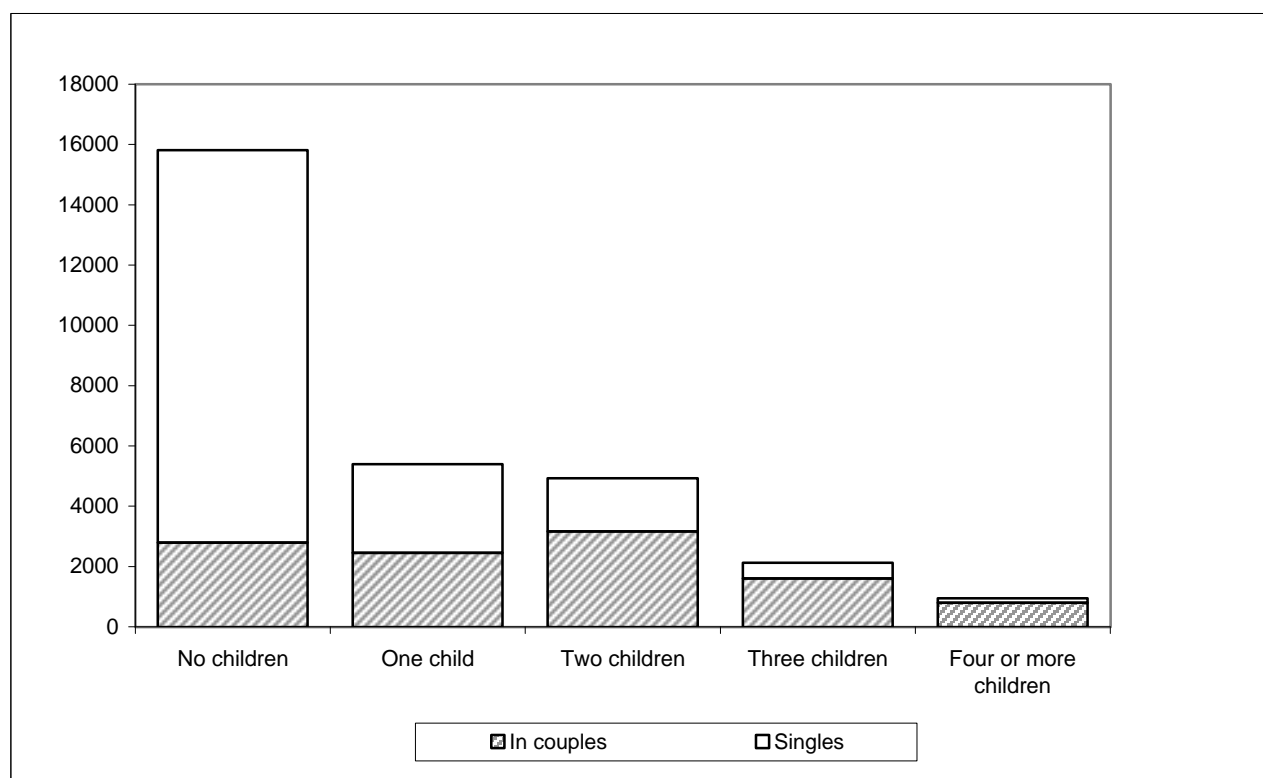
<sup>2</sup> Disability premium in Housing benefit or Council tax benefit, plus Fast-Track entrants.

**Table 3.1 : Family type and gender of recipients, by weekly amount of award.***United Kingdom*

	All cases	Weekly amount of award						
		Under £20.00	£20.00 - £39.99	£40.00 - £59.99	£60.00 - £79.99	£80.00 - £99.99	£100.00 - £119.99	£120.00 and over
<b>With and without children</b>								
<b>All recipients</b>	29,201	2,318	5,779	7,527	2,568	2,721	3,080	5,208
Male	16,580	1,366	3,465	4,233	1,695	1,729	1,358	2,734
Female	12,621	952	2,314	3,294	873	992	1,722	2,474
<b>In couples</b>	10,810	549	1,064	1,273	1,540	1,995	1,430	2,959
Male	8,816	365	775	973	1,231	1,670	1,221	2,581
Female	1,994	184	289	300	309	325	209	378
<b>Singles</b>	18,391	1,769	4,715	6,254	1,028	726	1,650	2,249
Male	7,764	1,001	2,690	3,260	464	59	137	153
Female	10,627	768	2,025	2,994	564	667	1,513	2,096
<b>With children</b>								
<b>All recipients</b>	13,387	298	667	949	1,398	4,867		5,208
Male	7,127	172	431	629	837	2,324		2,734
Female	6,260	126	236	320	561	2,543		2,474
<b>In couples</b>	8,015	263	575	746		3,472		2,959
Male	6,663	164	417	590		2,911		2,581
Female	1,352	99	158	156		561		378
<b>Singles</b>	5,372	35	92	203		2,793		2,249
Male	464	8	14	39		250		153
Female	4,908	27	78	164		2,543		2,096
<b>Without children</b>								
<b>All recipients</b>	15,814	2,020	5,112	6,578	1,170	934		-
Male	9,453	1,194	3,034	3,604	858	763		-
Female	6,361	826	2,078	2,974	312	171		-
<b>In couples</b>	2,795	286	489	527		1,493		-
Male	2,153	201	358	383		1,211		-
Female	642	85	131	144		282		-
<b>Singles</b>	13,019	1,734	4,623	6,051		611		-
Male	7,300	993	2,676	3,221		410		-
Female	5,719	741	1,947	2,830		201		-

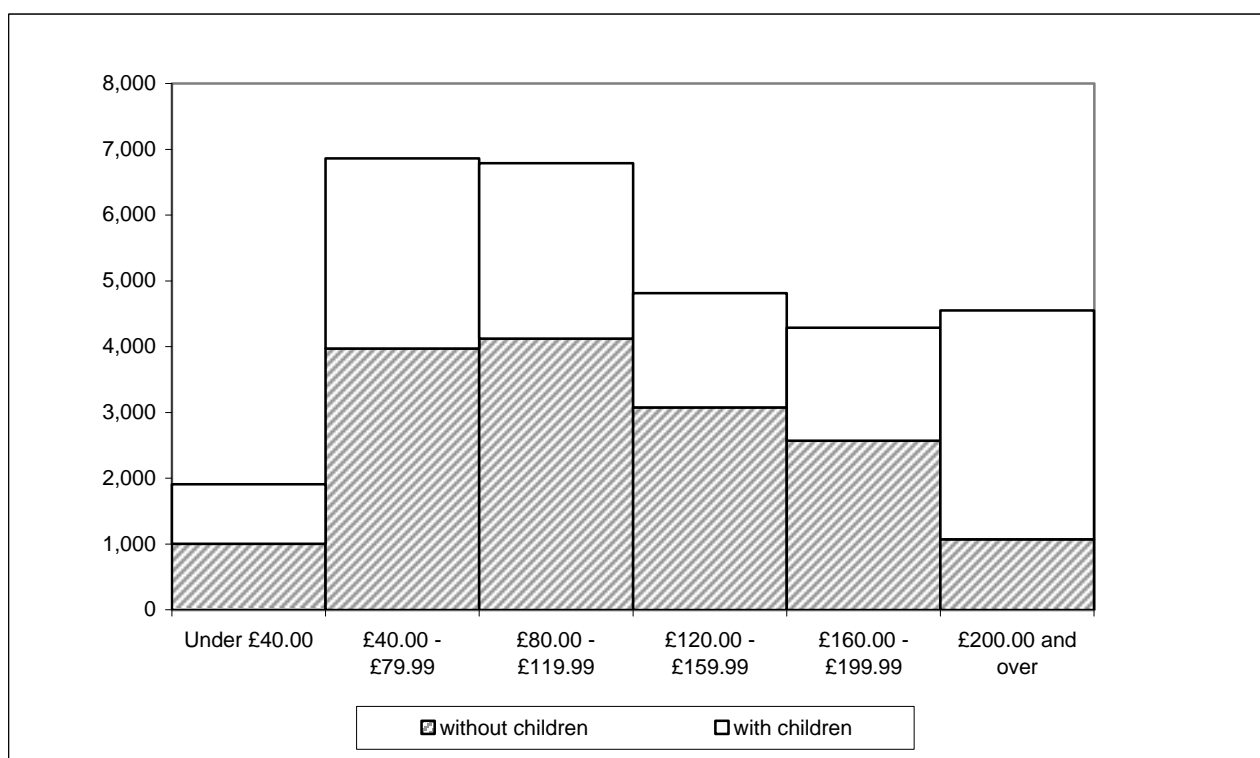
**Table 3.2 : Family size and type of recipients, by weekly amount of award.***United Kingdom*

	All cases	Weekly amount of award							Average award £ per week
		Under £20.00	£20.00 - £39.99	£40.00 - £59.99	£60.00 - £79.99	£80.00 - £99.99	£100.00 - £119.99	£120.00 and over	
<b>All recipients</b>	29,201	2,318	5,779	7,527	2,568	2,721	3,080	5,208	72.93
No children	15,814	2,020	5,112	6,578	1,170	929	5	-	42.60
One child	5,394	154	357	518	777	975	2,024	589	89.30
Two children	4,928	112	252	331	474	627	748	2,384	107.84
Three children	2,119	32	58	90	126	156	248	1,417	132.39
Four or more children	946								
<b>In couples</b>	10,810	549	1,064	1,273	1,540	1,995	1,430	2,959	92.13
No children	2,795	286	489	527	1,003	943	5	-	59.20
One child	2,453	127	277	359					
Two or more children	5,562	136	298	387	537	652	801	2,751	115.02
<b>Singles</b>	18,391	1,769	4,715	6,254	1,028	726	1,650	2,249	61.64
No children	13,019	1,734	4,623	6,051	944	561	-	-	39.03
One child	2,941	27	80	159					
Two or more children	2,431	8	12	44	84	165	250	1,868	137.57

**Chart 5 : Recipients by number of children in family, and by family type.**

**Table 4.1 : Gross weekly earnings of recipients, by family type.***United Kingdom*

	All cases	Gross weekly earnings of recipients						Average gross earnings £ per week
		Under £40.00	£40.00 - £79.99	£80.00 - £119.99	£120.00 - £159.99	£160.00 - £199.99	£200.00 and over	
<b>All recipients</b>	29,201	1,906	6,860	6,786	4,811	4,287	4,551	128.15
In couples	10,810	1,089	2,346	1,878	1,288	1,473	2,736	139.63
Singles	18,391	817	4,514	4,908	3,523	2,814	1,815	121.41
<b>With children</b>	13,387	904	2,889	2,665	1,734	1,716	3,479	144.95
In couples	8,015	673	1,603	1,281	933	1,113	2,412	150.97
Singles	5,372	231	1,286	1,384	801	603	1,067	135.96
<b>Without children</b>	15,814	1,002	3,971	4,121	3,077	2,571	1,072	113.94
In couples	2,795	416	743	597	355	360	324	107.12
Singles	13,019	586	3,228	3,524	2,722	2,211	748	115.40

**Chart 6 : Recipients by gross weekly earnings, and by whether with children.**

**Table 4.2 : Recipients whose family incomes include social security benefits which are brought to account, by family type.**

*United Kingdom*

	All recipients	In couples		Singles
		To DPTC recipient	To partner only	
<b>Pensions:</b>				
Retirement pension	254	42	165	47
Widow's benefit	135	-	-	135
War pension	44	29	9	6
<b>Unemployment related benefits:</b>				
Jobseeker's allowance	52	-	52	-
<b>Sickness and disability benefits:</b>				
Incapacity benefit	786	-	786	-
Severe disablement allowance	301	-	301	-
Industrial injuries disablement benefit	627	385	68	184
War disablement pension	158	113	16	29
<b>Carer benefits:</b>				
Invalid care allowance	1,041	36	952	53
<b>Others:</b>	24	9		15

Note: Certain benefits are excluded as they are not brought to account when calculating the level of award. Examples are Child benefit, Housing benefit, Council tax benefit and Disability living allowance.

**Table 4.3 : Recipients whose families receive other income which is brought to account, by family type.**

*United Kingdom*

	All recipients	In couples	Singles
<b>All cases</b>	1,255	721	534
Benefits in kind	55	28	27
Rent and others	1,202	695	507
<b>With children</b>	615	415	200
Benefits in kind	20	14	6
Rent and others	594	400	194
<b>Without children</b>	640	306	334
Benefits in kind	35	14	21
Rent and others	608	295	313

## Section 5 : Geographical analysis

This section shows the number of recipients in each country of the United Kingdom, and in each Government Office Region, and the average weekly value of the awards. It also shows the number of recipients in each local authority and in each Westminster parliamentary constituency.

All the geographical classifications have been derived from the postcode recorded for the recipient, and used as part of the correspondence address. Each postcode was matched against the 2001 Version A Postcode Directory supplied by the Office for National Statistics. This allocated postcodes in use at April 2001 to local authorities and constituencies according to their definitions as at the end of December 2000.

Not all recipients have complete and accurate postcodes recorded. Each recipient is allocated to a constituency, local authority and region if the postcode, or the element present, is sufficient to do so with certainty, according to the postcode directory.

The remaining recipients are allocated to a local authority in Table 5.3 if the element of the postcode recorded is sufficient to do so with a high probability, even though not with certainty. Other recipients with recorded postcodes starting with "BT" are shown under "Northern Ireland - local authority not known". All these recipients are included in Table 5.4 under "Constituency not known" for the relevant country.

Recipients with no postcode recorded, or for which the recorded postcode neither starts with "BT" nor identifies the local authority with a high probability, are shown as "Not allocated" in all the tables in this section. For presentational convenience, they are included within the subtotals for "Great Britain" here and in Section 1.

Comparisons over time can be affected by boundary changes incorporated into successive versions of the postcode directory.

**Table 5.1 Recipients in each Government Office Region, by employment status and family type.**

	All recipients			Employees			Self employed <sup>1</sup>		
	All	In couples	Singles	All	In couples	Singles	All	In couples	Singles
<b>United Kingdom</b>	29,201	10,810	18,391	24,960	8,169	16,791	4,241	2,641	1,600
<b>Great Britain</b>	27,277	10,098	17,179	23,321	7,660	15,661	3,956	2,438	1,518
North East	1,774	718	1,056	1,502	541	961	272	177	95
North West	4,459	1,614	2,845	3,773	1,180	2,593	686	434	252
Yorkshire and the Humber	2,824	1,147	1,677	2,418	893	1,525	406	254	152
East Midlands	2,024	884	1,140	1,722	679	1,043	302	205	97
West Midlands	2,742	1,079	1,663	2,382	838	1,544	360	241	119
Eastern	1,734	631	1,103	1,470	474	996	264	157	107
London	1,557	447	1,110	1,376	356	1,020	181	91	90
South East	2,421	813	1,608	2,062	605	1,457	359	208	151
South West	2,589	1,005	1,584	2,121	718	1,403	468	287	181
Wales	2,362	944	1,418	1,978	726	1,252	384	218	166
Scotland	2,773	812	1,961	2,503	646	1,857	270	166	104
Northern Ireland	1,924	712	1,212	1,639	509	1,130	285	203	82
Not allocated	18	4	14	14	4	10	4	-	4

**Table 5.2 Average weekly award for recipients in each Government Office Region, by employment status and family type.***£ per week*

	All recipients			Employees			Self employed <sup>1</sup>		
	All	In couples	Singles	All	In couples	Singles	All	In couples	Singles
<b>United Kingdom</b>	72.93	92.13	61.64	68.12	84.71	60.04	101.24	115.08	78.39
<b>Great Britain</b>	72.38	91.24	61.30	67.68	84.13	59.63	100.09	113.57	78.46
North East	72.15	87.70	61.58	67.97	81.83	60.17	95.23	105.64	75.83
North West	76.57	95.58	65.79	71.84	88.18	64.41	102.60	115.71	80.02
Yorkshire and The Humber	73.77	91.28	61.79	84.16	84.16	60.06	102.41	116.33	79.14
East Midlands	75.04	94.67	59.82	70.23	88.32	58.45	102.47	115.67	74.57
West Midlands	71.73	89.69	60.07	67.20	83.00	58.62	101.69	112.97	78.85
Eastern	70.69	92.56	58.17	65.07	83.86	56.13	101.96	118.85	77.19
London	67.49	90.04	58.40	64.12	84.37	57.05	93.12	112.23	73.79
South East	67.37	89.96	55.96	62.12	81.39	54.11	97.57	114.86	73.75
South West	69.83	91.49	56.08	63.40	83.30	53.21	98.98	111.97	78.37
Wales	76.61	92.20	66.23	72.28	86.20	64.21	98.91	112.20	81.47
Scotland	70.16	83.51	64.63	66.86	76.93	63.35	100.73	109.11	87.36
Northern Ireland	80.67	104.83	66.48	74.34	93.48	65.72	117.11	133.30	77.02

1. Recipient has self employment income source and no source of income as an employee

**Table 5.3 : Recipients in each local authority.**

<b>Local authority</b>	<b>All cases</b>	<b>Local authority</b>	<b>All cases</b>
<b>UNITED KINGDOM</b>	<b>29,201</b>	<b>Cumbria</b>	<b>268</b>
<b>GREAT BRITAIN</b>	<b>27,277</b>	Allerdale	38
<b>ENGLAND</b>	<b>22,124</b>	Barrow-in-Furness	67
<b>NORTH EAST</b>	<b>1,774</b>	Carlisle	54
<b>Darlington UA</b>	58	Copeland	29
<b>Hartlepool UA</b>	81	Eden	28
<b>Middlesbrough UA</b>	81	South Lakeland	52
<b>Redcar and Cleveland UA</b>	89	<b>Greater Manchester (Met County)</b>	<b>1,775</b>
<b>Stockton-on-Tees UA</b>	114	Bolton	259
<b>Durham</b>	<b>364</b>	Bury	139
Chester-le-Street	29	Manchester	259
Derwentshire	67	Oldham	156
Durham	45	Rochdale	145
Easington	100	Salford	138
Sedgefield	71	Stockport	189
Teesdale	11	Tameside	180
Wear Valley	41	Trafford	101
<b>Northumberland</b>	<b>194</b>	Wigan	209
Alnwick	10	<b>Lancashire</b>	<b>700</b>
Berwick-upon-Tweed	16	Burnley	56
Blyth Valley	67	Chorley	63
Castle Morpeth	15	Fylde	40
Tynedale	38	Hyndburn	64
Wansbeck	48	Lancaster	62
<b>Tyne and Wear (Met County)</b>	<b>793</b>	Pendle	67
Gateshead	170	Preston	81
Newcastle-upon-Tyne	151	Ribble Valley	24
North Tyneside	132	Rossendale	58
South Tyneside	115	South Ribble	55
Sunderland	225	West Lancashire	70
<b>NORTH WEST</b>	<b>4,459</b>	Wyre	60
<b>Blackburn with Darwen UA</b>	<b>114</b>	<b>Merseyside (Met County)</b>	<b>1,008</b>
<b>Blackpool UA</b>	<b>118</b>	Knowsley	143
<b>Halton UA</b>	<b>86</b>	Liverpool	335
<b>Warrington UA</b>	<b>85</b>	St Helens	111
<b>Cheshire</b>	<b>305</b>	Sefton	183
Chester	66	Wirral	236
Congleton	38	<b>YORKSHIRE AND THE HUMBER</b>	<b>2,824</b>
Crewe and Nantwich	42	<b>East Riding of Yorkshire UA</b>	<b>111</b>
Ellesmere Port and Neston	46	<b>Kingston-upon-Hull, City of UA</b>	<b>147</b>
Macclesfield	60	<b>North East Lincolnshire UA</b>	<b>99</b>
Vale Royal	53	<b>North Lincolnshire UA</b>	<b>78</b>
		<b>York UA</b>	<b>145</b>

**Table 5.3 : Recipients in each local authority (continued).**

<b>Local authority</b>	<b>All cases</b>	<b>Local authority</b>	<b>All cases</b>
<b>North Yorkshire</b>	270	<b>Lincolnshire</b>	389
Craven	14	Boston	63
Hambleton	43	East Lindsey	125
Harrogate	74	Lincoln	52
Richmondshire	18	North Kesteven	36
Ryedale	6	South Holland	46
Scarborough	93	South Kesteven	43
Selby	22	West Lindsey	24
<b>South Yorkshire (Met County)</b>	809	<b>Northamptonshire</b>	243
Barnsley	163	Corby	32
Doncaster	211	Daventry	22
Rotherham	179	East Northamptonshire	22
Sheffield	256	Kettering	45
		Northampton	75
<b>West Yorkshire (Met County)</b>	1,165	South Northamptonshire	13
Bradford	268	Wellingborough	34
Calderdale	102		
Kirklees	224	<b>Nottinghamshire</b>	387
Leeds	367	Ashfield	69
Wakefield	204	Bassetlaw	56
		Broxtowe	49
<b>EAST MIDLANDS</b>	<b>2,024</b>	Gedling	56
		Mansfield	74
<b>Derby UA</b>	149	Newark and Sherwood	57
<b>Leicester UA</b>	139	Rushcliffe	26
<b>Nottingham UA</b>	150		
<b>Rutland UA</b>	7	<b>WEST MIDLANDS</b>	<b>2,742</b>
<b>Derbyshire</b>	362	<b>Herefordshire, County of UA</b>	101
Amber Valley	55	<b>Stoke-on-Trent UA</b>	186
Bolsover	54	<b>Telford and Wrekin UA</b>	103
Chesterfield	67		
Derbyshire Dales	23	<b>Shropshire</b>	161
Erewash	48	Bridgnorth	18
High Peak	48	North Shropshire	31
North East Derbyshire	37	Oswestry	26
South Derbyshire	30	Shrewsbury and Atcham	61
		South Shropshire	25
<b>Leicestershire</b>	198		
Blaby	41	<b>Staffordshire</b>	398
Charnwood	45	Cannock Chase	57
Harborough	13	East Staffordshire	59
Hinckley and Bosworth	33	Lichfield	36
Melton	13	Newcastle-under-Lyme	74
North West Leicestershire	27	South Staffordshire	43
Oadby and Wigston	26	Stafford	46
		Staffordshire Moorlands	46
		Tamworth	37

**Table 5.3 : Recipients in each local authority (continued).**

<b>Local authority</b>	<b>All cases</b>	<b>Local authority</b>	<b>All cases</b>
<b>Warwickshire</b>	184	<b>Essex</b>	398
North Warwickshire	28	Basildon	48
Nuneaton and Bedworth	57	Braintree	50
Rugby	23	Brentwood	14
Stratford-upon-Avon	34	Castle Point	23
Warwick	42	Chelmsford	42
		Colchester	74
<b>West Midlands (Met County)</b>	1,402	Epping Forest	14
Birmingham	545	Harlow	23
Coventry	155	Maldon	12
Dudley	155	Rochford	16
Sandwell	209	Tendring	69
Solihull	82	Uttlesford	13
Walsall	118		
Wolverhampton	138	<b>Hertfordshire</b>	240
		Broxbourne	16
<b>Worcestershire</b>	207	Dacorum	44
Bromsgrove	33	East Hertfordshire	18
Malvern Hills	33	Hertsmere	19
Redditch	44	North Hertfordshire	27
Worcester	28	St. Albans	30
Wychavon	32	Stevenage	27
Wyre Forest	37	Three Rivers	17
		Watford	18
		Welwyn-Hatfield	24
<b>EAST OF ENGLAND</b>	<b>1,734</b>		
		<b>Norfolk</b>	341
<b>Luton UA</b>	59	Breckland	56
<b>Peterborough UA</b>	86	Broadland	37
<b>Southend-on-Sea UA</b>	33	Great Yarmouth	53
<b>Thurrock UA</b>	38	King's Lynn and West Norfolk	61
		North Norfolk	40
<b>Bedfordshire</b>	111	Norwich	60
Bedford	43	South Norfolk	34
Mid Bedfordshire	35		
South Bedfordshire	33	<b>Suffolk</b>	247
		Babergh	25
<b>Cambridgeshire</b>	181	Forest Heath	11
Cambridge	32	Ipswich	65
East Cambridgeshire	16	Mid Suffolk	30
Fenland	46	St. Edmundsbury	29
Huntingdonshire	42	Suffolk Coastal	31
South Cambridgeshire	45	Waveney	56

**Table 5.3 : Recipients in each local authority (continued).I**

<b>Local authority</b>	<b>All cases</b>	<b>Local authority</b>	<b>All cases</b>
<b>LONDON</b>	<b>1,557</b>	<b>SOUTH EAST</b>	<b>2,421</b>
<b>Inner London</b>	570	<b>Bracknell Forest UA</b>	21
<b>Inner London - West</b>	173	<b>Brighton and Hove UA</b>	136
Camden	39	<b>Isle of Wight UA</b>	73
Hammersmith and Fulham	29	<b>Medway UA</b>	87
Kensington and Chelsea	28	<b>Milton Keynes UA</b>	93
Wandsworth	46	<b>Portsmouth UA</b>	66
Westminster and City of London	31	<b>Reading UA</b>	39
<b>Inner London - East</b>	397	<b>Slough UA</b>	18
Hackney	51	<b>Southampton UA</b>	88
Haringey	24	<b>West Berkshire UA</b>	26
Islington	45	<b>Windsor and Maidenhead UA</b>	19
Lambeth	54	<b>Wokingham UA</b>	19
Lewisham	68	<b>Buckinghamshire</b>	110
Newham	70	Aylesbury Vale	40
Southwark	55	Chiltern	13
Tower Hamlets	30	South Bucks	9
		Wycombe	48
<b>Outer London</b>	987	<b>East Sussex</b>	173
<b>Outer London - East and North East</b>	380	Eastbourne	40
Barking and Dagenham	58	Hastings	44
Bexley	54	Lewes	28
Enfield	46	Rother	29
Greenwich	54	Wealden	32
Havering	55	<b>Hampshire</b>	403
Redbridge	49	Basingstoke and Deane	44
Waltham Forest	64	East Hampshire	29
<b>Outer London - South</b>	244	Eastleigh	35
Bromley	51	Fareham	33
Croydon	94	Gosport	37
Kingston-upon-Thames	15	Hart	27
Merton	34	Havant	60
Sutton	50	New Forest	49
<b>Outer London - West and North West</b>	363	Rushmoor	21
Barnet	62	Test Valley	40
Brent	56	Winchester	28
Ealing	56	<b>Kent</b>	425
Harrow	47	Ashford	37
Hillingdon	48	Canterbury	31
Hounslow	75	Dartford	22
Richmond-upon-Thames	19	Dover	38
		Gravesham	24
		Maidstone	38
		Sevenoaks	23
		Shepway	45
		Swale	45
		Thanet	69
		Tonbridge and Malling	27
		Tunbridge Wells	26

**Table 5.3 : Recipients in each local authority (continued).**

<b>Local authority</b>	<b>All cases</b>	<b>Local authority</b>	<b>All cases</b>
<b>Oxfordshire</b>	186	<b>Devon</b>	396
Cherwell	48	East Devon	51
Oxford	38	Exeter	54
South Oxfordshire	36	Mid Devon	31
Vale of White Horse	36	North Devon	59
West Oxfordshire	28	South Hams	53
		Teignbridge	78
<b>Surrey</b>	204	Torridge	47
Elmbridge	26	West Devon	23
Epsom and Ewell	13		
Guildford	16	<b>Dorset</b>	187
Mole Valley	28	Christchurch	15
Reigate and Banstead	33	East Dorset	35
Runnymede	19	North Dorset	33
Spelthorne	12	Purbeck	21
Surrey Heath	16	West Dorset	43
Tandridge	12	Weymouth and Portland	40
Waverley	16		
Woking	13	<b>Gloucestershire</b>	205
		Cheltenham	40
<b>West Sussex</b>	235	Cotswold	16
Adur	26	Forest of Dean	30
Arun	52	Gloucester	51
Chichester	37	Stroud	38
Crawley	28	Tewkesbury	30
Horsham	21		
Mid Sussex	39	<b>Somerset</b>	242
Worthing	32	Mendip	41
		Sedgemoor	63
<b>SOUTH WEST</b>	<b>2,589</b>	South Somerset	70
		Taunton Deane	50
<b>Bath and North East Somerset UA</b>	66	West Somerset	18
<b>Bournemouth UA</b>	131		
<b>Bristol, City of UA</b>	175	<b>Wiltshire</b>	120
<b>North Somerset UA</b>	73	Kennet	20
<b>Plymouth UA</b>	258	North Wiltshire	31
<b>Poole UA</b>	53	Salisbury	37
<b>South Gloucestershire UA</b>	90	South Wiltshire	32
<b>Swindon UA</b>	74		
<b>Torbay UA</b>	131		
<b>Cornwall, and the Isles of Scilly</b>	388		
Caradon	58		
Carrick	56		
Kerrier	80		
North Cornwall	58		
Penwith and Isles of Scilly	64		
Restormel	72		

**Table 5.3 : Recipients in each local authority (continued).**

<b>Local authority</b>	<b>All cases</b>	<b>Local authority</b>	<b>All cases</b>
<b>WALES</b>	<b>2,362</b>	Moray	35
Blaenau Gwent	110	North Ayrshire	66
Bridgend	100	North Lanarkshire	290
Caerphilly	202	Orkney Islands	13
Cardiff	154	Perth and Kinross	75
Carmarthenshire	127	Renfrewshire	123
Ceredigion	61	Scottish Borders, The	66
Conwy	72	Shetland Islands	6
Denbighshire	71	South Ayrshire	57
Flintshire	101	South Lanarkshire	197
Gwynedd	85	Stirling	43
Isle of Anglesey	67	West Dunbartonshire	54
Merthyr Tydfil	92	West Lothian	124
Monmouthshire	36		
Neath Port Talbot	134	<b>NORTHERN IRELAND</b>	<b>1,924</b>
Newport	84	Antrim	47
Pembrokeshire	137	Ards	50
Powys	97	Armagh	55
Rhondda, Cynon, Taff	213	Ballymena	41
Swansea	161	Ballymoney	32
Torfaen	79	Banbridge	48
Vale of Glamorgan, The	67	Belfast	368
Wrexham	112	Carrickfergus	25
		Castlereagh	68
<b>SCOTLAND</b>	<b>2,773</b>	Coleraine	36
Aberdeen City	74	Cookstown	48
Aberdeenshire	66	Craigavon	113
Angus	47	Derry	119
Argyll and Bute	31	Down	75
Clackmannanshire	22	Dungannon	67
Dumfries and Galloway	71	Fermanagh	50
Dundee City	91	Larne	25
East Ayrshire	65	Limavady	42
East Dunbartonshire	44	Lisburn	133
East Lothian	48	Magherafelt	49
East Renfrewshire	35	Moyle	18
Edinburgh, City of	207	Newry and Mourne	99
Eilean Siar (Western Isles)	16	Newtonabbey	80
Falkirk	83	North Down	68
Fife	178	Omagh	56
Glasgow City	330	Strabane	82
Highland	118	Northern Ireland - local authority not known	30
Inverclyde	49		
Midlothian	49	Not allocated	18

**Table 5.4 : Recipients in each parliamentary constituency.**

<b>Parliamentary constituency</b>	<b>All cases</b>	<b>Parliamentary constituency</b>	<b>All cases</b>
<b>UNITED KINGDOM</b>	<b>29,201</b>	Bolton South East	97
		Bolton West	57
<b>GREAT BRITAIN</b>	<b>27,277</b>	Bootle	84
		Boston and Skegness	107
<b>ENGLAND</b>	<b>22,124</b>	Bosworth	32
		Bournemouth East	69
Aldershot	44	Bournemouth West	62
Aldridge - Brownhills	35	Bracknell	20
Altrincham and Sale West	30	Bradford North	63
Amber Valley	46	Bradford South	62
Arundel and South Downs	17	Bradford West	52
Ashfield	59	Braintree	36
Ashford	37	Brent East	24
Ashton under Lyne	87	Brent North	13
Aylesbury	27	Brent South	19
Banbury	41	Brentford and Isleworth	38
Barking	29	Brentwood and Ongar	16
Barnsley Central	52	Bridgwater	62
Barnsley East and Mexborough	74	Brigg and Goole	42
Barnsley West and Penistone	59	Brighton, Kemptown	58
Barrow and Furness	76	Brighton, Pavilion	41
Basildon	37	Bristol East	40
Basingstoke	34	Bristol North West	59
Bassetlaw	57	Bristol South	51
Bath	41	Bristol West	31
Batley and Spen	51	Bromley and Chislehurst	12
Battersea	20	Bromsgrove	33
Beaconsfield	17	Broxbourne	16
Beckenham	19	Broxtowe	44
Bedford	31	Buckingham	18
Berwick-upon-Tweed	28	Burnley	56
Bethnal Green and Bow	18	Burton	57
Beverley and Holderness	42	Bury North	60
Bexhill and Battle	31	Bury South	79
Bexleyheath and Crayford	25	Bury St. Edmunds	37
Billericay	21	Calder Valley	41
Birkenhead	78	Camberwell and Peckham	24
Birmingham, Edgbaston	35	Cambridge	27
Birmingham, Erdington	80	Cannock Chase	59
Birmingham, Hall Green	49	Canterbury	23
Birmingham, Hodge Hill	57	Carlisle	45
Birmingham, Ladywood	46	Carshalton and Wallington	33
Birmingham, Northfield	40	Castle Point	23
Birmingham, Perry Barr	44	Central Suffolk and North Ipswich	33
Birmingham, Selly Oak	47	Charnwood	30
Birmingham, Sparkbrook and Small Heath	67	Chatham and Aylesford	32
Birmingham, Yardley	40	Cheadle	55
Bishop Auckland	52	Cheltenham	35
Blaby	31	Chesham and Amersham	14
Blackburn	88	Chesterfield	60
Blackpool North and Fleetwood	65	Chester, City of	48
Blackpool South	85	Chichester	34
Blaydon	56	Chingford and Woodford Green	23
Blyth Valley	67	Chipping Barnet	22
Bognor Regis and Littlehampton	41	Chorley	63
Bolsover	56	Christchurch	39
Bolton North East	105	Cities of London and Westminster	11

**Table 5.4 : Recipients in each parliamentary constituency (continued).**

<b>Parliamentary constituency</b>	<b>All cases</b>	<b>Parliamentary constituency</b>	<b>All cases</b>
Cleethorpes	51	Esher and Walton	25
Colchester	50	Exeter	54
Colne Valley	56	Falmouth and Camborne	85
Congleton	38	Fareham	32
Copeland	29	Faversham and Mid Kent	22
Corby	41	Feltham and Heston	37
Cotswold	16	Finchley and Golders Green	22
Coventry North East	59	Folkestone and Hythe	45
Coventry North West	64	Forest of Dean	33
Coventry South	32	Fylde	54
Crawley	28	Gainsborough	24
Crewe and Nantwich	41	Gateshead East and Washington West	63
Crosby	30	Gedling	45
Croydon Central	33	Gillingham	32
Croydon North	36	Gloucester	51
Croydon South	25	Gosport	38
Dagenham	29	Grantham and Stamford	39
Darlington	52	Gravesham	24
Dartford	23	Great Grimsby	53
Daventry	27	Great Yarmouth	53
Denton and Reddish	76	Greenwich and Woolwich	18
Derby North	62	Guildford	12
Derby South	70	Hackney North and Stoke Newington	18
Devizes	38	Hackney South and Shoreditch	33
Dewsbury	49	Halesowen and Rowley Regis	47
Don Valley	50	Halifax	61
Doncaster Central	72	Haltemprice and Howden	21
Doncaster North	67	Halton	61
Dover	34	Hammersmith and Fulham	15
Dudley North	50	Hampstead and Highgate	10
Dudley South	51	Harborough	32
Dulwich and West Norwood	23	Harlow	23
Durham,. City of	45	Harrogate and Knaresborough	48
Ealing North	19	Harrow East	22
Ealing Southall	27	Harrow West	25
Ealing, Acton and Shepherd's Bush	24	Hartlepool	81
Easington	91	Harwich	59
East Devon	31	Hastings and Rye	44
East Ham	34	Havant	50
East Hampshire	30	Hayes and Harlington	20
East Surrey	20	Hazel Grove	50
East Worthing and Shoreham	36	Hemel Hempstead	33
East Yorkshire	32	Hemsworth	66
Eastbourne	42	Hendon	18
Eastleigh	33	Henley	19
Eccles	47	Hereford	56
Eddisbury	49	Hertford and Stortford	15
Edmonton	20	Hertsmere	19
Ellesmere Port and Neston	47	Hexham	42
Elmet	35	Heywood and Middleton	58
Eltham	22	High Peak	51
Enfield North	16	Hitchin and Harpenden	17
Enfield, Southgate	10	Holborn and St Pancras	29
Epping Forest	12	Hornchurch	19
Epsom and Ewell	22	Hornsey and Wood Green	14
Erewash	46	Horsham	19
Erith and Thamesmead	28	Houghton and Washington East	55

**Table 5.4 : Recipients in each parliamentary constituency (continued).**

<b>Parliamentary constituency</b>	<b>All cases</b>	<b>Parliamentary constituency</b>	<b>All cases</b>
Hove	44	Manchester, Withington	40
Huddersfield	52	Mansfield	65
Huntingdon	32	Medway	32
Hyndburn	70	Meriden	50
Ilford North	23	Mid Bedfordshire	23
Ilford South	19	Mid Dorset and North Poole	34
Ipswich	52	Mid Norfolk	36
Isle of Wight	73	Mid Sussex	32
Islington North	26	Mid Worcestershire	26
Islington South and Finsbury	19	Middlesbrough	54
Jarrow	82	Middlesbrough South and East Cleveland	54
Keighley	50	Milton Keynes North East	39
Kensington and Chelsea	10	Milton Keynes South West	54
Kettering	48	Mitcham and Morden	22
Kingston and Surbiton	13	Mole Valley	24
Kingston upon Hull East	55	Morecambe and Lunesdale	44
Kingston upon Hull North	53	Morley and Rothwell	62
Kingston upon Hull West and Hessle	43	New Forest East	25
Kingswood	50	New Forest West	24
Knowsley North and Sefton East	91	Newark	33
Knowsley South	83	Newbury	18
Lancaster and Wyre	45	Newcastle upon Tyne Central	44
Leeds Central	53	Newcastle upon Tyne East and Wallsend	46
Leeds East	44	Newcastle upon Tyne North	59
Leeds North East	57	Newcastle-under-Lyme	58
Leeds North West	26	Normanton	48
Leeds West	44	North Cornwall	85
Leicester East	41	North Devon	64
Leicester South	46	North Dorset	43
Leicester West	52	North Durham	62
Leigh	75	North East Bedfordshire	31
Leominster	47	North East Cambridgeshire	51
Lewes	25	North East Derbyshire	42
Lewisham East	26	North East Hampshire	13
Lewisham West	20	North East Hertfordshire	20
Lewisham, Deptford	22	North Essex	34
Leyton and Wanstead	26	North Norfolk	40
Lichfield	33	North Shropshire	57
Lincoln	53	North Southwark and Bermondsey	21
Liverpool, Garston	66	North Swindon	30
Liverpool, Riverside	53	North Thanet	49
Liverpool, Walton	78	North Tyneside	64
Liverpool, Wavertree	67	North Warwickshire	46
Liverpool, West Derby	71	North West Cambridgeshire	35
Loughborough	28	North West Durham	54
Louth and Horncastle	81	North West Hampshire	34
Ludlow	35	North West Leicestershire	27
Luton North	38	North West Norfolk	51
Luton South	22	North Wiltshire	25
Macclesfield	36	Northampton North	39
Maidenhead	19	Northampton South	38
Maidstone and The Weald	24	Northavon	27
Makerfield	69	Norwich North	38
Maldon and East Chelmsford	21	Norwich South	46
Manchester, Blackley	55	Nottingham East	49
Manchester, Central	58	Nottingham North	55
Manchester, Gorton	52	Nottingham South	46

**Table 5.4 : Recipients in each parliamentary constituency (continued).**

<b>Parliamentary constituency</b>	<b>All cases</b>	<b>Parliamentary constituency</b>	<b>All cases</b>
Nuneaton	40	Sherwood	58
Old Bexley and Sidcup	15	Shipley	41
Oldham East and Saddleworth	68	Shrewsbury and Atcham	61
Oldham West and Royton	75	Sittingbourne and Sheppey	38
Orpington	20	Skipton and Ripon	33
Oxford East	35	Sleaford and North Hykeham	35
Oxford West and Abingdon	29	Slough	18
Pendle	67	Solihull	32
Penrith and The Border	43	Somerton and Frome	38
Peterborough	57	South Cambridgeshire	35
Plymouth, Devonport	127	South Derbyshire	47
Plymouth, Sutton	95	South Dorset	49
Pontefract and Castleford	56	South East Cambridgeshire	30
Poole	34	South East Cornwall	71
Poplar and Canning Town	24	South Holland and The Deepings	50
Portsmouth North	42	South Norfolk	30
Portsmouth South	24	South Ribble	49
Preston	68	South Shields	47
Pudsey	46	South Staffordshire	37
Putney	10	South Suffolk	26
Rayleigh	15	South Swindon	44
Reading East	27	South Thanet	32
Reading West	23	South West Bedfordshire	25
Redcar	62	South West Devon	50
Redditch	45	South West Hertfordshire	23
Regent's Park and Kensington North	38	South West Norfolk	47
Reigate	18	South West Surrey	15
Ribble Valley	38	Southampton, Itchen	48
Richmond (Yorks)	38	Southampton, Test	34
Richmond Park	11	Southend West	16
Rochdale	76	Southport	38
Rochford and Southend East	21	Spelthorne	12
Romford	17	St Albans	21
Romsey	24	St Helens North	57
Rossendale and Darwen	78	St Helens South	54
Rother Valley	56	St Ives	82
Rotherham	60	Stafford	36
Rugby and Kenilworth	25	Staffordshire Moorlands	42
Ruislip - Northwood	15	Stalybridge and Hyde	67
Runnymede and Weybridge	20	Stevenage	29
Rushcliffe	26	Stockport	58
Rutland and Melton	25	Stockton North	64
Ryedale	39	Stockton South	50
Saffron Walden	27	Stoke-on-Trent Central	54
Salford	46	Stoke-on-Trent North	49
Salisbury	35	Stoke-on-Trent South	86
Scarborough and Whitby	79	Stone	31
Scunthorpe	42	Stourbridge	38
Sedgefield	66	Stratford-on-Avon	33
Selby	27	Streatham	21
Sevenoaks	17	Stretford and Urmston	65
Sheffield Central	44	Stroud	38
Sheffield, Attercliffe	46	Suffolk Coastal	27
Sheffield, Brightside	58	Sunderland North	75
Sheffield, Hallam	12	Sunderland South	80
Sheffield, Heeley	47	Surrey Heath	20
Sheffield, Hillsborough	49	Sutton and Cheam	17

**Table 5.4 : Recipients in each parliamentary constituency (continued).**

<b>Parliamentary constituency</b>	<b>All cases</b>	<b>Parliamentary constituency</b>	<b>All cases</b>
Sutton Coldfield	40	Wimbledon	12
Tamworth	42	Winchester	28
Tatton	31	Windsor	5
Taunton	52	Wirral South	38
Teignbridge	68	Wirral West	33
Telford	64	Witney	29
Tewkesbury	32	Woking	14
Thurrock	28	Wokingham	11
Tiverton and Honiton	46	Wolverhampton North East	59
Tonbridge and Malling	23	Wolverhampton South East	47
Tooting	16	Wolverhampton South West	32
Torbay	100	Woodspring	25
Torridge and West Devon	70	Worcester	28
Totnes	80	Workington	32
Tottenham	10	Worsley	66
Truro and St. Austell	65	Worthing West	28
Tunbridge Wells	25	Wrekin, The	47
Twickenham	12	Wycombe	34
Tyne Bridge	68	Wyre Forest	36
Tynemouth	54	Wythenshawe and Sale East	60
Upminster	19	Yeovil	52
Uxbridge	13	York, City of	90
Vale of York	61	England - constituency not known	5
Vauxhall	20		
Wakefield	50		
Wallasey	87	<b>WALES</b>	<b>2,362</b>
Walsall North	57		
Walsall South	26	Aberavon	73
Walthamstow	22	Alyn and Deeside	59
Wansbeck	57	Blaenau Gwent	110
Wansdyke	32	Brecon and Radnorshire	47
Wantage	33	Bridgend	57
Warley	54	Caernarfon	46
Warrington North	54	Caerphilly	110
Warrington South	31	Cardiff Central	39
Warwick and Leamington	40	Cardiff North	21
Watford	23	Cardiff South and Penarth	54
Waveney	50	Cardiff West	45
Wealden	24	Carmarthen East and Dinefwr	48
Weaver Vale	40	Carmarthen West and South Pembrokeshire	81
Wellingborough	47	Ceredigion	61
Wells	38	Clwyd South	55
Welwyn Hatfield	24	Clwyd West	39
Wentworth	63	Conwy	48
West Bromwich East	64	Cynon Valley	76
West Bromwich West	60	Delyn	42
West Chelmsford	30	Gower	44
West Derbyshire	30	Islwyn	74
West Dorset	41	Llanelli	56
West Ham	24	Meirionnydd Nant Conwy	29
West Lancashire	62	Merthyr Tydfil and Rhymney	110
West Suffolk	22	Monmouth	34
West Worcestershire	37	Montgomeryshire	50
Westbury	22	Neath	61
Westmorland and Lonsdale	43	Newport East	42
Weston-super-Mare	48	Newport West	51
Wigan	44	Ogmore	56

**Table 5.4 : Recipients in each parliamentary constituency (continued).**

<b>Parliamentary constituency</b>	<b>All cases</b>	<b>Parliamentary constituency</b>	<b>All cases</b>
Pontypridd	57	Glasgow, Rutherglen	39
Preseli Pembrokeshire	79	Glasgow, Shettleston	47
Rhondda	73	Glasgow, Springburn	37
Swansea East	65	Gordon	19
Swansea West	52	Greenock and Inverclyde	29
Torfaen	72	Hamilton North and Bellshill	53
Vale of Clwyd	66	Hamilton South	57
Vale of Glamorgan	56	Inverness East, Nairn and Lochaber	41
Wrexham	57	Kilmarnock and Loudoun	41
Ynys Mon	67	Kirkcaldy	32
Wales - constituency not known	-	Linlithgow	60
		Livingston	64
		Midlothian	40
<b>SCOTLAND</b>	<b>2,773</b>	Moray	32
		Motherwell and Wishaw	68
Aberdeen Central	25	North East Fife	26
Aberdeen North	37	North Tayside	35
Aberdeen South	12	Ochil	28
Airdrie and Shotts	86	Orkney and Shetland	19
Angus	37	Paisley North	53
Argyll and Bute	25	Paisley South	38
Ayr	35	Perth	49
Banff and Buchan	35	Ross, Skye and Inverness West	48
Caithness, Sutherland and Easter Ross	29	Roxburgh and Berwickshire	39
Carrick, Cumnock and Doon Valley	46	Stirling	38
Central Fife	53	Strathkelvin and Bearsden	35
Clydebank and Milngavie	34	Tweeddale, Ettrick and Lauderdale	36
Clydesdale	59	West Aberdeenshire and Kincardine	15
Coatbridge and Chryston	65	West Renfrewshire	52
Cumbernauld and Kilsyth	33	Western Isles	16
Cunninghame North	35	Scotland - constituency not known	-
Cunninghame South	31		
Dumbarton	35		
Dumfries	39	<b>NORTHERN IRELAND</b>	<b>1,924</b>
Dundee East	39	Belfast East	64
Dundee West	52	Belfast North	124
Dunfermline East	40	Belfast South	98
Dunfermline West	27	Belfast West	183
East Kilbride	36	East Antrim	61
East Lothian	45	East Londonderry	78
Eastwood	35	Fermanagh and South Tyrone	96
Edinburgh Central	36	Foyle	115
Edinburgh East and Musselburgh	44	Lagan Valley	100
Edinburgh North and Leith	36	Mid Ulster	117
Edinburgh South	31	Newry and Armagh	109
Edinburgh West	26	North Antrim	90
Edinburgh, Pentlands	37	North Down	74
Falkirk East	36	South Antrim	92
Falkirk West	47	South Down	116
Galloway and Upper Nithsdale	32	Strangford	76
Glasgow, Anniesland	31	Upper Bann	147
Glasgow, Baillieston	48	West Tyrone	138
Glasgow, Cathcart	29	Northern Ireland - constituency not known	46
Glasgow, Govan	19		
Glasgow, Kelvin	17		
Glasgow, Maryhill	44		
Glasgow, Pollok	49	Not allocated	18

**Table 6.1 : Main qualifying benefit of recipients of awards starting between October 1999 and April 2001, by type of award.**

	<i>United Kingdom</i>	
	<b>All cases</b>	<b>Average award £ per week</b>
<b>All awards</b>		
<b>All qualifying benefits</b>	83,538	72.01
Disability living allowance - higher rate & analogous benefits	35,573	68.74
Disability living allowance - lower rate	17,411	62.90
Severe disablement benefit	5,934	59.77
Disability premium in IS/JSA	11,204	91.08
Incapacity benefit (higher rate short term)	2,774	82.94
Incapacity benefit (long term)	10,433	81.90
Other <sup>1</sup>	209	75.28
<b>New awards <sup>2</sup></b>		
<b>All qualifying benefits</b>	22,118	71.19
Disability living allowance - higher rate & analogous benefits	8,290	64.13
Disability living allowance - lower rate	4,313	64.72
Severe disablement benefit	1,586	61.37
Disability premium in IS/JSA	3,557	91.78
Incapacity benefit (higher rate short term)	1,010	80.95
Incapacity benefit (long term)	3,312	77.03
Other <sup>1</sup>	50	61.33
<b>Renewal awards <sup>3</sup></b>		
<b>All qualifying benefits</b>	56,428	72.76
Disability living allowance - higher rate & analogous benefits	24,688	70.52
Disability living allowance - lower rate	11,936	62.64
Severe disablement benefit	4,102	59.36
Disability premium in IS/JSA	7,196	91.17
Incapacity benefit (higher rate short term)	1,662	84.41
Incapacity benefit (long term)	6,706	84.42
Other <sup>1</sup>	138	81.78
<b>Repeat awards <sup>4</sup></b>		
<b>All qualifying benefits</b>	4,992	67.20
Disability living allowance - higher rate & analogous benefits	2,595	66.47
Disability living allowance - lower rate	1,162	58.89
Severe disablement benefit	246	56.36
Disability premium in IS/JSA	451	84.29
Incapacity benefit (higher rate short term)	102	78.68
Incapacity benefit (long term)	415	80.08
Other <sup>1</sup>	21	65.80

<sup>1</sup>Disability premium in Housing benefit or Council tax benefit, plus Fast-Track entrants.

<sup>2</sup>New awards are those where the recipient has not received DWA or DPTC within the previous 2 years.

<sup>3</sup>Renewal awards are those following on immediately from a previous award, without a break.

<sup>4</sup>Repeat awards are those where the recipient had a previous award but there has been a break between awards of up to 2 years.

**Table 6.2 : Recipients of awards starting between October 1999 and April 2001  
by type of award and family type.**

<i>United Kingdom</i>					
	All Cases	Couples		Singles	
		Male	Female	Male	Female
<b>All awards</b>	83,538	25,607	5,551	22,432	29,948
<b>New awards</b> <sup>1</sup>	22,118	6,539	1,831	5,485	8,263
<b>Renewal awards</b> <sup>2</sup>	56,428	17,694	3,347	15,433	19,954
<b>Repeat awards</b> <sup>3</sup>	4,992	1,374	373	1,514	1,731

<sup>1</sup>New awards are those where the recipient has not received DWA or DPTC within the previous 2 years.

<sup>2</sup>Renewal awards are those following on immediately from a previous award, without a break.

<sup>3</sup>Repeat awards are those where the recipient had a previous award but there has been a break between awards of up to 2 years.

Figures for DWA awards in Great Britain starting between November 1992 and September 1999 appear in the enquiry statistics for October 1999.

**Table 6.3 : Disallowances between October 1999 and April 2001 by reason of disallowance.***United Kingdom*

	<b>Number of disallowances</b>
<b>All disallowances</b>	16,274
<b>All A codes</b>	75
A1 Claimant was not in UK	70
A2 Claimant was not normally living in UK	-
A3 Partner not normally living in UK	-
A4 All claimants earnings from outside UK	
<b>All C codes</b>	170
C1 Claimant's capital exceeds £16,000	135
C2 Claimant and partner's capital exceeds £16,000	25
C3 Failure to provide information about value of claimant and partner's capital	-
C4 Failure to provide information about value of claimant's capital	8
<b>All D codes</b>	3,441
D1 Claimant not doing paid work for an average of 16 hours a week or more	1,158
D2 Claimant not in paid work	1,119
D5 Claimant not engaged in remunerative work in relevant weeks	911
D7 Claimant not normally engaged in paid work	230
D9 Claimant not treated as in paid work - voluntary	-
D11 Claimant not treated as in paid work - charity	-
D13 Claimant working for voluntary body - expenses	-
D15 Claimant could not be treated as in paid work on the information available	21
<b>All E codes</b>	3,414
E1 Claimant's income higher than the level at which DPTC would become payable	3,049
E2 Claimant's entitlement less than the minimum amount of DPTC	74
E3 On the information available the claimant or partner's income was higher then the level at which DPTC would become payable	291
<b>All other codes</b>	
G1 Any disallowance not covered by other categories	259
I DPTC claim made more than 6 weeks before DPTC end date	2,585
J1 Qualifying benefit test not satisfied	4,227
K1 Disability test not satisfied	1,000
L Lapsed claim	32
W Claimant has withdrawn claim	1,046

Figures for DWA disallowances in Great Britain occurring between November 1992 and September 1999 appear in the enquiry statistics for October 1999.

**Table 6.4 : Recipients of renewal and repeat awards starting between October 1999 and April 2001 by disability type and age.**

*United Kingdom*

	All ages	Under 30	30 - 39	40 - 49	50 - 59	60 and over
<b>Renewal awards <sup>1</sup></b>						
Mental disabilities - treatment	4,164	510	1,617	1,391	606	40
Mental disabilities - day to day things	5,273	1,567	1,765	1,261	615	65
Mental disabilities - getting on with people	4,411	968	1,672	1,196	540	35
Fits and comas	439	97	190	101	46	5
Exhaustion and pain	16,059	1,614	5,084	5,377	3,442	542
Seeing	1,676	349	614	440	233	40
Hearing	919	185	327	233	149	25
Communicating	1,575	456	521	355	206	37
Getting around	2,350	231	689	799	525	106
Using your hands	2,494	512	855	711	367	49
Reaching with your arms	348	49	107	100	85	7
<b>Repeat awards <sup>2</sup></b>						
Mental disabilities - treatment	385	58	153	125	49	-
Mental disabilities - day to day things	438	144	148	98	48	-
Mental disabilities - getting on with people	403	95	158	107	43	-
Fits and comas	34	19	10	5	-	-
Exhaustion and pain	1,103	176	348	370	194	15
Seeing	186	57	71	43	15	-
Hearing	100	22	44	23	11	-
Communicating	154	52	60	25	17	-
Getting around	165	31	45	46	43	-
Using your hands	253	75	79	65	34	-
Reaching with your arms	45	15	7	13	10	-

<sup>1</sup>Renewal awards are those following on immediately from a previous award, without a break.

<sup>2</sup>Repeat awards are those where the recipient had a previous award but there has been a break between awards of up to 2 years.

Figures for DWA awards in Great Britain starting between November 1992 and September 1999 appear in the enquiry statistics for October 1999.

Claimants may have one or more type(s) of disability. This table records all declared and confirmed disability types for those claimants who complete form DPTC2 prior to renewal/ repeat awards.

**£5.00**