

---

# **Disabled Person's Tax Credit Statistics**

## **Quarterly Enquiry**

### **United Kingdom April 2000**

---

Contact point for enquiries and requests for further copies:-

Analytical Services Division (S1)  
Inland Revenue  
Room F1 - West Wing  
Somerset House  
London  
WC2R 1LB  
☎ : 020 - 7438 6275  
Fax : 020 - 7438 6764  
E-mail : gp1sed.ir.sh@gtnet.gov.uk

This, and the October 1999 and January 2000 issues, can be found on the Inland Revenue web site : [www.inlandrevenue.gov.uk](http://www.inlandrevenue.gov.uk)

The July 2000 issue is due to be published on the web site on Tuesday 12th December 2000.

#### A NATIONAL STATISTICS PUBLICATION

National Statistics are produced to a high professional standards set out in the National Statistics Code of Practice. They undergo regular quality assurance reviews to ensure that they meet customer needs. They are produced free from any political interference.

For general enquiries about National Statistics, contact the National Statistics Public Enquiry Service on

☎ : 020 - 7533 5888  
minicom : 01633 812399  
E-mail : info@statistics.gov.uk  
Fax : 01633 652747  
Letters : room DG/18, 1 Drummond Gate, LONDON, SW1V 2QQ

You can also find National Statistics on the internet - go to [www.statistics.gov.uk](http://www.statistics.gov.uk)

# Disabled Person's Tax Credit Statistics

## Quarterly Enquiry

### United Kingdom

April 2000

<b>Contents</b>	<b>PAGE</b>
Introduction .....	1
Main findings .....	1
List of tables .....	2
Section 1 : Time series .....	4
Section 2 : Family type .....	7
Section 3 : Amount of award .....	10
Section 4 : Earnings and other income .....	12
Section 5 : Geographical analysis .....	14
Section 6 : Historical DPTC .....	28

## Introduction

Disabled Person's Tax Credit (DPTC) replaced Disability Working Allowance (DWA) from 5th October 1999. It is a tax credit available to people who are working at least sixteen hours a week and who have an illness or disability which puts them at a disadvantage in getting a job.

The tables cover awards current at 30th April 2000. Awards of both DPTC and DWA last for 26 weeks, so only DPTC awards were current at that date. Time series covering both DPTC and DWA are available only for awards made in Great Britain (excluding Northern Ireland).

The figures are based on a 100% scan of awards. They have been compiled four months after the reference date, by which time almost all awards current at the reference date have been processed and entered onto the computer system. The tables cover awards made in the United Kingdom, unless otherwise stated. To ensure that information about individuals is not disclosed, most cells containing less than five cases are shown as '-', and some other cells are bracketed together.

Problems have been discovered with the classification of recipients between employees and self-employed. The publication of figures using this classification has therefore been suspended.

## Main Findings

There were 23,351 DPTC awards current at 30th April 2000, 11 per cent higher than the number of DPTC and DWA awards at 31st January 2000.

The average DPTC award was £70.14 per week.

14,633 awards were to single adults (including lone parents), with an average value of £58.80 per week. 8,718 were to couples with an average value of £89.18 a week.

44 per cent of recipients had children. Their average weekly award was £102.72, compared with £44.60 for recipients with no children.

In 43 per cent of the cases higher rate disability living allowance, or an analogous benefit, was the main qualifying benefit for DPTC. Lower rate disability living allowance was the main qualifying benefit for a further 21 per cent.

For families with children, 59% of DPTC awards were over £100 per week.

The average gross weekly earnings of the main earner was £114.90.

## List of Tables

### Section 1 : Time series

- Table 1.1      DWA/DPTC awards by family type, January 1993 - April 2000.
- Chart 1        DWA/DPTC awards by family type, Great Britain, January 1993 - April 2000.
- Table 1.2      Average DWA/DPTC award by family type, January 1993 - April 2000.
- Chart 2        Average DWA/DPTC award by family type, Great Britain, January 1993 - April 2000.

### Section 2 : Family type

- Table 2.1      Family type and age by sex of recipient.
- Chart 3        Age of recipient and family type.
- Table 2.2      Family type, number and average weekly amount of award.
- Chart 4        Family type.
- Table 2.3      Family type and main qualifying benefit, number and average weekly amount of award.

### Section 3 : Amount of award

- Table 3.1      Family type by weekly amount of award.
- Table 3.2      Family size and type by weekly amount of award.
- Chart 5        Number of children by family type.

**Section 4 : Earnings and other income**

- Table 4.1      Family type by gross weekly earnings of main earner.
- Chart 6        Gross weekly earnings of main earner and family type
- Table 4.2      Other benefits in receipt at the time of application by family type.
- Table 4.3      Other income in receipt at the time of application by family type.

**Section 5 : Geographical analysis**

- Table 5.1      Number of awards by Government Office Region and family type.
- Table 5.2      Average award by Government Office Region and family type.
- Table 5.3      Number of awards by local authority.
- Table 5.4      Number of awards by parliamentary constituency.

**Section 6 : Historical DPTC**

- Table 6.1      Type and main qualifying benefit of all awards starting between October 1999 and April 2000.
- Table 6.2 :     Awards starting between October 1999 and April 2000 by type of award and family type.
- Table 6.3 :     Disallowances between October 1999 and April 2000 by reason of disallowance.
- Table 6.4 :     Renewal and repeat awards starting between October 1999 and April 2000 by disability type and age of claimant.

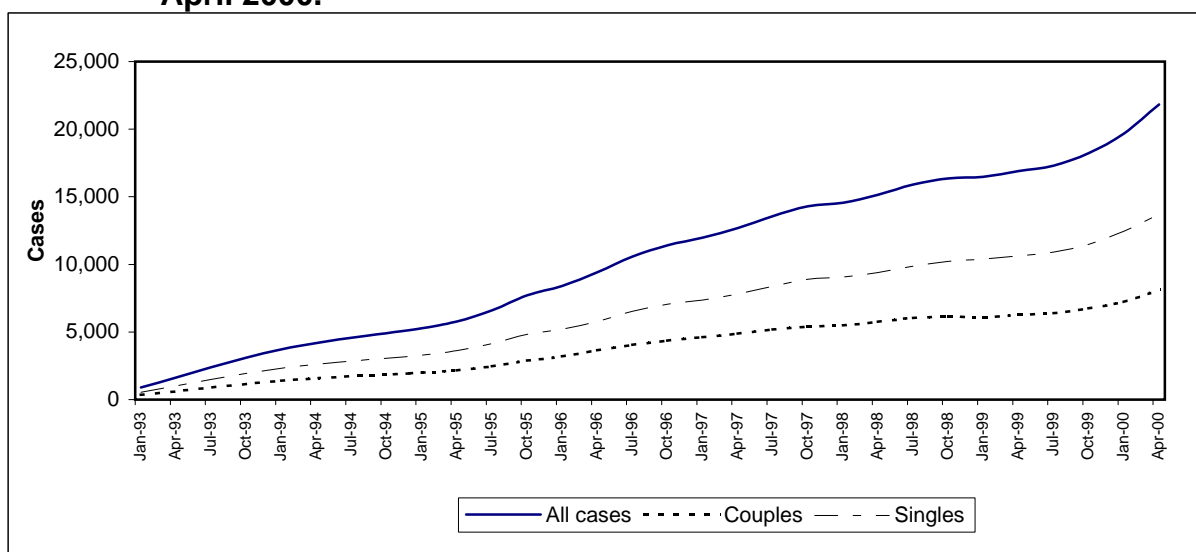
## **Section 1 : Time series**

This section shows the number of awards in Great Britain, and their average weekly value, for each quarter back to January 1993. Figures for the United Kingdom are shown from October 1999.

The figures for January 2000 are slightly different to those published last time, as they account of awards made after the scan for the previous publication and then backdated.

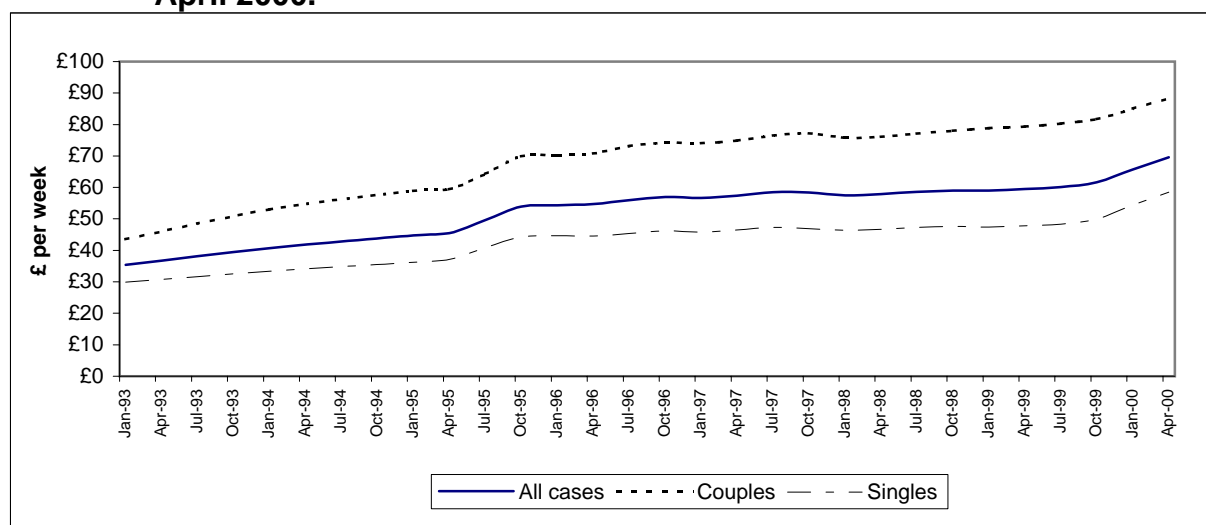
**Table 1.1 : DWA/DPTC awards by family type, January 1993 - April 2000.**

	All cases		Couples		Singles	
	Great Britain	United Kingdom	Great Britain	United Kingdom	Great Britain	United Kingdom
Jan-93	904	-	361	-	543	-
Jan-94	3,722	-	1,392	-	2,330	-
Jan-95	5,277	-	1,990	-	3,287	-
Apr-95	5,782	-	2,152	-	3,630	-
Jul-95	6,615	-	2,465	-	4,150	-
Oct-95	7,719	-	2,899	-	4,820	-
Jan-96	8,406	-	3,186	-	5,220	-
Apr-96	9,416	-	3,638	-	5,778	-
Jul-96	10,577	-	4,049	-	6,528	-
Oct-96	11,409	-	4,359	-	7,050	-
Jan-97	11,979	-	4,620	-	7,359	-
Apr-97	12,689	-	4,881	-	7,808	-
Jul-97	13,575	-	5,191	-	8,384	-
Oct-97	14,306	-	5,405	-	8,901	-
Jan-98	14,564	-	5,500	-	9,064	-
Apr-98	15,145	-	5,753	-	9,392	-
Jul-98	15,910	-	6,040	-	9,870	-
Oct-98	16,353	-	6,125	-	10,228	-
Jan-99	16,483	-	6,093	-	10,390	-
Apr-99	16,904	-	6,263	-	10,641	-
Jul-99	17,305	-	6,400	-	10,905	-
Oct-99	18,222	19,445	6,738	7,207	11,484	12,238
Jan-00	19,678	21,017	7,232	7,740	12,446	13,277
Apr-00	21,836	23,351	8,127	8,718	13,709	14,633

**Chart 1 : DWA/DPTC awards by family type, Great Britain, January 1993 - April 2000.**

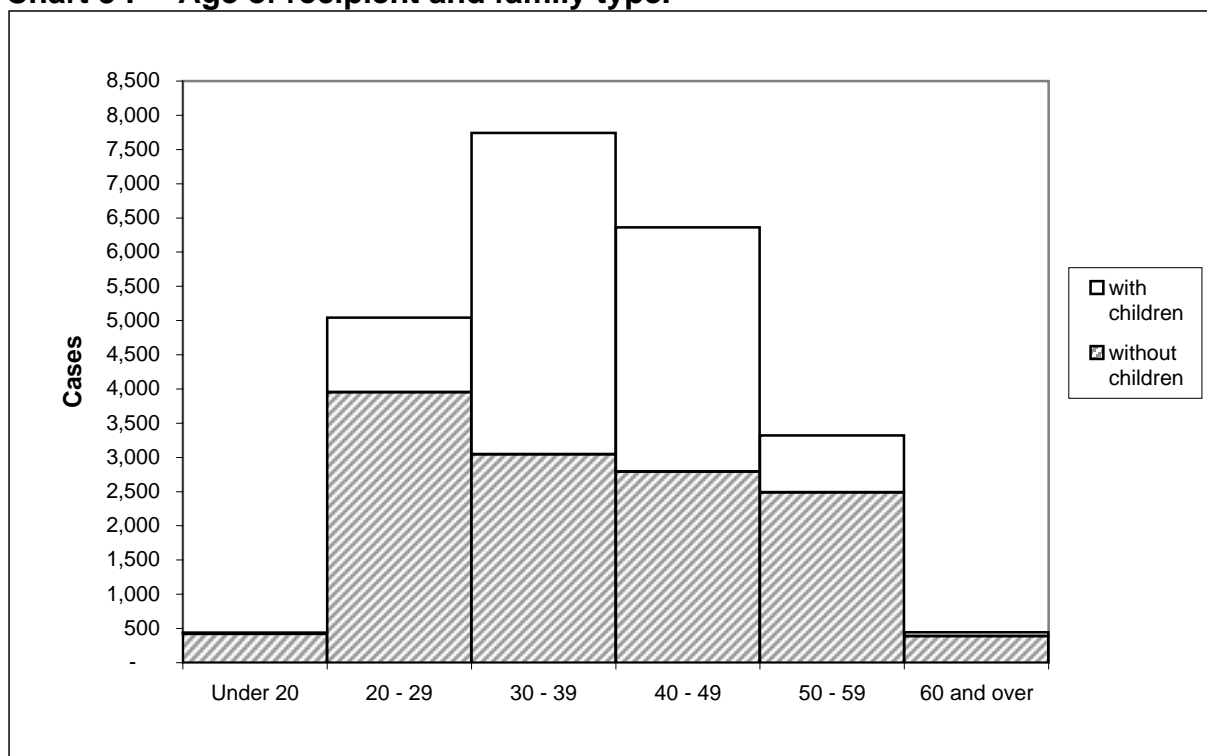
**Table 1.2 : Average DWA/DPTC award by family type, January 1993 - April 2000.**

	<i>£ per week</i>					
	All cases		Couples		Singles	
	Great Britain	United Kingdom	Great Britain	United Kingdom	Great Britain	United Kingdom
Jan-93	35.37	-	43.59	-	29.91	-
Jan-94	40.71	-	53.03	-	33.36	-
Jan-95	44.79	-	58.93	-	36.23	-
Apr-95	45.46	-	59.43	-	37.17	-
Jul-95	49.65	-	64.32	-	40.94	-
Oct-95	53.87	-	69.90	-	44.22	-
Jan-96	54.35	-	70.25	-	44.65	-
Apr-96	54.72	-	70.84	-	44.57	-
Jul-96	55.97	-	73.10	-	45.35	-
Oct-96	56.92	-	74.22	-	46.23	-
Jan-97	56.69	-	74.06	-	45.78	-
Apr-97	57.39	-	74.89	-	46.44	-
Jul-97	58.46	-	76.47	-	47.30	-
Oct-97	58.37	-	77.22	-	46.92	-
Jan-98	57.52	-	75.83	-	46.41	-
Apr-98	57.84	-	76.08	-	46.67	-
Jul-98	58.63	-	77.10	-	47.33	-
Oct-98	58.97	-	77.98	-	47.58	-
Jan-99	59.05	-	78.89	-	47.41	-
Apr-99	59.53	-	79.38	-	47.84	-
Jul-99	60.13	-	80.31	-	48.29	-
Oct-99	61.66	62.09	81.64	82.16	49.94	50.27
Jan-00	65.69	66.21	85.05	85.87	54.43	54.76
Apr-00	69.57	70.14	88.30	89.18	58.46	58.80

**Chart 2 : Average DWA/DPTC award by family type, Great Britain, January 1993 - April 2000.**

**Table 2.1 : Family type and age by sex of recipient.**

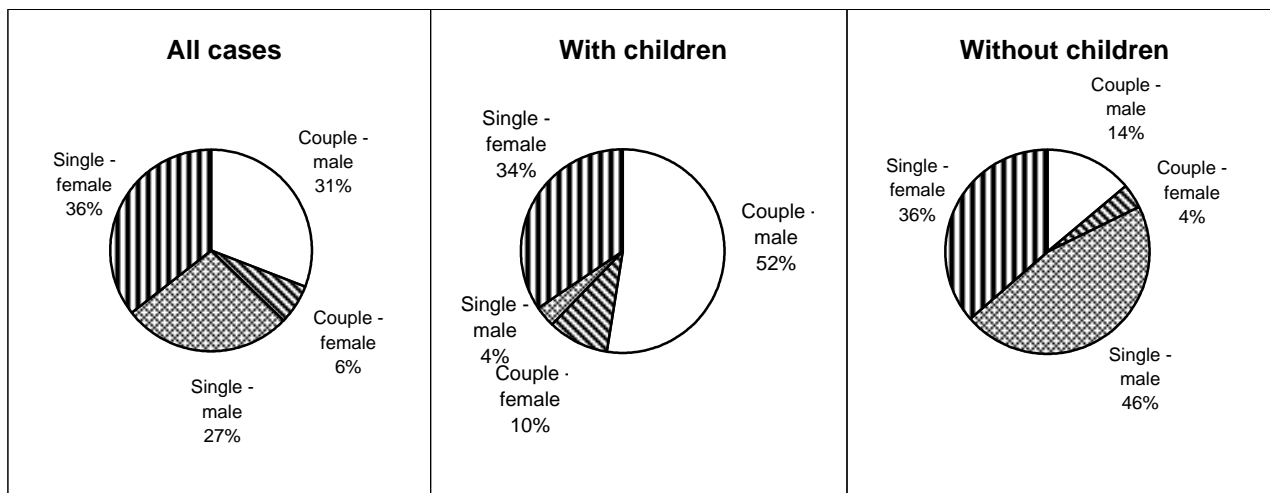
	<i>United Kingdom</i>				
	All cases	Male	%	Female	%
<b>All cases</b>	23,351	13,547	58	9,804	42
Under 20	439	253	58	186	42
20 - 29	5,044	2,778	55	2,266	45
30 - 39	7,743	4,392	57	3,351	43
40 - 49	6,362	3,700	58	2,662	42
50 - 59	3,320	2,029	61	1,291	39
60 and over	443	395	89	48	11
<b>With children</b>	10,263	5,737	56	4,526	44
Under 20	16	5	31	11	69
20 - 29	1,092	475	43	617	57
30 - 39	4,698	2,496	53	2,202	47
40 - 49	3,570	2,098	59	1,472	41
50 - 59	830	611	74	219	26
60 and over	57	52	91	5	9
<b>Without children</b>	13,088	7,810	60	5,278	40
Under 20	423	248	59	175	41
20 - 29	3,952	2,303	58	1,649	42
30 - 39	3,045	1,896	62	1,149	38
40 - 49	2,792	1,602	57	1,190	43
50 - 59	2,490	1,418	57	1,072	43
60 and over	386	343	89	43	11

**Chart 3 : Age of recipient and family type.**

**Table 2.2 : Family type, number and average weekly amount of award.**

<i>United Kingdom</i>		
	<b>All cases</b>	<b>Average award £ per week</b>
<b>All cases</b>	23,351	70.14
Couple - male	7,203	91.65
Couple - female	1,515	77.42
Single - male	6,344	43.96
Single - female	8,289	70.15
<b>With children</b>	10,263	102.72
Couple - male	5,377	101.29
Couple - female	1,005	88.54
Single - male	360	99.65
Single - female	3,521	109.25
<b>Without children</b>	13,088	44.60
Couple - male	1,826	63.26
Couple - female	510	55.51
Single - male	5,984	40.61
Single - female	4,768	41.28

**Chart 4 : Family type.**



**Table 2.3 : Family type and main qualifying benefit, number and average weekly amount of award.**

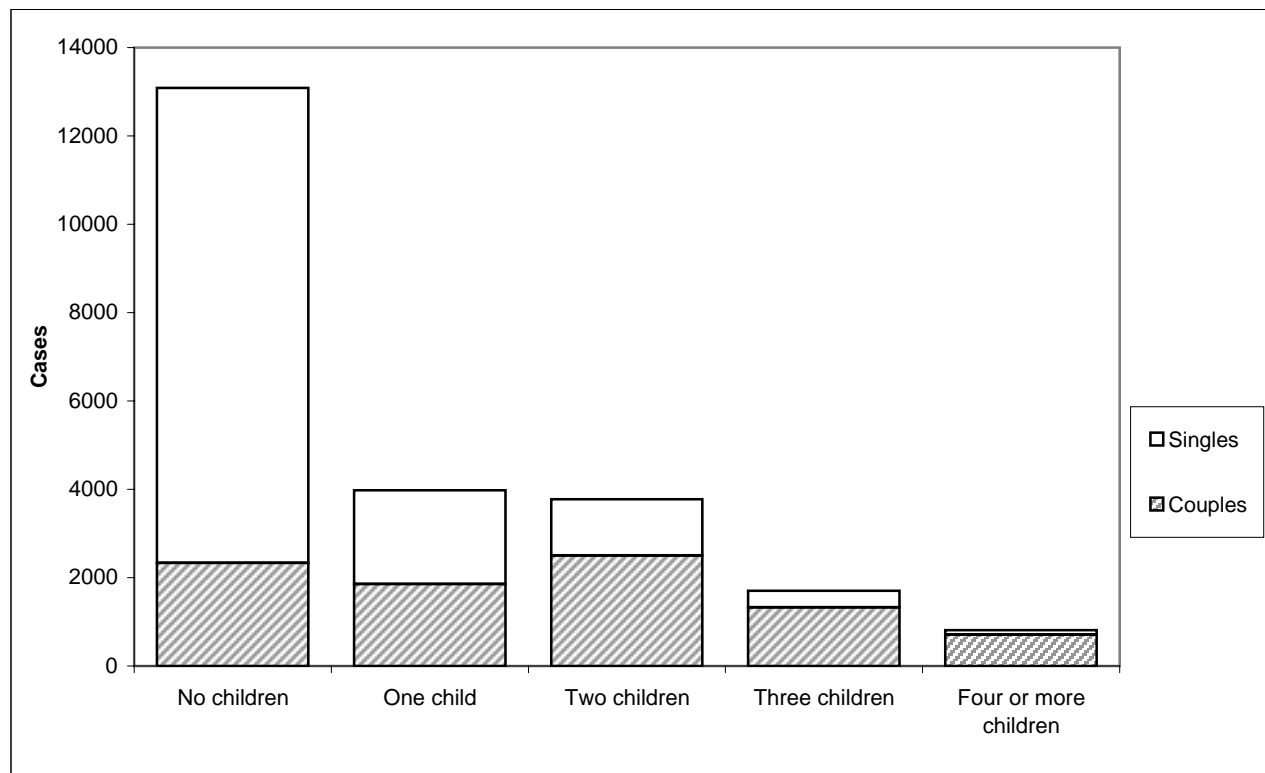
	<i>United Kingdom</i>	
	<b>All cases</b>	<b>Average award £ per week</b>
<b>All cases</b>	23,351	70.14
Higher rate Disability living allowance and analogous benefits	10,099	67.41
Lower rate Disability living allowance	4,870	61.53
Severe disablement benefit	1,670	59.15
Disability premium in Income support/Jobseeker's allowance	3,030	87.72
Disability premium in Housing benefit	35	78.06
Disability premium in Council tax benefit	12	83.29
Incapacity benefit (higher rate short term)	785	78.17
Incapacity benefit (long term)	2,850	79.94
<b>With children</b>	10,263	102.72
Higher rate Disability living allowance and analogous benefits	4,542	96.82
Lower rate Disability living allowance	1,778	97.32
Severe disablement benefit	374	109.62
Disability premium in Income support/Jobseeker's allowance	1,673	117.74
Disability premium in Housing benefit	19	111.25
Disability premium in Council tax benefit	-	-
Incapacity benefit (higher rate short term)	427	102.71
Incapacity benefit (long term)	1,447	108.52
<b>Without children</b>	13,088	44.60
Higher rate Disability living allowance and analogous benefits	5,557	43.36
Lower rate Disability living allowance	3,092	40.95
Severe disablement benefit	1,296	44.58
Disability premium in Income support/Jobseeker's allowance	1,357	50.71
Disability premium in Housing benefit	16	38.66
Disability premium in Council tax benefit	9	66.77
Incapacity benefit (higher rate short term)	358	48.90
Incapacity benefit (long term)	1,403	50.45

**Table 3.1 : Family type by weekly amount of award.***United Kingdom*

	All cases	Weekly amount of award						
		Under £20.00	£20.00 - £39.99	£40.00 - £59.99	£60.00 - £79.99	£80.00 - £99.99	£100.00 - £119.99	£120.00 and over
<b>All cases</b>								
<b>All cases</b>	23,351	1,397	4,496	6,769	2,157	2,502	2,580	3,450
Male	13,547	881	2,636	3,784	1,458	1,596	1,252	1,940
Female	9,804	516	1,860	2,985	699	906	1,328	1,510
<b>Couples</b>								
<b>Couples</b>	8,718	409	735	1,042	1,302	1,817	1,288	2,125
Male	7,203	286	529	821	1,062	1,532	1,108	1,865
Female	1,515	123	206	221	240	285	180	260
<b>Singles</b>								
<b>Singles</b>	14,633	988	3,761	5,727	855	685	1,292	1,325
Male	6,344	595	2,107	2,963	396	64	144	75
Female	8,289	393	1,654	2,764	459	621	1,148	1,250
<b>With children</b>								
<b>All cases</b>	10,263	235	460	753	1,126	1,659	2,580	3,450
Male	5,737	154	300	521	677	893	1,252	1,940
Female	4,526	81	160	232	449	766	1,328	1,510
<b>Couples</b>								
<b>Couples</b>	6,382	213	394	603	785	974	1,288	2,125
Male	5,377	149	288	494	644	829	1,108	1,865
Female	1,005	64	106	109	141	145	180	260
<b>Singles</b>								
<b>Singles</b>	3,881	22	66	150	341	685	1,292	1,325
Male	360	5	12	27	33	64	144	75
Female	3,521	17	54	123	308	621	1,148	1,250
<b>Without children</b>								
<b>All cases</b>	13,088	1,162	4,036	6,016	1,031	843	-	-
Male	7,810	727	2,336	3,263	781	703	-	-
Female	5,278	435	1,700	2,753	250	140	-	-
<b>Couples</b>								
<b>Couples</b>	2,336	196	341	439	517	843	-	-
Male	1,826	137	241	327	418	703	-	-
Female	510	59	100	112	99	140	-	-
<b>Singles</b>								
<b>Singles</b>	10,752	966	3,695	5,577	514	-	-	-
Male	5,984	590	2,095	2,936	363	-	-	-
Female	4,768	376	1,600	2,641	151	-	-	-

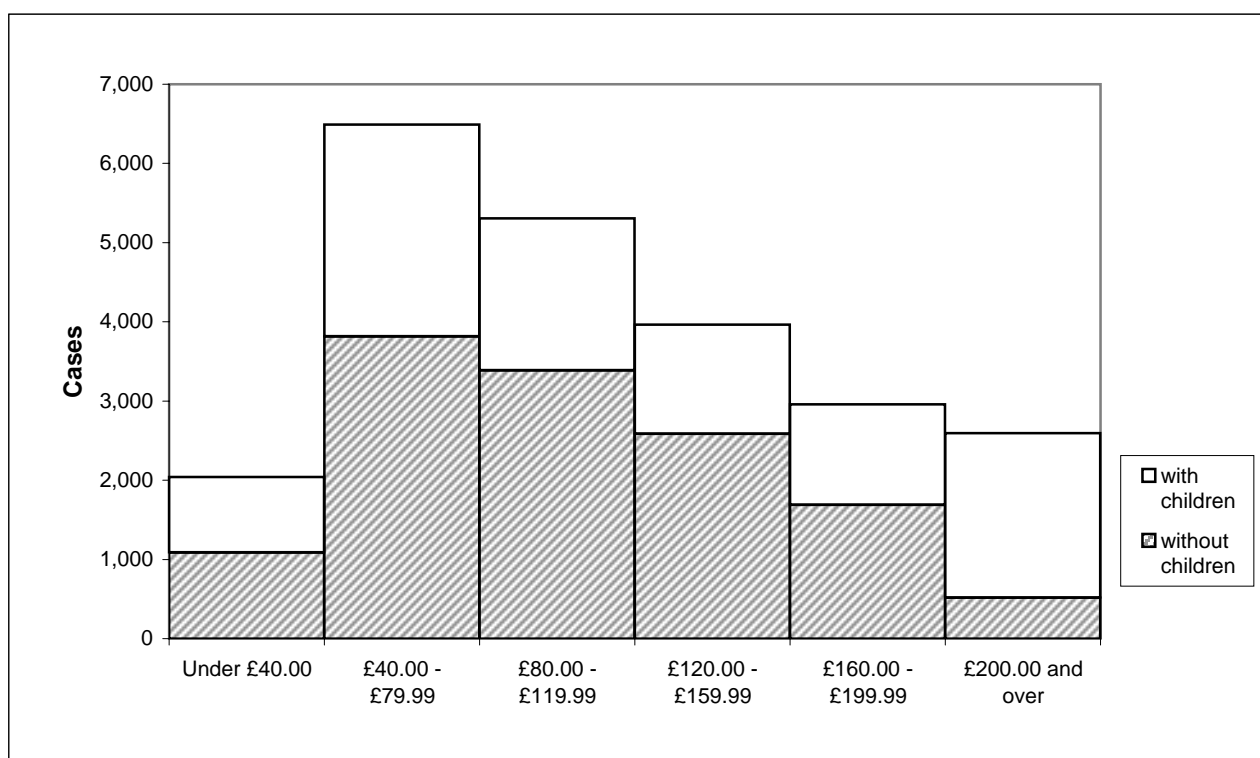
**Table 3.2 : Family size and type by weekly amount of award.***United Kingdom*

	All cases	Weekly amount of award							Average award £ per week
		Under £20.00	£20.00 - £39.99	£40.00 - £59.99	£60.00 - £79.99	£80.00 - £99.99	£100.00 - £119.99	£120.00 and over	
<b>All cases</b>	23,351	1,397	4,496	6,769	2,157	2,502	2,580	3,450	70.14
No children	13,088	1,162	4,036	6,016	1,031	843	-	-	44.60
One child	3,980	111	232	395	595	874	1,570	203	86.31
Two children	3,772	96	174	270	399	566	721	1,546	101.04
Three children	1,701	26	45	70	106	179	226	1,049	121.57
Four or more children	810	-	9	18	26	40	63	652	151.59
<b>Couples</b>	8,718	409	735	1,042	1,302	1,817	1,288	2,125	89.18
No children	2,336	196	341	439	517	843	-	-	61.57
One child	1,854	95	183	280	318	362	573	43	76.87
Two or more children	4,528	118	211	323	467	612	715	2,082	108.47
<b>Singles</b>	14,633	988	3,761	5,727	855	685	1,292	1,325	58.80
No children	10,752	966	3,695	5,577	514	-	-	-	40.91
One child	2,126	16	49	115	277	512	997	160	94.54
Two or more children	1,755	6	17	35	64	173	295	1,165	125.11

**Chart 5 : Number of children by family type.**

**Table 4.1 : Family type by gross weekly earnings of main earner.***United Kingdom*

	All cases	Gross weekly earnings of main earner						Average gross earnings £ per week
		Under £40.00	£40.00 - £79.99	£80.00 - £119.99	£120.00 - £159.99	£160.00 - £199.99	£200.00 and over	
<b>All cases</b>	23,351	2,039	6,489	5,308	3,963	2,959	2,593	114.90
Couples	8,718	1,144	2,244	1,478	1,090	1,105	1,657	122.77
Singles	14,633	895	4,245	3,830	2,873	1,854	936	110.21
<b>With children</b>	10,263	950	2,674	1,920	1,377	1,268	2,074	128.99
Couples	6,382	718	1,562	997	772	841	1,492	132.54
Singles	3,881	232	1,112	923	605	427	582	123.16
<b>Without children</b>	13,088	1,089	3,815	3,388	2,586	1,691	519	103.85
Couples	2,336	426	682	481	318	264	165	96.08
Singles	10,752	663	3,133	2,907	2,268	1,427	354	105.54

**Chart 6 : Gross weekly earnings of main earner and family type**

**Table 4.2 : Other benefits in receipt at the time of application by family type.**

<i>United Kingdom</i>			
	<b>All cases</b>	<b>Couples</b>	<b>Singles</b>
<b>Total</b> (one or more types)	2,542	2,193	349
<b>Pensions:</b>			
Retirement pension	281	158	123
War pensions, War disablement pension and War widows pension	156	129	27
<b>Unemployment related benefits:</b>			
Jobseeker's allowance	34	34	-
<b>Sickness and disability benefits:</b>			
Incapacity benefit, Statutory sick pay and Severe disablement benefit	794	794	-
Industrial injuries disablement benefit and Disability living allowance	491	351	140
<b>Carer benefits:</b>			
Invalid care allowance	883	839	44
<b>Others:</b>	31	10	18

**Table 4.3 : Other income in receipt at the time of application by family type.**

<i>United Kingdom</i>			
	<b>All cases</b>	<b>Couples</b>	<b>Singles</b>
<b>All cases</b>	928	563	365
Benefits in kind	38	20	18
Rent and others	893	546	347
<b>With children</b>	446	} 321	125
Benefits in kind	14		
Rent and others	433		
<b>Without children</b>	482	} 242	240
Benefits in kind	24		
Rent and others	460		

## **Section 5 : Geographical analysis**

This section shows the number of awards in United Kingdom, and their average weekly value, for each Government Office Region.

The number of awards by local authority and parliamentary constituency are also included in this section.

All Geographical classifications, such as Government Office Region, local authority and parliamentary constituency are derived from the postcode recorded for the applicant, using the 2000 Version 1 Postcode Directory supplied by the Office for National Statistics.

Not all recorded postcodes are complete and accurate. Cases are allocated on the basis of incomplete postcodes if the element present is sufficient to identify the area with certainty.

**Table 5.1 : Number of awards by Government Office Region and family type.**

	<b>All cases</b>	<b>Couples</b>	<b>Singles</b>
<b>United Kingdom</b>	23,351	8,718	14,633
<b>Great Britain</b>	21,836	8,127	13,709
North East	1,384	556	828
North West	3,511	1,315	2,196
Yorkshire and The Humber	2,314	963	1,351
East Midlands	1,627	690	937
West Midlands	2,250	847	1,403
East of England	1,380	506	874
London	1,251	352	899
South East	1,987	655	1,332
South West	2,042	789	1,253
Wales	1,966	801	1,165
Scotland	2,123	652	1,471
Northern Ireland	1,515	591	924

**Table 5.2 : Average award by Government Office Region and family type.**

	<b>All cases</b>	<b>Couples</b>	<b>Singles</b>
	<i>£ per week</i>		
<b>United Kingdom</b>	70.14	89.18	58.80
<b>Great Britain</b>	69.57	88.30	58.46
North East	70.57	87.16	59.43
North West	72.92	90.46	62.41
Yorkshire and The Humber	72.03	90.33	58.99
East Midlands	71.83	91.40	57.42
West Midlands	69.07	87.62	57.88
East of England	66.96	87.23	55.23
London	63.77	89.16	53.83
South East	64.47	87.40	53.19
South West	66.56	85.35	54.73
Wales	73.63	89.54	62.70
Scotland	68.46	82.89	62.06
Northern Ireland	78.44	101.21	63.87

**Table 5.3 : Number of awards by local authority.**

<b>Local authority</b>	<b>All cases</b>	<b>Local authority</b>	<b>All cases</b>
<b>UNITED KINGDOM</b>	<b>23,351</b>	<b>Cumbria</b>	214
<b>GREAT BRITAIN</b>	<b>21,836</b>	Allerdale	30
<b>ENGLAND</b>	<b>17,746</b>	Barrow-in-Furness	54
<b>NORTH EAST</b>	<b>1,384</b>	Carlisle	34
<b>Darlington UA</b>	45	Copeland	26
<b>Hartlepool UA</b>	64	Eden	28
<b>Middlesbrough UA</b>	79	South Lakeland	42
<b>Redcar and Cleveland UA</b>	67	<b>Greater Manchester (Met County)</b>	1,351
<b>Stockton-on-Tees UA</b>	85	Bolton	165
<b>Durham</b>	292	Bury	103
Chester-le-Street	19	Manchester	197
Derwentshire	62	Oldham	120
Durham	32	Rochdale	119
Easington	83	Salford	98
Sedgefield	55	Stockport	154
Teesdale	9	Tameside	142
Wear Valley	32	Trafford	79
<b>Northumberland</b>	154	Wigan	174
Alnwick	10	<b>Lancashire</b>	561
Berwick-upon-Tweed	14	Burnley	45
Blyth Valley	58	Chorley	42
Castle Morpeth	10	Fylde	26
Tynedale	25	Hyndburn	54
Wansbeck	37	Lancaster	56
<b>Tyne and Wear (Met County)</b>	598	Pendle	67
Gateshead	124	Preston	66
Newcastle-upon-Tyne	130	Ribble Valley	22
North Tyneside	113	Rossendale	46
South Tyneside	67	South Ribble	36
Sunderland	164	West Lancashire	54
<b>NORTH WEST</b>	<b>3,511</b>	Wyre	47
<b>Blackburn with Darwen UA</b>	97	<b>Merseyside (Met County)</b>	772
<b>Blackpool UA</b>	112	Knowsley	109
<b>Halton UA</b>	71	Liverpool	271
<b>Warrington UA</b>	84	St Helens	67
<b>Cheshire</b>	249	Sefton	137
Chester	57	Wirral	188
Congleton	30	<b>YORKSHIRE AND THE HUMBER</b>	<b>2,314</b>
Crewe and Nantwich	38	<b>East Riding of Yorkshire UA</b>	100
Ellesmere Port and Neston	44	<b>Kingston-upon-Hull, City of UA</b>	127
Macclesfield	39	<b>North East Lincolnshire UA</b>	85
Vale Royal	41	<b>North Lincolnshire UA</b>	60
		<b>York UA</b>	88

**Table 5.3 : Number of awards by local authority. (continued)**

<b>Local authority</b>	<b>All cases</b>	<b>Local authority</b>	<b>All cases</b>
<b>North Yorkshire</b>	216	<b>Lincolnshire</b>	301
Craven	19	Boston	40
Hambleton	32	East Lindsey	90
Harrogate	68	Lincoln	51
Richmondshire	13	North Kesteven	29
Ryedale	12	South Holland	38
Scarborough	49	South Kesteven	32
Selby	23	West Lindsey	21
<b>South Yorkshire (Met County)</b>	681	<b>Northamptonshire</b>	164
Barnsley	126	Corby	21
Doncaster	180	Daventry	16
Rotherham	155	East Northamptonshire	19
Sheffield	220	Kettering	28
		Northampton	52
<b>West Yorkshire (Met County)</b>	957	South Northamptonshire	9
Bradford	228	Wellingborough	19
Calderdale	81		
Kirklees	191	<b>Nottinghamshire</b>	312
Leeds	289	Ashfield	61
Wakefield	168	Bassetlaw	40
		Broxtowe	33
<b>EAST MIDLANDS</b>	<b>1,627</b>	Gedling	46
		Mansfield	67
<b>Derby UA</b>	127	Newark and Sherwood	39
<b>Leicester UA</b>	127	Rushcliffe	26
<b>Nottingham UA</b>	128		
<b>Rutland UA</b>	7	<b>WEST MIDLANDS</b>	<b>2,250</b>
<b>Derbyshire</b>	307	<b>Herefordshire, County of UA</b>	80
Amber Valley	47	<b>Stoke-on-Trent UA</b>	142
Bolsover	43	<b>Telford and Wrekin UA</b>	88
Chesterfield	58		
Derbyshire Dales	23	<b>Shropshire</b>	137
Erewash	38	Bridgnorth	12
High Peak	41	North Shropshire	26
North East Derbyshire	34	Oswestry	24
South Derbyshire	23	Shrewsbury and Atcham	52
		South Shropshire	23
<b>Leicestershire</b>	154	<b>Staffordshire</b>	315
Blaby	26	Cannock Chase	53
Charnwood	40	East Staffordshire	42
Harborough	11	Lichfield	33
Hinckley and Bosworth	23	Newcastle-under-Lyme	46
Melton	10	South Staffordshire	40
North West Leicestershire	23	Stafford	34
Oadby and Wigston	21	Staffordshire Moorlands	33
		Tamworth	34

**Table 5.3 : Number of awards by local authority. (continued)**

<b>Local authority</b>	<b>All cases</b>	<b>Local authority</b>	<b>All cases</b>
<b>Warwickshire</b>	165	<b>Essex</b>	316
North Warwickshire	23	Basildon	44
Nuneaton and Bedworth	46	Braintree	46
Rugby	20	Brentwood	9
Stratford-upon-Avon	30	Castle Point	20
Warwick	46	Chelmsford	29
		Colchester	55
<b>West Midlands (Met County)</b>	1,137	Epping Forest	13
Birmingham	468	Harlow	17
Coventry	142	Maldon	12
Dudley	122	Rochford	11
Sandwell	142	Tendring	53
Solihull	68	Uttlesford	7
Walsall	86		
Wolverhampton	109	<b>Hertfordshire</b>	188
		Broxbourne	11
<b>Worcestershire</b>	186	Dacorum	44
Bromsgrove	26	East Hertfordshire	11
Malvern Hills	29	Hertsmere	10
Redditch	46	North Hertfordshire	18
Worcester	25	St. Albans	26
Wychavon	35	Stevenage	16
Wyre Forest	25	Three Rivers	14
		Watford	16
		Welwyn-Hatfield	22
<b>EAST OF ENGLAND</b>	<b>1,380</b>		
		<b>Norfolk</b>	256
<b>Luton UA</b>	48	Breckland	36
<b>Peterborough UA</b>	74	Broadland	29
<b>Southend-on-Sea UA</b>	34	Great Yarmouth	39
<b>Thurrock UA</b>	30	King's Lynn and West Norfolk	40
		North Norfolk	26
<b>Bedfordshire</b>	84	Norwich	56
Bedford	35	South Norfolk	30
Mid Bedfordshire	21		
South Bedfordshire	28	<b>Suffolk</b>	204
		Babergh	18
<b>Cambridgeshire</b>	146	Forest Heath	10
Cambridge	31	Ipswich	56
East Cambridgeshire	18	Mid Suffolk	19
Fenland	34	St. Edmundsbury	20
Huntingdonshire	29	Suffolk Coastal	32
South Cambridgeshire	34	Waveney	49

**Table 5.3 : Number of awards by local authority. (continued)**

<b>Local authority</b>	<b>All cases</b>	<b>Local authority</b>	<b>All cases</b>
<b>LONDON</b>	<b>1,251</b>	<b>SOUTH EAST</b>	<b>1,987</b>
<b>Inner London</b>	470	<b>Bracknell Forest UA</b>	21
<b>Inner London - West</b>	137	<b>Brighton and Hove UA</b>	104
Camden	43	<b>Isle of Wight UA</b>	49
Hammersmith and Fulham	16	<b>Medway UA</b>	75
Kensington and Chelsea	24	<b>Milton Keynes UA</b>	68
Wandsworth	34	<b>Portsmouth UA</b>	50
Westminster and City of London	20	<b>Reading UA</b>	30
<b>Inner London - East</b>	333	<b>Slough UA</b>	14
Hackney	49	<b>Southampton UA</b>	73
Haringey	32	<b>West Berkshire UA</b>	23
Islington	32	<b>Windsor and Maidenhead UA</b>	18
Lambeth	40	<b>Wokingham UA</b>	18
Lewisham	51	<b>Buckinghamshire</b>	81
Newham	60	Aylesbury Vale	29
Southwark	39	Chiltern	11
Tower Hamlets	30	South Bucks	9
		Wycombe	32
<b>Outer London</b>	781	<b>East Sussex</b>	131
<b>Outer London - East and North East</b>	309	Eastbourne	31
Barking and Dagenham	45	Hastings	38
Bexley	47	Lewes	19
Enfield	39	Rother	25
Greenwich	40	Wealden	18
Havering	55	<b>Hampshire</b>	316
Redbridge	35	Basingstoke and Deane	35
Waltham Forest	48	East Hampshire	25
<b>Outer London - South</b>	198	Eastleigh	30
Bromley	43	Fareham	24
Croydon	75	Gosport	28
Kingston-upon-Thames	16	Hart	21
Merton	23	Havant	39
Sutton	41	New Forest	43
<b>Outer London - West and North West</b>	274	Rushmoor	19
Barnet	52	Test Valley	36
Brent	40	Winchester	16
Ealing	28	<b>Kent</b>	366
Harrow	34	Ashford	36
Hillingdon	38	Canterbury	27
Hounslow	58	Dartford	20
Richmond-upon-Thames	24	Dover	31
		Gravesham	24
		Maidstone	32
		Sevenoaks	23
		Shepway	37
		Swale	34
		Thanet	65
		Tonbridge and Malling	18
		Tunbridge Wells	19

**Table 5.3 : Number of awards by local authority. (continued)**

<b>Local authority</b>	<b>All cases</b>	<b>Local authority</b>	<b>All cases</b>
<b>Oxfordshire</b>	170	<b>Devon</b>	293
Cherwell	48	East Devon	45
Oxford	26	Exeter	47
South Oxfordshire	31	Mid Devon	22
Vale of White Horse	32	North Devon	41
West Oxfordshire	33	South Hams	29
		Teignbridge	56
<b>Surrey</b>	184	Torridge	36
Elmbridge	15	West Devon	17
Epsom and Ewell	12		
Guildford	15	<b>Dorset</b>	167
Mole Valley	33	Christchurch	17
Reigate and Banstead	31	East Dorset	28
Runnymede	13	North Dorset	29
Spelthorne	11	Purbeck	18
Surrey Heath	15	West Dorset	42
Tandridge	13	Weymouth and Portland	33
Waverley	15		
Woking	11	<b>Gloucestershire</b>	168
		Cheltenham	27
<b>West Sussex</b>	196	Cotswold	15
Adur	19	Forest of Dean	27
Arun	40	Gloucester	40
Chichester	27	Stroud	36
Crawley	33	Tewkesbury	23
Horsham	23		
Mid Sussex	28	<b>Somerset</b>	182
Worthing	26	Mendip	37
		Sedgemoor	36
<b>SOUTH WEST</b>	<b>2,042</b>	South Somerset	51
		Taunton Deane	41
<b>Bath and North East Somerset UA</b>	57	West Somerset	17
<b>Bournemouth UA</b>	108		
<b>Bristol, City of UA</b>	136	<b>Wiltshire</b>	104
<b>North Somerset UA</b>	61	Kennet	14
<b>Plymouth UA</b>	167	North Wiltshire	26
<b>Poole UA</b>	47	Salisbury	32
<b>South Gloucestershire UA</b>	69	South Wiltshire	32
<b>Swindon UA</b>	63		
<b>Torbay UA</b>	111		
<b>Cornwall, and the Isles of Scilly</b>	309		
Caradon	49		
Carrick	42		
Kerrier	59		
North Cornwall	52		
Penwith and Isles of Scilly	48		
Restormel	59		

**Table 5.3 : Number of awards by local authority. (continued)**

<b>Local authority</b>	<b>All cases</b>	<b>Local authority</b>	<b>All cases</b>
<b>WALES</b>	<b>1,966</b>	Moray	22
Blaenau Gwent	75	North Ayrshire	71
Bridgend	91	North Lanarkshire	204
Caerphilly	154	Orkney Islands	13
Cardiff	151	Perth and Kinross	55
Carmarthenshire	106	Renfrewshire	95
Ceredigion	57	Scottish Borders, The	57
Conwy	56	Shetland Islands	7
Denbighshire	59	South Ayrshire	41
Flintshire	68	South Lanarkshire	128
Gwynedd	63	Stirling	31
Isle of Anglesey	59	West Dunbartonshire	38
Merthyr Tydfil	63	West Lothian	86
Monmouthshire	39		
Neath Port Talbot	121	<b>GREAT BRITAIN - Country unknown</b>	1
Newport	59		
Pembrokeshire	123		
Powys	87	<b>NORTHERN IRELAND</b>	<b>1,515</b>
Rhondda, Cynon, Taff	172	Antrim	36
Swansea	148	Ards	43
Torfaen	53	Armagh	44
Vale of Glamorgan, The	61	Ballymena	31
Wrexham	101	Ballymoney	18
		Banbridge	36
<b>SCOTLAND</b>	<b>2,123</b>	Belfast	308
Aberdeen City	58	Carrickfergus	25
Aberdeenshire	56	Castlereagh	49
Angus	37	Coleraine	28
Argyll and Bute	23	Cookstown	41
Clackmannanshire	16	Craigavon	101
Dumfries and Galloway	58	Derry	94
Dundee City	69	Down	61
East Ayrshire	50	Dungannon	51
East Dunbartonshire	36	Fermanagh	43
East Lothian	40	Larne	18
East Renfrewshire	28	Limavady	26
Edinburgh, City of	167	Lisburn	110
Eilean Siar (Western Isles)	14	Magherafelt	31
Falkirk	53	Moyle	11
Fife	148	Newry and Mourne	74
Glasgow City	252	Newtonabbey	64
Highland	100	North Down	51
Inverclyde	35	Omagh	52
Midlothian	35	Strabane	52
		Unknown	17

**Table 5.4 : Number of awards by parliamentary constituency.**

<b>Parliamentary constituency</b>	<b>All cases</b>	<b>Parliamentary constituency</b>	<b>All cases</b>
<b>UNITED KINGDOM</b>	<b>23,351</b>	Bolton South East	52
		Bolton West	46
<b>GREAT BRITAIN</b>	<b>21,836</b>	Bootle	60
		Boston and Skegness	68
<b>ENGLAND</b>	<b>17,746</b>	Bosworth	23
		Bournemouth East	58
Aldershot	39	Bournemouth West	50
Aldridge - Brownhills	26	Bracknell	22
Altrincham and Sale West	20	Bradford North	51
Amber Valley	39	Bradford South	49
Arundel and South Downs	20	Bradford West	49
Ashfield	52	Braintree	36
Ashford	36	Brent East	13
Ashton under Lyne	63	Brent North	10
Aylesbury	19	Brent South	17
Banbury	38	Brentford and Isleworth	26
Barking	20	Brentwood and Ongar	12
Barnsley Central	49	Bridgwater	41
Barnsley East and Mexborough	57	Brigg and Goole	35
Barnsley West and Penistone	36	Brighton, Kemptown	47
Barrow and Furness	63	Brighton, Pavilion	34
Basildon	32	Bristol East	34
Basingstoke	27	Bristol North West	48
Bassetlaw	43	Bristol South	41
Bath	31	Bristol West	19
Batley and Spen	40	Bromley and Chislehurst	14
Battersea	7	Bromsgrove	26
Beaconsfield	16	Broxbourne	11
Beckenham	13	Broxtowe	28
Bedford	23	Buckingham	14
Berwick-upon-Tweed	27	Burnley	45
Bethnal Green and Bow	18	Burton	40
Beverley and Holderness	35	Bury North	49
Bexhill and Battle	24	Bury South	54
Bexleyheath and Crayford	25	Bury St. Edmunds	24
Billericay	19	Calder Valley	43
Birkenhead	61	Camberwell and Peckham	16
Birmingham, Edgbaston	24	Cambridge	28
Birmingham, Erdington	70	Cannock Chase	54
Birmingham, Hall Green	31	Canterbury	22
Birmingham, Hodge Hill	50	Carlisle	27
Birmingham, Ladywood	43	Carshalton and Wallington	28
Birmingham, Northfield	38	Castle Point	20
Birmingham, Perry Barr	41	Central Suffolk and North Ipswich	19
Birmingham, Selly Oak	41	Charnwood	21
Birmingham, Sparkbrook and Small Heath	56	Chatham and Aylesford	30
Birmingham, Yardley	38	Cheadle	45
Bishop Auckland	42	Cheltenham	23
Blaby	17	Chesham and Amersham	10
Blackburn	72	Chesterfield	56
Blackpool North and Fleetwood	63	Chester, City of	40
Blackpool South	73	Chichester	24
Blaydon	45	Chingford and Woodford Green	16
Blyth Valley	58	Chipping Barnet	16
Bognor Regis and Littlehampton	30	Chorley	42
Bolsover	44	Christchurch	38
Bolton North East	66	Cities of London and Westminster	6

**Table 5.4 : Number of awards by parliamentary constituency. (continued)**

<b>Parliamentary constituency</b>	<b>All cases</b>	<b>Parliamentary constituency</b>	<b>All cases</b>
Cleethorpes	43	Esher and Walton	15
Colchester	39	Exeter	47
Colne Valley	46	Falmouth and Camborne	62
Congleton	30	Fareham	23
Copeland	26	Faversham and Mid Kent	15
Corby	30	Feltham and Heston	32
Cotswold	15	Finchley and Golders Green	17
Coventry North East	57	Folkestone and Hythe	37
Coventry North West	54	Forest of Dean	30
Coventry South	31	Fylde	39
Crawley	33	Gainsborough	21
Crewe and Nantwich	37	Gateshead East and Washington West	46
Crosby	20	Gedling	39
Croydon Central	23	Gillingham	23
Croydon North	25	Gloucester	40
Croydon South	27	Gosport	28
Dagenham	25	Grantham and Stamford	30
Darlington	41	Gravesham	24
Dartford	22	Great Grimsby	47
Daventry	21	Great Yarmouth	39
Denton and Reddish	65	Greenwich and Woolwich	17
Derby North	54	Guildford	15
Derby South	56	Hackney North and Stoke Newington	17
Devizes	26	Hackney South and Shoreditch	32
Dewsbury	38	Halesowen and Rowley Regis	35
Don Valley	43	Halifax	38
Doncaster Central	60	Haltemprice and Howden	18
Doncaster North	60	Halton	46
Dover	29	Hammersmith and Fulham	10
Dudley North	35	Hampstead and Highgate	12
Dudley South	40	Harborough	27
Dulwich and West Norwood	18	Harlow	18
Durham,. City of	32	Harrogate and Knaresborough	44
Ealing North	10	Harrow East	18
Ealing Southall	13	Harrow West	16
Ealing, Acton and Shepherd's Bush	11	Hartlepool	64
Easington	73	Harwich	45
East Devon	31	Hastings and Rye	39
East Ham	27	Havant	35
East Hampshire	23	Hayes and Harlington	18
East Surrey	20	Hazel Grove	37
East Worthing and Shoreham	27	Hemel Hempstead	36
East Yorkshire	30	Hemsworth	58
Eastbourne	31	Hendon	19
Eastleigh	28	Henley	14
Eccles	20	Hereford	53
Eddisbury	40	Hertford and Stortford	9
Edmonton	19	Hertsmere	10
Ellesmere Port and Neston	44	Hexham	26
Elmet	28	Heywood and Middleton	44
Eltham	13	High Peak	44
Enfield North	11	Hitchin and Harpenden	10
Enfield, Southgate	8	Holborn and St Pancras	31
Epping Forest	9	Hornchurch	23
Epsom and Ewell	20	Hornsey and Wood Green	15
Erewash	36	Horsham	17
Erith and Thamesmead	16	Houghton and Washington East	40

**Table 5.4 : Number of awards by parliamentary constituency. (continued)**

<b>Parliamentary constituency</b>	<b>All cases</b>	<b>Parliamentary constituency</b>	<b>All cases</b>
Hove	31	Manchester, Withington	29
Huddersfield	55	Mansfield	58
Huntingdon	17	Medway	26
Hyndburn	60	Meriden	39
Ilford North	17	Mid Bedfordshire	16
Ilford South	14	Mid Dorset and North Poole	28
Ipswich	48	Mid Norfolk	21
Isle of Wight	49	Mid Sussex	23
Islington North	17	Mid Worcestershire	32
Islington South and Finsbury	15	Middlesbrough	54
Jarrow	43	Middlesbrough South and East Cleveland	45
Keighley	43	Milton Keynes North East	32
Kensington and Chelsea	7	Milton Keynes South West	36
Kettering	29	Mitcham and Morden	16
Kingston and Surbiton	14	Mole Valley	30
Kingston upon Hull East	53	Morecambe and Lunesdale	37
Kingston upon Hull North	40	Morley and Rothwell	45
Kingston upon Hull West and Hessle	39	New Forest East	23
Kingswood	41	New Forest West	20
Knowsley North and Sefton East	70	Newark	23
Knowsley South	65	Newbury	16
Lancaster and Wyre	40	Newcastle upon Tyne Central	39
Leeds Central	47	Newcastle upon Tyne East and Wallsend	46
Leeds East	38	Newcastle upon Tyne North	49
Leeds North East	39	Newcastle-under-Lyme	37
Leeds North West	19	Normanton	35
Leeds West	38	North Cornwall	74
Leicester East	31	North Devon	43
Leicester South	53	North Dorset	35
Leicester West	43	North Durham	49
Leigh	64	North East Bedfordshire	20
Leominster	29	North East Cambridgeshire	40
Lewes	14	North East Derbyshire	35
Lewisham East	24	North East Hampshire	7
Lewisham West	12	North East Hertfordshire	14
Lewisham, Deptford	15	North Essex	24
Leyton and Wanstead	16	North Norfolk	26
Lichfield	32	North Shropshire	50
Lincoln	53	North Southwark and Bermondsey	15
Liverpool, Garston	54	North Swindon	28
Liverpool, Riverside	42	North Thanet	45
Liverpool, Walton	61	North Tyneside	62
Liverpool, Wavertree	55	North Warwickshire	36
Liverpool, West Derby	59	North West Cambridgeshire	30
Loughborough	28	North West Durham	50
Louth and Horncastle	61	North West Hampshire	29
Ludlow	29	North West Leicestershire	23
Luton North	28	North West Norfolk	35
Luton South	21	North Wiltshire	21
Macclesfield	26	Northampton North	33
Maidenhead	18	Northampton South	20
Maidstone and The Weald	23	Northavon	20
Makerfield	53	Norwich North	39
Maldon and East Chelmsford	17	Norwich South	36
Manchester, Blackley	38	Nottingham East	45
Manchester, Central	49	Nottingham North	48
Manchester, Gorton	38	Nottingham South	34

**Table 5.4 : Number of awards by parliamentary constituency. (continued)**

<b>Parliamentary constituency</b>	<b>All cases</b>	<b>Parliamentary constituency</b>	<b>All cases</b>
Nuneaton	36	Sherwood	43
Old Bexley and Sidcup	14	Shipley	35
Oldham East and Saddleworth	50	Shrewsbury and Atcham	52
Oldham West and Royton	58	Sittingbourne and Sheppey	30
Orpington	16	Skipton and Ripon	35
Oxford East	23	Sleaford and North Hykeham	28
Oxford West and Abingdon	30	Slough	13
Pendle	67	Solihull	28
Penrith and The Border	37	Somerton and Frome	36
Peterborough	52	South Cambridgeshire	30
Plymouth, Devonport	89	South Derbyshire	40
Plymouth, Sutton	53	South Dorset	42
Pontefract and Castleford	50	South East Cambridgeshire	23
Poole	31	South East Cornwall	57
Poplar and Canning Town	23	South Holland and The Deepings	39
Portsmouth North	32	South Norfolk	27
Portsmouth South	18	South Ribble	36
Preston	55	South Shields	31
Pudsey	36	South Staffordshire	34
Putney	14	South Suffolk	18
Rayleigh	10	South Swindon	35
Reading East	17	South Thanet	27
Reading West	19	South West Bedfordshire	24
Redcar	46	South West Devon	31
Redditch	47	South West Hertfordshire	16
Regent's Park and Kensington North	31	South West Norfolk	33
Reigate	19	South West Surrey	13
Ribble Valley	31	Southampton, Itchen	36
Richmond (Yorks)	29	Southampton, Test	31
Richmond Park	11	Southend West	13
Rochdale	70	Southport	31
Rochford and Southend East	24	Spelthorne	12
Romford	17	St Albans	20
Romsey	23	St Helens North	30
Rossendale and Darwen	65	St Helens South	37
Rother Valley	52	St Ives	61
Rotherham	47	Stafford	28
Rugby and Kenilworth	21	Staffordshire Moorlands	26
Ruislip - Northwood	11	Stalybridge and Hyde	52
Runnymede and Weybridge	13	Stevenage	18
Rushcliffe	26	Stockport	51
Rutland and Melton	22	Stockton North	44
Ryedale	34	Stockton South	41
Saffron Walden	17	Stoke-on-Trent Central	47
Salford	40	Stoke-on-Trent North	40
Salisbury	29	Stoke-on-Trent South	57
Scarborough and Whitby	40	Stone	25
Scunthorpe	32	Stourbridge	32
Sedgefield	50	Stratford-on-Avon	29
Selby	29	Streatham	11
Sevenoaks	17	Stretford and Urmston	56
Sheffield Central	36	Stroud	36
Sheffield, Attercliffe	42	Suffolk Coastal	30
Sheffield, Brightside	49	Sunderland North	53
Sheffield, Hallam	14	Sunderland South	60
Sheffield, Heeley	36	Surrey Heath	17
Sheffield, Hillsborough	43	Sutton and Cheam	13

**Table 5.4 : Number of awards by parliamentary constituency. (continued)**

<b>Parliamentary constituency</b>	<b>All cases</b>	<b>Parliamentary constituency</b>	<b>All cases</b>
Sutton Coldfield	36	Wimbledon	7
Tamworth	37	Winchester	16
Tatton	19	Windsor	5
Taunton	42	Wirral South	28
Teignbridge	51	Wirral West	32
Telford	50	Witney	34
Tewkesbury	24	Woking	11
Thurrock	23	Wokingham	13
Tiverton and Honiton	34	Wolverhampton North East	46
Tonbridge and Malling	16	Wolverhampton South East	34
Tooting	13	Wolverhampton South West	29
Torbay	83	Woodspring	22
Torridge and West Devon	53	Worcester	25
Totnes	56	Workington	27
Tottenham	17	Worsley	58
Truro and St. Austell	55	Worthing West	22
Tunbridge Wells	17	Wrekin, The	43
Twickenham	15	Wycombe	22
Tyne Bridge	48	Wyre Forest	24
Tynemouth	36	Wythenshawe and Sale East	45
Upminster	15	Yeovil	37
Uxbridge	9	York, City of	53
Vale of York	39	Unknown	32
Vauxhall	18		
Wakefield	37		
Wallasey	64	<b>WALES</b>	<b>1,966</b>
Walsall North	38	Aberavon	68
Walsall South	22	Alyn and Deeside	36
Walthamstow	20	Blaenau Gwent	75
Wansbeck	42	Brecon and Radnorshire	42
Wansdyke	27	Bridgend	58
Wantage	30	Caernarfon	37
Warley	40	Caerphilly	87
Warrington North	46	Cardiff Central	39
Warrington South	38	Cardiff North	26
Warwick and Leamington	43	Cardiff South and Penarth	52
Watford	21	Cardiff West	43
Waveney	44	Carmarthen East and Dinefwr	40
Wealden	14	Carmarthen West and South Pembrokeshire	66
Weaver Vale	38	Ceredigion	57
Wellingborough	29	Clwyd South	53
Wells	25	Clwyd West	31
Welwyn Hatfield	21	Conwy	37
Wentworth	56	Cynon Valley	65
West Bromwich East	38	Delyn	32
West Bromwich West	44	Gower	37
West Chelmsford	22	Islwyn	57
West Derbyshire	30	Llanelli	49
West Dorset	40	Meirionnydd Nant Conwy	18
West Ham	22	Merthyr Tydfil and Rhymney	73
West Lancashire	45	Monmouth	37
West Suffolk	20	Montgomeryshire	45
West Worcestershire	29	Neath	53
Westbury	28	Newport East	30
Westmorland and Lonsdale	33	Newport West	34
Weston-super-Mare	39	Ogmore	46
Wigan	36		

**Table 5.4 : Number of awards by parliamentary constituency. (continued)**

<b>Parliamentary constituency</b>	<b>All cases</b>	<b>Parliamentary constituency</b>	<b>All cases</b>
Pontypridd	42	Glasgow, Rutherglen	26
Preseli Pembrokehire	74	Glasgow, Shettleston	26
Rhondda	57	Glasgow, Springburn	33
Swansea East	66	Gordon	18
Swansea West	45	Greenock and Inverclyde	16
Torfaen	49	Hamilton North and Bellshill	34
Vale of Clwyd	53	Hamilton South	37
Vale of Glamorgan	46	Inverness East, Nairn and Lochaber	34
Wrexham	50	Kilmarnock and Loudoun	27
Ynys Mon	59	Kirkcaldy	24
Unknown	2	Linlithgow	38
		Livingston	48
		Midlothian	29
<b>SCOTLAND</b>	<b>2,123</b>	Moray	20
		Motherwell and Wishaw	50
Aberdeen Central	20	North East Fife	18
Aberdeen North	26	North Tayside	22
Aberdeen South	12	Ochil	23
Airdrie and Shotts	46	Orkney and Shetland	20
Angus	29	Paisley North	45
Argyll and Bute	19	Paisley South	26
Ayr	26	Perth	39
Banff and Buchan	28	Ross, Skye and Inverness West	40
Caithness, Sutherland and Easter Ross	26	Roxburgh and Berwickshire	34
Carrick, Cumnock and Doon Valley	37	Stirling	26
Central Fife	51	Strathkelvin and Bearsden	30
Clydebank and Milngavie	24	Tweeddale, Ettrick and Lauderdale	29
Clydesdale	31	West Aberdeenshire and Kincardine	12
Coatbridge and Chryston	55	West Renfrewshire	43
Cumbernauld and Kilsyth	27	Western Isles	14
Cunninghame North	38	Unknown	1
Cunninghame South	33		
Dumbarton	23		
Dumfries	31	<b>GREAT BRITAIN - Country unknown</b>	<b>1</b>
Dundee East	23		
Dundee West	46		
Dunfermline East	31	<b>NORTHERN IRELAND</b>	<b>1,515</b>
Dunfermline West	24		
East Kilbride	31	Belfast East	58
East Lothian	38	Belfast North	105
Eastwood	28	Belfast South	69
Edinburgh Central	25	Belfast West	153
Edinburgh East and Musselburgh	32	East Antrim	57
Edinburgh North and Leith	25	East Londonderry	54
Edinburgh South	23	Fermanagh and South Tyrone	73
Edinburgh West	26	Foyle	91
Edinburgh, Pentlands	38	Lagan Valley	80
Falkirk East	21	Mid Ulster	88
Falkirk West	32	Newry and Armagh	81
Galloway and Upper Nithsdale	27	North Antrim	59
Glasgow, Anniesland	23	North Down	53
Glasgow, Baillieston	31	South Antrim	69
Glasgow, Cathcart	26	South Down	97
Glasgow, Govan	20	Strangford	59
Glasgow, Kelvin	11	Upper Bann	124
Glasgow, Maryhill	44	West Tyrone	102
Glasgow, Pollok	34	Unknown	43

**Table 6.1 : Type and main qualifying benefit of all awards starting between October 1999 and April 2000.**

		<i>United Kingdom</i>
	<b>All cases</b>	<b>Average award £ per week</b>
<b>All awards</b>		
<b>All qualifying benefits</b>	28,017	69.72
Disability living allowance - higher rate & analogous benefits	12,231	67.03
Disability living allowance - lower rate	5,879	60.98
Severe disablement benefit	1,967	58.73
Disability premium in IS/JSA/HB/CTB	3,619	87.38
Incapacity benefit (higher rate short term)	903	78.37
Incapacity benefit (long term)	3,418	79.77
<b>New awards <sup>1</sup></b>		
<b>All qualifying benefits</b>	8,489	67.84
Disability living allowance - higher rate & analogous benefits	3,396	61.26
Disability living allowance - lower rate	1,695	61.45
Severe disablement benefit	575	61.58
Disability premium in IS/JSA/HB/CTB	1,239	87.27
Incapacity benefit (higher rate short term)	383	76.99
Incapacity benefit (long term)	1,201	75.49
<b>Renewal awards <sup>2</sup></b>		
<b>All qualifying benefits</b>	17,600	71.39
Disability living allowance - higher rate & analogous benefits	7,826	70.05
Disability living allowance - lower rate	3,709	61.57
Severe disablement benefit	1,296	57.82
Disability premium in IS/JSA/HB/CTB	2,218	88.06
Incapacity benefit (higher rate short term)	486	80.37
Incapacity benefit (long term)	2,065	82.60
<b>Repeat awards <sup>3</sup></b>		
<b>All qualifying benefits</b>	1,928	62.83
Disability living allowance - higher rate & analogous benefits	1,009	63.00
Disability living allowance - lower rate	475	54.65
Severe disablement benefit	96	54.10
Disability premium in IS/JSA/HB/CTB	162	78.85
Incapacity benefit (higher rate short term)	34	65.43
Incapacity benefit (long term)	152	75.11

## Notes :

1. New awards are made to people who have never received DWA or DPTC before.
2. Renewal awards are those following on immediately from a previous award without a break.
3. Repeat awards are those where there has been a previous award but there has been a break between claims.
4. Figures for DWA awards in Great Britain starting between November 1992 and August 1999 appear in the enquiry statistics for October 1999.

(NB if the previous award ended more than 2 years earlier then the claim will be treated as 'NEW'.)

**Table 6.2 : Awards starting between October 1999 and April 2000 by type of award and family type.**

	<i>United Kingdom</i>				
	<b>All Cases</b>	<b>Couples</b>		<b>Singles</b>	
		<b>Male</b>	<b>Female</b>	<b>Male</b>	<b>Female</b>
<b>All awards</b>	28,017	8,672	1,843	7,622	9,880
<b>New awards</b> <sup>1</sup>	8,489	2,604	699	2,079	3,107
<b>Renewal awards</b> <sup>2</sup>	17,600	5,562	998	4,955	6,085
<b>Repeat awards</b> <sup>3</sup>	1,928	506	146	588	688

## Notes :

1. New awards are made to people who have never received DWA or DPTC before.
2. Renewal awards are those following on immediately from a previous award without a break.
3. Repeat awards are those where there has been a previous award but there has been a break between claims.
4. Figures for DWA awards in Great Britain starting between November 1992 and August 1999 appear in the enquiry statistics for October 1999.

(NB if the previous award ended more than 2 years earlier then the claim will be treated as 'NEW'.)

**Table 6.3 : Disallowances between October 1999 and April 2000 by reason of disallowance.***United Kingdom*

	<b>Number of disallowances</b>
<b>All disallowances</b>	5,671
<b>All A codes</b>	55
A1 Claimant was not in UK	54
A2 Claimant was not normally living in UK	-
A3 Partner not normally living in UK	-
A4 All claimants earnings from outside UK	-
<b>All C codes</b>	50
C1 Claimant's capital exceeds £16,000	38
C2 Claimant and partner's capital exceeds £16,000	9
C3 Failure to provide information about value of claimant and partner's capital	-
C4 Failure to provide information about value of claimant's capital	-
<b>All D codes</b>	1,106
D1 Claimant not doing paid work for an average of 16 hours a week or more	414
D2 Claimant not in paid work	354
D5 Claimant not engaged in remunerative work in relevant weeks	239
D7 Claimant not normally engaged in paid work	90
D9 Claimant not treated as in paid work - voluntary	-
D11 Claimant not treated as in paid work - charity	-
D13 Claimant working for voluntary body - expenses	-
D15 Claimant could not be treated as in paid work on the information available	8
<b>All E codes</b>	1,135
E1 Claimant's income higher than the level at which DPTC would become payable	986
E2 Claimant's entitlement less than the minimum amount of DPTC	27
E3 On the information available the claimant or partner's income was higher then the level at which DPTC would become payable	122
<b>All other codes</b>	
G1 Any disallowance not covered by other categories	115
I DPTC claim made more than 6 weeks before DPTC end date	908
J1 Qualifying benefit test not satisfied	1,651
K1 Disability test not satisfied	286
L Lapsed claim	13
W Claimant has withdrawn claim	352

## Notes :

1. Figures for DWA disallowances in Great Britain occurring between November 1992 and August 1999 appear in the enquiry statistics for October 1999.

**Table 6.4 : Renewal and repeat awards starting between October 1999 and April 2000 by disability type and age of claimant.**

*United Kingdom*

	All ages	Under 30	30 - 39	40 - 49	50 - 59	60 and over
<b>Renewal awards <sup>1</sup></b>						
Mental disabilities - treatment	1,220	144	450	423	186	17
Mental disabilities - day to day things	1,688	549	552	398	170	19
Mental disabilities - getting on with people	1,368	314	527	344	170	13
Fits and comas	116	27	43	31	13	-
Exhaustion and pain	4,945	488	1,517	1,652	1,101	187
Seeing	512	122	177	131	69	13
Hearing	273	56	96	71	43	7
Communicating	527	157	170	128	62	10
Getting around	743	71	215	242	179	36
Using your hands	748	161	253	190	129	15
Reaching with your arms	102	11	36	27	26	-
<b>Repeat awards <sup>2</sup></b>						
Mental disabilities - treatment	136	25	51	44	15	-
Mental disabilities - day to day things	149	53	48	32	15	-
Mental disabilities - getting on with people	151	34	59	39	18	-
Fits and comas	15	9	-	-	-	-
Exhaustion and pain	430	72	138	141	73	6
Seeing	71	22	23	18	6	-
Hearing	39	10	15	6	6	-
Communicating	59	25	18	6	8	-
Getting around	67	14	17	15	20	-
Using your hands	112	37	39	23	13	-
Reaching with your arms	23	9	5	5	-	-

## Notes :

1. Renewal awards are those following on immediately from a previous award without a break.
2. Repeat awards are those where there has been a previous award but there has been a break
3. Claimants may have one or more type(s) of disability. This table records all declared and confirmed disability types for those claimants who complete form DPTC2 prior to renewal/ repeat awards.
4. Figures for DWA awards in Great Britain starting between November 1992 and August 1999 appear in the enquiry statistics for October 1999.

**£5.00**