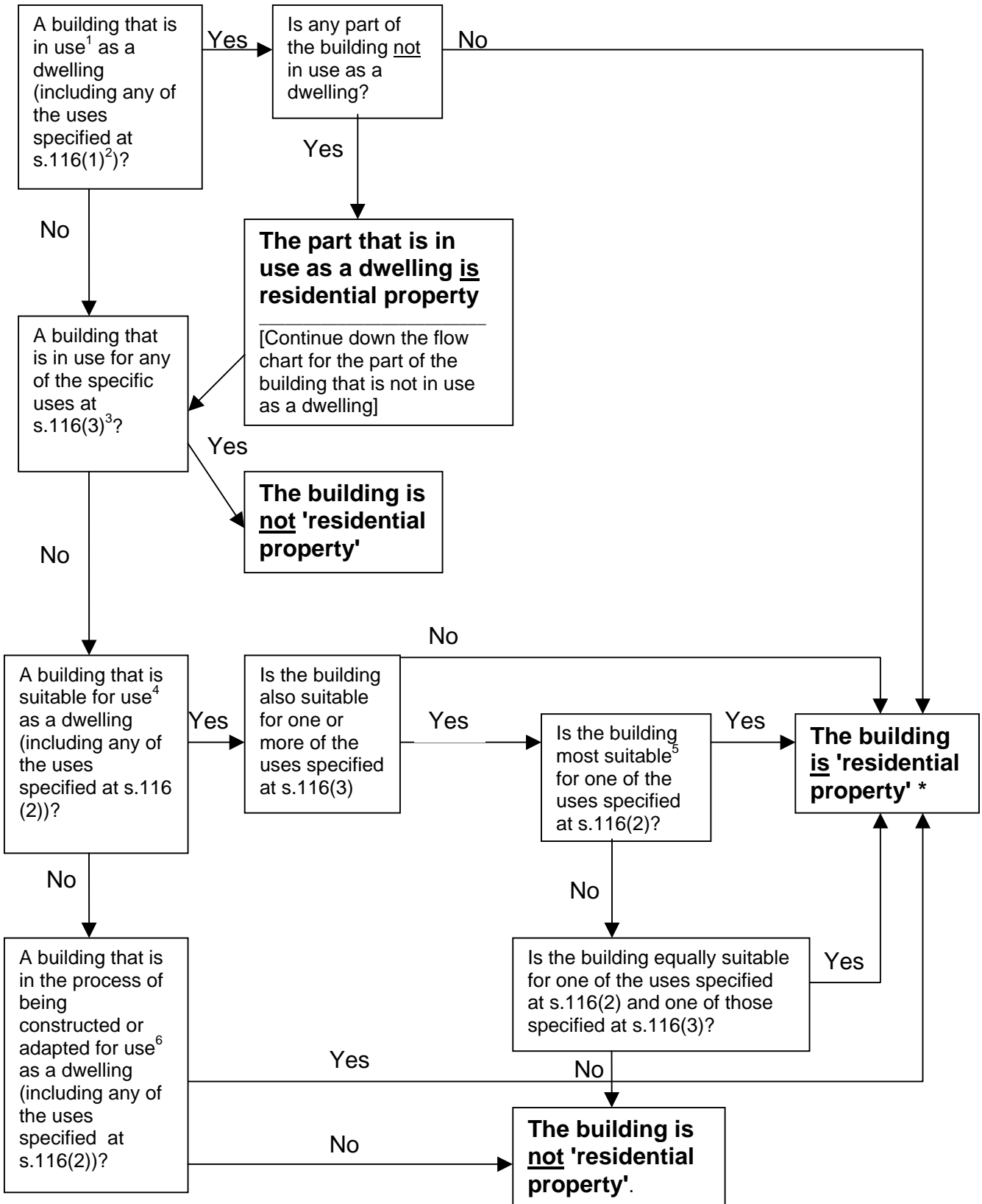


**FLOW CHART TO DETERMINE WHETHER PROPERTY IS OR IS NOT
'RESIDENTIAL PROPERTY'**

Is the subject of the conveyance/transfer/lease...

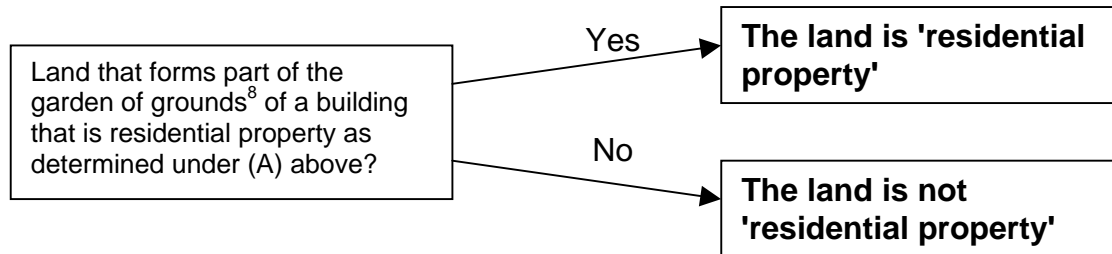
(A)



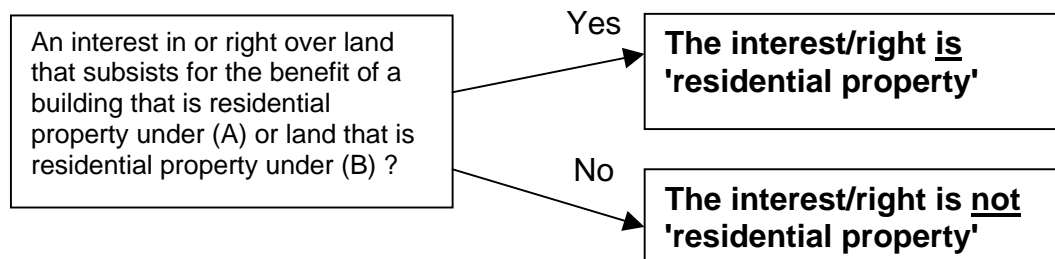
*unless the conveyance, transfer or lease comprises or includes six or more separate dwellings⁷ made pursuant to a single transaction, in which circumstances none of the land will be 'residential property'

Is the subject of the conveyance/transfer/lease...

(B)



(C)



Footnotes

1. See paragraph [11] to [14] of SP
2. See paragraph [22] of SP
3. See paragraph [23] of SP
4. See paragraph [15] to [18] of SP
5. See paragraph [29] of SP
6. See paragraph [33] to [34] of SP
7. See paragraph [40] to [44] of SP
8. See paragraph [35] of SP